

8K Wi-Fi 6E Amlogic S928X-J OTT TV Box

Specifications

Model No.	Amlogic S928X-J Android TV Box
CPU	Amlogic S928X-J ARM Cortex-A76+Quad-Core ARM Cortex-A55
GPU	ARM Mali-G57 MC2, 4K GUI OpenGL ES 3.2, Vulkan 1.2 and OpenCL 2.0
NPU	3.2 TOPS
RAM	64-bit DDR4, LPDDR4/4X UP to 8GB DDR4266
eMMC	eMMC 5.1, SLC NAND Flash
Decoding resolution	Amlogic Video Engine (AVE) with dedicated hardware decoders and encoders Decoding AV1 MP-10 @ L6.1 up to 8Kp60 VP9 Profile-2 @ 6.1 up to 8Kp60 H.265 HEVC MP-10 @ L6.1 up to 8Kp60 AVS3 Phase 1 up to 8Kp60 AVS2-P2 Profile up to 8Kp60 H.264 AVC HP @ L5.2 up to 4Kp60 MPEG-4, WMV/VC-1, AVS, MPEG-2, MPEG-1 up to 1080p60 MJPEG and JPEG unlimited pixel resolution decoding (ISO/IEC-10918) Support multi-video decoder up to 4x 4Kp60 Encoding JPEG image encoding up to 4Kp60 H.265 video encoding up to 4Kp60 with low latency H.264 video encoding up to 4Kp60 with low latency 8th Generation Advanced Amlogic TruLife Image Engine with support for Dolby Vision (optional), HDR10+, HDR10, HLG, and HDR Vivid processing
AI accelerator	Up to 3.2 TOPS Neural Network Accelerator (NNA) with Tensor Processing Unit (TPU) architecture, supports TensorFlow and Caffe
Video output	HDMI 2.1a transmitter including both controller and PHY supporting CEC, Dynamic HDR, and HDCP 2.2/2.3, up to 8Kp60 max resolution output with support for eARC, VRR, QMS, QFT, ALLM, DSC & SBTM Support for MP3, AAC, WMA, RM, FLAC, Ogg Vorbis, Opus, SRS TruVolume, Dolby Audio (optional), DTS (optional), and programmable with 7.1/5.1 down-mixing Low-power VAD
Audio output	Built-in SPDIF input/output up to 192KHz 16/24/32bit stereo 3x built-in TDM/PCM/I2S ports with TDM/PCM mode up to 48kHz x 32bits x 32ch or 192kHz x 16bits x 16ch and I2S mode up to 384kHz x 32bits x 16ch Digital microphone PDM input with programmable CIC, LPF, HPF, support up to 8 DMICs Built-in stereo audio DAC
Network interface	10/100/1000 MAC
USB2.0 interface	1x USB XHCI OTG 2.0, 2x USB 2.0 host, 1x USB 3.0 (5 Gbps) multiplexed with PCIe 2.0

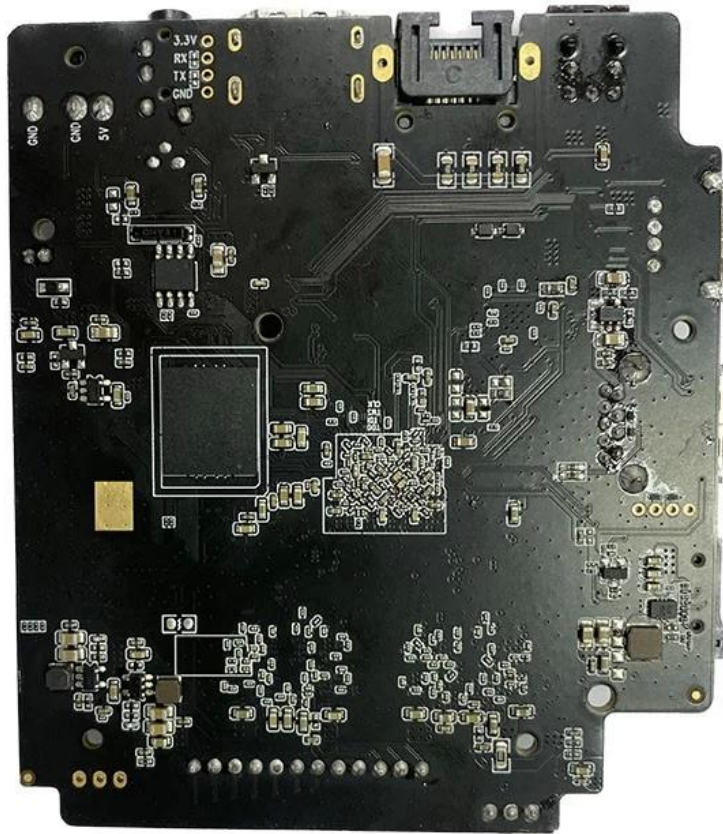
S928X



* Supported configuration: PCIe 2.0 port + USB 2.0 Host, or USB3.0 port without PCIe.







Amlogic S928X-J is the first 8K UHD smart STB SoC integrating ARM Cortex-A76, ARM Cortex-A55 and self-developed neural network processor. It supports 8Kp60 video decoding function of global mainstream video formats—AV1, H.265, VP9, AVS3, AVS2, etc. Meanwhile, 4K GUI, intelligent SR and other functions are viable as well, thus providing an outstanding hardware engine for customized high-end applications.

As the demand for high-performance multimedia entertainment continues to rise, Amlogic has once again delivered an innovative solution with the launch of its latest S928X-J chip. Designed to deliver a seamless, immersive multimedia experience, the S928X-J chip boasts a range of impressive features that are sure to impress tech enthusiasts and consumers alike.

One of the key selling points of the S928X-J chip is its powerful processing capabilities. The chip is equipped with an eight-core ARM Cortex-A53 CPU, which provides lightning-fast speeds and delivers exceptional performance for a wide range of multimedia applications. Whether you're streaming 4K content, playing high-definition games, or running multiple apps at once, the S928X-J chip ensures that you enjoy a smooth and uninterrupted experience.

Another standout feature of the S928X-J chip is its support for high-quality audio and video output. The chip supports up to 4K resolution at 60 frames per second, which means that you can enjoy your favorite movies and TV shows with breathtaking clarity and detail. Additionally, the chip supports HDR10 and HLG technologies, which provide a wider color gamut and better contrast, making your viewing experience more immersive than ever before.

The S928X-J chip is also designed to deliver a high-quality gaming experience. The chip is equipped with a powerful Mali-G31 MP2 GPU, which provides exceptional graphics performance and supports OpenGL ES3.2, Vulkan 1.1, and OpenCL 2.0. This means that you can play the latest games with stunning graphics and enjoy smooth, lag-free gameplay.

In addition to its impressive hardware specs, the S928X-J chip also features advanced software optimizations that enhance its performance and usability. The chip is based on the Android TV 10 operating system, which provides a user-friendly interface and access to a wide range of apps and content. The chip also supports Google Assistant, which allows you to control your TV and other connected devices with your voice.

The S928X-J chip is also designed with connectivity in mind. The chip supports dual-band Wi-Fi and Bluetooth 5.0, which ensure fast and reliable wireless connectivity. It also features a range of ports, including HDMI, USB, and Ethernet, which provide flexible connectivity options for a wide range of devices and peripherals.

Overall, the Amlogic S928X-J chip is a game-changing solution for high-performance multimedia entertainment. Its powerful processing capabilities, support for high-quality audio and video output, and advanced software optimizations make it a standout choice for tech enthusiasts and consumers who demand the best in multimedia entertainment. Whether you're streaming your favorite content, playing games, or using your TV for other applications, the S928X-J chip ensures that you enjoy a seamless, immersive experience.

The 8K [Android TV Box](#) with Amlogic S928X-J is the ultimate high-performance media player that brings your TV to life. It is a smart TV box that features dual-band Wi-Fi and HDR support, giving you seamless access to all your favorite streaming apps and services in stunning 8K resolution. With USB 3.0 and Bluetooth 5.0, you can easily connect your external devices and enjoy your media on the big screen. Whether you want to watch movies, TV shows, play games or browse the web, this TV box has got you covered.

Step into the future of entertainment with our Amlogic S928X-J 8K [Android TV Box](#) featuring WiFi 6E. Immerse yourself in stunning visuals and seamless streaming. This Android TV Box delivers 8K brilliance, elevating your viewing experience. With advanced WiFi 6E technology, enjoy fast and reliable connectivity. Explore a new dimension of entertainment with this powerful and feature-packed Android TV Box. Order now and redefine the way you experience TV!

Introducing our 8K Wi-Fi 6E Amlogic S928X-J OTT TV Box, a state-of-the-art device designed to redefine your entertainment landscape. With a perfect blend of advanced features, this TV box delivers an exceptional viewing experience, making it the ideal choice for those who demand the best in home entertainment.

Crystal-Clear 8K Resolution

The centerpiece of this TV box is its ability to support stunning 8K resolution. Enjoy crystal-clear visuals with unparalleled detail, vibrant colors, and lifelike images. Whether you're streaming the latest blockbuster or indulging in a gaming session, the S928X-J ensures a visual feast that sets a

new standard for home entertainment.

Cutting-Edge Wi-Fi 6E Connectivity

Stay ahead of the curve with Wi-Fi 6E technology, providing faster speeds, lower latency, and improved connectivity in congested environments. The S928X-J leverages this advanced Wi-Fi standard to ensure smooth streaming, lag-free gaming, and seamless browsing. Say goodbye to interruptions and hello to a truly connected experience.

Amlogic S928X-J Performance

At the heart of this TV box is the powerful Amlogic S928X-J chipset, delivering exceptional performance for a responsive and fluid user experience. Whether you're navigating through apps, multitasking, or enjoying resource-intensive content, the S928X-J ensures a snappy and reliable performance.

Feature-Rich OTT Experience

Enhance your streaming experience with a feature-rich OTT (Over-The-Top) platform. Access a myriad of apps, streaming services, and content libraries, transforming your TV into a comprehensive entertainment hub. The S928X-J makes it easy to discover, explore, and enjoy a vast array of digital content.

User-Friendly Interface

Navigating through your favorite content has never been easier. The user-friendly interface of the S928X-J ensures intuitive operation, making it accessible to users of all ages. Effortlessly switch between apps, customize settings, and explore the world of entertainment with simplicity at your fingertips.

Future-Ready Entertainment

As technology evolves, the S928X-J is ready to adapt. Its forward-looking design and upgradability ensure that you can enjoy the latest features and enhancements as they become available. Future-proof your entertainment setup with a device that grows with your evolving needs.

Conclusion

In conclusion, the 8K Wi-Fi 6E Amlogic S928X-J OTT TV Box is a game-changer in the realm of home entertainment. Elevate your viewing experience with breathtaking visuals, seamless connectivity, and a feature-packed interface. It's not just a TV box; it's a gateway to a new era of immersive entertainment.