

# Android TV Box Supplier Android TV Box Wholesales

<b>Specifications</b>	
Model No.	Amlogic A311D Android TV Box Supplier
CPU	Amlogic A311D Quad Core ARM Cortex A73 and Dual Core ARM Cortex A53 1.98Ghz
GPU	ARM Mali-G52 MP4 (6EE) OpenGL ES 3.2, Vulkan 1.1 and OpenCL 2.0
RAM	DDR4 2GB/4GB
ROM	16GB eMMC (Expandable up to 128GB)
OS	Android 9.0
<b>Video&amp;Audio CODEC</b>	
Decoding resolution	Support 4K H265 10Bit, H.264, AVS, MPEG-2 and many other formats
Multimedia Support	Support MPEG1, MPEG2, MPEG4, H.264, WMV, MKV, TS, flv and other video formats; Support MP3 and other audio formats; support JPG, JPEG, BMP, PNG, GIF and other photo formats
<b>Port</b>	
Video output	1 channel LVDS 40-pin 2.0mm double-pin, can support 8bit, 10bit screen; 1 channel HDMI output; 1 channel AV output
Video input	x1, MIPI CSI
Audio ouput	4-pin 2.5mm socket 25W@2 amplifier and 3W@2 speaker
Network interface	x1, 10M/100M Ethernet WIFI+BT, 2.4G single band or 2.4G/5G dual band for options PCIE slot (4G) x1 or M.2 slot (4G) x1 for options
USB2.0 interface	USB OTG x1 (available for HOST) USB HOST x7
Backlight interface	x2, 6-pin 2.0mm socket
Infrared interface	x1, 7-pin 2.0mm socket, supports both red and green LED indicators
Function expansion port	Serial ports x4
TF card slot	x1
SIM card slot	x1
RTC	Supports time synchronization
<b>Power</b>	
Power Supply	12V, 2.5DC Connector

# S922X



Supported configuration: PCIe2.0 port + USB2.0 Host, or USB3.0 without PCIe

S055T01

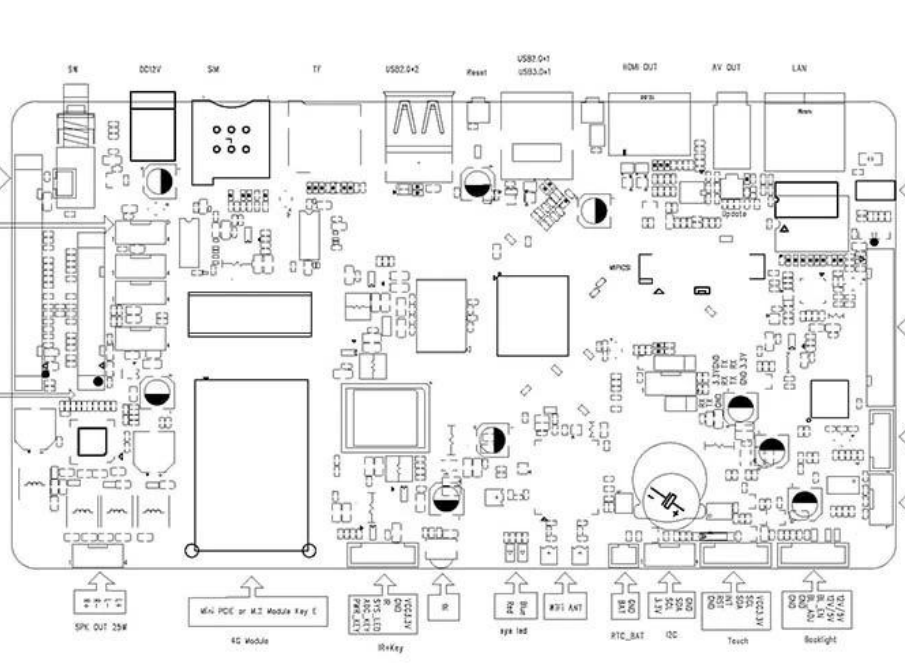


180mm

95mm

180mm\*95mm\*20mm

1	2	3	4	5	6	7	8	9	10	11	12	13	14	15	16	17	18	19	20	21	22	23	24	25	26	27	28	29	30	31	32	33	34	35	36	37	38	39	40	41	42	43	44	45	46	47	48	49	50	51	52	53	54	55	56	57	58	59	60	61	62	63	64	65	66	67	68	69	70	71	72	73	74	75	76	77	78	79	80	81	82	83	84	85	86	87	88	89	90	91	92	93	94	95	96	97	98	99	100
---	---	---	---	---	---	---	---	---	----	----	----	----	----	----	----	----	----	----	----	----	----	----	----	----	----	----	----	----	----	----	----	----	----	----	----	----	----	----	----	----	----	----	----	----	----	----	----	----	----	----	----	----	----	----	----	----	----	----	----	----	----	----	----	----	----	----	----	----	----	----	----	----	----	----	----	----	----	----	----	----	----	----	----	----	----	----	----	----	----	----	----	----	----	----	----	----	----	----	-----

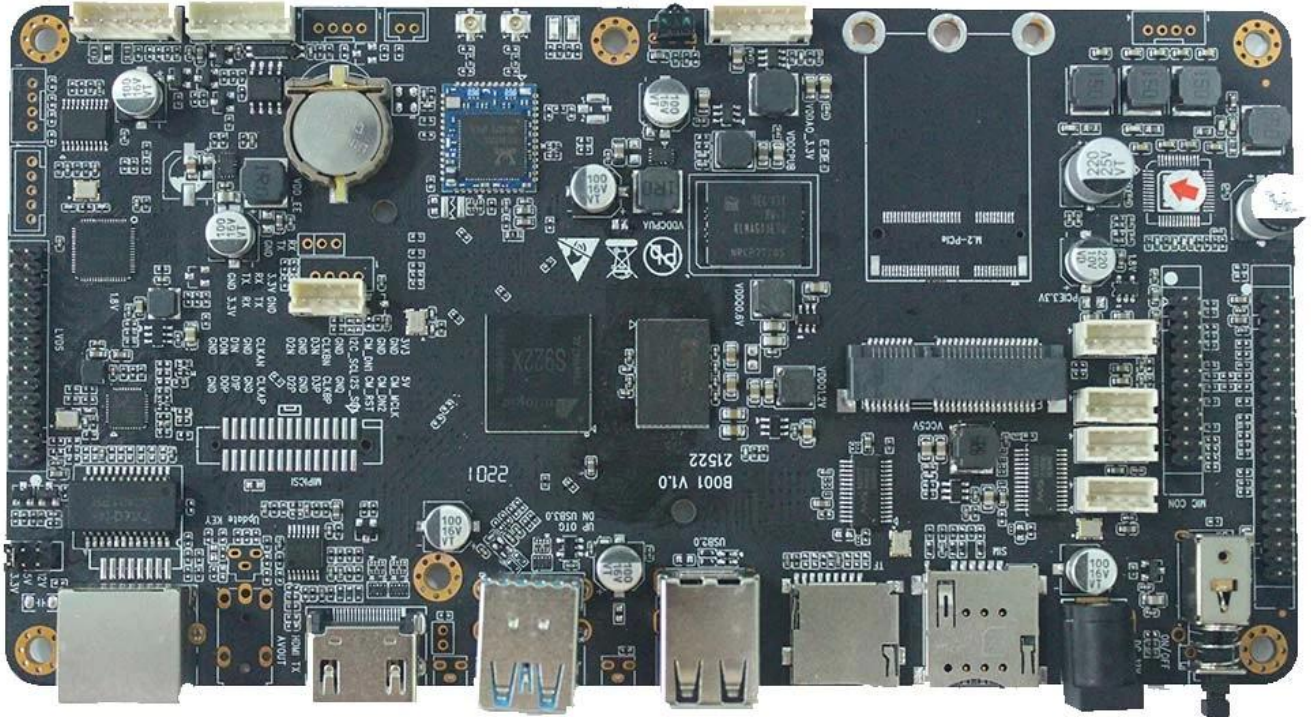


SW  
P1  
P2  
P3  
P4  
P5  
P6  
P7  
P8  
P9  
P10  
P11  
P12  
P13  
P14  
P15  
P16  
P17  
P18  
P19  
P20  
P21  
P22  
P23  
P24  
P25  
P26  
P27  
P28  
P29  
P30  
P31  
P32  
P33  
P34  
P35  
P36  
P37  
P38  
P39  
P40  
P41  
P42  
P43  
P44  
P45  
P46  
P47  
P48  
P49  
P50  
P51  
P52  
P53  
P54  
P55  
P56  
P57  
P58  
P59  
P60  
P61  
P62  
P63  
P64  
P65  
P66  
P67  
P68  
P69  
P70  
P71  
P72  
P73  
P74  
P75  
P76  
P77  
P78  
P79  
P80  
P81  
P82  
P83  
P84  
P85  
P86  
P87  
P88  
P89  
P90  
P91  
P92  
P93  
P94  
P95  
P96  
P97  
P98  
P99  
P100

SW  
P1  
P2  
P3  
P4  
P5  
P6  
P7  
P8  
P9  
P10  
P11  
P12  
P13  
P14  
P15  
P16  
P17  
P18  
P19  
P20  
P21  
P22  
P23  
P24  
P25  
P26  
P27  
P28  
P29  
P30  
P31  
P32  
P33  
P34  
P35  
P36  
P37  
P38  
P39  
P40  
P41  
P42  
P43  
P44  
P45  
P46  
P47  
P48  
P49  
P50  
P51  
P52  
P53  
P54  
P55  
P56  
P57  
P58  
P59  
P60  
P61  
P62  
P63  
P64  
P65  
P66  
P67  
P68  
P69  
P70  
P71  
P72  
P73  
P74  
P75  
P76  
P77  
P78  
P79  
P80  
P81  
P82  
P83  
P84  
P85  
P86  
P87  
P88  
P89  
P90  
P91  
P92  
P93  
P94  
P95  
P96  
P97  
P98  
P99  
P100

SW  
P1  
P2  
P3  
P4  
P5  
P6  
P7  
P8  
P9  
P10  
P11  
P12  
P13  
P14  
P15  
P16  
P17  
P18  
P19  
P20  
P21  
P22  
P23  
P24  
P25  
P26  
P27  
P28  
P29  
P30  
P31  
P32  
P33  
P34  
P35  
P36  
P37  
P38  
P39  
P40  
P41  
P42  
P43  
P44  
P45  
P46  
P47  
P48  
P49  
P50  
P51  
P52  
P53  
P54  
P55  
P56  
P57  
P58  
P59  
P60  
P61  
P62  
P63  
P64  
P65  
P66  
P67  
P68  
P69  
P70  
P71  
P72  
P73  
P74  
P75  
P76  
P77  
P78  
P79  
P80  
P81  
P82  
P83  
P84  
P85  
P86  
P87  
P88  
P89  
P90  
P91  
P92  
P93  
P94  
P95  
P96  
P97  
P98  
P99  
P100

SW  
P1  
P2  
P3  
P4  
P5  
P6  
P7  
P8  
P9  
P10  
P11  
P12  
P13  
P14  
P15  
P16  
P17  
P18  
P19  
P20  
P21  
P22  
P23  
P24  
P25  
P26  
P27  
P28  
P29  
P30  
P31  
P32  
P33  
P34  
P35  
P36  
P37  
P38  
P39  
P40  
P41  
P42  
P43  
P44  
P45  
P46  
P47  
P48  
P49  
P50  
P51  
P52  
P53  
P54  
P55  
P56  
P57  
P58  
P59  
P60  
P61  
P62  
P63  
P64  
P65  
P66  
P67  
P68  
P69  
P70  
P71  
P72  
P73  
P74  
P75  
P76  
P77  
P78  
P79  
P80  
P81  
P82  
P83  
P84  
P85  
P86  
P87  
P88  
P89  
P90  
P91  
P92  
P93  
P94  
P95  
P96  
P97  
P98  
P99  
P100



Amlogic A311D Android Development Board multimedia network player-LCD driver integrated board adopts Amlogic A311D 12nm high-end chip, which supports UHD 4K@60fps hardware video decoding. It also supports supports H.265 10-bit, H.264 and AVS+ and many other formats. Support HDR10 and HLG high dynamic range processing, with multi-channel UART and USB interfaces. Support Bluetooth, WIFI, 4G and Ethernet functions. Support AV serial use, SD card expansion. Perfectly supports all kinds of touch screens, suitable for high-performance intelligent display terminal equipment, industrial automation terminal, computer vision/algorithm, 3D experience, game/amusement equipment, high-performance face recognition computing/storage, AI intelligence, etc. It can be widely used as a high-end intelligent motherboard for various industries such as finance, advertising, security, transportation, and public transportation.

(1) With various interfaces

- 1 channel LVDS video output ( 40pins)
- 1 channel HDMI video output
- 5 channels USB2.0
- 4 channels RS232 (can be modified to USB2.0 by patch)
- 1 channel MIPI CSI
- 1 channel AV output
- 1 channel I2C

- I2SC/IS2B
- 1 channel 25W super power amplifier and 3W speaker interface
- (2) Hybrid networking to break through network constraints
- Support wired, WiFi and 4G access, can realize multi-network hybrid networking
- (3) Easy to operate & fast maintenance
- Support breakpoint playback
- Super multi-period timing switch function
- Support U disk loading or direct playback
- Support automatic repair, remote upgrade, intelligent domain name resolution

## Chip Performance

### CPU Sub-system

- (1) Quad Core ARM Cortex-A73 and Dual Core ARM Cortex-A53 CPU
- (2) ARMv8-A architecture with Neon and Crypto extensions
- (3) Unified system L2 cache
- (4) Build-in Cortex-M4 core for always on processing
- (5) Advanced TrustZone security system
- (6) Application based traffic optimization using internal QoS-based switching fabrics

### 3D Graphics Processing Unit

- (1) ARM Mali-G52 MP4 (4ppc) GPU
- (2) 8-wide warps, 2x dual texture pipe, 6x8-wide execution engines(EE)
- (3) Concurrent multi-core processing
- (4) OpenGL ES3.2, Vulkan 1.0 and OpenCL 2.0 support

### Video/Picture CODEC

- (1) Amlogic Video Engine (AVE) with dedicated hardware decoders and encoders
- (2) Support multi-video decoder up to 4Kx2K@60fps+1x1080P@60fps
- (3) Supports multiple "secured" video decoding sessions and simultaneous decoding and encoding
- (4) Video/Picture Decoding

### VP9 Profile-2 up to 4Kx2K@60fps

H.265 HEVCMP-10@L5.1 upto 4Kx2K@60fps

AVS2-P2 Profile up to 4Kx2K@60fps

H.264 AVCHP@L5.1 upto 4Kx2K@30fps

H.264 MVC up to 1080P@60fps

MPEG-4 ASP@L5 up to 1080P@60fps (ISO-14496)

WMV/VC-1 SP/MP/AP up to 1080P@60fps

AVS-P16(AVS+) /AVS-P2 JiZhun Profile up to 1080P@60fps

MPEG-2 MP/HL up to 1080P@60fps(ISO-13818)

MPEG-1MP/HL upto 1080P@60fps(ISO-11172)

RealVideo 8/9/10 up to 1080P@60fps

Multiple language and multiple format sub-title videosupport

MJPEG and JPEG unlimited pixel resolution decoding(ISO/IEC-10918)

Supports JPEG thumbnail, scaling, rotation and transition effects

Supports \*.mkv,\*.wmv,\*.mpg, \*.mpeg, \*.dat, \*.avi,\*.mov, \*.iso,\*.mp4, \*.rm and\*.jpg file formats

### (5) Video/Picture Encoding

Independent JPEG and H.265/H.264 encoder with configurable performance/bit-rate

JPEG image encoding

H.265/H.264 video encoding up to 1080P@60fps with low latency

### Video Output

- (1) Built-in HDMI 2.1 transmitter including both controller and PHY with CEC, Dynamic HDR and HDCP 2.2, 4Kx2K@60 max resolution output
- (2) CVBS 480i/576i standard definition output
- (3) Supports all standard SD/HD/FHD video output formats: 480i/p, 576i/p, 720p, 1080i/p and 4Kx2K
- (4) 4-lane MIPI DSI interface, resolution up to 1920\*1080 with rotation and panel calibration

## Chip Performance

#### CPU Sub-system

- (7) Quad Core ARM Cortex-A73 and Dual Core ARM Cortex-A53 CPU
- (8) ARMv8-A architecture with Neon and Crypto extensions
- (9) Unified system L2 cache
- (10) Build-in Cortex-M4 core for always on processing
- (11) Advanced TrustZone security system
- (12) Application based traffic optimization using internal QoS-based switching fabrics

#### 3D Graphics Processing Unit

- (5) ARM Mali-G52 MP4 (4ppc) GPU
- (6) 8-wide warps, 2xdual texture pipe, 6x8-wide execution engines(EE)
- (7) Concurrent multi-core processing
- (8) OpenGL ES3.2, Vulkan 1.0 and OpenCL 2.0 support

#### Video/Picture CODEC

- (6) Amlogic Video Engine (AVE) with dedicated hardware decoders and encoders
- (7) Support multi-video decoder up to 4Kx2K@60fps+1x1080P@60fps
- (8) Supports multiple "secured" video decoding sessions and simultaneous decoding and encoding
- (9) Video/Picture Decoding

#### VP9 Profile-2 up to 4Kx2K@60fps

- H.265 HEVCMP-10@L5.1 upto 4Kx2K@60fps
- AVS2-P2 Profile up to 4Kx2K@60fps
- H.264 AVCHP@L5.1 upto 4Kx2K@30fps
- H.264 MVC up to 1080P@60fps
- MPEG-4 ASP@L5 up to 1080P@60fps (ISO-14496)

#### WMV/VC-1 SP/MP/AP up to 1080P@60fps

- AVS-P16(AVS+) /AVS-P2 JiZhun Profile up to 1080P@60fps
- MPEG-2 MP/HL up to 1080P@60fps(ISO-13818)

#### MPEG-1MP/HL upto 1080P@60fps(ISO-11172)

#### RealVideo 8/9/10 up to 1080P@60fps

#### Multiple language and multiple format sub-title videosupport

#### MJPEG and JPEG unlimited pixel resolution decoding(ISO/IEC-10918)

#### Supports JPEG thumbnail, scaling, rotation and transition effects

#### Supports \*.mkv,\*.wmv,\*.mpg, \*.mpeg, \*.dat, \*.avi,\*.mov, \*.iso,\*.mp4, \*.rm and\*.jpg file formats

#### (10) Video/Picture Encoding

#### Independent JPEG and H.265/H.264 encoder with configurable performance/bit-rate

#### JPEG image encoding

#### H.265/H.264 video encoding up to 1080P@60fps with lowlatency

#### Video Output

- (5) Built-in HDMI 2.1 transmitter including both controller and PHY with CEC, Dynamic HDR and HDCP 2.2, 4Kx2K@60 max resolution output
- (6) CVBS 480i/576i standard definition output
- (7) Supports all standard SD/HD/FHD video output formats: 480i/p, 576i/p, 720p, 1080i/p and 4Kx2K
- (8) 4-lane MIPI DSI interface, resolution up to 1920\*1080 with rotation and panel calibration

Welcome to the world of cutting-edge entertainment brought to you by our esteemed Android TV Box Supplier, specializing in top-tier Android TV Box Wholesales. Let's delve into how our innovative Android TV Box can transform your home entertainment setup.

### **Unmatched Features and Performance:**

1. **4K Ultra HD Resolution:** Immerse yourself in crystal-clear visuals with support for 4K Ultra HD resolution, bringing your favorite movies, shows, and videos to life with stunning detail and vibrant colors.

2. **Seamless Streaming:** Enjoy uninterrupted streaming of your favorite content with robust connectivity options, including dual-band Wi-Fi and Ethernet, ensuring smooth playback without buffering or interruptions.
3. **Extensive App Selection:** Explore a vast array of apps, including streaming services like Netflix, Amazon Prime Video, Hulu, and more, along with access to productivity tools, games, and utilities via the Google Play Store.
4. **Voice Control:** Simplify your TV experience with built-in voice control, allowing you to search for content, adjust settings, and navigate apps using just your voice, thanks to advanced voice recognition technology.
5. **Expandable Storage:** With support for external storage devices via USB ports, expand the storage capacity of your Android TV Box to store more apps, games, and media files for convenient access.
6. **Multi-Device Compatibility:** Connect a range of peripherals such as keyboards, mice, gaming controllers, and USB drives to enhance functionality and customize your entertainment setup to suit your preferences.

#### **Enhanced Entertainment and Connectivity:**

1. **Live TV Integration:** Access live TV channels, sports events, news broadcasts, and more through compatible apps and services, transforming your Android TV Box into a comprehensive entertainment hub.
2. **Gaming Experience:** Dive into a world of gaming with access to a vast library of Android games, from casual titles to immersive gaming experiences, all playable on your big screen with support for game controllers.
3. **Smart Home Integration:** Control compatible smart home devices directly from your TV, managing lighting, thermostats, security cameras, and more with ease, creating a seamless connected home experience.
4. **Regular Software Updates:** Stay up-to-date with the latest features, security patches, and performance enhancements through regular over-the-air software updates, ensuring your Android TV Box remains optimized and secure.

#### **Unleash the Power of Entertainment:**

Discover the next level of entertainment with our top [Android TV Box](#) Supplier and the exceptional Android TV Box Wholesales. Elevate your viewing experience, stay connected, and unlock a world of entertainment possibilities right from your living room.