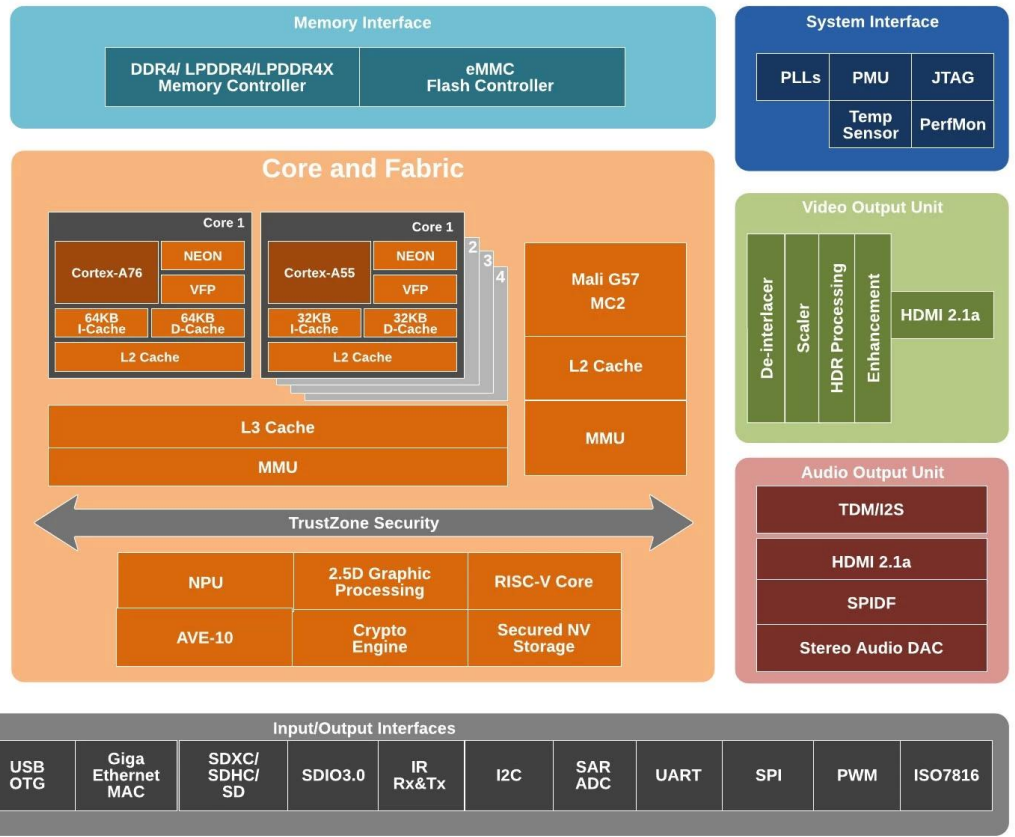
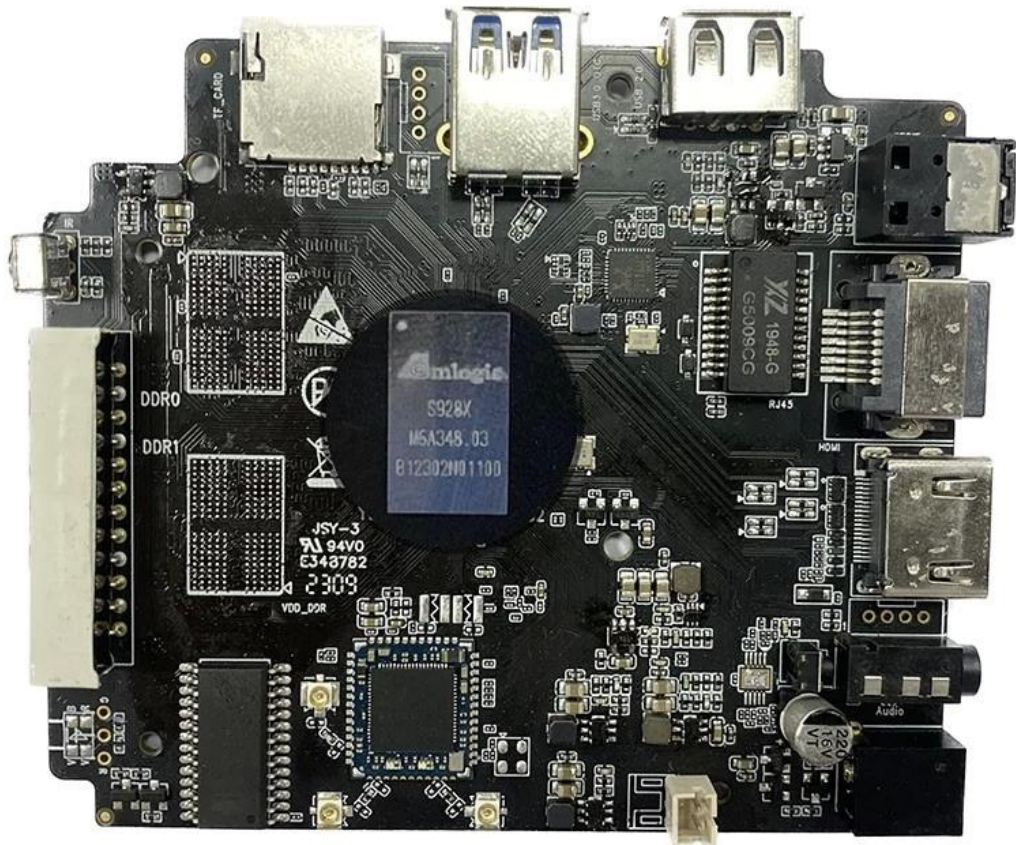
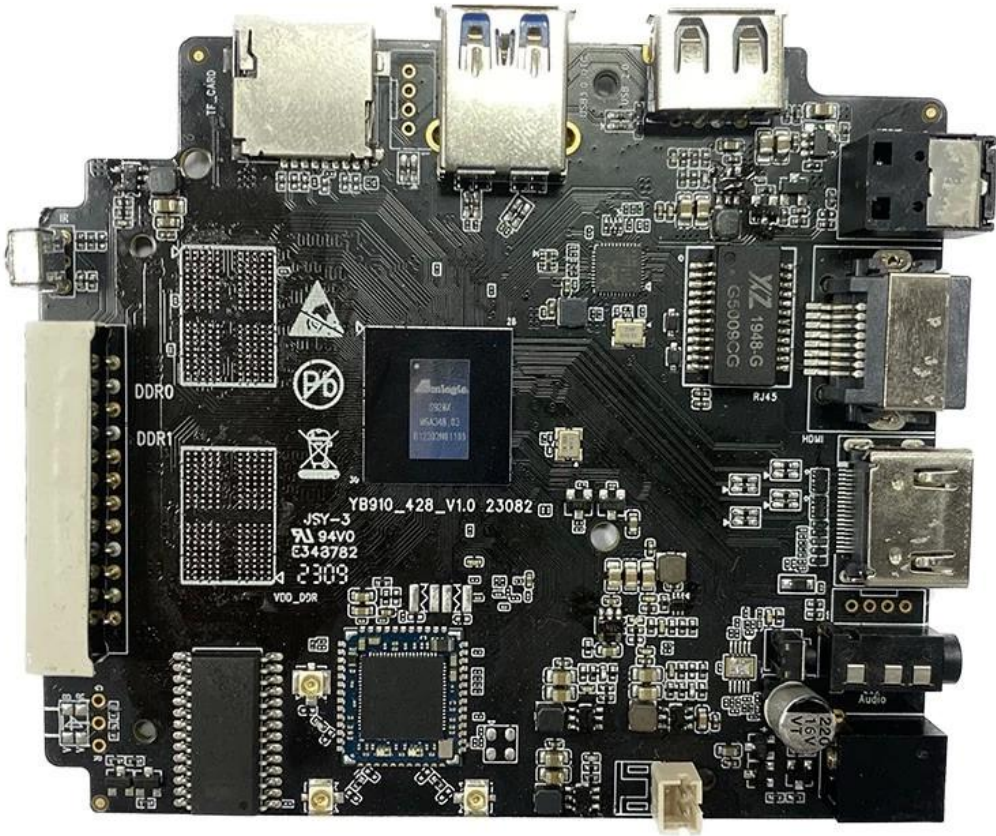


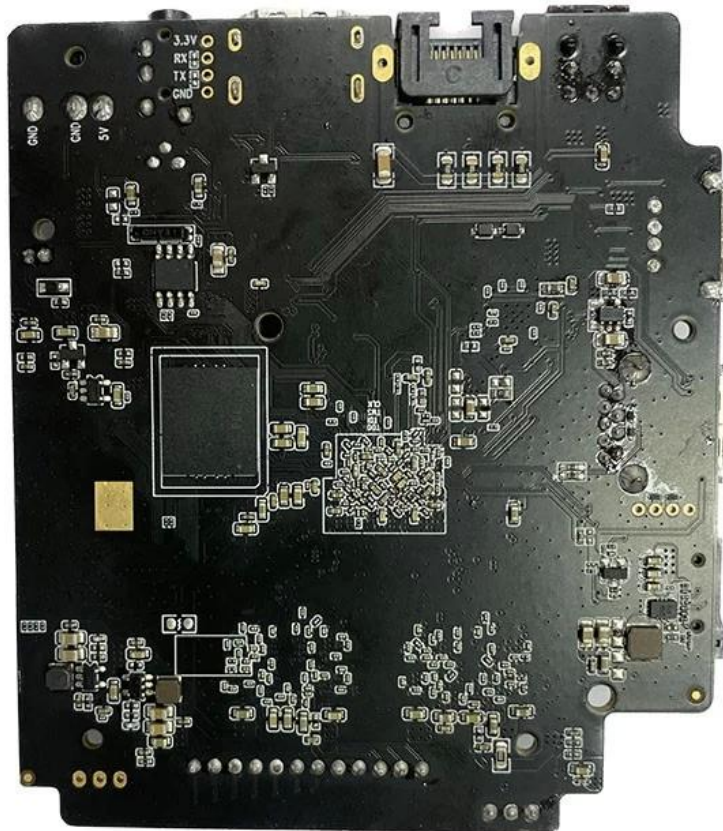
S928X



* Supported configuration: PCIe 2.0 port + USB 2.0 Host, or USB3.0 port without PCIe.







Amlogic S928X ARM Cortex-A76 ARM Cortex-A55 8K SoC
—AV1 H.265 VP9 AVS3 AVS2 8Kp60 4K GUI SR

Amlogic S928X S928X

S928X ARM Cortex-A53 CPU 4K S928X

S928X 60 4K HDR10 HLG

S928X Mali-G31 MP2 GPU OpenGL ES3.2 Vulkan 1.1
OpenCL 2.0

S928X Android TV 10 Google Assistant

S928X 支持Wi-Fi 5.0、HDMI、USB 接口

Amlogic S928X 芯片支持S928X 芯片

8K 支持 Amlogic S928X 芯片支持 Wi-Fi、HDR、8K、USB 3.0、5.0 接口