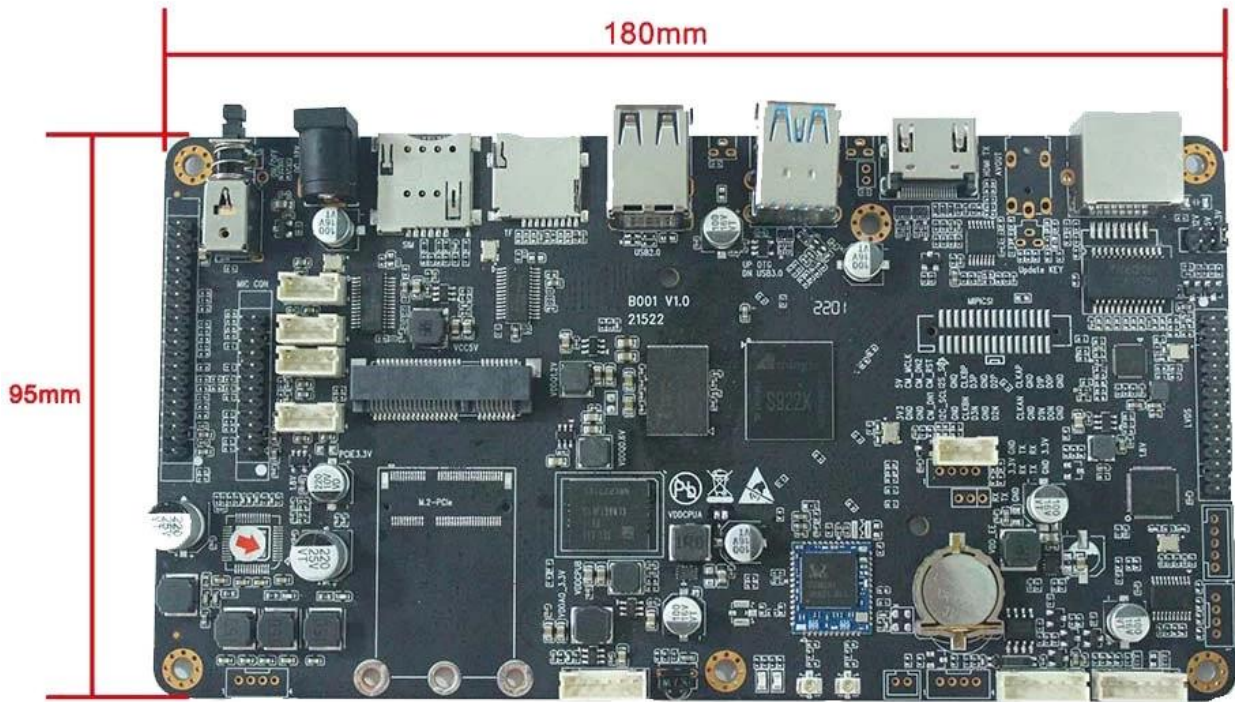


S922X

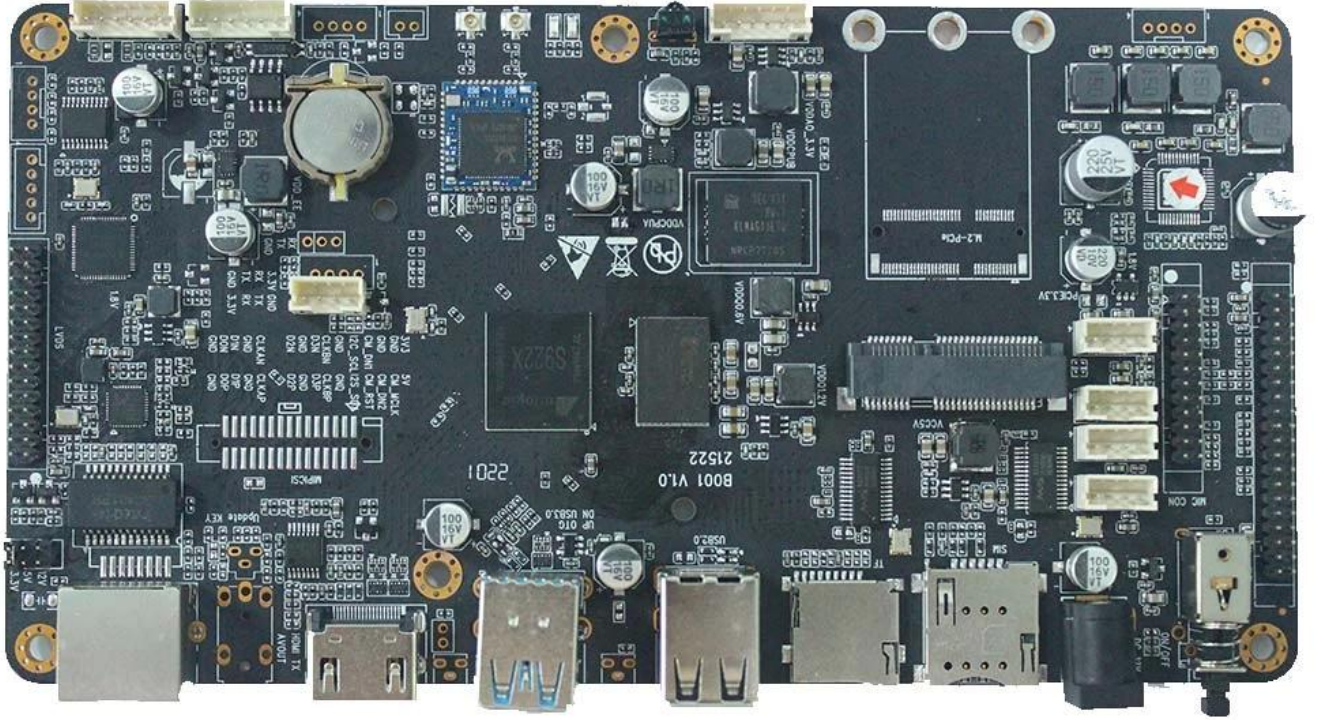


Supported configuration: PCIe2.0 port + USB2.0 Host, or USB3.0 without PCIe

S055T01



180mm*95mm*20mm



- 支持WiFi4
- (3) 支持4G
- 支持
- 支持
- 支持
- 支持

接口

CPU

- (1) ARM Cortex-A73 ARM Cortex-A53 CPU
- (2) Neon Crypto ARMv8-A
- (3)
- (4) Cortex-M4
- (5) TrustZone
- (6) QoS

3D

- (1) ARM Mali-G52 MP4 (4ppc) GPU
- (2) 8x2x6x8 (EE)
- (3)
- (4) OpenGL ES3.2 Vulkan 1.0 OpenCL 2.0

编解码

- (1) Amlogic (AVE)
- (2) 4Kx2K@60fps 1x1080P@60fps
- (3) “”
- (4) /
- VP9 Profile-2 4Kx2K@60fps
- H.265 HEVCMP-10@L5.1 4Kx2K@60fps
- AVS2-P2 4Kx2K@60fps
- H.264 AVCHP@L5.1 4Kx2K@30fps
- H.264 MVC 1080P@60fps
- MPEG-4 ASP@L5 1080P@60fps (ISO-14496)
- WMV/VC-1 SP/MP/AP 1080P@60fps
- AVS-P16(AVS) /AVS-P2 1080P@60fps
- MPEG-2 MP/HL 1080P@60fps(ISO-13818)
- MPEG-1MP/HLupto1080P@60fps(ISO-11172)
- RealVideo 8/9/10 1080P@60fps
-
- MJPEG JPEG (ISO/IEC-10918)
- JPEG
- *.mkv*.wmv*.mpg*.mpeg*.dat*.avi*.mov*.iso*.mp4*.rm *.jpg
- (5) /
- JPEG H.265/H.264
- JPEG
- H.265/H.264 1080P@60fps

接口

- (1) HDMI 2.1 PHY CEC HDR HDCP 2.2 4Kx2K@60
- (2) CVBS 480i/576i
- (3) SD/HD/FHD 480i/p 576i/p 720p 1080i/p 4Kx2K
- (4) 4 MIPI DSI 1920*1080

接口

CPU

- (7) ARM Cortex-A73 ARM Cortex-A53 CPU
- (8) Neon Crypto ARMv8-A
- (9)
- (10) Cortex-M4
- (11) TrustZone
- (12) QoS

3D

- (5) ARM Mali-G52 MP4 (4ppc) GPU
- (6) 8x2x6x8(EU)
- (7)
- (8) OpenGL ES3.2 Vulkan 1.0 OpenCL 2.0

/

- (6) Amlogic(AVE)
- (7) 4Kx2K@60fps1x1080P@60fps
- (8) " "
- (9)
- VP9 Profile-2 4Kx2K@60fps
- H.265 HEVCMP-10@L5.1 4Kx2K@60fps
- AVS2-P2 4Kx2K@60fps
- H.264 AVCHP@L5.1 4Kx2K@30fps
- H.264 MVC 1080P@60fps
- MPEG-4 ASP@L5 1080P@60fps (ISO-14496)
- WMV/VC-1 SP/MP/AP 1080P@60fps
- AVS-P16(AVS) /AVS-P2 1080P@60fps
- MPEG-2 MP/HL 1080P@60fps(ISO-13818)
- MPEG-1MP/HLupto1080P@60fps(ISO-11172)
- RealVideo 8/9/10 1080P@60fps
-
- MJPEG JPEG (ISO/IEC-10918)
- JPEG
- *.mkv*.wmv*.mpg*.mpeg*.dat*.avi*.mov*.iso*.mp4*.rm *.jpg
- (10)
- JPEG H.265/H.264
- JPEG
- H.265/H.264 1080P@60fps

- (5) HDMI 2.1 PHY CEC HDR HDCP 2.2 4Kx2K@60
- (6) CVBS 480i/576i
- (7) SD/HD/FHD 480i/p 576i/p 720p 1080i/p 4Kx2K
- (8) 4 MIPI DSI 1920*1080

Amlogic A311D2

Amlogic A311D2

1. Amlogic A311D2 Cortex-A73 CPU Cortex-A53 CPU ARM Mali-G52 GPU
2. HDMI USB Wi-Fi

3. 4K HDR

4.

5. SDK

6. Amlogic A311D2

7.

Amlogic A311D2