

Amlogic S928X-J 8K WiFi 6E

芯片

Amlogic S928X-J

CPU Amlogic S928X-J ARM Cortex-A76 ARM Cortex-A55

GPU ARM Mali-G57 MC2 4K GUI OpenGL ES 3.2 Vulkan 1.2 OpenCL 2.0

NPU 3.2 TOPS

内存 64 GB DDR4 LPDDR4/4X 8GB DDR4266

eMMC eMMC 5.1 SLC NAND

视频编解码器 Amlogic AVE

AV1

AV1 MP-10 @ L6.1 8Kp60

VP9 Profile-2 @ 6.1 8Kp60

H.265 HEVC MP-10 @ L6.1 8Kp60

AVS3 1 8Kp60

AVS2-P2 8Kp60

H.264 AVC HP @ L5.2 4Kp60

视频编解码器 MPEG-4 WMV/VC-1 AVS MPEG-2 MPEG-1 1080p60

MJPEG JPEG (ISO/IEC-10918)

4x 4Kp60

JPEG

JPEG 4Kp60

H.265 4Kp60

H.264 4Kp60

8 Amlogic TruLife Dolby Vision HDR10 HDR10+ HLG HDR Vivid

神经网络

神经网络 3.2 TOPS (NNA) (TPU) TensorFlow Caffe

接口 HDMI 2.1a PHY CEC HDR HDCP 2.2/2.3 8Kp60

接口 eARC VRR QMS QFT ALLM DSC SBTM

MP3 AAC WMA RM FLAC Ogg Vorbis Opus SRS TruVolume Dolby Audio

DTS 7.1/5.1

VAD

接口 SPDIF 192kHz 16/24/32

3 TDM/PCM/I2S TDM/PCM 48kHz x 32bits x 32ch 192kHz x 16bits x

16ch I2S 384kHz x 32bits x 16ch

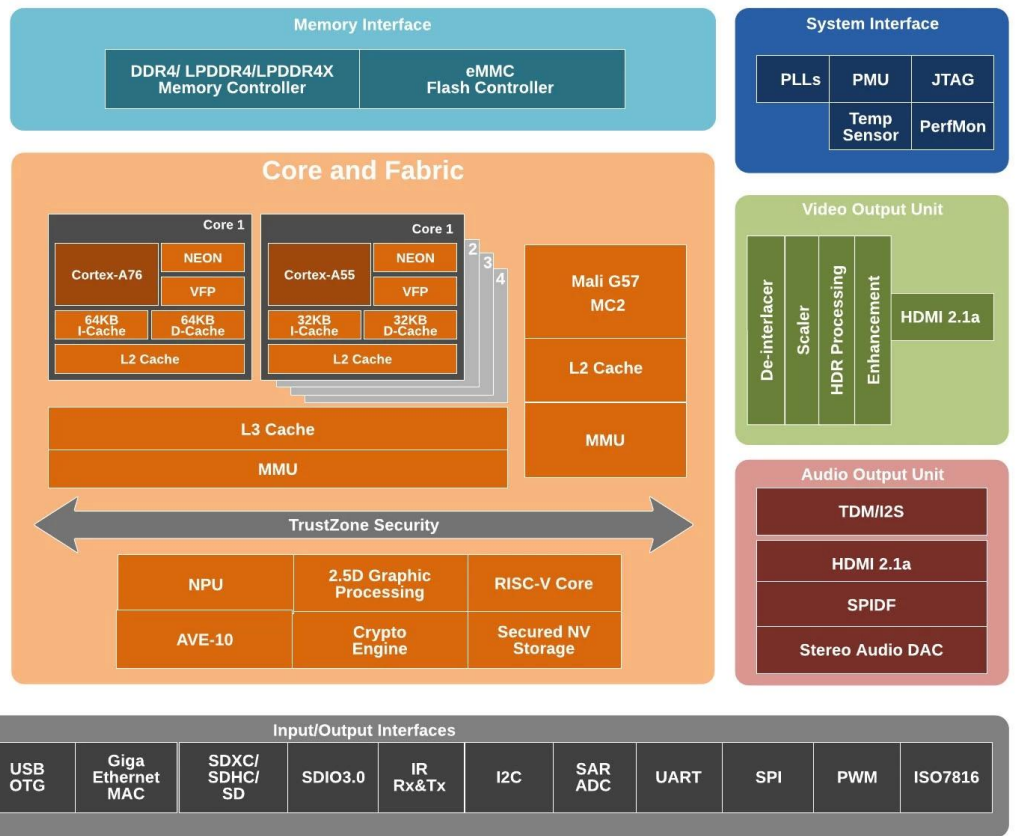
PDM CIC LPF HPF 8 DMIC

DAC

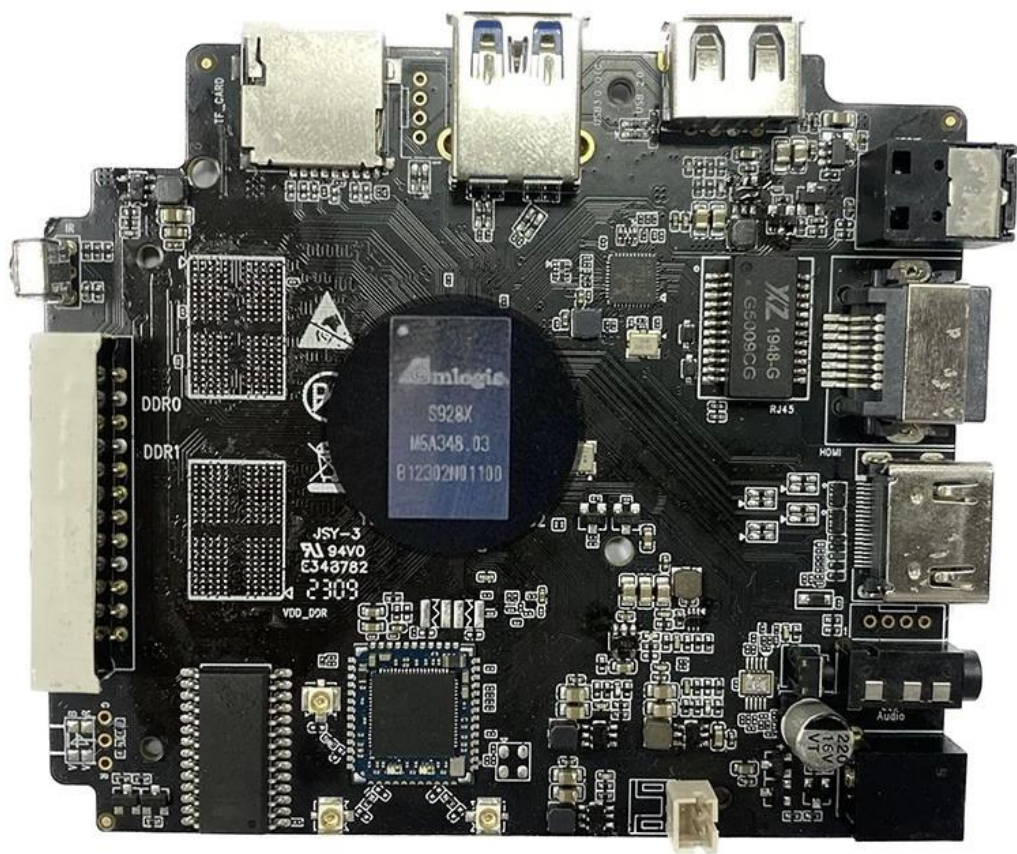
接口 10/100/1000 MAC

USB2.0 1x USB XHCI OTG 2.0 2x USB 2.0 1x USB 3.0 (5 Gbps) PCIe 2.0

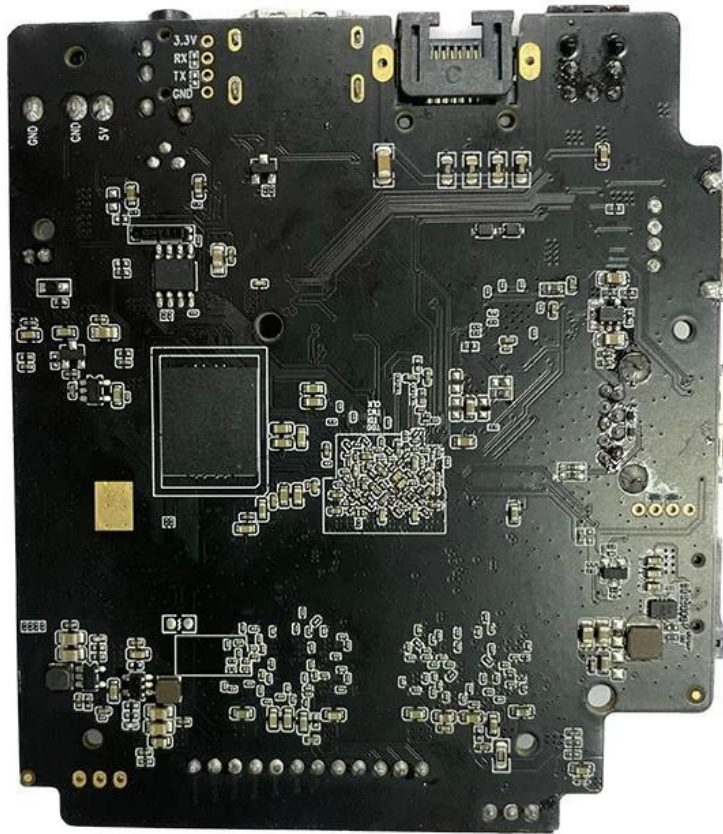
S928X



* Supported configuration: PCIe 2.0 port + USB 2.0 Host, or USB3.0 port without PCIe.







Amlogic S928X-J SoC ARM Cortex-A76 ARM Cortex-A55 8K SoC
AV1 H.265 VP9 AVS3 AVS2 8Kp60 4K GUI SR

Amlogic S928X-J S928X-J

S928X-J ARM Cortex-A53 CPU 4K S928X-J

S928X-J 60 4K HDR10 HLG

S928X-J Mali-G31 MP2 GPU OpenGL ES3.2 Vulkan 1.1 OpenCL 2.0

S928X-J Android TV 10 Google Assistant

