

Android 5.1 Amlogic S905 64 Cortex-A53 1G RAM 8G ROM 2.0GHz G9C

Amlogic S905 Quad Core WiFi Device Smart Box
Watch TV Channels Through Wifi or Internet



G9C



Model	G9C
Processor	Amlogic S905 Quad Core ARM Cortex™ -A53 CPU @ 2.0 GHz (DVFS)
GPU	Mali-450 @ 750Mhz
RAM	8GB
Storage	1GB DDR3
Power	5V/2A
LED	RGB LED
OS	Android™ 5.1
3D	3D@1080Px2
Video	MPEG1/2/4, H.264 /H.265, VC-1, RM/RMVB, Xvid/DivX3/4/5/6, RealVideo8/9/10, HEVC MP-10
Audio	Avi/Rm/Rmvb/Ts/Vob/Mkv/Mov/ISO/Wmv/Asf/Flv/Dat/Mpg/Mpeg/ MP4
Audio	MP3/WMA/AAC/WAV/OGG/AC3/DDP/TrueHD/DTS/DTS/HD/FLAC/APE
Image	JPEG/BMP/GIF/PNG/TIFF
USB	2x USB 2.0, 1x USB3.0
Storage	Micro SD /SDHC/MMC
File System	FAT16/FAT32/NTFS
Subtitles	SRT/SMI/SUB/SSA/IDX/USB
Input	IR, Remote Control, SD/HD/4K2K
OSD	OSD Menu
Network	1000Mbps RJ-45, IEEE 802.3 10/100/1000
Network	IEEE802.11 b/g/n, 4.1EDR
Bluetooth	USB Bluetooth 2.4GHz, USB 2.4GHz
HDMI	HDMI™ 2.0, CEC, HDCP 2.2, 4K X 2K @60 fps
AV	AV
3G	3G
SPDIF/IEC958	SPDIF
IPTV / OTT	IPTV, OTT

□□□□	
□□□□	Miracast□Kodi□Airplay□Skype □□□Picasa□Youtube□Flicker□Facebook□□□□□□
□□□□	□□□□□□□□□□Android□□□□□□□□□□

□□□□□□□□ □

1*□□□□□□

1 □ HDMI □

1*□□□□

1*□□□□□□

1*□□□□□□



Picture Show



Indicator Light Port





Micro SD Card

USB

USB



AV Port

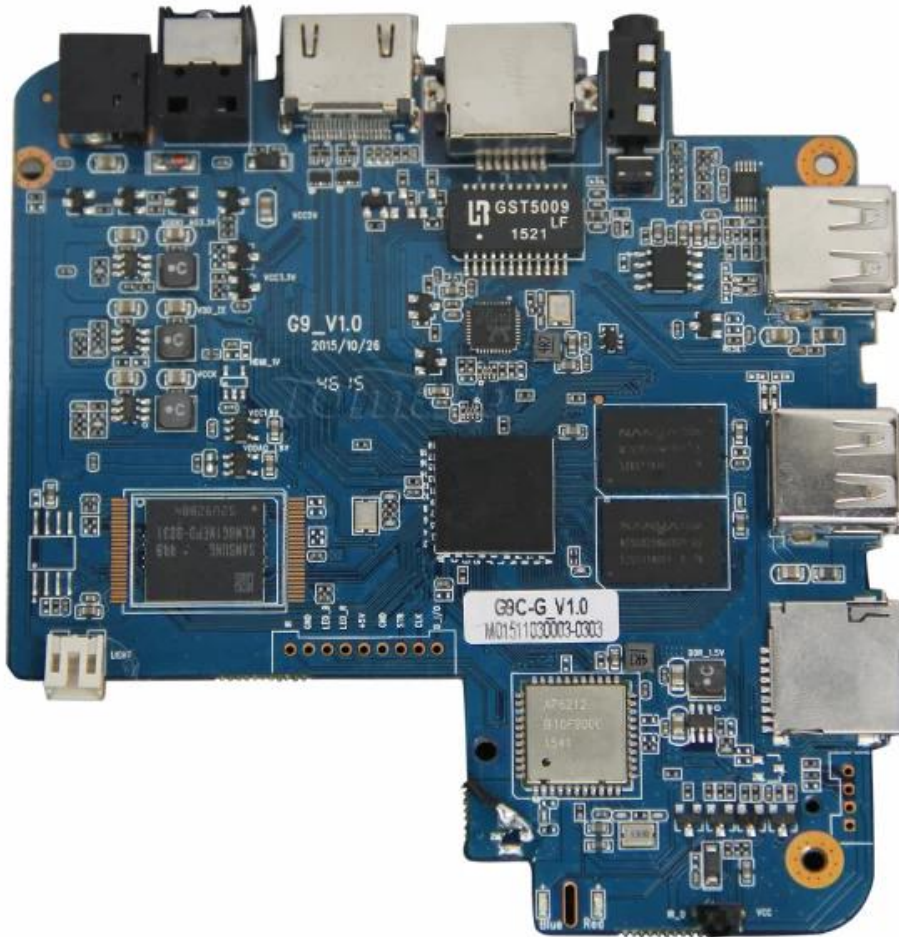
RJ 45 ETHERNET

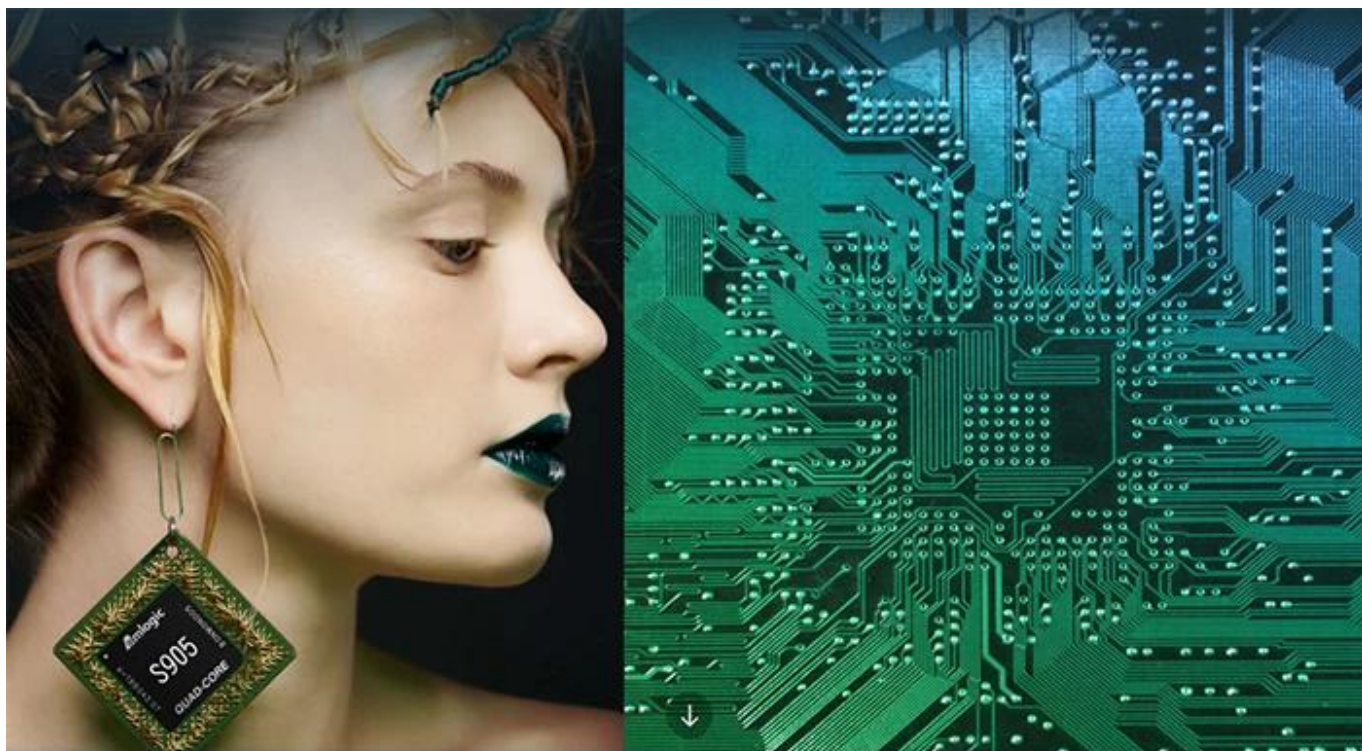
HDMI™

Optical Port

Power Port







S905

64-Bit
Quad Core
Cortex A53

4K

H.265
@60fps

HDMI 2.0
HDCP 2.2

TSMC
28NM

DRM



64 bit CPU,

While maintaining the same power consumption, the computing power of CPU has also been greatly improved.

With 4K2K decoding capabilities,
it make 4K become the standard.



The color quantity is increase by 60 times more than the previous generation.



10 bit decoding, it could highest support 1.07 billion color,
Compared to the previous generation of 16.7 million colors, it increase by 60 times.

The sound upgrade,
while supporting Dolby Digital Plus and DTS.



3 + 2 core high-frequency GPU,
it make the TV turn into the PlayStation.



The single core CPU frequency increase of 25%, 5-core computing speed can be achieved by the previous generation 8-core, it allowing you to experience smooth gaming.

Support 802.11ac WiFi protocol.

200 Mbps
实际速率

120 Mbps
上一代实际速率



Wireless projection the image&video
of the phone/computer onto the TV.



Miracast



Airplay



DLNA



SMB
共享协议



Intel@WIDI

Equipped with smart contiguous
memory allocation technology,
make the system running more smoothly.



4.1



Bluetooth[®]



HD2.0
Image output



HD1.0
Image output

Home entertainment, perfect enjoyment

- Extreme graphics, HD2.0 Image output
 - 1000M Ethernet LAN
-



Unforgettable visual
experience.

1920 * 1080 HD



Support 3D



1080P



Ultra Wide Vision

It's all about speeding up.



1G DDR3 dual channel memory and 8GB eMMC high speed flash memory.

The dual channel memory runs 1080p HD videos and large games flawlessly,
while the eMMC high speed flash memory controls apps, games, and multi-media storage with ease.

Everything comes alive with 3D.



Experience home entertainment in 3D!



S905

One of industry's first multimedia SoCs with 64-bit architecture, S905 is designed to deliver immersive theatre-level home entertainment to the users with excellent audio and video processing capabilities. It also supports operator-level security and is a perfect choice for OTT/IPTV/DVB STB, TV dongle and smart home applications.