

XBMC Kodi Android Android 1080P 4K

Amlogic S905 Quad Core WiFi Device Smart Box
Watch TV Channels Through Wifi or Internet



G9C

DRM	64-Bit Quad Core Cortex A53	H.265 @60fps	4K	HDMI 2.0 HDCP 2.2	TSMC 28NM
------------	-----------------------------	--------------	-----------	-------------------	-----------

General	
Model	G9C Android
Processor	Amlogic S905 ARM Cortex™-A53 CPU 2.0 GHz DVFS
GPU	Mali-450 750Mhz +
Storage	8GB EMMC
RAM	1GB DDR3
Power	
Power	5V / 2A
LED	IR LED
OS	
OS	Android™ 5.1
3D	3D 1080Px2
Video	MPEG1 / 2/4 H.264/H.265 AVC / VC-1 RM / RMVB Xvid / DivX3 / 4/5/6 RealVideo8 / 9/10 HEVC MP-10
Audio	Avi / Rm / Rmvb / Ts / Vob / Mkv / Mov / ISO / Wmv / Asf / Flv / Dat / Mpg / Mpeg /MP4
Audio	MP3 / WMA / AAC / WAV / OGG / AC3 / DDP / TrueHD / DTS / DTS / HD / FLAC / APE
Image	JPEG / BMP / GIF / PNG / TIFF
USB	2x USB 2.0 USB
Storage	™ / SDHC / MMC
Storage	FAT16 / FAT32 / NTFS
Storage	SRT / SMI / SUB / SSA / IDX + USB
Storage	SD / HD / 4K2K Ultra HD
OSD	OSD
Network	1000Mbps RJ-45 IEEE 802.3 10/100/1000
Network	IEEE802.11 b / g / n 4.1EDR
Network	USB Dongle 2.4GHz USB Dongle 2.4GHz
HDMI™	HDMI™ 2.0 CEC HDCP 2.2 4K X 2K @ 60 fps
Port	
Port	
PoE	
SPDIF / IEC958	
IPTV/OTT	IPTV/OTT
Features	
Features	Miracast Kodi Airplay Skype Picasa Youtube Flickr Facebook
Features	Android



Picture Show



Indicator Light Port





Micro SD Card

USB

USB



AV Port

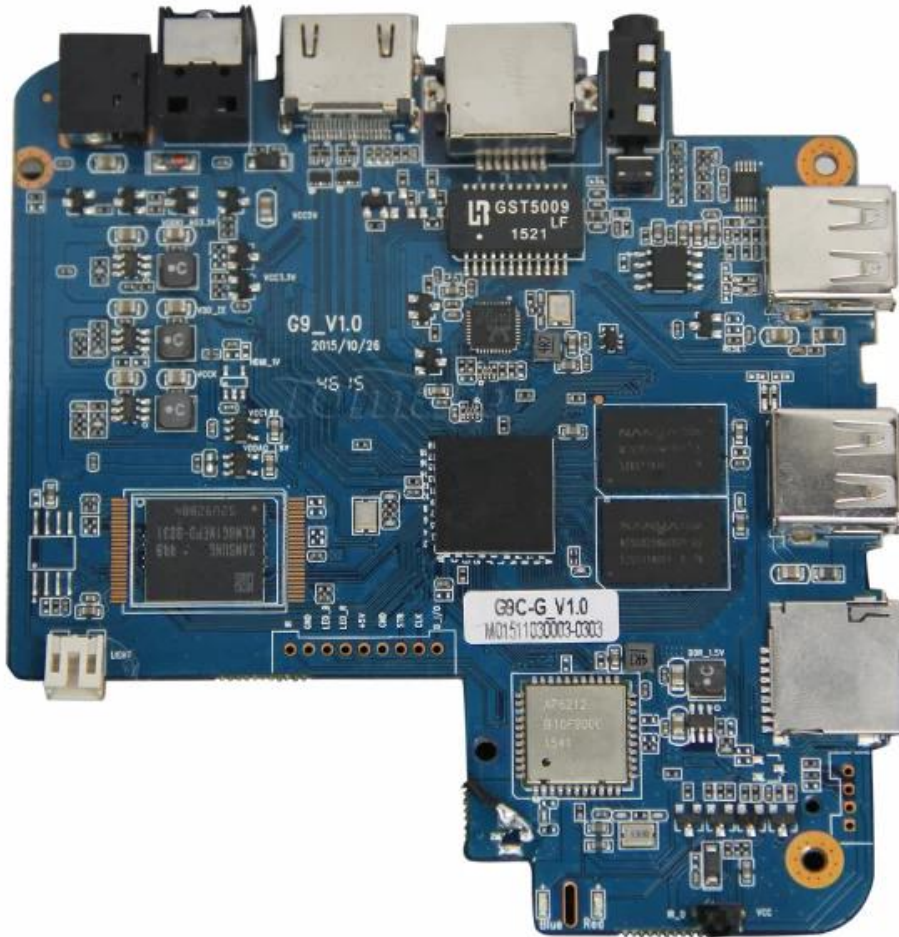
RJ 45 ETHERNET

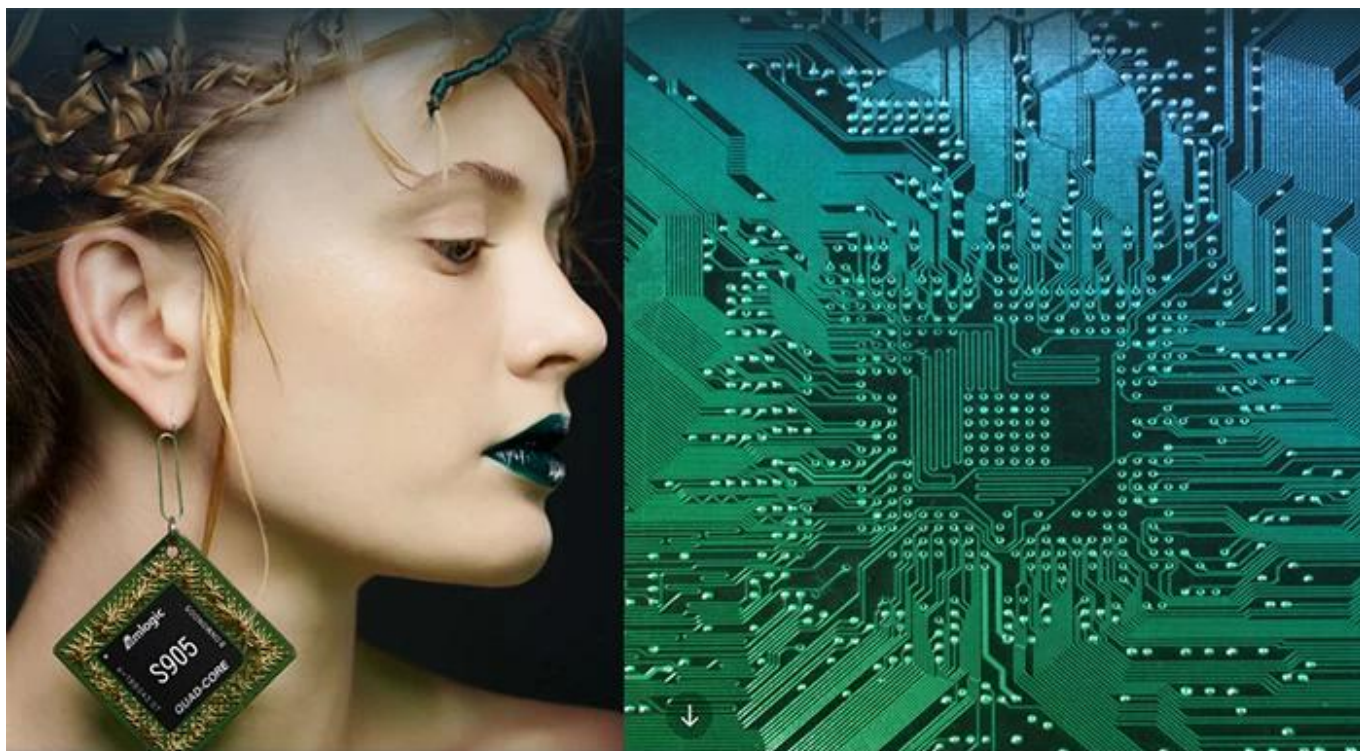
HDMI™

Optical Port

Power Port







S905

64-Bit
Quad Core
Cortex A53

4K

H.265
@60fps

HDMI 2.0
HDCP 2.2

TSMC
28NM

DRM



64 bit CPU,

While maintaining the same power consumption, the computing power of CPU has also been greatly improved.

With 4K2K decoding capabilities,
it make 4K become the standard.



The color quantity is increase by 60 times more than the previous generation.



10 bit decoding, it could highest support 1.07 billion color,
Compared to the previous generation of 16.7 million colors, it increase by 60 times.

The sound upgrade,
while supporting Dolby Digital Plus and DTS.



3 + 2 core high-frequency GPU,
it make the TV turn into the PlayStation.



The single core CPU frequency increase of 25%, 5-core computing speed can be achieved by the previous generation 8-core, it allowing you to experience smooth gaming.

Support 802.11ac WiFi protocol.

200 Mbps
实际速率

120 Mbps
上一代实际速率



Wireless projection the image&video
of the phone/computer onto the TV.



Miracast



Airplay



DLNA



SMB
共享协议



Intel@WIDI

Equipped with smart contiguous
memory allocation technology,
make the system running more smoothly.





Unforgettable visual
experience.

1920 * 1080 HD



Support 3D



1080P



Ultra Wide Vision

It's all about speeding up.



1G DDR3 dual channel memory and 8GB eMMC high speed flash memory.

The dual channel memory runs 1080p HD videos and large games flawlessly,
while the eMMC high speed flash memory controls apps, games, and multi-media storage with ease.

Everything comes alive with 3D.



Experience home entertainment in 3D!



S905

One of industry's first multimedia SoCs with 64-bit architecture, S905 is designed to deliver immersive theatre-level home entertainment to the users with excellent audio and video processing capabilities. It also supports operator-level security and is a perfect choice for OTT/IPTV/DVB STB, TV dongle and smart home applications.



Certificates



A member of the Shenzhen chamber of Commerce Network

TCT

FCC-VERIFICATION

TCT1306286911F-1

This verification that the following designated product

Android tv box
Model: MX, M3, X6, U6D, MXH, M3T2, M3T, M3S2, M6T2, M6T, M6S2, M6SDB, MK208, MK308B, MK318, MK308, MK318

(Product Identification)

It is herewith confirmed and found to comply with the requirements set up by regulation for the evaluation of electromagnetic compatibility. This device complies with all of the FCC rules; operation is subject to the following two conditions:

- 1) this device may not cause harmful interference and;
- 2) this device must accept any interference received,

including interference that may cause undesired operation.

This declaration is the responsibility of the manufacturer/importer

Shenzhen Tomato Technology Co., Ltd.
 No.801.Xihu Building, 3070 Bao'an South Rd., Luohu Shenzhen
 Guangdong 518001 China.

Identification of regulation: 47 CFR Part 15 Subpart B Class B, Measurement Procedure: ANSI C63.2009. It is only valid in connection with the test report number: **TCT1306286911F2-1.**

TEST LABORATORY

This is the results of test that was carried out from the submitted type samples of a product in conformity with the specification of the respective standards. The certificate holder has the right to fix the FCC-mark for EMI on the product complying with the inspection sample.



Authorized Signer



Tomato Senior Manager

Date: **June 28, 2013**

This verification is only valid for the equipment and configuration described, in conjunction with the test data attached hereby.

Shenzhen TCT Testing Technology Co., Ltd.
 Hotline: 400-6611-142 Tel: 86-755-27673338 Fax: 86-755-27673332 Http://www.tctlab.com

TCT

Certificate of Compliance

CERTIFICATE NO.: TCT1306281930R-1

Product	: Android tv box
Model	: MX, M3, X6, U6D, MXH, M3T2, M3T, M3S2, M6T2, M6T, M6S2, M6SDB, MK308, MK308B, MK318, MK308, MK318
Trademark	: N/A
Applicant	: Shenzhen Tomato Technology Co., Ltd.
Applicant Address	: No.801.Xihu Building,3070 Bao'an South Rd., Luohu Shenzhen Guangdong 518001 China
Manufacturer	: Shenzhen Tomato Technology Co., Ltd.
Manufacturer Address	: No.801.Xihu Building,3070 Bao'an South Rd., Luohu Shenzhen Guangdong 518001 China

This is to certify that, on the basis of the tests undertaken as per Report No. TCT1306281930R-1, the submitted sample of the above item complies with:

EPA 3060B:1996, EN1122:2001,
 EPA 3052:1996, EPA 3060A,
 EPA 7196, EPA 3540C, EPA 8270C

And fulfills testing requirement of the RoHS directive 2011/65/EU

RoHS



Tomato, Chief Engineer

Date of issue: **June 28, 2013**

Shenzhen TCT Testing Technology Co., Ltd.
 Hotline: 400-6611-142 Tel: 86-755-27673338 Fax: 86-755-27673332 Http://www.tctlab.com

TCT

Certificate of Compliance

Certificate No. : TCT1306287675E-1

Applicant : Shenzhen Tomato Technology Co., Ltd.

Applicant Address : No.801.Xihu Building, 3070 Bao'an South Rd., Luohu Shenzhen Guangdong 518001 China.

Manufacturer : Shenzhen Tomato Technology Co., Ltd.

Manufacturer Address : No.801.Xihu Building, 3070 Bao'an South Rd., Luohu Shenzhen Guangdong 518001 China.

Product : Android tv box

Model : MX, M3, X6, U6D, MXH, M3T2, M3T, M3S2, M6T2, M6T, M6S2, M6SDB, MK308, MK308B, MK318, MK308, MK318

Trademark : N/A

The above products have been tested by us with listed standards and found in compliance with the council EMC 2004/108/EC. It is possible to use CE marking to demonstrate the compliance with this EMC.

Test standards:	Report Number	Issued By	Issued Date
EN 55022:2005 EN 55024:2010 EN 61000-3-2:2006+A2:2009 EN 61000-3-3:2008	TCT1306287675E-1	TCT	June 28, 2013

This certificate of conformity is not transferable and based on an evaluation of a sample of the above mentioned product.



Authorized Signer:



Tomato Senior Manager

Date: **June 28, 2013**

Shenzhen TCT Testing Technology Co., Ltd.
 Hotline: 400-6611-142 Tel: 86-755-27673338 Fax: 86-755-27673332 Http://www.tctlab.com