

**Amlogic S905X3 DIY OTT Buildroot Android OpenELEC Ubuntu KODI
Dual Boot TV Box Support GPIO**

Specifications

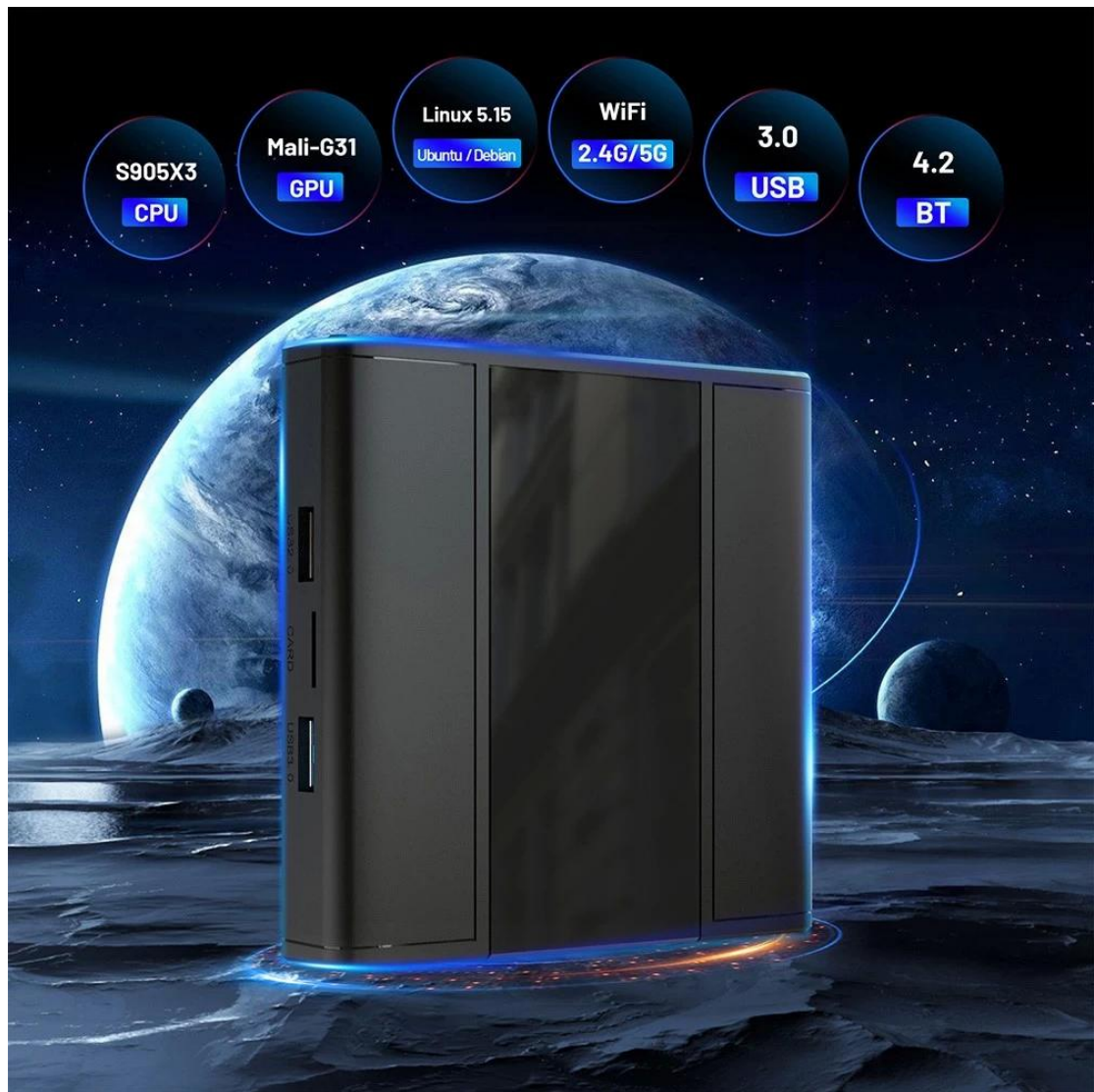
Model No.	Ubuntu TV Box
CPU	Amlogic S905X3 64-bit Quad Core ARM® Cortex™ A55 CPU
GPU	G31™ MP2 GPU processor
RAM	DDR3: 2GB/4GB
ROM	eMMC: 32GB(Optional: 16GB/64GB)
OS	Ubuntu20.04(Linux5.15)
WiFi	IEEE 802.11 a/b/g/n/ac; 2.4G / 5G
Bluetooth	BT4.2
Desktop	lubuntu /xubuntu / lxde / xfce4
Apps & Services	You can install applications or services by apt or dpkg.
Default Language	English

I/O Port

HDMI	1*HDMI 2.1
USB	1* USB 3.0 2* USB 2.0
AV Out	only Android
IR Reciver	Remote Reciver Connect [Optional]
RTC	[Optional]
LED Display	Time & Icons
RJ45	Ethernet Interface; Support 10/100/1000M
TF card slot	Support 4GB/8GB/16GB/32GB/64GB

Power

Power Supply	DC 5V/2A
--------------	----------



Amlogic S905X3 Advanced application processor
designed for high end media player



64-bit quad core
Cortex™ A55

G31™ MP2



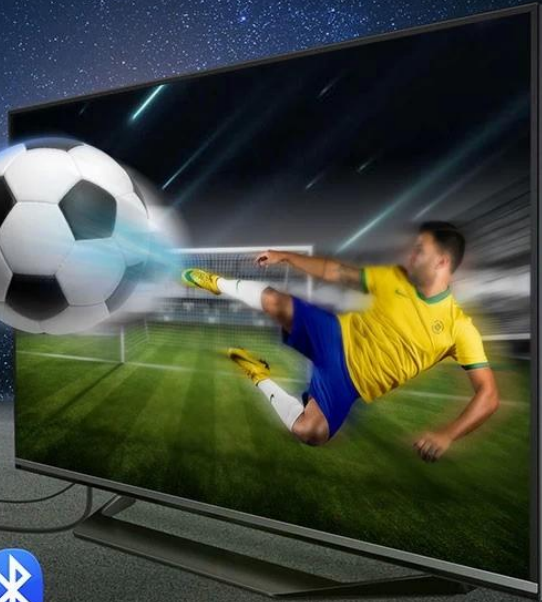
Equipped with dual band 2.4G&5G&802.11 a/b/g/n/ac and Bluetooth 4.2, the transmission speed is much faster!



2.4G&5G
802.11 a/b/g/n/ac



4.2



Multiple USB interfaces available to connect multiple devices.
Super Speed USB3.0 interface speed up to 5Gbps

USB
2.0

30MB/S

USB
3.0

320MB/S



Dual Band Wireless

Run Box without Buffering Strong Signal



2.4G 5G

2.4GHz



5GHz



The Linux system with powerful network function to support different Ethernet protocols, an open source system composed of many micro core

Linux

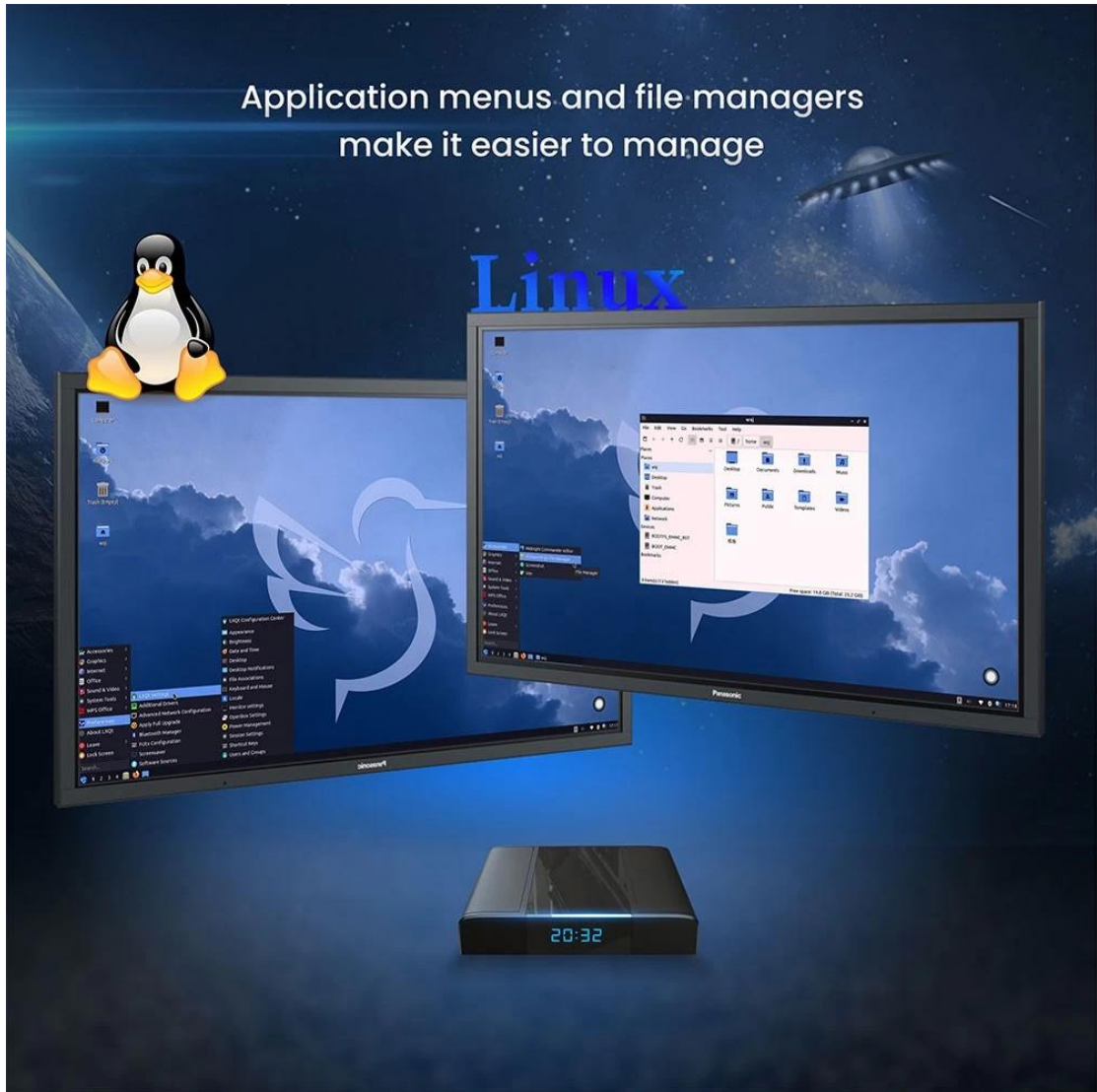


The Linux system is pre-installed with applications such as browsers, screenshot software, etc., providing convenient Internet experience, and retaining every wonderful moment

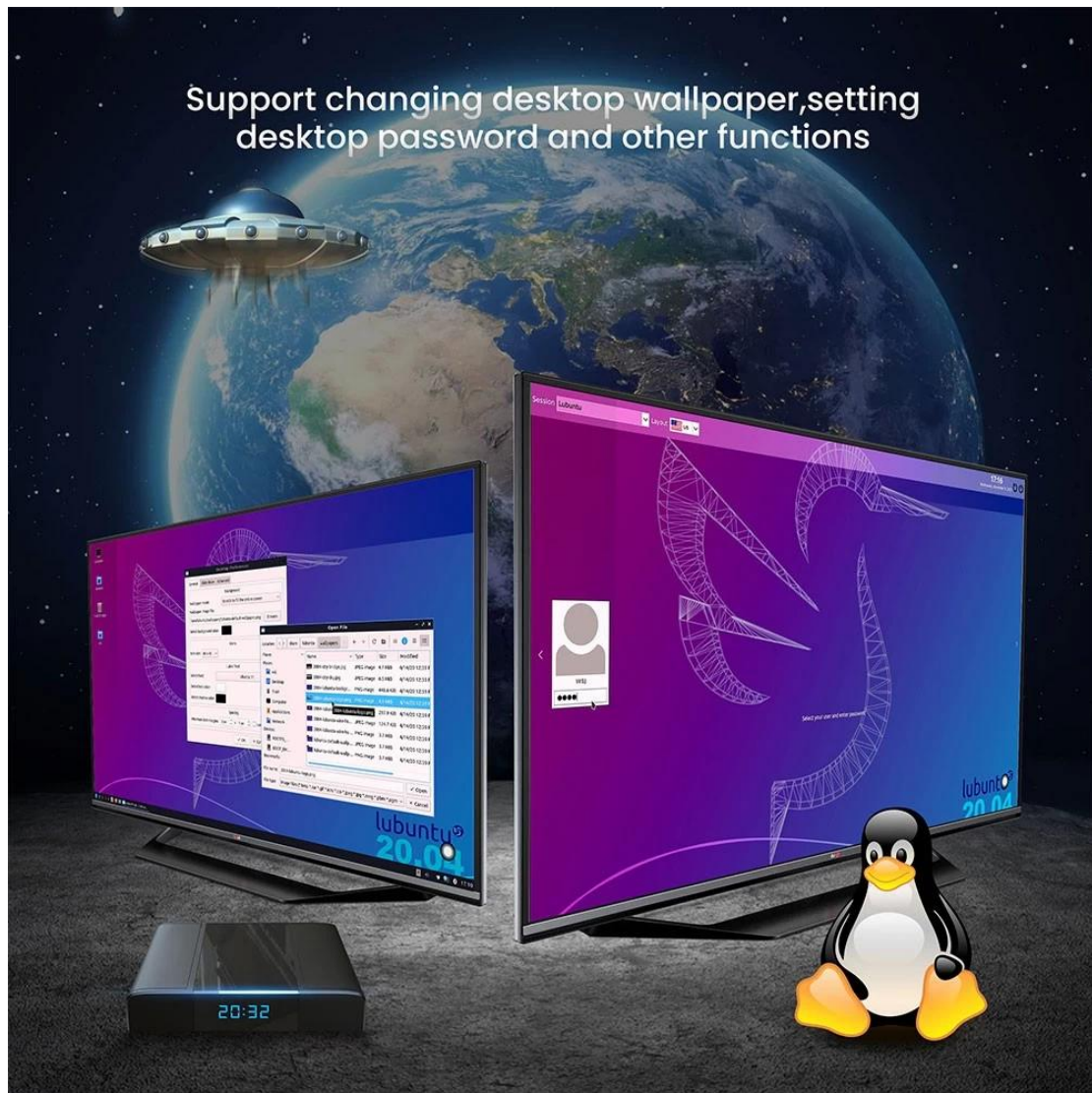


Application menus and file managers
make it easier to manage

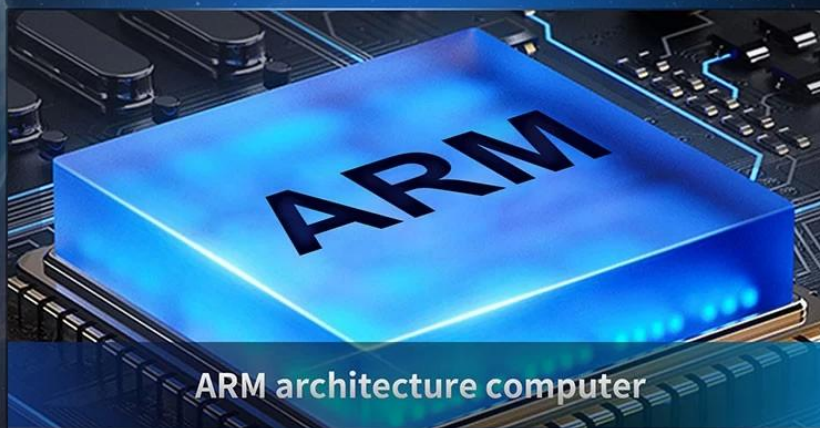
Linux



Support changing desktop wallpaper, setting
desktop password and other functions



What can do?





Package Contents



Power Adapter*1



HDMI Cable*1

Our Amlogic S905X3 DIY TV Box redefines versatility and customization in home entertainment. Explore the features and benefits that make this device a must-have for DIY enthusiasts, tech-savvy users, and entertainment aficionados alike.

Dual Boot Capability Experience the flexibility of dual-boot capability with our Amlogic S905X3 TV Box. Switch seamlessly between operating systems like OpenELEC, Ubuntu, and KODI to suit your preferences and needs.

GPIO Support Take customization to the next level with GPIO support on our TV Box. Connect external devices, sensors, and accessories to enhance functionality and create a personalized entertainment setup.

OpenELEC, Ubuntu, and KODI Compatibility Enjoy compatibility with popular operating systems like OpenELEC, Ubuntu, and KODI on our TV Box. Access a wide range of apps, media libraries, and customization options for an immersive entertainment experience.

Powerful Amlogic S905X3 Processor Experience smooth performance and fast multitasking with the powerful Amlogic S905X3 processor. Enjoy seamless

streaming, gaming, and app access for an enhanced viewing experience.

High-Quality Video and Audio Immerse yourself in high-quality video and audio with support for 4K Ultra HD resolution, HDR technology, Dolby Audio, and more. Enjoy stunning visuals and immersive sound for a cinematic viewing experience.

Versatile Connectivity Options Connect seamlessly to your TV, sound system, and other devices with versatile connectivity options, including HDMI, USB, Ethernet, Wi-Fi, and Bluetooth. Stream content wirelessly, connect external storage devices, and enjoy flexible setup options for your home entertainment system.

User-Friendly Interface Navigate through content effortlessly with the user-friendly interface of our TV Box. Whether using the included remote control or mobile app, enjoy intuitive navigation, easy access to features, and personalized settings for a customized viewing experience.

Reliability and Quality Assurance We prioritize reliability, performance, and customer satisfaction in every product we offer. Our Amlogic S905X3 DIY TV Box undergoes rigorous testing to ensure durability, functionality, and compatibility with a wide range of devices and setups.

In conclusion, our Amlogic S905X3 DIY [TV Box](#) offers dual-boot capability, GPIO support, OpenELEC, Ubuntu, and KODI compatibility, powerful performance, high-quality video and audio, versatile connectivity options, a user-friendly interface, and reliability for an unmatched entertainment experience. Customize your entertainment setup today with our versatile TV Box.