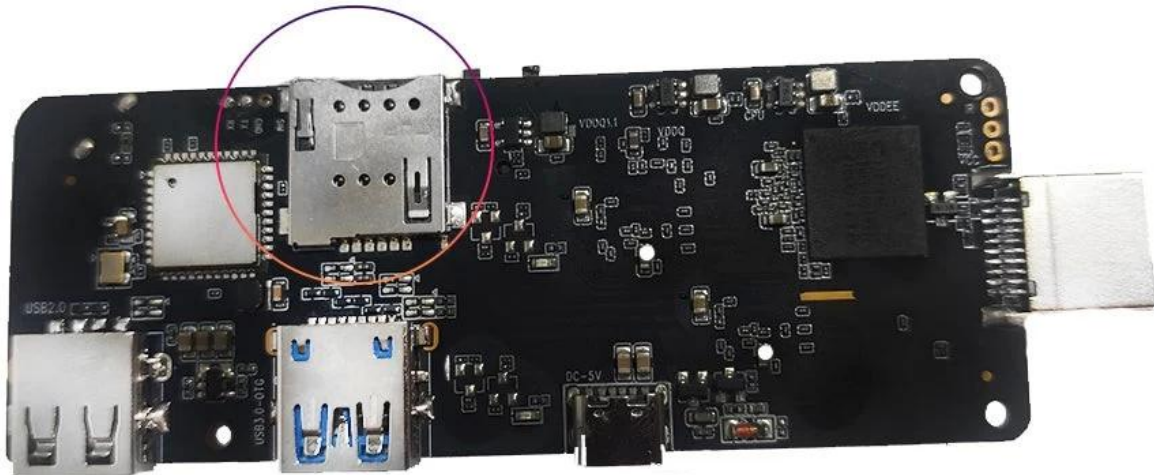


Discover Versatility with Android Mini PC Solutions

Specifications	
Model No.	Android Mini PC
CPU	Amlogic S905X3 Quad-Core ARM Cortex-A55 up to 2.0GHz
GPU	ARM Mali-G31
Storage	16GB/32GB EMMC
Memory	2GB/4GB DDR4
Android OS	Android 9.0/ATV
Bluetooth	4.1 Bluebooth
DRM	Widevine (Verimatrix/ Playready optional)
4G LTE Module(optional)	
Internal 4G LTE Module(optional)	LTE-FDD/LTE-TDD/WCDMA/TD-SCDMA/EDGE/GPRS/GSM, downstream 150Mbps, upstream 50Mbps
MHZ-E (EUROPE)	B1/B3/B5/B7/B8/B20@FDD LTE, B1/B5/B8@WCDMA, 850/900/1800/1900@GSM
MHZ-A (AMERICA)	B2/B4/B8/B17@FDD LTE, B38/B39/B40/B41@TDD LTE, B1/B8@WCDMA, B34/39@TD-SCDMA,900/1800@GSM
MHZ-CE (CHINA/INDIA/Saudi Arabia)	B1/B3/B5/B8@FDD LTE, B38/B39/B40/B41@TDD LTE, B1/B8@WCDMA, B34/B39@TD-SCDMA, BC0@CDMA2000 1X/EXDO, 900/1800@GSM
MHZ-E(EMEA/KOREA/THAILAND/INDIA)	B1/B3/B5/B7/B8/B20@FDD LTE;B38/B40/B41@TDD LTE; B1/B5/B8@WCDMA; B3/B8@GSM
MHZ-V(NORTH AMERICA)	B4/B13@FDD LTE
MHZ-A(NORTH AMERICA)	B2/B4/B12@FDD LTE; B2/B4/B5@WCDMA
MHZ-AU(Latin America/ANZ/TAIWAN)	B1/B2/B3/B4/B5/B6/B7/B8/B28@FDD LTE; B40@TDD LTE; B1/B2/B5/B8@WCDMA; B2/B3/B5/B8@GSM
MHZ-J(JAPAN)	B1/B3/B8/B18/B19/B26@FDD LTE; B41@TDD LTE; B1/B6/B8/B19@WCDMA
Video & Audio CODEC	
Video& Audio	VP9/H.265/AVS2 up to 4Kx2K@60fps,H.264 4K @30fps, AVS+/VC-1/MPEG1-4 1080P @60fps H.264/H.265 1080P @60fps HD MPEG1/2/4,H.265/HEVC,AVS2 , HD AVC/VC-1, RM/RMVB, Xvid/DivX3/4/5/6 , RealVideo8/9/10 Avi/Rm/Rmvb/Ts/Vob/Mkv/Mov/ISO/wmv/asf/flv/dat/mpg/mpeg MP3/WMA/AAC/WAV/OGG/DDP/TrueHD/HD/FLAC/APE HD JPEG/BMP/GIF/PNG/TIFF
HDR	HDR 10+, Dolby Vision
I/O	
HDMI	HDMI 2.1 With 3D,HDR,CEC and 4Kx2K@60fps max resolution
AV OUT	Support
USB	1*USB 2.0, 1*USB 3.0 support USB Flash Drive and USB HDD)
RJ45	10/100M standard RJ-45 Ethernet
Network Function	Miracast,DLNA,Airplay,Skype,Netflix,Twitter,Picasa,Youtube,Flicker,Facebook,Online movies,Games,etc.
Wireless	WiFi 11ac+Bluetooth 4.1 IEEE802.11 a/b/g/n/ac(AP6255) 4G/5G
TF CARD	Support
SPDIF	Support Optical Output
IR Port	External Infrared Receiver
LED Indicator	Power on: Blue; Standby: Red
LED Display time	1* LED Display time, Built in RTC ,Built in USB device
Others	
Power Supply	AC100-240V 50/60Hz, DC 5V/2A
Language	English, German, Russian, French, Spanish, Italian, Arabic, Japanese, Korean, Hebrew, etc. multi languages
Application	KODI newest version Support local high-definition play, support plug-in installation and play
Accessory	User manual, HDMI cable, IR remote, Power adadpter
Option	Support mouse and keyboard via USB or BT; Support 2.4GHz wireless mouse and keyboard via 2.4GHz USB dongle

SIM card slot



The 4G LTE SIM Card [Android Mini PC](#) is a revolutionary device that combines the power of a 4G LTE SIM card with the convenience of an Android Mini PC. With this device, you can turn any television into a smart TV and enjoy a wide range of entertainment options.

The Android Mini PC is powered by a quad-core processor, ensuring smooth and fast performance. It comes with 2GB of RAM and 16GB of internal storage, providing ample space for all your favorite apps, games, and media files. The device also supports expandable storage, allowing you to add a microSD card for additional storage capacity.

One of the standout features of this Android Mini PC is its support for 4G LTE connectivity. With a compatible SIM card, you can enjoy high-speed internet access wherever you go. This means you can stream your favorite movies and TV shows, play online games, and browse the web without any lag or buffering issues. The 4G LTE connectivity also ensures a stable and reliable connection, even in areas with weak Wi-Fi signals.

Setting up the 4G LTE SIM Card Android Mini PC is incredibly easy. Simply connect the device to your television using the HDMI port, insert a compatible SIM card, and power it on. The device will automatically detect your SIM card and establish a connection to the internet. Once connected, you can access the Google Play Store and download all your favorite apps, such as Netflix, YouTube, Spotify, and more.

The Android Mini PC also supports Bluetooth connectivity, allowing you to connect wireless peripherals such as keyboards, mice, and game controllers. This makes it easy to navigate through apps and games, enhancing your overall user experience.

In terms of audio and video quality, the 4G LTE SIM Card Android Mini PC does not disappoint. It supports 4K Ultra HD resolution, delivering stunning visuals with vibrant colors and sharp details. The device also supports Dolby Atmos and DTS audio, providing immersive and high-quality sound.

The Android Mini PC comes with a user-friendly interface that is easy to navigate, even for those who are not tech-savvy. The device supports voice control, allowing you to search for content, adjust settings, and launch apps using simple voice commands. This feature adds convenience and makes the device accessible to a wide range of users.

In conclusion, the 4G LTE SIM Card Android Mini PC is a versatile and powerful device that brings the best of both worlds - the convenience of an Android Mini PC and the high-speed internet access of a 4G LTE SIM card. With its powerful hardware, seamless connectivity, and user-friendly interface, this device is perfect for anyone looking to upgrade their television to a smart TV. Whether you want to stream movies, play games, or browse the web, the 4G LTE SIM Card Android Mini PC has got you covered.

Unlock limitless possibilities with our [Android Mini PC](#). This compact and powerful device redefines computing, offering a versatile solution for work and play. Whether you're a professional seeking productivity or an enthusiast exploring new horizons, the Android Mini PC delivers exceptional performance.