

# Quad Core TV Box Amlogic S812 Dual Band Wifi Android TV Box TM8S



## Hardware Specifications

|           |   |
|-----------|---|
| Model No. | TM8S                                      |
| CPU       | Amlogic S812 Quad Core Cortex-A9r4 2.0GHz |
| GPU       | Octo-Core Mali™ -450MP GPU                |
| FLASH     | 8GB NAND FLASH                            |

## Power Supply Specifications

|                       |                              |
|-----------------------|------------------------------|
| Power Supply          | DC 5V/2A                     |
| Power Indicator (LED) | Power ON :blue; Standby :Red |

## Main Features

|                              |   |
|------------------------------|---|
| OS                           | Google Android™ 4.4 KitKat  |
| 3D                           | 3D-HD 1080Px2   |
| Bluetooth™                   | Support Bluetooth™ 4.0  |
| Support Decoder Format       | HD MPEG1/2/4,H.264/ <b>H.265</b> , HD AVC/VC-1,RM/RMVB,Xvid/DivX3/4/5/6 ,RealVideo8/9/10            |
| Support Media Format         | Avi/Rm/Rmrvb/Ts/Vob/Mkv/Mov/ISO/Wmv/Asf/Flv/Dat/Mpg/Mpeg  |
| Support Music Format         | MP3/WMA/AAC/WAV/OGG/AC3/DDP/TrueHD/DTS/DTS/HD/FLAC/APE  |
| Support Photo Format         | HD JPEG/BMP/GIF/PNG/TIFF  |
| USB Host                     | 2 High Speed USB 2.0,Support U DISK And USB HDD   |
| Card Reader                  | SD/SDHC/MMC Cards   |
| HDD File System              | FAT16/FAT32/NTFS  |
| Support Subtitle             | SRT/SMI/SUB/SSA/IDX+USB   |
| High Difinition Video Output | Support All Standard SD/HD/4K2K Ultra HD Decoding And Output  |
| OSD type of languages        | English/French/German/Spanish/Italian etc Multilateral Languages                                    |
| LAN                          | Ethernet:10/100M, Standard RJ-45  |
| Wireless                     | Support Dual Band Wi-Fi™ (2.4GHz/5GHz) (AP6330)   |
| Mouse/Keyboard               | Support Mouse And Keyboard Via USB;Support 2.4GHz Vireless Mouse And Keyboard Via 2.4GHz USB Dongle |
| HDMI™                        | HDMI™ 1.4B  |
| AV                           | Support   |
| Optical                      | Support   |
| 3G                           | Support   |

SPDIF/IEC958

Optical

IPTV And OTT

Support Many Kinds of IPTV And OTT Programmes

### **Software Specifications**

Network Function

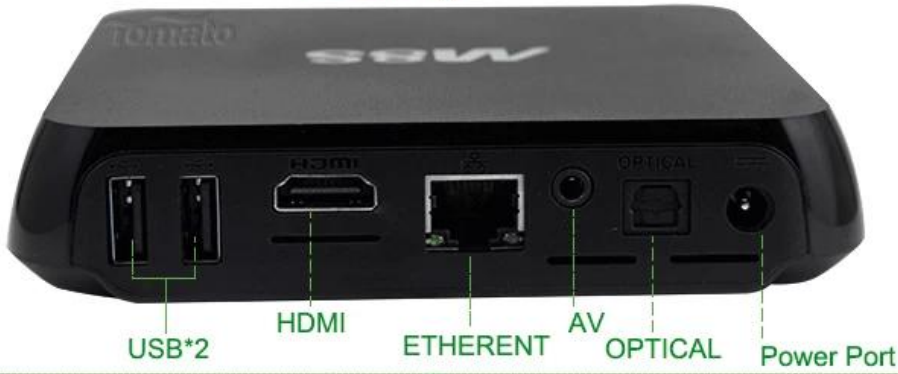
Miracast,XBMC,Airplay,Skype Chatting,Picasa,Youtube,Flicker,Facebook,Online Movies,etc

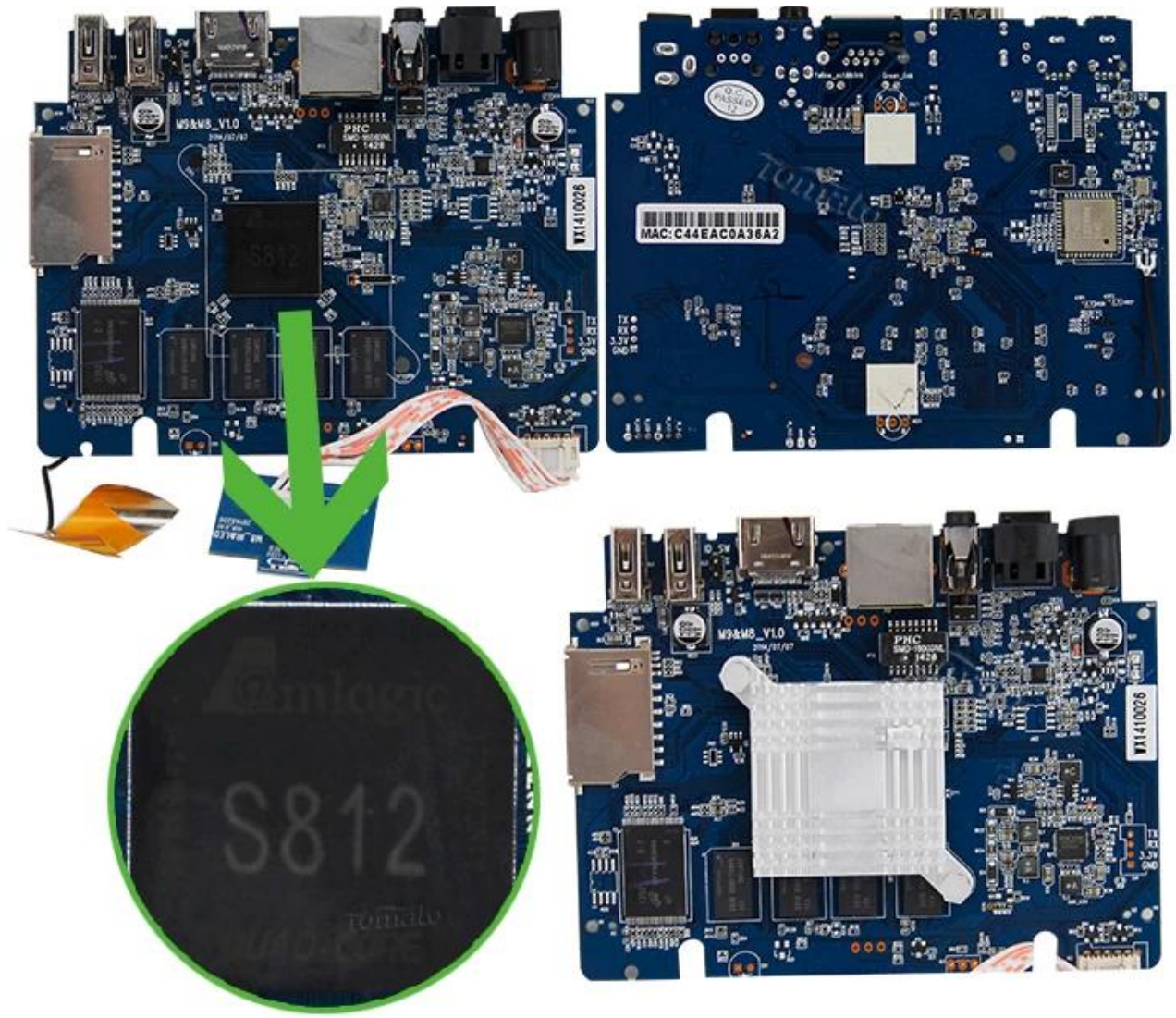
Other Feature

Free Internet Searching,Thousands of Android Applications,Many Kinds of Games,etc



# Picture Show









06:18 Friday, Nov 7

Online Video    My recommend    Settings

My Apps    Music    Local

4K    Home    Play Store    App Drawer    Plus    Mouse

### SETTINGS

Network    Display    Advanced    Other

Model number :  
M8S

Android version :  
4.4.2

Build number :  
KOT49H.20141103 test-keys

Kernel version :  
3.10.33  
shaoshuai.cen@wyst #2  
Mon Nov 3 11:40:41 CST 2014

System Update

More Settings

### SETTINGS

Network    Display    Advanced    Other

Miracast   

Remote Control     OFF

Google TV Remote     OFF

CEC Control   

#### Output Modes

- 4k2k-25hz
- 4k2k-30hz
- 4k2k-smpte

PCM



Confluence

Summary information

Summary Free memory: 937MB  
 IP address: 192.168.1.195

Storage Screen resolution: 1920x1080@60.00Hz - Full screen (30.51 fps)

Network Operating system: Linux 3.10.33 #2 SMP PREEMPT Mon Nov 3 11:40:41 CST 201...  
 System uptime: 0 Minutes

Video Total uptime: 0 Minutes

Hardware Battery level: 100%

PVR service

XBMC 13.2 Git:20140821-c5ae8b3 (Compiled: Sep 23 2014)

CPU Usage: CPU0: 28.6% CPU3: 31.2%

CPU-Z SOC SYSTEM BATTERY SENSORS

**Cortex** ARM Cortex-A9  
 Intelligent Processors by ARM<sup>®</sup>  
 1.99 GHz

|                  |                   |
|------------------|-------------------|
| CPU Architecture | ARM Cortex-A9     |
| Cores            | 4                 |
| Revision         | r4p1              |
| Clock Speed      | 24 MHz - 1.99 GHz |
| Core 0           | 648 MHz           |
| Core 1           | stopped           |
| Core 2           | stopped           |
| Core 3           | 984 MHz           |
| CPU Load         | 33 %              |
| GPU Vendor       | ARM               |
| GPU Renderer     | Mali-450 MP       |

CPU-Z SOC SYSTEM BATTERY SENSORS ABOUT

|                     |                           |
|---------------------|---------------------------|
| Model               | M8S (n200)                |
| Manufacturer        | MBX                       |
| Board               | n200                      |
| Display             | KOT49H.20141103 test-keys |
| Hardware            | amlogic                   |
| Android Version     | 4.4.2                     |
| Kernel Architecture | armv7l                    |
| Kernel Version      | 3.10.33 (20141103)        |
| Screen Resolution   | 1920 x 1008               |
| Screen Density      | 240 dpi                   |
| Total RAM           | 1606 MB                   |
| Available RAM       | 984 MB (61%)              |
| Internal Storage    | 5.33 GB                   |
| Available Storage   | 4.99 GB (93%)             |
| Root Access         | Yes                       |

# Root Checker

Device: M8S

Android: 4.4.2 | API: 19

**Check Now**

Status: Rooted  
Id: uid=0(root) gid=0(root)  
Superuser: Not found  
Busybox: /system/xbin/busybox  
Su Location: /system/xbin/su  
Sudo Location: Not found

Environment Vars.:  
/sbin/  
/vendor/bin/  
/system/sbin/  
/system/bin/  
/system/xbin/



# Wifi Analyzer

VIEW SETTINGS

## Tomato (50:bd:5f:2e:9b:d4)



WPA2

## ChinaNet-iabK (34:cd:be:8a:7c:34)

Connected to:  
**Tomato**  
50:bd:5f:2e:9b:d4

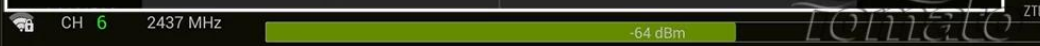
IP address: 192.168.1.195  
Gateway: 192.168.1.1  
Netmask: 255.255.255.0  
DNS1: 202.96.128.86  
DNS2: 202.96.134.33  
Server IP: 192.168.1.1

|               |                                       |
|---------------|---------------------------------------|
| Tomato        | Connected                             |
| ChinaNet-iabK | Secured with WPA/WPA2 (WPS available) |
| HiWiFi_012    | Secured with WPA/WPA2                 |
| ChinaNet-b    | Secured with WPA/WPA2                 |
| ChinaNet-c    | Secured with WPA/WPA2                 |
| 82583300      | Secured with WPA/WPA2                 |

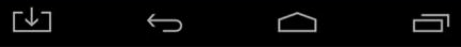
**Tomato**

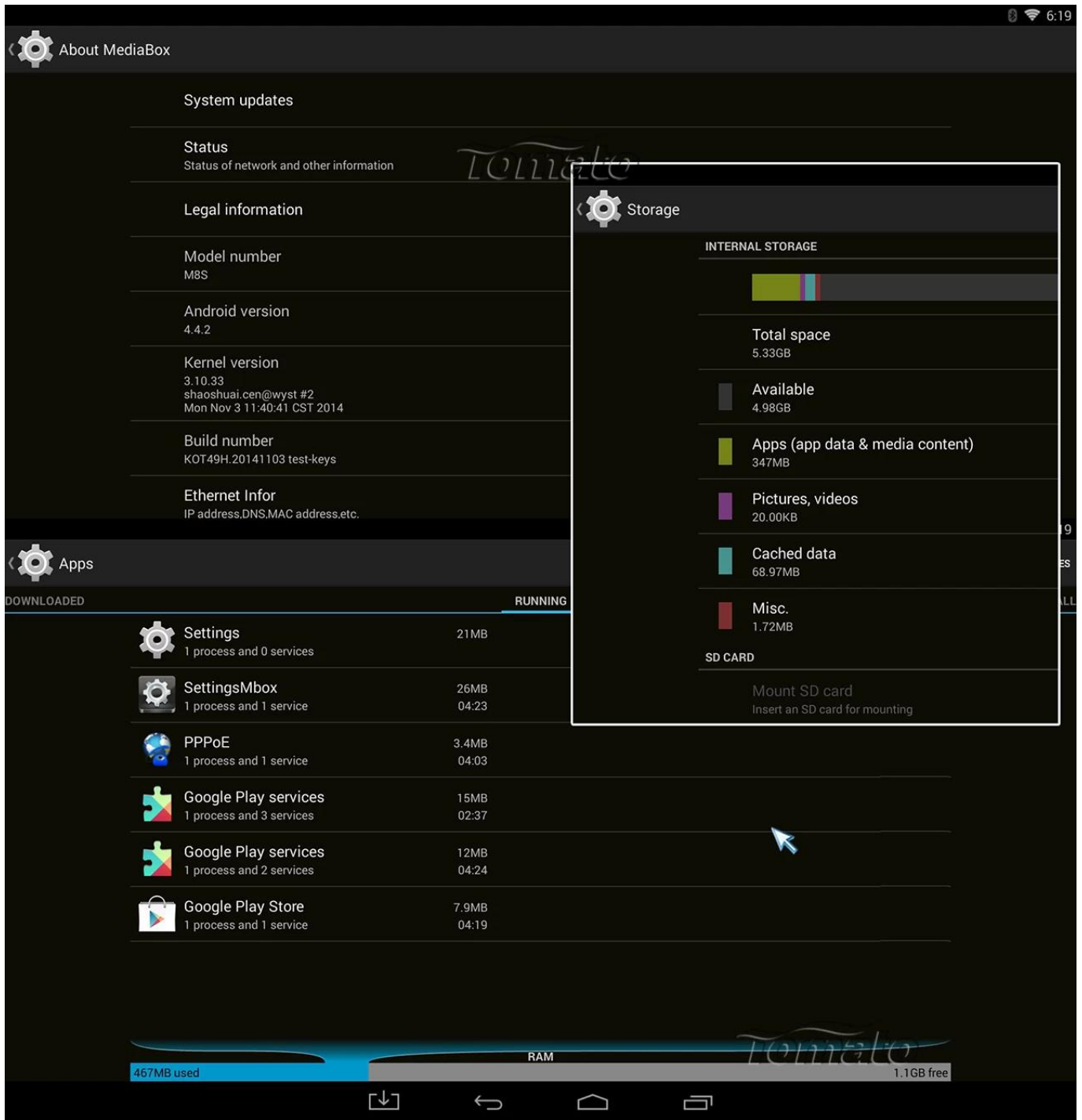
|                 |               |
|-----------------|---------------|
| Status          | Connected     |
| Signal strength | Excellent     |
| Link speed      | 65Mbps        |
| Security        | WPA/WPA2 PSK  |
| IP address      | 192.168.1.195 |

Cancel Forget



WPA





Experience the next level of entertainment with the TM8S Quad Core Amlogic S812 Dual Band Wifi Android TV Box. Featuring a powerful Quad Core processor, this device delivers smooth performance for streaming, gaming, and multitasking. The dual-band Wi-Fi support ensures faster and more stable internet connectivity, allowing you to enjoy seamless streaming and browsing.

Running on Android TV, the TM8S offers a user-friendly interface with access to a vast library of apps, games, and streaming services. Connect the TM8S to your TV effortlessly via HDMI and enjoy high-definition viewing. The sleek and compact design of the TM8S Quad Core Amlogic S812 Dual Band Wifi Android TV Box complements any home entertainment setup, making it a perfect choice for enhancing your TV viewing experience.