

Amlogic S905 Android TV Box 4K2K Ultra HD Mali-450 Fino a 750 Mhz Android 5.1 Lollipop Quad Core Lettore multimediale completo G9C

Specifiche hardware	
Modello numero:	G9C
processore	Amlogic S905 Quad Core ARM Cortex™ -A53 CPU fino a 2,0 GHz (DVFS)
GPU	Penta-Core Mali-450 Fino a 750 MHz +
VELOCE	EMMC da 8 GB
SDRAM	DDR3 da 1 GB
Specifiche di alimentazione	
Alimentazione elettrica	DC 5V / 2A
Indicatore di alimentazione (LED)	Energia SOPRA:blu; Standby: Rosso
Caratteristiche principali	
OS	Android™ 5.1 Lollipop
3D	3D-HD 1080Px2
Supporta il formato del decodificatore	HD MPEG1 / 2/4, H.264/H.265, HD AVC / VC-1, RM / RMVB, Xvid / DivX3 / 4/5/6, RealVideo8 / 9/10, HEVC MP-10
Supporta il formato multimediale	Avi / RM / RMVB / Ts / VOB / Mkv / Mov / ISO / WMV / ASF / FLV / Dat / MPG / MPEG /MP4
Supporta il formato musicale	MP3 / WMA / AAC / WAV / OGG / AC3 / DDP / TrueHD / DTS / DTS / HD / FLAC / APE
Supporta il formato foto	HD JPEG / BMP / GIF / PNG / TIFF
Host USB	3 USB 2.0 ad alta velocità, supporto U DISK e USB HDD
Lettore di schede	SD™ / Schede SDHC / MMC
File system HDD	FAT16 / FAT32 / NTFS
Supporto sottotitoli	SRT / SMI / SUB / SSA / IDX + USB
Alta differenza Uscita video	Supporta tutti gli standard di decodifica e output SD / HD / 4K2K Ultra HD
Tipo di lingue OSD	Lingue multilaterali inglese / francese / tedesco / spagnolo / italiano ecc
LAN	Ethernet: 1000 M, standard RJ-45 (IEEE 802.3 opzionale 10/100/1000 Gigabit)
senza fili	Supporto IEEE802.11 b / g / n Bluetooth™ 4.1EDR
Mouse / Tastiera	Supporta mouse e tastiera tramite USB; supporta mouse e tastiera wireless a 2,4 GHz tramite dongle USB a 2,4 GHz
HDMI™	HDMI™ 2.0 (CEC e HDCP 2.2), 4K * 2K @ 60 fps
AV	Supporto
Ottico	Supporto
3G	Supporto
SPDIF / IEC958	Ottico
IPTV E OTT	Supporta molti tipi di programmi IPTV e OTT
Specifiche del software	
Funzione di rete	Miracast, Kodi, Airplay, chat di Skype, Picasa, Youtube, sfarfallio, Facebook, film online, ecc
Altra caratteristica	Ricerca su Internet gratuita, migliaia di applicazioni Android, molti tipi di giochi, ecc

Caratteristiche:

Amlogic S905 Android TV Box Supporta l'alta velocità del Wi-Fi per le applicazioni di rete, supporta mouse wireless a 2,4 GHz, tastiera e telecomando aereo, codifica video HD1080p completa, funzionalità avanzate come PPPOE, DLNA e Miracast, disco rigido USB.

Cosa c'è nella scatola?

- 1 * Box TV Android Amlogic S905
- 1 * Cavo HDMI
- 1 * telecomando
- 1 * adattatore di alimentazione
- 1 * Manuale dell'utente



Picture Show



Indicator Light Port





Micro SD Card

USB

USB



AV Port

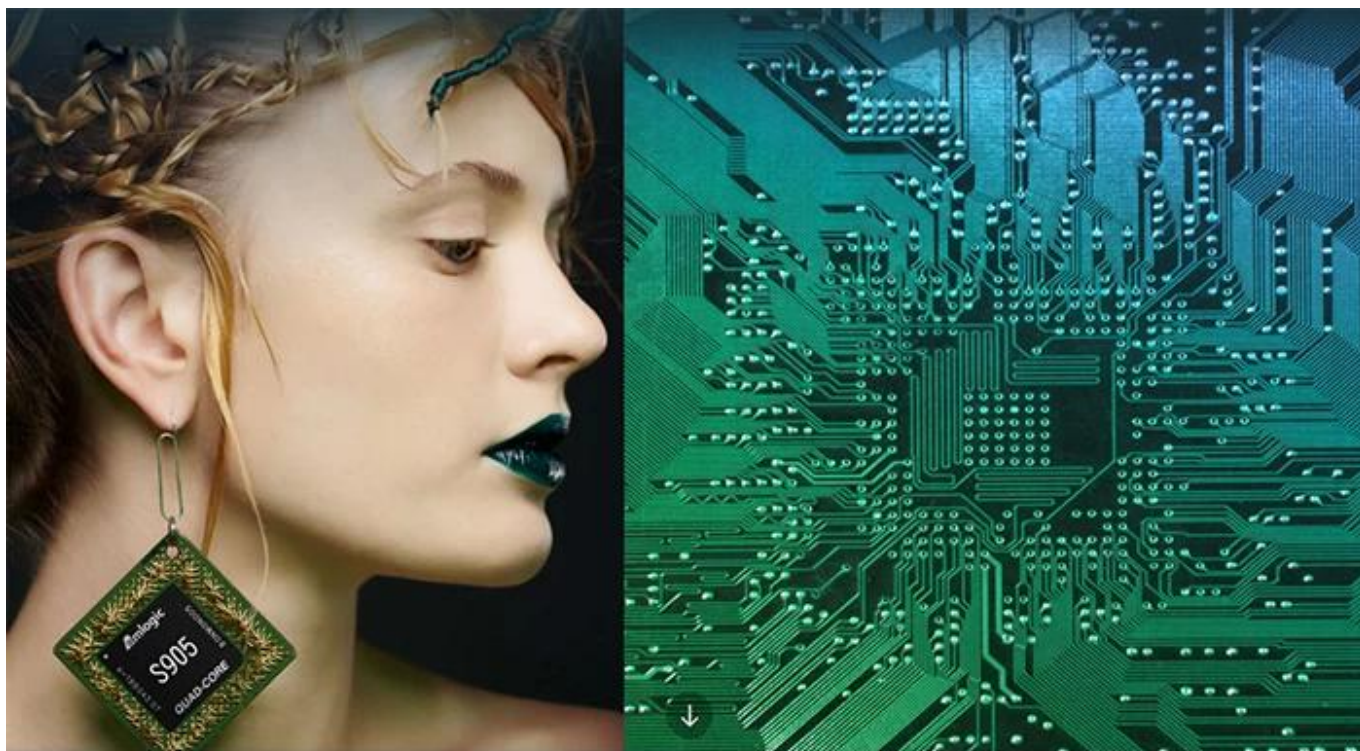
RJ 45 ETHERNET

HDMI™

Optical Port

Power Port





S905

64-Bit
Quad Core
Cortex A53

4K

H.265
@60fps

HDMI 2.0
HDCP 2.2

TSMC
28NM

DRM



64 bit CPU,

While maintaining the same power consumption, the computing power of CPU has also been greatly improved.

With 4K2K decoding capabilities,
it make 4K become the standard.



The color quantity is increase by 60 times more than the previous generation.



10 bit decoding, it could highest support 1.07 billion color,
Compared to the previous generation of 16.7 million colors, it increase by 60 times.

The sound upgrade,
while supporting Dolby Digital Plus and DTS.



3 + 2 core high-frequency GPU,
it make the TV turn into the PlayStation.



The single core CPU frequency increase of 25%, 5-core computing speed can be achieved by the previous generation 8-core, it allowing you to experience smooth gaming.

Support 802.11ac WiFi protocol.

200 Mbps
实际速率

120 Mbps
上一代实际速率



Wireless projection the image&video
of the phone/computer onto the TV.



Miracast



Airplay



DLNA



SMB
共享协议



Intel@WIDI

Equipped with smart contiguous
memory allocation technology,
make the system running more smoothly.





Unforgettable visual
experience.

1920 * 1080 HD



Support 3D



1080P



Ultra Wide Vision

It's all about speeding up.



1G DDR3 dual channel memory and 8GB eMMC high speed flash memory.

The dual channel memory runs 1080p HD videos and large games flawlessly,
while the eMMC high speed flash memory controls apps, games, and multi-media storage with ease.

Everything comes alive with 3D.



Experience home entertainment in 3D!



S905

One of industry's first multimedia SoCs with 64-bit architecture, S905 is designed to deliver immersive theatre-level home entertainment to the users with excellent audio and video processing capabilities. It also supports operator-level security and is a perfect choice for OTT/IPTV/DVB STB, TV dongle and smart home applications.