

Quad Core TV Box Amlogic S805 H265 decodifica lettore multimediale MXQ2



Specifiche dell'hardware

Modello numero:	MXQ2
processore	Amlogic S805 Quad Core Cortex-A5@1.5GHz
GPU	Quad Core Mali™ -450@600 MHz
VELOCE	FLASH NAND DA 8 GB
SDRAM	DDR3 da 1 GB

Specifiche dell'alimentatore

Alimentazione elettrica	CC 5 V/2 A
Indicatore di alimentazione (LED)	Accensione: blu; Standby: rsistema operativo

Caratteristiche principali

OS	Androide™ 4.4
3D	Accelerazione grafica 3D difficile
Supporto al formato decodificatore	HDMPEG1/2/4, H.265 , HD AVC/VC-1, RM/RMVB, Xvid/DivX3/4/5/6, RealVideo8/9/10
Supporta il formato multimediale	Avi/Rm/Rm vb/Ts/Vob/Mkv/Mov/ISO/wmv/asf/flv/dat/mpg/mpeg
Supporta il formato musicale	MP3/WMA/AAC/WAV/OGG/AC3/DDP/TrueHD/DTS/DTS/HD/FLAC/APE
Supporta il formato foto	HD JPEG/BMP/GIF/PNG/TIFF
Ospite USB	2 USB 2.0 ad alta velocità, supporto U DISK e USB HDD
Lettore di schede	Carta TF
File system dell'HDD	FAT16/FAT32/NTFS
Supporta i sottotitoli	SRT/SMI/SUB/SSA/IDX/USB
Uscita video ad alta definizione	SD/HD massimo 1920x1080 pixel
Tipo di linguaggi OSD	Lingue multilaterali inglese/francese/tedesco/spagnolo/italiano/ecc
LAN	Ethernet: 10/100M, RJ-45 standard
senza fili	Wi-Fi incorporato™
Bluetooth™	Supporta Bluetooth™ 4.0
Mouse/tastiera	Supporta mouse e tastiera tramite USB; supporta mouse e tastiera wireless da 2,4 GHz tramite dongle USB da 2,4 GHz
HDMI™	HDMI™ 1.4b Con CEC

AV	Support
3G	Support
SPDIF/IEC958	Coassiale

Specifiche del software

Funzione di rete	XBMC, chat di Skype, Picasa, Youtube, Flickr, Facebook, film online, ecc.
Altra caratteristica	Ricerca Internet gratuita, migliaia di applicazioni Android, molti tipi di giochi, ecc.



Picture Show





- Black color: available now and enough stocks
- Red/Grey/Blue colors: **OEM**



Root Checker

Device: MXQ
Android: 4.4.2 | API: 19

Check Now

Status: Rooted

Id: uid=0(root) gid=0(root)

Superuser: Not found

Busybox: /system/xbin/busybox

Su Location: /system/xbin/su

Sudo Location: Not found

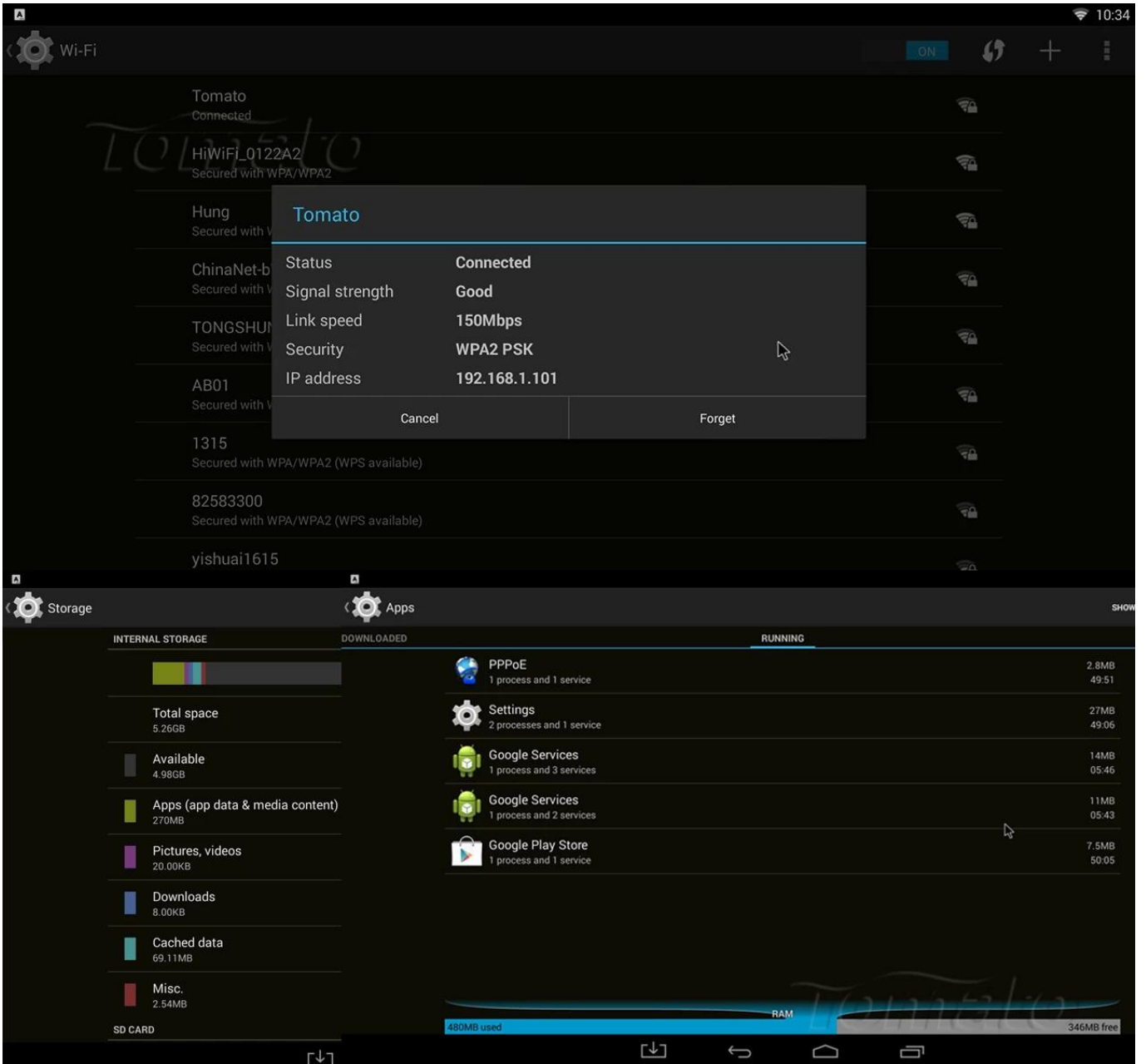
Environment Vars.:
/sbin/
/vendor/bin/
/system/sbin/
/system/bin/
/system/xbin/

CPU-Z CPU-Z SOC SYSTEM BATTERY SENSORS ABOUT CPU-Z SOC SYSTEM BATTERY SENSORS ABOUT

Model	MXQ(MXQ)
Manufacturer	MBX
Board	MXQ
Display	KOT49H.20140903 test-keys
Hardware	amlogic
Android Version	4.4.2
Kernel Architecture	armv7l
Kernel Version	3.10.33 (20140903)
Screen Resolution	1920 x 1008
Screen Density	240 dpi
Total RAM	825 MB
Available RAM	244 MB (29%)
Internal Storage	5.26 GB
Available Storage	4.98 GB (94%)
Root Access	Yes

Cortex ARM Cortex-A5
Intelligent Processors by ARM®
1.49 GHz

CPU Architecture	ARM Cortex-A5
Cores	4
Revision	r0p1
Clock Speed	24 MHz - 1.49 GHz
Core 0	1488 MHz
Core 1	1488 MHz
Core 2	1488 MHz
Core 3	1488 MHz
CPU Load	11 %
GPU Vendor	ARM
GPU Renderer	Mali-450 MP



SETTINGS



Network



Display



Advanced



Other



Miracast

Remote Control

OFF

CEC Control

Location

Shanghai

Shanghai

Application request to change orientation



Keep landscape mode on home screen



Digital audio auto-detection

OFF

Digital Audio Output

PCM



About MediaBox

10:33

System updates

Status

Status of network and other information

Legal information

Model number

hd18q

Android version

4.4.2

Kernel version

3.10.33

tao.jiang@wyst #10

Wed Sep 3 10:13:24 CST 2014

Build number

KOT49H.20140903 test-keys

Ethernet Infor

IP address,DNS,MAC address,etc.