

2015 年 10 月 G9C 智能电视盒子 5.1 Amlogic S905 智能电视盒子

Amlogic S905 Quad Core WiFi Device Smart Box
Watch TV Channels Through Wifi or Internet



产品概述	
产品型号	G9C
CPU	Amlogic S905 四核 Cortex-A53 CPU 1.2 GHz (DVFS)
GPU	四核 Mali-450 750 Mhz +
存储	8 GB EMMC
SDRAM	1 GB DDR3
电源与接口	
电源	DC 5V/2A
红外遥控 (LED)	红外 ON: 红外: 红外
操作系统	
操作系统	Android™ 5.1
3D	3D HD 1080Px2
视频解码	HD MPEG1/2/4, H.264/ H.265, HD AVC/vc-1, RM/RMVB, Xvid/DivX3/4/5/6, RealVideo8/9/10, HEVC MP-10
视频编码	Avi/Rm/Rmvp/Ts/Vob/Mkv/Mov/ISO/Wmv/Asf/Flv/Dat/Mpg/Mpeg /M P 4
音频解码	MP3/WMA/AAC/WAV/OGG/AC3/DDP/Hd/DTS/DTS-HD/FLAC/APE
音频编码	HD JPEG/BMP/GIF/PNG/
USB 接口	2 个 USB 2.0 接口, USB 接口
存储设备	SD™/ SDHC/MMC
文件系统	FAT16/FAT32/NTFS
网络接口	SRT/SMI/IDX + USB
分辨率	SD/HD/4K2K HD 1080P
OSD 菜单	OSD/菜单/菜单/菜单/菜单
LAN	接口: 1000M, RJ-45 (IEEE 802.3 10/100/1000)
无线	IEEE802.11 b/g/n Bluetooth™ 4.1EDR
接口/接口	接口 接口 Usb; 2.4 g h z 接口 接口 接口 2.4 g h z USB
HDMI™	HDMI™ 2.0 (CEC HDCP 2.2), 4 K 2 K @60 X fps
AV	接口
接口	接口
3 接口	接口
SPDIF/IEC958	接口
IPTV 接口 OTT	接口 IPTV 接口 OTT 接口 接口
其他功能	
其他功能	Miracast, 接口, Airplay, 接口, 接口, Picasa, 接口, 接口, 接口, 接口, 接口

品牌	品牌名称, 品牌名称, 品牌名称, 品牌名称, 品牌名称
----	------------------------------

品牌:

AmlogicS905 品牌名称 TV 品牌名称 品牌名称 Wi-Fi 品牌名称 品牌名称, 品牌名称 2.4 g h z 品牌名称, 品牌名称 品牌名称, 品牌名称 HD1080p 品牌名称, PPPOE, 品牌名称 品牌名称DLNA 品牌名称 Miracast, USB 品牌名称品牌名称.

品牌名称品牌名称?

- 1 * Amlogic S905 品牌名称 TV 品牌名称
- 1 * HDMI 品牌名称
- 1 * 品牌名称
- 1 * 品牌名称
- 1 * 品牌名称



Picture Show



Indicator Light Port





Micro SD Card

USB

USB



AV Port

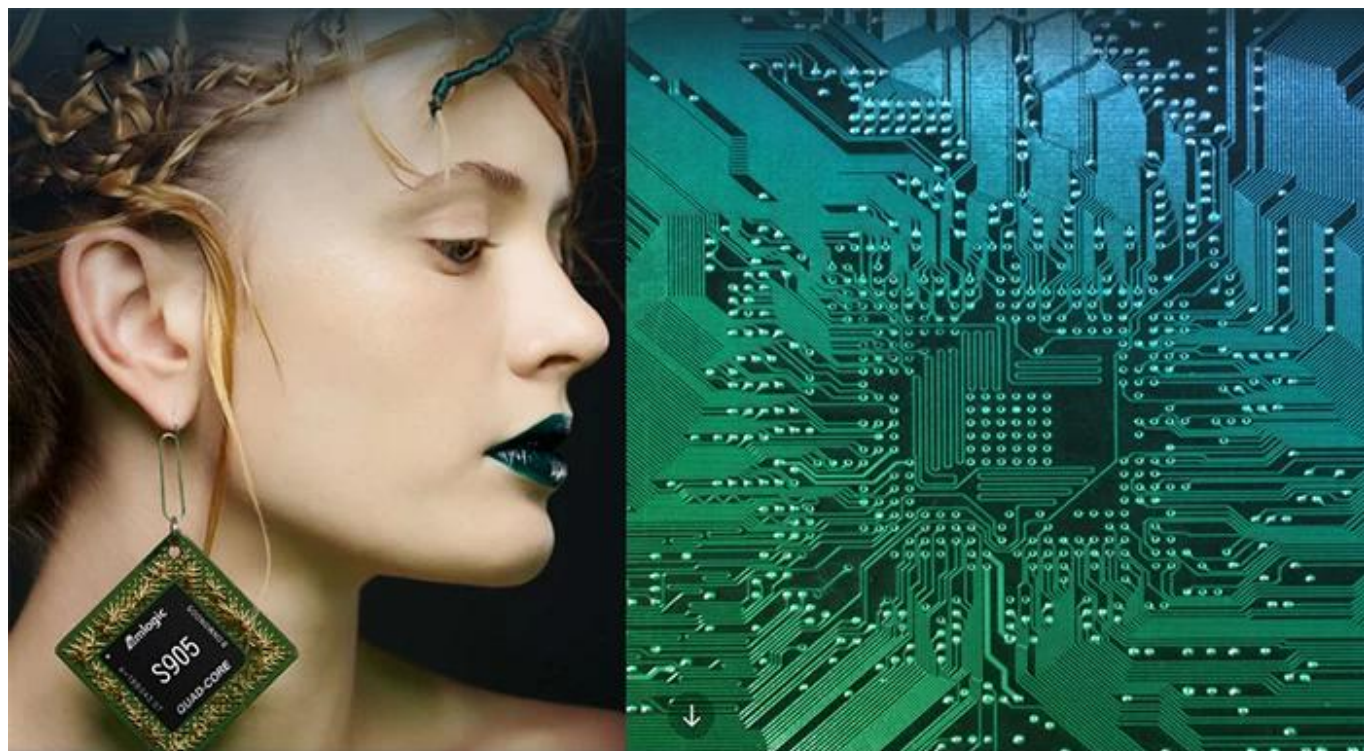
RJ 45 ETHERNET

HDMI™

Optical Port

Power Port





S905

64-Bit
Quad Core
Cortex A53

4K

H.265
@60fps

HDMI 2.0
HDCP 2.2

TSMC
28NM

DRM



64 bit CPU,

While maintaining the same power consumption, the computing power of CPU has also been greatly improved.

With 4K2K decoding capabilities,
it make 4K become the standard.



**The color quantity is increase by 60 times
more than the previous generation.**



10 bit decoding, it could highest support 1.07 billion color,
Compared to the previous generation of 16.7 million colors, it increase by 60 times.

**The sound upgrade,
while supporting Dolby Digital Plus and DTS.**



**3 + 2 core high-frequency GPU,
it make the TV turn into the PlayStation.**



The single core CPU frequency increase of 25%, 5-core computing speed can be achieved by the previous generation 8-core, it allowing you to experience smooth gaming.

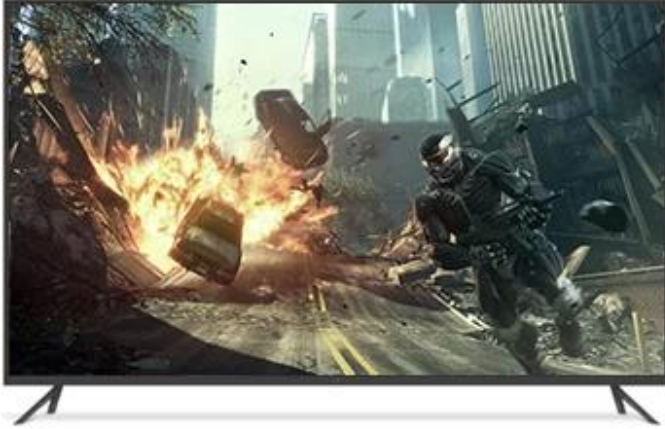
Support 802.11ac WiFi protocol.

200 Mbps
实测速率

120 Mbps
上一代实测速率



Wireless projection the image&video
of the phone/computer onto the TV.



Miracast



Airplay



DLNA



SMB

共享协议



Intel® WiDi

Equipped with smart contiguous
memory allocation technology,
make the system running more smoothly.



4.1

 **Bluetooth[®]**



HD2.0
Image output



HD1.0
Image output

Home entertainment, perfect enjoyment

- Extreme graphics, HD2.0 Image output
 - 1000M Ethernet LAN
-



Unforgettable visual
experience.

1920 * 1080 HD



Support 3D



1080P



Ultra Wide Vision

It's all about speeding up.



1G DDR3 dual channel memory and 8GB eMMC high speed flash memory.

The dual channel memory runs 1080p HD videos and large games flawlessly,
while the eMMC high speed flash memory controls apps, games, and multi-media storage with ease.

Everything comes alive with 3D.



Experience home entertainment in 3D!



S905

One of industry's first multimedia SoCs with 64-bit architecture, S905 is designed to deliver immersive theatre-level home entertainment to the users with excellent audio and video processing capabilities. It also supports operator-level security and is a perfect choice for OTT/IPTV/DVB STB, TV dongle and smart home applications.