

Amlogic S905 四核 四核 四核 5.1 四核 1G 8G 4K 2K UHD 四核 四核 四核 S9

S9

Amlogic S905 Quad Core S9

New! Amlogic S905 Quad Core ARM Cortex™-A53 CPU up to 2.0 GHz, 1GB/8GB H.265 4K2K Android 5.1 TV Box!



64
S905

1GB
8GB



DLNA
CERTIFIED

H.265
HEVC





4k2k



Android 5.1

FULL HD
1080P

四核 四核	
四核 四核.	S9
CPU	Amlogic S905 四核 四核 ARM Cortex™ -A53 CPU 四核 2.0GHz(DVFS)
GPU	四核 四核 Mali-450 四核 750Mhz
四核	8GB
DDR3	1GB DDR3
四核	四核: 四核
www.sztomato.com	
四核四核	DC 5V/2A
四核 四核(LED)	LED 四核, 四核 四核: 四核 四核 四核: <0.5W
四核四核	
四核四核	Android™ 5.1 四核
四核	H.265 HEVC MP-10@L5.1 四核 4Kx2K@60fps
	H.264 AVC HP™ @L5.1 四核 4Kx2K@30fps
	H.264 MVC 四核 1080P@60fps
	MPEG-4 ASP@L5 四核 1080P@60fps(ISO-14496)
	WMV/VC-1 SP/MP/AP 四核 1080P@60fps
	AVS-P16(AVS) /AVS-P2 四核 四核 1080P@60fps
	MPEG-2 MP/HL 四核 1080P@60fps(ISO-13818)
	MPEG-1 MP/HL 四核 1080P@60fps(ISO-11172)
	RealVideo 8/9/10 四核 1080P
	WebM(四核 VGA)
四核 四核 四核 四核 四核 四核	
MJPEG 四核 JPEG 四核 四核 四核(ISO/IEC-10918)	
JPEG 四核, 四核 四核, 四核 四核 四核 四核	
.mkv,.wmv,*.mpg, *.mpeg, *.dat, *.avi, *.mov, *.iso, *.mp4, *.rm 四核 *.jpg 四核 四核 四核	
四核	DSP 四核 四核 四核 四核 MediaCPU
	MP3, AAC, WMA, RM, FLAC, Ogg 四核 5.1 四核四核 四核四核 四核 四核
	四核 SPDIF/IEC958 四核 PCM 四核 四核 四核 四核/四核
四核	HD JPEG, BMP, GIF, PNG, TIF
四核 四核	四核, 四核, 四核, 四核, 四核 四核 四核
www.sztomato.com	
1*HDMI™	4K*2K UHD 四核, HDMI™ 2.0
1*AV 四核	480i/576i 四核 四核 四核
3*USB	2*USB 四核 四核, 1*USB 四核
1*四核	四核 四核 四核
1*RJ45	四核 四核四核, 1000M LAN
1*SD™ /MMC 四核	4GB/8GB/16GB/32GB/64GB 四核

□□	
□□□	□□ □□□ □□□□ □□□□ Netflix, Hulu, Flixster, Youtube □□ □□□□□.
□	□□ □□□□□ □□, □□□□□ □□□□ □□□□□ □ □□□□. ™ □□□□ □
□□	□□ □□□ □□, □□ HDD, U □□□, SD ™ /MMC□□.
□□□□□ □□□□□	SKYPE □□ □□, MSN, □□□□, □□□, QQ □□ □□□□□.
□□	□□ □□□, □□□ □ DLNA □□ □□ 2.4G □□ □□□/□□□ □□

□□□ □□ □□ □□□ ?

1*Amlogic S905 □□ □□

1*HDMI □□□

1 * □□ □□

1 *□□ □□□

1*□□□ □□□



Picture Show

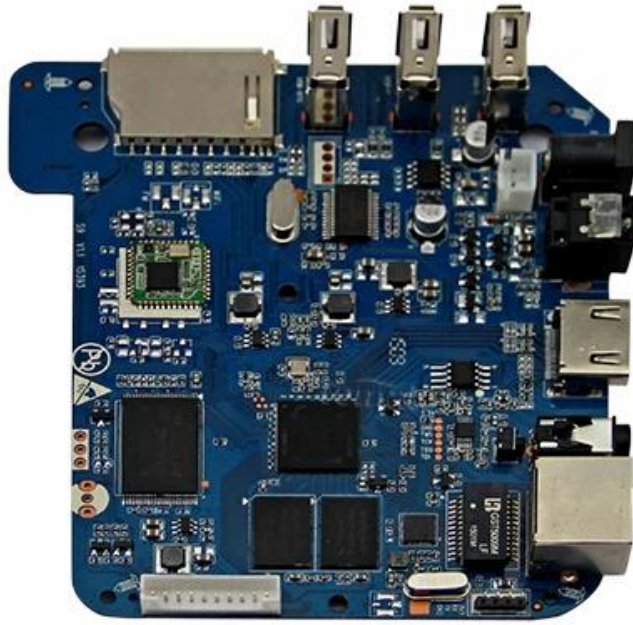


Indicator



USB*3

SD/MMC Card





S905

64-Bit
Quad Core
Cortex A53

4K

H.265
@60fps

HDMI 2.0
HDCP 2.2

TSMC
28NM

DRM



64 bit CPU,

While maintaining the same power consumption, the computing power of CPU has also been greatly improved.

With 4K2K decoding capabilities,
it make 4K become the standard.



The color quantity is increase by 60 times more than the previous generation.



10 bit decoding, it could highest support 1.07 billion color,
Compared to the previous generation of 16.7 million colors, it increase by 60 times.

The sound upgrade,
while supporting Dolby Digital Plus and DTS.



3 + 2 core high-frequency GPU,
it make the TV turn into the PlayStation.



The single core CPU frequency increase of 25%, 5-core computing speed can be achieved by the previous generation 8-core, it allowing you to experience smooth gaming.

Support 802.11ac WiFi protocol.

200 Mbps
实际速率

120 Mbps
上一代实际速率



Wireless projection the image&video
of the phone/computer onto the TV.



Miracast



Airplay



DLNA



SMB
共享协议



Intel@WIDI

Equipped with smart contiguous
memory allocation technology,
make the system running more smoothly.



4.1



Bluetooth[®]



HD2.0
Image output



HD1.0
Image output

Home entertainment, perfect enjoyment

- Extreme graphics, HD2.0 Image output
 - 1000M Ethernet LAN
-



Unforgettable visual
experience.

1920 * 1080 HD



Support 3D



1080P



Ultra Wide Vision

It's all about speeding up.



1G DDR3 dual channel memory and 8GB eMMC high speed flash memory.

The dual channel memory runs 1080p HD videos and large games flawlessly,
while the eMMC high speed flash memory controls apps, games, and multi-media storage with ease.

Everything comes alive with 3D.



Experience home entertainment in 3D!



S905

One of industry's first multimedia SoCs with 64-bit architecture, S905 is designed to deliver immersive theatre-level home entertainment to the users with excellent audio and video processing capabilities. It also supports operator-level security and is a perfect choice for OTT/IPTV/DVB STB, TV dongle and smart home applications.