

4K Android TV Box Manufacturer China

Realtek RTD1295 Android TV Box

Product Parameters

Model No.	Realtek RTD1295 4K Android TV Box Manufacturer	
CPU	Realtek RTD1295 Quad-Core ARM Cortex-A53 64-bit @2GHz	
GPU	ARM-T820	
Memory	DDR4: 2GB (Option: 1GB)	
Flash	eMMC: 16GB (Option: 8GB)	
Bluetooth	BT4.0	
Moudle	Space Aluminium	
I/O	1*HD output	4K*2K UHD Output, HD 2.0a
	1*HD input	HD input (HD1.4a~HD2.2a) ,Support HDCP Key with 1.4 or 2.2 version
	1*AV OUT	Composite video and audio output
	2*USB	1* USB 2.0, 1*USB 3.0
	1*OPTICAL	Digital Audio output
	1*SATA	SATA 3.0
	1*RJ45	Ethernet 10/100/1000Mbps
	1*TF CARD	Support 4GB~64GB
	1*Antenna	5dB extenal atenna, Powerful
Periheral Compatiblity	USB Touch-Screens; Camera; Bluetooth™ Earphone or Other Bluetooth™ Device, etc.	
Power	DC 5V/2A	
OS	Android 6.0 Marshmallow	
Video	Codec H.264 2K@60fps/4K@24fps	
	Decoder H.265 4K@60fps	
	HDR 10-bit HEVC/H.265 up to 4K@60fps, VP9 up to 4K@60fps,	
Audio	Support ture Dolby Digital and DTS HD	
	Support HD audio(7.1ch) decode and passthrough Redesigned Native player, Blu-ray better compatibility,Powerful subtitles, Built-in audio codec with 24bit resolution,	
Image	HD JPEG, BMP, GIF, PNG, TIF	
Language	Multilateral languages	
Online	Browse all video websites, support Netflix, Hulu, Flixster, Youtube, etc.	
Apps	Apps download freely form android market, amazon app store etc.	
Medium	Local Media playback, Support HDD, U Disck, SD/MMC Card	
Talk online	Support SKYPE video call, MSN, facebook, twitter, QQ etc	
Others	Support Email,office suit etc.	
	Support DLNA function	
	Support 2.4G wireless mouse/keyboard	

Smart BOX



4K
ULTRA HD

3D

SATA
3.0



4Core
64Bit

Video
Input

DVR

HDR

VP9



2GB
RAM

16GB
eMMC

2GB DDR4 RAM to make the game run more smoothly, eMMC to run more stable.

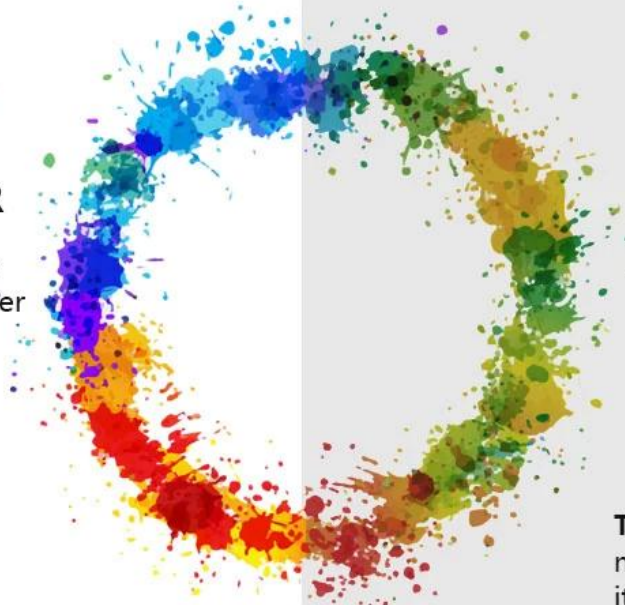




Advanced sound decoding technology,
a better user experience

ENHANCED COLOR

Provide a better color level, so that the viewer presents a greater degree of reality



The general color display, not bright and true, it is because the color gamut is not enough



Selecting a Sub Display in PIP Mode

The diagram illustrates the process of selecting a sub display in PIP mode on a Smart TV Box. It consists of three main parts: a sequence of steps, a screenshot of the PIP settings menu, and a screenshot of the Smart TV Box home screen.

Step 01: Select APP "Setting".

Step 02: Select "Start PIP".

Step 03: Multiple windows display content.

The screenshot of the PIP settings menu shows the following options:

- Start PIP** (selected)
- Broadcast**
- Record setting** (with a **Record** button)
- Resolution** (1920x1080)
- Output path** (/storage/emulated/0/Pictures/HDMIxDemo)
- Schedule record** (with a **Reservation** button)
- Mute** (checkbox)

The screenshot of the Smart TV Box home screen shows the following apps:

- HDMI IN** (selected)
- Apps**
- facebook**
- KD PLAYER**
- Settings**
- Chorme**
- Skype**
- You Tube**
- Play Store**
- Mu**

The Smart TV Box is shown with a digital display showing the time 12:95 and the date 07:30. The text "Multiple windows display content" is shown with an arrow pointing to the PIP mode interface.



Copy and burn what you want



4.0
Bluetooth®



Bluetooth 4.0 makes it easy to connect your keyboard, mouse, game console, and more









4K **3D** **DVR**
ULTRA HD



As a premier manufacturer based in China, our 4K Android TV Box sets the benchmark for cutting-edge entertainment technology. Powered by Realtek RTD1295, this device delivers exceptional performance and features that cater to the most discerning users.

At the heart of this TV box is the Realtek RTD1295 chipset, renowned for its ability to handle 4K content flawlessly. Whether you're streaming movies, binge-watching your favorite shows, or immersing yourself in the latest games, the visual experience is nothing short of breathtaking. With support for HDR (High Dynamic Range) imaging, colors are vivid and lifelike, while contrast and brightness levels are optimized for stunning realism.

Audio quality is equally impressive thanks to Dolby Audio integration. From crisp dialogues to immersive soundscapes, every audio detail is rendered with precision, enhancing your overall viewing or gaming experience.

Connectivity options abound with this TV box. Whether you prefer wireless convenience or stable wired connections, you can seamlessly connect via Wi-Fi or Ethernet, ensuring smooth streaming

and browsing experiences. Multiple USB ports allow for easy connection of peripherals such as keyboards, mice, or external storage devices, expanding the versatility of your entertainment setup.

Navigating through the Android ecosystem is intuitive and seamless. Access a vast array of apps, games, and content on the Google Play Store, tailored to your preferences and interests. The Android operating system also ensures regular updates and improvements, keeping your TV box up-to-date with the latest features and enhancements.

Storage capacity is never a concern with this TV box. With support for expandable storage via SD cards or external hard drives, you can store a vast library of media files, apps, and games without worrying about running out of space.

Whether you're a casual viewer, a gaming enthusiast, or a home theater aficionado, our 4K Android TV Box is designed to elevate your entertainment experiences. With unparalleled visual and audio quality, robust connectivity options, and a user-friendly interface, it's the perfect companion for transforming your living room into a hub of immersive entertainment.