

# Android Smart TV Box with SATA 3.0, Best Android TV Box HDMI

Product Parameters		
Model No.	Best Android TV Box	
CPU	Realtek RTD1295 Quad-Core ARM Cortex-A53 64-bit @2GHz	
GPU	ARM-T820	
Memory	DDR4: 2GB (Option: 1GB)	
Flash	eMMC: 16GB (Option: 8GB)	
Bluetooth	BT4.0	
Moudle	Space Aluminium	
I/O	1*HD output	4K*2K UHD Output, HD 2.0a
	1*HD input	HD input (HD1.4a~HD2.2a) ,Support HDCP Key with 1.4 or 2.2 version
	1*AV OUT	Composite video and audio output
	2*USB	1* USB 2.0, 1*USB 3.0
	1*OPTICAL	Digital Audio output
	1*SATA	SATA 3.0
	1*RJ45	Ethernet 10/100/1000Mbps
	1*TF CARD	Support 4GB~64GB
	1*Antenna	5dB extenal atenna, Powerful
Periheral Compatibility	USB Touch-Screens; Camera; Bluetooth™ Earphone or Other Bluetooth™ Device, etc.	
Power	DC 5V/2A	
OS	Android 6.0 Marshmallow	
Video	Codec H.264 2K@60fps/4K@24fps	
	Decoder H.265 4K@60fps	
	HDR 10-bit HEVC/H.265 up to 4K@60fps, VP9 up to 4K@60fps,	
Audio	Support ture Dolby Digital and DTS HD Support HD audio(7.1ch) decode and passthrough Redesigned Native player, Blu-ray better compatibility,Powerful subtitles, Built-in audio codec with 24bit resolution,	
Image	HD JPEG, BMP, GIF, PNG, TIF	
Language	Multilateral languages	
Online	Browse all video websites, support Netflix, Hulu, Flixster, Youtube, etc.	
Apps	Apps download freely form android market, amazon app store etc.	
Medium	Local Media playback, Support HDD, U Disk, SD/MMC Card	
Talk online	Support SKYPE video call, MSN, facebook, twitter, QQ etc	
Others	Support Email,office suit etc.	
	Support DLNA function Support 2.4G wireless mouse/keyboard	

Android tv box HDMI input for video recording, PIP and UDP Broadcasting.

Mini PC HDMI input for video recording, PIP and UDP Broadcasting Quad Core Cortex A53 4K

Media player HDMI input support for PVR, Picture in picture, and video broadcasting over UDP, external 5db external antenna

Internet TV BOX HDMI input and SATA support true Dolby Digital and DTS HD

Set top box HDMI Input support USB3.0 and 2GB DDR4/16GB EMMC

Best TV Box HDMI Input Realtek RTD1295 Quad-Core ARM Cortex-A53 64-bit 2GHz

Smart TV Box HDMI Input support Dolby Digital and DTS HD

Android Smart TV Box SATA 3.0 & USB3.0

Android Set Top Box HDMI in Bluetooth 4.0 and external 5db antenna

TV Box android HDMI in Support True Dolby Digital and DTS HD

Best Android TV Box HDMI in for video recording, PIP and UDP Broadcasting, USB3.0 and SATA 3.0

Android streaming box HDMI In Realtek RTD1295 Quad-Core ARM Cortex-A53 64-bit 2GHz ARM-T820

Android media player box HDMI in 2GB DDR4 /16GB EMMC 2.4G/5.8G wifi ac

# Smart BOX



**4K**  
ULTRA HD

**3D**

**SATA**  
3.0



**4Core**  
64Bit

**Video**  
**Input**

**DVR**

**HDR**

**VP9**



2GB  
RAM

16GB  
eMMC

2GB DDR4 RAM to make the game run more smoothly, eMMC to run more stable.



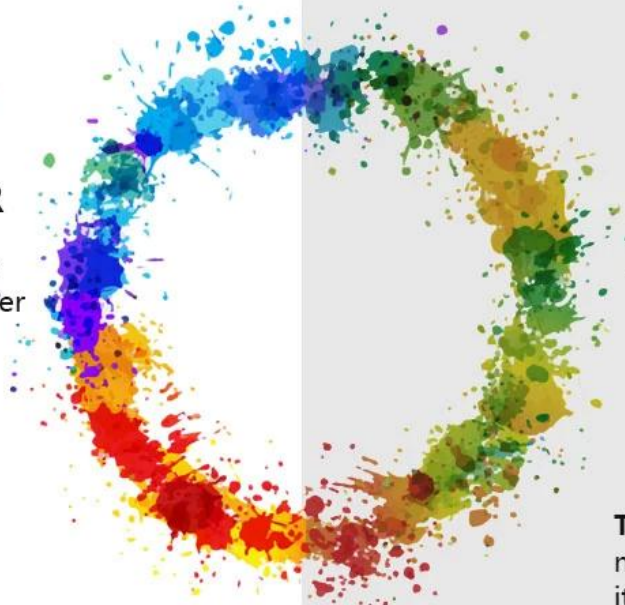


Advanced sound decoding technology,  
a better user experience



## ENHANCED COLOR

Provide a better color level, so that the viewer presents a greater degree of reality



The general color display, not bright and true, it is because the color gamut is not enough



## Selecting a Sub Display in PIP Mode

The diagram illustrates the process of selecting a sub display in PIP mode on a Smart TV Box. It consists of three main parts: a sequence of steps, a screenshot of the PIP settings menu, and a screenshot of the Smart TV Box home screen.

**Step 01:** Select APP "Setting".

**Step 02:** Select "Start PIP".

**Step 03:** Multiple windows display content.

The screenshot of the PIP settings menu shows the following options:

- Start PIP** (selected)
- Broadcast**
- Record setting** (with a **Record** button)
- Resolution** (1920x1080)
- Output path** (/storage/emulated/0/Pictures/HDMIxDemo)
- Schedule record** (with a **Reservation** button)
- Mute** (checkbox)

The screenshot of the Smart TV Box home screen shows the following apps:

- HDMI IN** (selected)
- Apps**
- facebook**
- KD PLAYER**
- Settings**
- Chorme**
- Skype**
- You Tube**
- Play Store**
- Mu**

The Smart TV Box is shown with a digital display showing the time 12:95 and the date 07:30. The text "Multiple windows display content" is shown with an arrow pointing to the PIP mode interface.



Copy and burn what you want



4.0  
Bluetooth®



Bluetooth 4.0 makes it easy to connect your keyboard, mouse, game console, and more











**4K** **3D** **DVR**  
**ULTRA HD**



## **Unleash the Power of SATA 3.0**

Introducing our Android Smart TV Box equipped with SATA 3.0, a revolutionary feature that takes your entertainment to the next level. SATA 3.0 offers lightning-fast data transfer speeds, providing seamless access to your favorite content and ensuring a smooth streaming experience.

## **Best HDMI Output for Immersive Visuals**

Experience visuals like never before with the best HDMI output. Our Android Smart TV Box supports high-definition displays, delivering crisp and vibrant images. Whether you're streaming movies, playing games, or browsing content, the HDMI output ensures an immersive viewing experience.



## **Massive Storage Capacity**

Say goodbye to storage limitations. The inclusion of SATA 3.0 in our Android Smart TV Box allows for expanded storage options. Connect external hard drives or SSDs to unlock massive storage capacity, ensuring you never run out of space for your favorite movies, shows, and apps.

## **Seamless Connectivity**

Connectivity is key, and our Android Smart TV Box excels in this aspect. With advanced features like SATA 3.0, enjoy seamless connectivity for a hassle-free entertainment experience. Whether you're streaming, gaming, or multitasking, stay connected with a device that prioritizes speed and efficiency.

## **Future-Proof Technology**

Stay ahead with future-proof technology integrated into our Android Smart TV Box. As a leader in the industry, we prioritize innovation, ensuring that your device remains relevant and capable of handling the latest advancements in entertainment technology.

## **Customizable Entertainment Experience**

Tailor your entertainment setup with customizable features. Our Android Smart TV Box offers user-friendly customization options, allowing you to personalize settings, themes, and preferences. Create an entertainment environment that aligns with your unique tastes.

## **User-Friendly Interface**

Navigating through your entertainment options is a breeze with our user-friendly interface. Access apps, settings, and customization features effortlessly, making it easy to switch between applications and enjoy a seamless user experience.

## **Trusted Manufacturer**

Choose a trusted manufacturer for your entertainment needs. Our commitment to quality and customer satisfaction sets us apart. With a reputation for delivering top-notch products, our Android Smart TV Box with SATA 3.0 combines performance, innovation, and reliability.

## **Easy Setup**

Setting up your Android Smart TV Box with SATA 3.0 is simple and straightforward. Enjoy a hassle-free installation process, and start experiencing the benefits of advanced storage and connectivity in no time.

Immerse yourself in the future of entertainment with our Android Smart [TV Box](#) featuring SATA 3.0. From lightning-fast data transfer to the best HDMI output, it's a device designed to redefine your TV experience.