

New Android TV Box with Android 6.0, Android TV Box HDMI input for video recording

Product Parameters		
Model No.	Android TV Box	
CPU	Realtek RTD1295 Quad-Core ARM Cortex-A53 64-bit @2GHz	
GPU	ARM-T820	
Memory	DDR4: 2GB (Option: 1GB)	
Flash	eMMC: 16GB (Option: 8GB)	
Bluetooth	BT4.0	
Moudle	Space Aluminium	
I/O	1*HD output	4K*2K UHD Output, HD 2.0a
	1*HD input	HD input (HD1.4a~HD2.2a) ,Support HDCP Key with 1.4 or 2.2 version
	1*AV OUT	Composite video and audio output
	2*USB	1* USB 2.0, 1*USB 3.0
	1*OPTICAL	Digital Audio output
	1*SATA	SATA 3.0
	1*RJ45	Ethernet 10/100/1000Mbps
	1*TF CARD	Support 4GB~64GB
	1*Antenna	5dB extenal antenna, Powerful
Periheral Compatibility	USB Touch-Screens; Camera; Bluetooth™ Earphone or Other Bluetooth™ Device, etc.	
Power	DC 5V/2A	
OS	Android 6.0 Marshmallow	
Video	Codec H.264 2K@60fps/4K@24fps	
	Decoder H.265 4K@60fps	
	HDR 10-bit HEVC/H.265 up to 4K@60fps, VP9 up to 4K@60fps,	
Audio	Support ture Dolby Digital and DTS HD	
	Support HD audio(7.1ch) decode and passthrough Redesigned Native player, Blu-ray better compatibility,Powerful subtitles, Built-in audio codec with 24bit resolution,	
Image	HD JPEG, BMP, GIF, PNG, TIF	
Language	Multilateral languages	
Online	Browse all video websites, support Netflix, Hulu, Flixster, Youtube, etc.	
Apps	Apps download freely form android market, amazon app store etc.	
Medium	Local Media playback, Support HDD, U Disck, SD/MMC Card	
Talk online	Support SKYPE video call, MSN, facebook, twitter, QQ etc	
Others	Support Email,office suit etc.	
	Support DLNA function	
	Support 2.4G wireless mouse/keyboard	

Smart BOX



4K
ULTRA HD

3D

SATA
3.0



4Core
64Bit

Video
Input

DVR

HDR

VP9



2GB
RAM

16GB
eMMC

2GB DDR4 RAM to make the game run more smoothly, eMMC to run more stable.

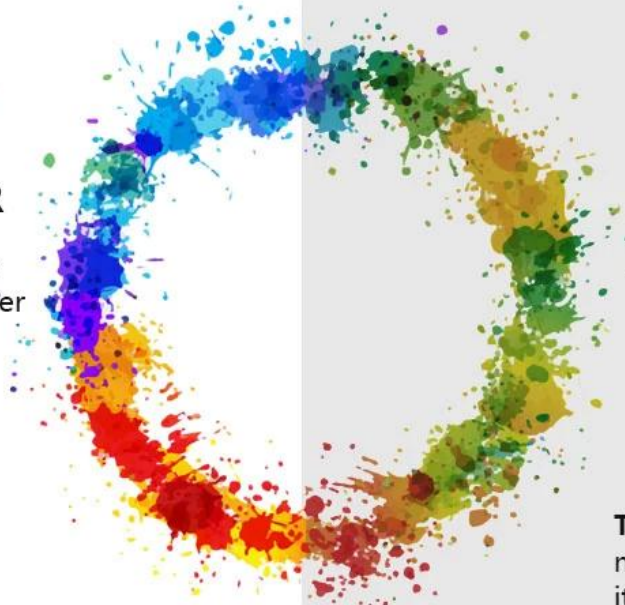




Advanced sound decoding technology,
a better user experience

ENHANCED COLOR

Provide a better color level, so that the viewer presents a greater degree of reality



The general color display, not bright and true, it is because the color gamut is not enough



Selecting a Sub Display in PIP Mode

The diagram illustrates the process of selecting a sub display in PIP mode on a Smart TV Box. It consists of three main parts: a sequence of steps, a screenshot of the PIP settings menu, and a screenshot of the Smart TV Box home screen.

Step 01: Select APP "Setting".

Step 02: Select "Start PIP".

Step 03: Multiple windows display content.

The screenshot of the PIP settings menu shows the following options:

- Start PIP** (selected)
- Broadcast**
- Record setting** (with a **Record** button)
- Resolution** (1920x1080)
- Output path** (/storage/emulated/0/Pictures/HDMIxDemo)
- Schedule record** (with a **Reservation** button)
- Mute** (checkbox)

The screenshot of the Smart TV Box home screen shows the following apps:

- HDMI IN** (selected)
- Apps**
- facebook**
- KD PLAYER**
- Settings**
- Chorme**
- Skype**
- You Tube**
- Play Store**
- Mu**

A physical Smart TV Box is shown on the right side of the diagram, with a digital display showing the time 12:95 and the date 12/24.



Copy and burn what you want



4.0
Bluetooth®



Bluetooth 4.0 makes it easy to connect your keyboard, mouse, game console, and more









4K **3D** **DVR**
ULTRA HD



Welcome to the future of home entertainment with our new Android TV box, designed to elevate your viewing experience to new heights. With Android 6.0 Marshmallow at its core and HDMI input for video recording, this device offers a wide range of features and capabilities that will revolutionize the way you enjoy content.

Key Features of Our New Android TV Box:

1. **Android 6.0 Marshmallow:** Experience the latest Android operating system, providing a smooth and intuitive user interface, enhanced app performance, and improved battery life for uninterrupted entertainment.
2. **HDMI Input for Video Recording:** Capture your favorite moments directly from your TV screen with the HDMI input, allowing you to record videos, gameplay, and live TV for later viewing or sharing.

3. **4K Ultra HD Streaming:** Enjoy stunning 4K resolution streaming for crisp and clear visuals, bringing every detail to life with vibrant colors and sharp contrast for an immersive viewing experience.
4. **Powerful Performance:** Equipped with a powerful processor and ample RAM, our Android TV box delivers smooth multitasking, fast app loading times, and seamless gaming performance without lag or buffering.
5. **Expandable Storage:** Store your favorite apps, games, and media files with ease thanks to expandable storage options, ensuring you never run out of space for your entertainment needs.
6. **Dual-Band Wi-Fi:** Stay connected with dual-band Wi-Fi support, providing stable and high-speed internet connectivity for streaming, browsing, and downloading content.

Enhance Your Entertainment Experience:

1. **Versatile Content:** Access a wide range of content from popular streaming services, including Netflix, YouTube, Hulu, and more, directly from your TV screen.
2. **Gaming Experience:** Transform your TV into a gaming console with access to a vast library of games from the Google Play Store, compatible with game controllers for immersive gameplay.
3. **Smart Home Integration:** Connect your Android TV box to smart home devices for seamless control of lighting, thermostats, and other smart devices, enhancing your home automation experience.
4. **Easy Setup and Use:** Set up our Android TV box in minutes with simple plug-and-play installation, intuitive navigation, and customizable settings for personalized viewing preferences.

Upgrade to our new [Android TV box](#) with Android 6.0 and HDMI input for video recording and unlock a world of entertainment possibilities. Whether you're streaming your favorite shows, recording videos, or gaming, this device offers exceptional performance and versatility. Elevate your home entertainment experience today.