

Best Android TV Box HDMI 4K Android TV Box Manufacturer China

Product Parameters		
Model No.	Realtek RTD1295	
CPU	Realtek RTD1295 Quad-Core ARM Cortex-A53 64-bit @2GHz	
GPU	ARM-T820	
Memory	DDR4: 2GB (Option: 1GB)	
Flash	eMMC: 16GB (Option: 8GB)	
Bluetooth	BT4.0	
Moudle	Space Aluminium	
I/O	1*HD output	4K*2K UHD Output, HD 2.0a
	1*HD input	HD input (HD1.4a~HD2.2a) ,Support HDCP Key with 1.4 or 2.2 version
	1*AV OUT	Composite video and audio output
	2*USB	1* USB 2.0, 1*USB 3.0
	1*OPTICAL	Digital Audio output
	1*SATA	SATA 3.0
	1*RJ45	Ethernet 10/100/1000Mbps
	1*TF CARD	Support 4GB~64GB
	1*Antenna	5dB extenal atenna, Powerful
Periheral Compatiblity	USB Touch-Screens; Camera; Bluetooth™ Earphone or Other Bluetooth™ Device, etc.	
Power	DC 5V/2A	
OS	Android 6.0 Marshmallow	
Video	Codec H.264 2K@60fps/4K@24fps	
	Decoder H.265 4K@60fps	
	HDR 10-bit HEVC/H.265 up to 4K@60fps, VP9 up to 4K@60fps,	
Audio	Support ture Dolby Digital and DTS HD	
	Support HD audio(7.1ch) decode and passthrough Redesigned Native player, Blu-ray better compatibility,Powerful subtitles, Built-in audio codec with 24bit resolution,	
Image	HD JPEG, BMP, GIF, PNG, TIF	
Language	Multilateral languages	
Online	Browse all video websites, support Netflix, Hulu, Flixster, Youtube, etc.	
Apps	Apps download freely form android market, amazon app store etc.	
Medium	Local Media playback, Support HDD, U Disck, SD/MMC Card	
Talk online	Support SKYPE video call, MSN, facebook, twitter, QQ etc	
Others	Support Email,office suit etc.	
	Support DLNA function	
	Support 2.4G wireless mouse/keyboard	

Smart BOX



4K
ULTRA HD

3D

SATA
3.0



4Core
64Bit

Video
Input

DVR

HDR

VP9



2GB
RAM

16GB
eMMC

2GB DDR4 RAM to make the game run more smoothly, eMMC to run more stable.

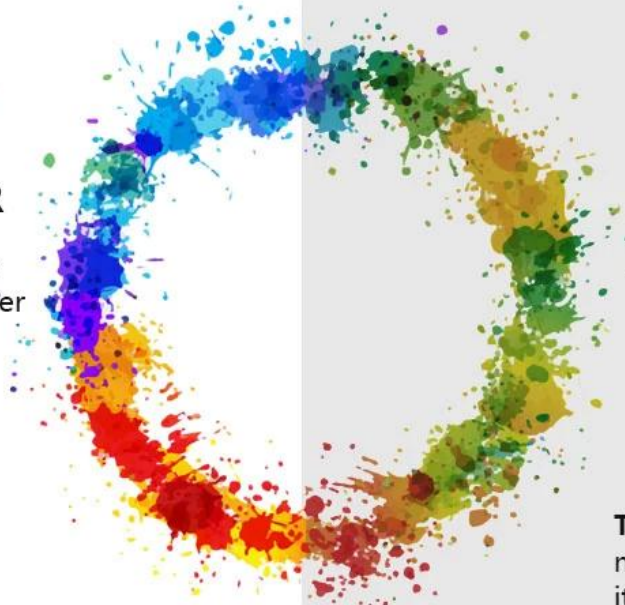




Advanced sound decoding technology,
a better user experience

ENHANCED COLOR

Provide a better color level, so that the viewer presents a greater degree of reality



The general color display, not bright and true, it is because the color gamut is not enough



Selecting a Sub Display in PIP Mode

The diagram illustrates the process of selecting a sub display in PIP mode on a Smart TV Box. It consists of three main parts: a sequence of steps, a screenshot of the PIP settings menu, and a screenshot of the Smart TV Box home screen.

Step 01: Select APP "Setting".

Step 02: Select "Start PIP".

Step 03: Multiple windows display content.

The screenshot of the PIP settings menu shows the following options:

- Start PIP** (selected)
- Broadcast**
- Record setting** (with a **Record** button)
- Resolution** (1920x1080)
- Output path** (/storage/emulated/0/Pictures/HDMIxDemo)
- Schedule record** (with a **Reservation** button)
- Mute** (checkbox)

The screenshot of the Smart TV Box home screen shows the following apps:

- HDMI IN** (selected)
- Apps**
- facebook**
- KD PLAYER**
- Settings**
- Chorme**
- Skype**
- You Tube**
- Play Store**
- Mu**

The Smart TV Box is shown with a digital display showing the time 12:95 and the date 07:30. The text "Multiple windows display content" is shown with an arrow pointing to the PIP mode interface.



Copy and burn what you want



4.0
Bluetooth®



Bluetooth 4.0 makes it easy to connect your keyboard, mouse, game console, and more









4K **3D** **DVR**
ULTRA HD



Our 4K HDMI Android TV Box stands out as a top-tier product from China's leading manufacturer. Packed with advanced features and innovative technology, it offers a superior entertainment experience for users seeking high-quality streaming, gaming, and more.

At the core of this device is its ability to deliver stunning 4K resolution through HDMI connectivity. Whether you're watching movies, TV shows, or playing games, every detail is rendered with clarity and precision, immersing you in a lifelike visual experience.

One of the key advantages of our TV box is its seamless integration with the Android operating system. This provides access to a vast library of apps, games, and content via the Google Play Store. From streaming services to productivity tools, the possibilities are endless, allowing you to customize your entertainment setup to suit your preferences.

Connectivity options are robust, with support for Wi-Fi and Ethernet ensuring stable and fast internet connections. This is crucial for smooth streaming of high-resolution content without buffering or interruptions. Additionally, multiple USB ports and expandable storage options give you

the flexibility to connect external devices and store a large collection of media files.

The inclusion of HDMI 2.0 ensures compatibility with a wide range of modern displays, including 4K TVs, monitors, and projectors. This means you can enjoy crisp and vibrant visuals on your preferred screen, enhancing your viewing or gaming experience.

Enhanced audio capabilities further elevate the entertainment factor. Whether you're using built-in speakers or connecting to a sound system, the TV box delivers immersive sound quality with support for formats like Dolby Audio.

The user interface is designed to be intuitive and user-friendly, making navigation effortless. Whether you're setting up the device for the first time, browsing through apps, or adjusting settings, the interface ensures a seamless and enjoyable experience for users of all levels.

In summary, our 4K HDMI [Android TV Box](#) combines advanced technology, versatile connectivity, and user-friendly design to offer the best-in-class entertainment solution. Whether you're a casual viewer, a gaming enthusiast, or a multimedia enthusiast, this TV box is your gateway to a world of endless entertainment possibilities