

# Internet TV Box HDMI Input Best TV Box HDMI Input Realtek RTD1295

Product Parameters		
Model No.	Internet TV Box HDMI Input	
CPU	Realtek RTD1295 Quad-Core ARM Cortex-A53 64-bit @2GHz	
GPU	ARM-T820	
Memory	DDR4: 2GB (Option: 1GB)	
Flash	eMMC: 16GB (Option: 8GB)	
Bluetooth	BT4.0	
Moudle	Space Aluminium	
	1*HD output	4K*2K UHD Output, HD 2.0a
	1*HD input	HD input (HD1.4a~HD2.2a) ,Support HDCP Key with 1.4 or 2.2 version
	1*AV OUT	Composite video and audio output
	2*USB	1* USB 2.0, 1*USB 3.0
	1*OPTICAL	Digital Audio output
	1*SATA	SATA 3.0
	1*RJ45	Ethernet 10/100/1000Mbps
	1*TF CARD	Support 4GB~64GB
	1*Antenna	5dB extenal atenna, Powerful
Periheral Compatibility	USB Touch-Screens; Camera; Bluetooth™ Earphone or Other Bluetooth™ Device, etc.	
Power	DC 5V/2A	
OS	Android 6.0 Marshmallow	
Video	Codec H.264 2K@60fps/4K@24fps	
	Decoder H.265 4K@60fps	
	HDR 10-bit HEVC/H.265 up to 4K@60fps, VP9 up to 4K@60fps,	
Audio	Support ture Dolby Digital and DTS HD Support HD audio(7.1ch) decode and passthrough Redesigned Native player, Blu-ray better compatibility,Powerful subtitles, Built-in audio codec with 24bit resolution,	
Image	HD JPEG, BMP, GIF, PNG, TIF	
Language	Multilateral languages	
Online	Browse all video websites, support Netflix, Hulu, Flixster, Youtube, etc.	
Apps	Apps download freely form android market, amazon app store etc.	
Medium	Local Media playback, Support HDD, U Disk, SD/MMC Card	
Talk online	Support SKYPE video call, MSN, facebook, twitter, QQ etc	
Others	Support Email,office suit etc.	
	Support DLNA function Support 2.4G wireless mouse/keyboard	

# Smart BOX



**4K**  
ULTRA HD

**3D**

**SATA**  
3.0



**4Core**  
64Bit

**Video**  
**Input**

**DVR**

**HDR**

**VP9**



2GB  
RAM

16GB  
eMMC

2GB DDR4 RAM to make the game run more smoothly, eMMC to run more stable.

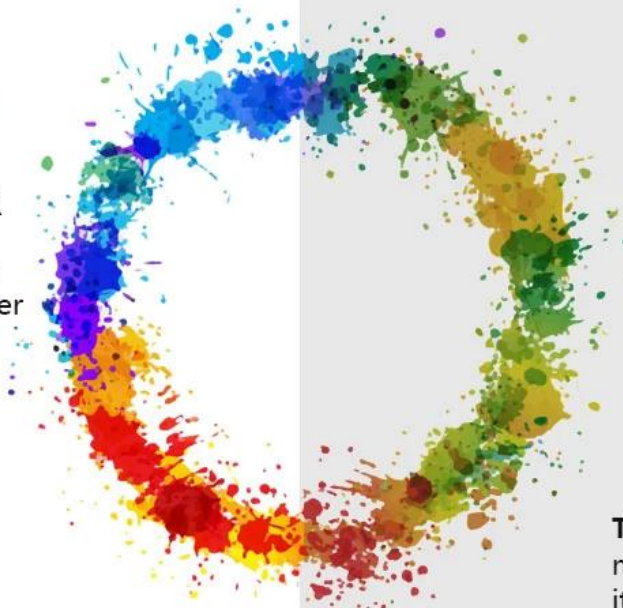




Advanced sound decoding technology,  
a better user experience

## ENHANCED COLOR

Provide a better color level, so that the viewer presents a greater degree of reality



The general color display, not bright and true, it is because the color gamut is not enough





## Selecting a Sub Display in PIP Mode

The diagram illustrates the process of selecting a sub display in PIP mode on a Smart TV Box. It consists of three main parts: a sequence of steps, a screenshot of the PIP settings menu, and a screenshot of the Smart TV Box home screen.

**Step 01:** Select APP "Setting".

**Step 02:** Select "Start PIP".

**Step 03:** Multiple windows display content.

The screenshot of the PIP settings menu shows the following options:

- Start PIP** (selected)
- Broadcast**
- Record setting** (with a **Record** button)
- Resolution** (1920x1080)
- Output path** (/storage/emulated/0/Pictures/HDMIxDemo)
- Schedule record** (with a **Reservation** button)
- Mute** (checkbox)

The screenshot of the Smart TV Box home screen shows the following apps:

- HDMI IN** (selected)
- Apps**
- facebook**
- KD PLAYER**
- Settings**
- Chorme**
- Skype**
- You Tube**
- Play Store**
- Mu**

The Smart TV Box is shown with a digital display showing the time 12:95 and the date 07:30. The text "Multiple windows display content" is shown with an arrow pointing to the PIP mode interface.



**Copy and burn what you want**



4.0  
Bluetooth®



Bluetooth 4.0 makes it easy to connect your keyboard, mouse, game console, and more











**4K** **3D** **DVR**  
**ULTRA HD**





Welcome to a new era of entertainment with our [Internet TV Box](#), designed to revolutionize your viewing experience. Here's why our product stands out:

**Exceptional Performance:** Powered by the advanced Realtek RTD1295 chipset, our TV Box delivers exceptional performance, ensuring smooth streaming, gaming, and media playback.

**High-Definition HDMI Input:** Experience seamless connectivity with HDMI input, allowing you to connect external devices such as gaming consoles, laptops, and cameras for a diverse entertainment setup.

**4K Ultra HD Streaming:** Immerse yourself in stunning 4K Ultra HD streaming, bringing every detail to life with vibrant colors and crisp clarity.

**Versatile Connectivity:** In addition to HDMI input, our TV Box offers versatile connectivity options including USB ports, Ethernet, Wi-Fi, and Bluetooth, providing seamless integration with various devices.

**Realtek RTD1295 Chipset:** The Realtek RTD1295 chipset ensures efficient performance, advanced multimedia capabilities, and support for a wide range of media formats.

**User-Friendly Interface:** Navigate through menus, apps, and settings effortlessly with our intuitive user interface, offering a seamless and enjoyable user experience.

**Advanced Audiovisual Experience:** Enjoy immersive audiovisual experiences with support for advanced audio technologies, enhancing your entertainment enjoyment.

**Sleek Design:** Our Internet TV Box features a sleek and modern design that complements any home entertainment setup, adding a touch of elegance to your living space.

Upgrade to our cutting-edge Internet TV Box with HDMI input and Realtek RTD1295 chipset for unparalleled entertainment experiences. Immerse yourself in high-definition streaming, gaming, and media playback with seamless connectivity options and exceptional performance.