

# Realtek RTD1295 Quad-Core ARM Cortex-A53 64-bit @2GHz Best Android TV Box

## HDMI IN Media Player Box

### Product Parameters

Model No.	Realtek RTD1295 HDMI in and SATA Box	
CPU	Realtek RTD1295 Quad-Core ARM Cortex-A53 64-bit @2GHz	
GPU	ARM-T820	
Memory	DDR4: 2GB (Option: 1GB)	
Flash	eMMC: 16GB (Option: 8GB)	
Bluetooth	BT4.0	
Mouldle	Space Aluminium	
I/O	1*HD output	4K*2K UHD Output, HD 2.0a
	1*HD input	HD input (HD1.4a~HD2.2a) ,Support HDCP Key with 1.4 or 2.2 version
	1*AV OUT	Composite video and audio output
	2*USB	1* USB 2.0, 1*USB 3.0
	1*OPTICAL	Digital Audio output
	1*SATA	SATA 3.0
	1*RJ45	Ethernet 10/100/1000Mbps
	1*TF CARD	Support 4GB~64GB
	1*Antenna	5dB extenal atenna, Powerful
Periheral Compatiblity	USB Touch-Screens; Camera; Bluetooth™ Earphone or Other Bluetooth™ Device, etc.	
Power	DC 5V/2A	
OS	Android 6.0 Marshmallow	
Video	Codec H.264 2K@60fps/4K@24fps	
	Decoder H.265 4K@60fps	
	HDR 10-bit HEVC/H.265 up to 4K@60fps, VP9 up to 4K@60fps,	
Audio	Support ture Dolby Digital and DTS HD	
	Support HD audio(7.1ch) decode and passthrough Redesigned Native player, Blu-ray better compatibility,Powerful subtitles, Built-in audio codec with 24bit resolution,	
Image	HD JPEG, BMP, GIF, PNG, TIF	
Language	Multilateral languages	
Online	Browse all video websites, support Netflix, Hulu, Flixster, Youtube, etc.	
Apps	Apps download freely form android market, amazon app store etc.	
Medium	Local Media playback, Support HDD, U Disck, SD/MMC Card	
Talk online	Support SKYPE video call, MSN, facebook, twitter, QQ etc	
Others	Support Email,office suit etc.	
	Support DLNA function	
	Support 2.4G wireless mouse/keyboard	

# Smart BOX



**4K**  
ULTRA HD

**3D**

**SATA**  
3.0



**4Core**  
64Bit

**Video**  
**Input**

**DVR**

**HDR**

**VP9**



2GB  
RAM

16GB  
eMMC

2GB DDR4 RAM to make the game run more smoothly, eMMC to run more stable.

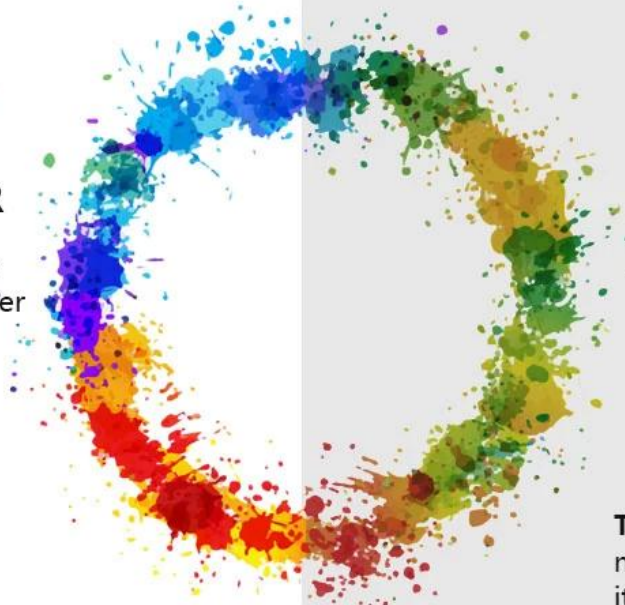




Advanced sound decoding technology,  
a better user experience

## ENHANCED COLOR

Provide a better color level, so that the viewer presents a greater degree of reality



The general color display, not bright and true, it is because the color gamut is not enough





## Selecting a Sub Display in PIP Mode

The diagram illustrates the process of selecting a sub display in PIP mode on a Smart TV Box. It consists of three main parts: a sequence of steps, a screenshot of the PIP settings menu, and a screenshot of the Smart TV Box home screen.

**Step 01:** Select APP "Setting".

**Step 02:** Select "Start PIP".

**Step 03:** Multiple windows display content.

The screenshot of the PIP settings menu shows the following options:

- Start PIP** (selected)
- Broadcast**
- Record setting** (with a **Record** button)
- Resolution** (1920x1080)
- Output path** (/storage/emulated/0/Pictures/HDMIxDemo)
- Schedule record** (with a **Reservation** button)
- Mute** (checkbox)

The screenshot of the Smart TV Box home screen shows the following apps:

- HDMI IN** (selected)
- Apps**
- facebook**
- KD PLAYER**
- Settings**
- Chorme**
- Skype**
- You Tube**
- Play Store**
- Mu**

The Smart TV Box is shown with a digital display showing the time 12:95 and the date 07:30. The text "Multiple windows display content" is shown with an arrow pointing to the PIP mode interface.



Copy and burn what you want



4.0  
Bluetooth®



Bluetooth 4.0 makes it easy to connect your keyboard, mouse, game console, and more











**4K** **3D** **DVR**  
**ULTRA HD**



Elevate your home entertainment with our feature-rich Android TV Box powered by the Realtek RTD1295 processor:

1. **High-Performance Processing:** The Quad-Core ARM Cortex-A53 processor, operating at 2GHz, ensures smooth and responsive performance, handling demanding applications and multitasking effortlessly.
2. **4K UHD Support:** Immerse yourself in stunning 4K UHD content for crystal-clear visuals and lifelike details, bringing your favorite movies, shows, and games to life.
3. **HDMI IN Functionality:** The HDMI IN port transforms your TV into a multimedia hub, allowing you to connect external devices such as gaming consoles, Blu-ray players, and more, expanding your entertainment options.

4. **Comprehensive Connectivity:** Benefit from a range of connectivity options, including USB, Ethernet, and Wi-Fi, providing flexibility for various devices and network setups.
5. **Advanced Media Player:** Enjoy a feature-rich media player with support for a variety of formats, ensuring compatibility with your favorite content.
6. **User-Friendly Interface:** Navigate effortlessly through the intuitive interface, offering a seamless and enjoyable user experience for users of all ages.
7. **Reliable Build Quality:** Built with quality components, our Android TV Box ensures durability and reliability for long-term use, making it a valuable addition to your home entertainment setup.
8. **Future-Proof Technology:** Stay ahead with future-proof technology, ensuring your device remains relevant and capable of handling evolving entertainment standards.

Transform your TV into a smart multimedia center with the Realtek [RTD1295 Android TV Box](#). Elevate your entertainment experience and enjoy the best in performance, versatility, and visual excellence.