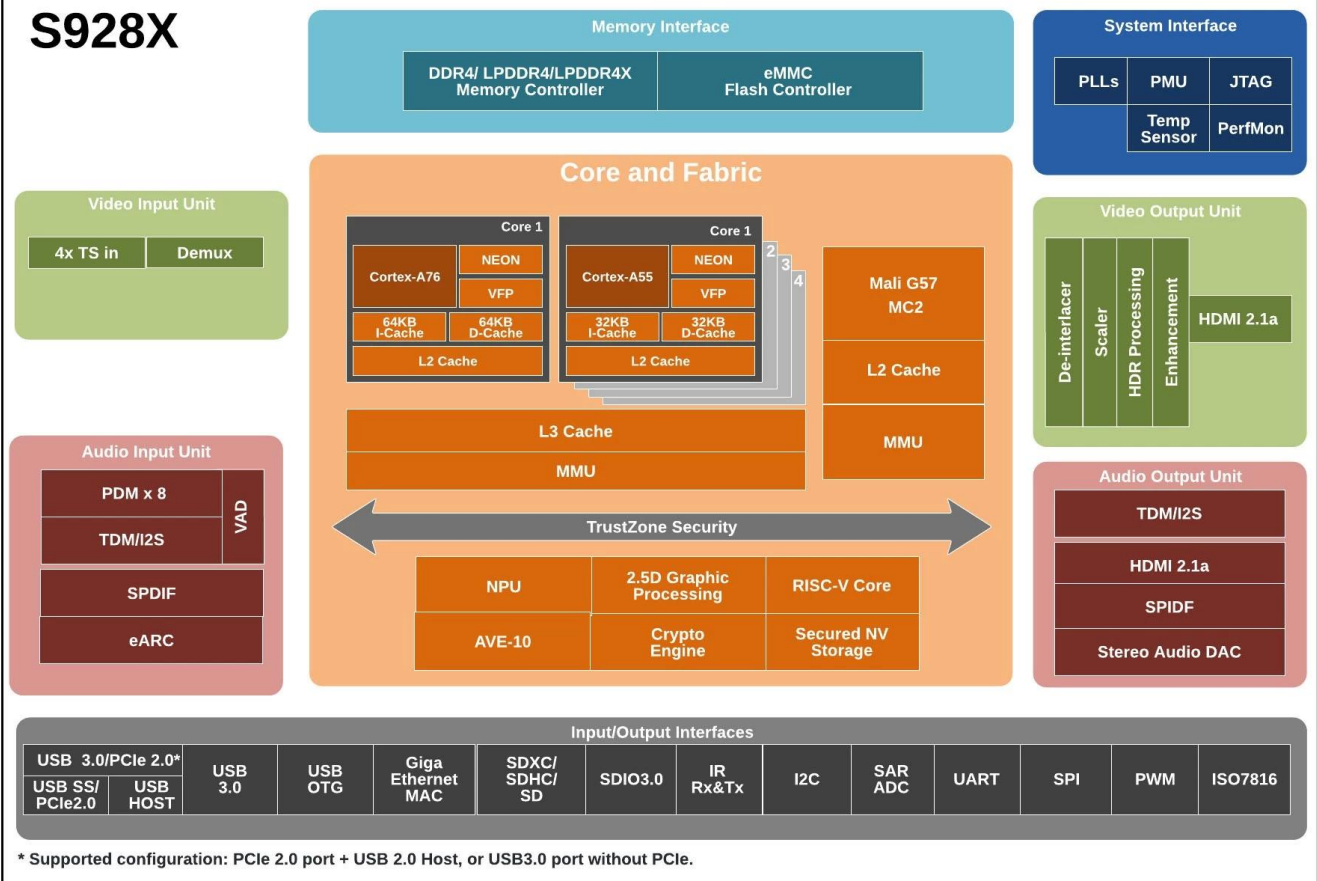


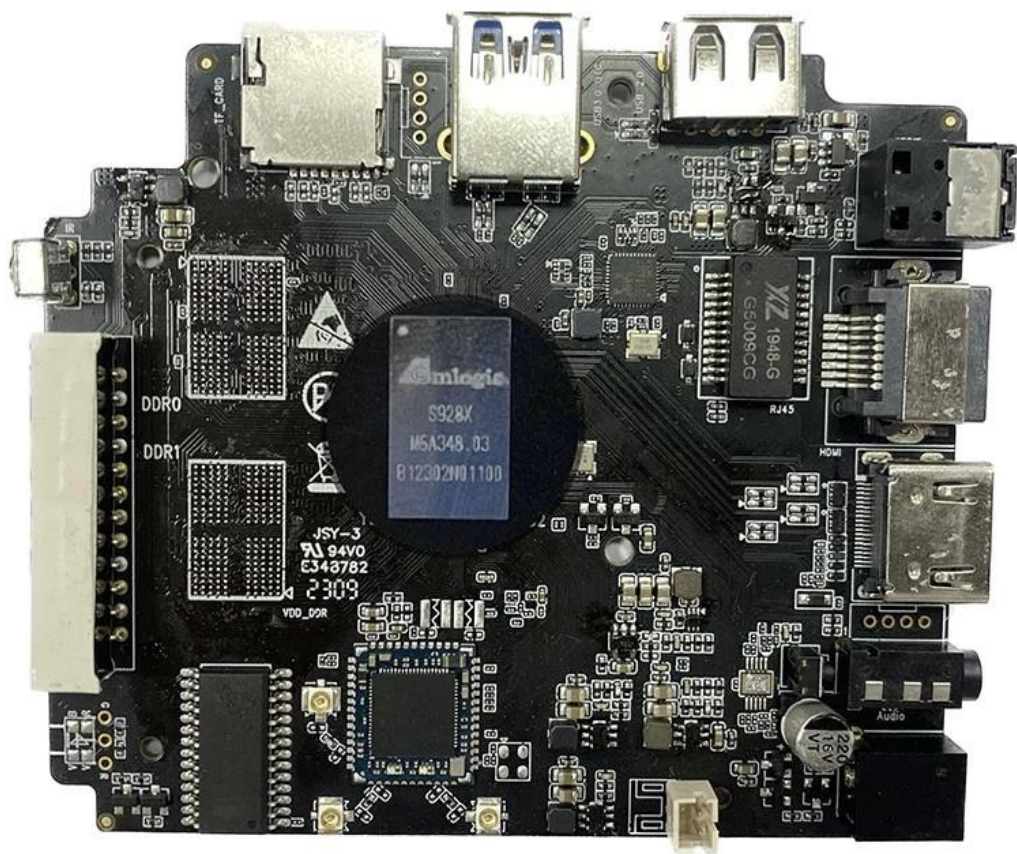
Streaming Media Player Supplier, Android TV Box Factory Direct Sale

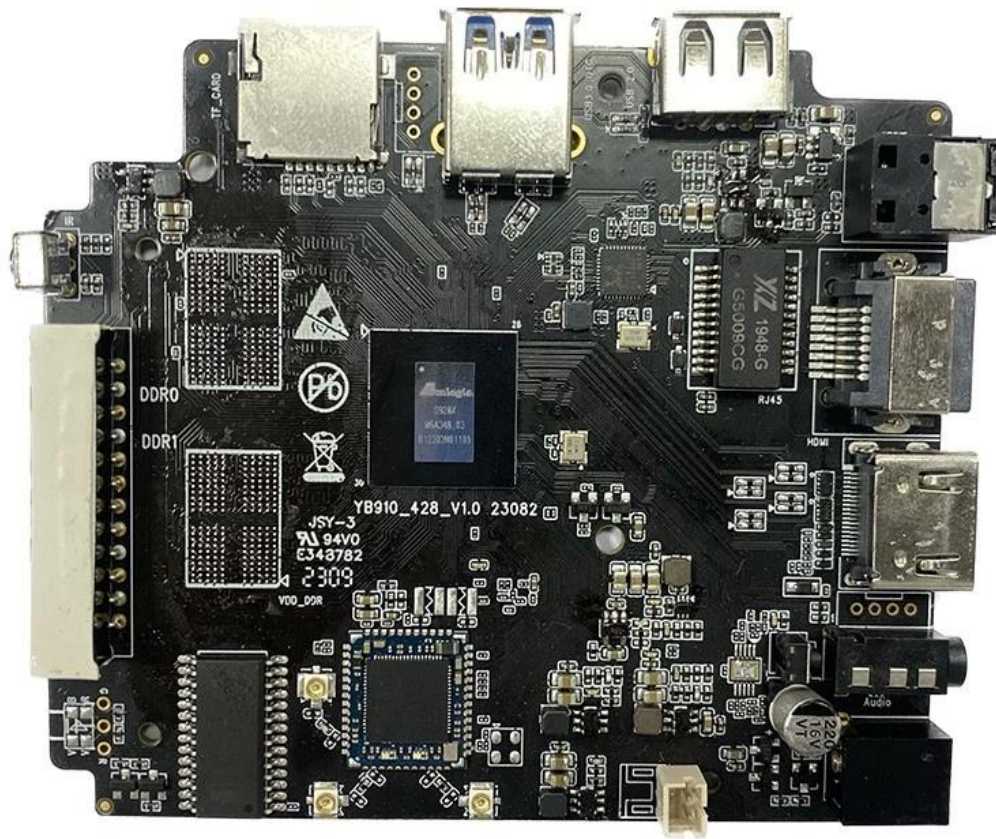
Specifications

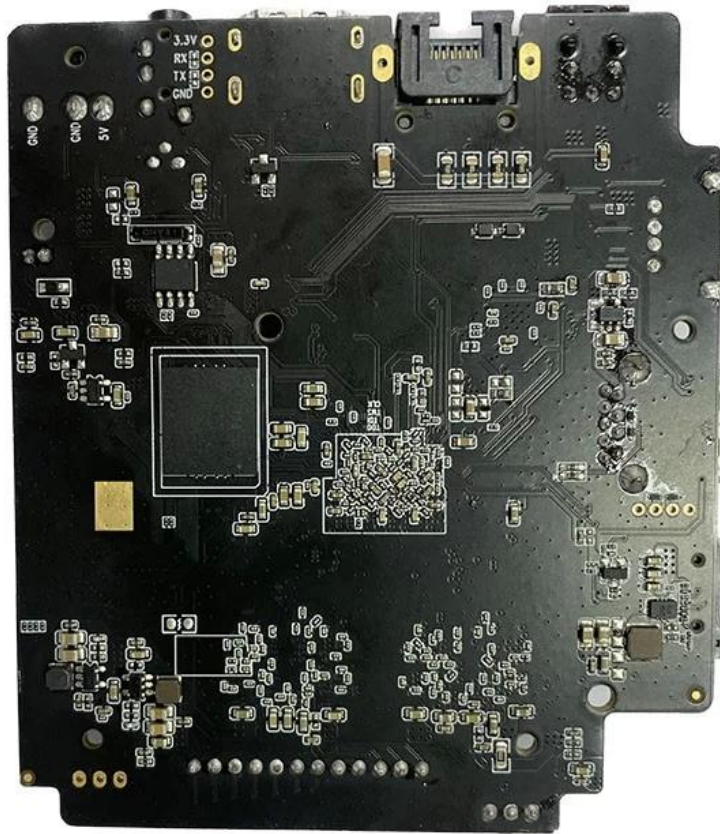
Model No.	Amlogic S928X-J Streaming Media Player Supplier
CPU	Amlogic S928X-J ARM Cortex-A76+Quad-Core ARM Cortex-A55
GPU	ARM Mali-G57 MC2, 4K GUI OpenGL ES 3.2, Vulkan 1.2 and OpenCL 2.0
NPU	3.2 TOPS
RAM	64-bit DDR4, LPDDR4/4X UP to 8GB DDR4266
eMMC	eMMC 5.1, SLC NAND Flash
	Amlogic Video Engine (AVE) with dedicated hardware decoders and encoders
	Decoding
	AV1 MP-10 @ L6.1 up to 8Kp60
	VP9 Profile-2 @ 6.1 up to 8Kp60
	H.265 HEVC MP-10 @ L6.1 up to 8Kp60
	AVS3 Phase 1 up to 8Kp60
	AVS2-P2 Profile up to 8Kp60
	H.264 AVC HP @ L5.2 up to 4Kp60
Decoding resolution	MPEG-4, WMV/VC-1, AVS, MPEG-2, MPEG-1 up to 1080p60
	MJPEG and JPEG unlimited pixel resolution decoding (ISO/IEC-10918)
	Support multi-video decoder up to 4x 4Kp60
	Encoding
	JPEG image encoding up to 4Kp60
	H.265 video encoding up to 4Kp60 with low latency
	H.264 video encoding up to 4Kp60 with low latency
	8th Generation Advanced Amlogic TruLife Image Engine with support for Dolby Vision (optional), HDR10+, HDR10, HLG, and HDR Vivid processing
AI accelerator	Up to 3.2 TOPS Neural Network Accelerator (NNA) with Tensor Processing Unit (TPU) architecture, supports TensorFlow and Caffe
Video output	HDMI 2.1a transmitter including both controller and PHY supporting CEC, Dynamic HDR, and HDCP 2.2/2.3, up to 8Kp60 max resolution output with support for eARC, VRR, QMS, QFT, ALLM, DSC & SBTM
	Support for MP3, AAC, WMA, RM, FLAC, Ogg Vorbis, Opus, SRS Truvolume, Dolby Audio (optional), DTS (optional), and programmable with 7.1/5.1 down-mixing
	Low-power VAD
Audio ouput	Built-in SPDIF input/output up to 192KHz 16/24/32bit stereo
	3x built-in TDM/PCM/I2S ports with TDM/PCM mode up to 48kHz x 32bits x 32ch or 192kHz x 16bits x 16ch and I2S mode up to 384kHz x 32bits x 16ch
	Digital microphone PDM input with programmable CIC, LPF, HPF, support up to 8 DMICs
	Built-in stereo audio DAC
Network interface	10/100/1000 MAC
USB2.0 interface	1x USB XHCI OTG 2.0, 2x USB 2.0 host, 1x USB 3.0 (5 Gbps) multiplexed with PCIe 2.0

S928X









Amlogic S928X-J is the first 8K UHD smart STB SoC integrating ARM Cortex-A76, ARM Cortex-A55 and self-developed neural network processor. It supports 8Kp60 video decoding function of global mainstream video formats—AV1, H.265, VP9, AVS3, AVS2, etc. Meanwhile, 4K GUI, intelligent SR and other functions are viable as well, thus providing an outstanding hardware engine for customized high-end applications.

As the demand for high-performance multimedia entertainment continues to rise, Amlogic has once again delivered an innovative solution with the launch of its latest S928X-J chip. Designed to deliver a seamless, immersive multimedia experience, the S928X-J chip boasts a range of impressive features that are sure to impress tech enthusiasts and consumers alike.

One of the key selling points of the S928X-J chip is its powerful processing capabilities. The chip is equipped with an eight-core ARM Cortex-A53 CPU, which provides lightning-fast speeds and delivers exceptional performance for a wide range of multimedia applications. Whether you're streaming 4K content, playing high-definition games, or running multiple apps at once, the S928X-J chip ensures that you enjoy a smooth and uninterrupted experience.

Another standout feature of the S928X-J chip is its support for high-quality audio and video output. The chip supports up to 4K resolution at 60 frames per second, which means that you can enjoy your favorite movies and TV shows with breathtaking clarity and detail. Additionally, the chip supports HDR10 and HLG technologies, which provide a wider color gamut and better contrast, making your viewing experience more immersive than ever before.

The S928X-J chip is also designed to deliver a high-quality gaming experience. The chip is equipped with a powerful Mali-G31 MP2 GPU, which provides exceptional graphics performance and supports OpenGL ES3.2, Vulkan 1.1, and OpenCL 2.0. This means that you can play the latest games with stunning graphics and enjoy smooth, lag-free gameplay.

In addition to its impressive hardware specs, the S928X-J chip also features advanced software optimizations that enhance its performance and usability. The chip is based on the Android TV 10 operating system, which provides a user-friendly interface and access to a wide range of apps and content. The chip also supports Google Assistant, which allows you to control your TV and other connected devices with your voice.

The S928X-J chip is also designed with connectivity in mind. The chip supports dual-band Wi-Fi and Bluetooth 5.0, which ensure fast and reliable wireless connectivity. It also features a range of ports, including HDMI, USB, and Ethernet, which provide flexible connectivity options for a wide range of devices and peripherals.

Overall, the Amlogic S928X-J chip is a game-changing solution for high-performance multimedia entertainment. Its powerful processing capabilities, support for high-quality audio and video output, and advanced software optimizations make it a standout choice for tech enthusiasts and consumers who demand the best in multimedia entertainment. Whether you're streaming your favorite content, playing games, or using your TV for other applications, the S928X-J chip ensures that you enjoy a seamless, immersive experience.

Welcome to our leading streaming media player supplier, where innovation meets affordability. Our factory-direct sales ensure that you get the best value for your money, with top-of-the-line Android TV boxes designed to elevate your home entertainment experience.

Key Features of Our Streaming Media Players:

1. **Advanced Android TV Integration:** Our devices come equipped with advanced Android TV integration, providing access to a wide range of streaming apps, games, and content through the Google Play Store.
2. **4K Ultra HD Streaming:** Enjoy crystal-clear 4K Ultra HD streaming for a cinematic viewing experience with vibrant colors, sharp details, and immersive audio quality.
3. **Seamless Connectivity:** Connect effortlessly to your home network with dual-band Wi-Fi support, ensuring fast and reliable streaming of your favorite content.
4. **Expandable Storage:** Store your favorite apps, games, and media files with ease thanks to expandable storage options, allowing you to customize your entertainment library to suit your

preferences.

5. **User-Friendly Interface:** Our streaming media players feature an intuitive user interface and easy setup process, making it simple for users of all ages to navigate and enjoy their favorite entertainment.
6. **Regular Software Updates:** Stay up-to-date with the latest features, security patches, and performance enhancements through regular software updates, ensuring a seamless and enjoyable user experience.

Why Choose Our Streaming Media Players:

1. **Premium Quality:** We prioritize quality and reliability in our products, ensuring that you get a premium entertainment experience with every use.
2. **Factory Direct Sales:** By purchasing directly from us, you benefit from competitive pricing and direct customer support, ensuring a hassle-free shopping experience.
3. **Cutting-Edge Technology:** Our devices are equipped with cutting-edge technology, including advanced processors, graphics capabilities, and connectivity options, to deliver the best performance possible.
4. **Customizable Options:** We offer a range of customizable options, allowing you to choose the features and specifications that best suit your needs and preferences.

Upgrade your home entertainment setup with our premium [streaming media players](#). With factory-direct sales and top-of-the-line features, you can enjoy a cinematic viewing experience, seamless connectivity, and hassle-free entertainment for the whole family. Contact us today to learn more about our products and elevate your entertainment to the next level!