

Android 9.0 eDP T972 Mainchip

Processor	T972
GPU	T972(T962X2) ARM Cortex A55 1.98GHZ
GPU	Penta Core ARM Mail-450
RAM	DDR4 2GB/4GB (LPDDR4)
Storage	16GB eMMC (Optional 128GB SD/USB)
OS	Android 9.0

CODEC Support

CODEC Support	<ul style="list-style-type: none"> - Amlogic Video Engine (AVE-10) 4Kx2K@75fps - VP9 2-10 8Kx4K@24fps 4Kx2K@60fps - H.265 HEVC MP-10@L5.1 8Kx4K@24fps 4Kx2K@60fps - AVS2-P2 4Kx2K@60fps - H.264 AVC HP@L5.1 4Kx2K@30fps - H.264 MVC 1080P@60fps - MPEG-4 ASP@L5 1080P@60fps (ISO-14496) - WMV/VC-1 SP/MP/AP 1080P@60fps - AVS-P16(AVS) /AVS-P2 JiZhun 1080P@60fps - MPEG-2 MP/HL 1080P@60fps (ISO-13818) - MPEG-1 MP/HL 1080P@60fps (ISO-11172) - 8/9/10 1080P@60fps - MJPEG JPEG (ISO/IEC-10918) - JPEG - *.mkv, *.wmv, *.mpg, *.mpeg, *.dat, *.avi, *.mov, *.iso, *.mp4, *.rm, *.jpg
---------------	---

CODEC Support	<ul style="list-style-type: none"> - VP9 2-10 8Kx4K@24fps 4Kx2K@60fps - H.265 HEVC MP-10@L5.1 8Kx4K@24fps 4Kx2K@60fps - AVS2-P2 4Kx2K@60fps - H.264 AVC HP@L5.1 4Kx2K@30fps - H.264 MVC 1080P@60fps - MPEG-4 ASP@L5 1080P@60fps (ISO-14496) - WMV/VC-1 SP/MP/AP 1080P@60fps - AVS-P16(AVS) /AVS-P2 JiZhun 1080P@60fps - MPEG-2 MP/HL 1080P@60fps (ISO-13818) - MPEG-1 MP/HL 1080P@60fps (ISO-11172) - 8/9/10 1080P@60fps - MJPEG JPEG (ISO/IEC-10918) - JPEG - *.mkv, *.wmv, *.mpg, *.mpeg, *.dat, *.avi, *.mov, *.iso, *.mp4, *.rm, *.jpg
---------------	--

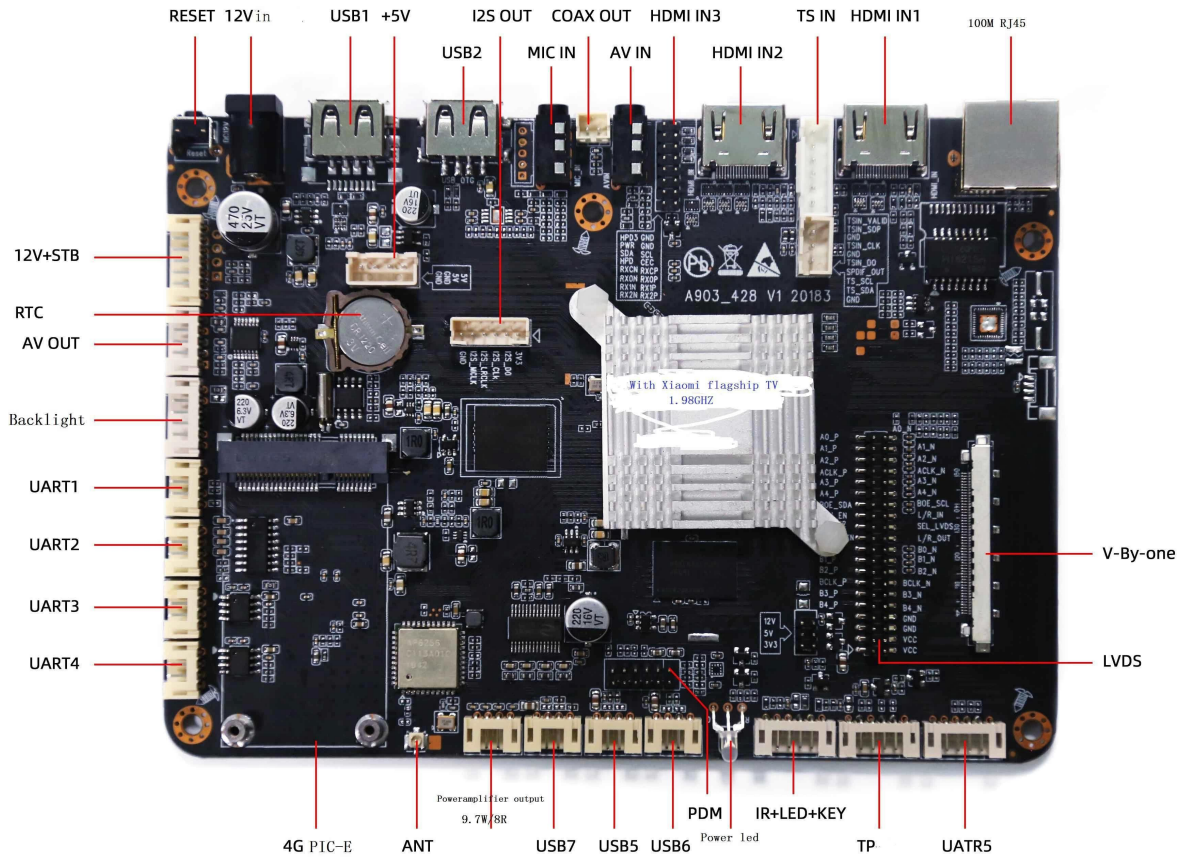
Audio Support	<p>MP3, AAC, WMA, RM, FLAC, Ogg, Dolby DTS Audio 7.1/5.1</p> <p>VAD AEC</p> <p>TDM/PCM/I2S 3 384kHz x32 x 8ch</p> <p>96kHz x 32 x 32ch I2S 384kHz x 32 x 8ch</p> <p>PDM CIC, LPF HPF</p> <p>DMIC 8</p> <p>SPDIF/IEC958</p> <p>L/R 2 L/R 2</p> <p>I2S PCM</p> <p>Audio EQ/DRC</p>
---------------	--

Video Support	<p>HD MPEG1/2/4, H.265/HEVC, HD AVC/VC-1, RM/RMVB, Xvid/DivX3/4/5/6, RealVideo8/9/10</p>
---------------	--

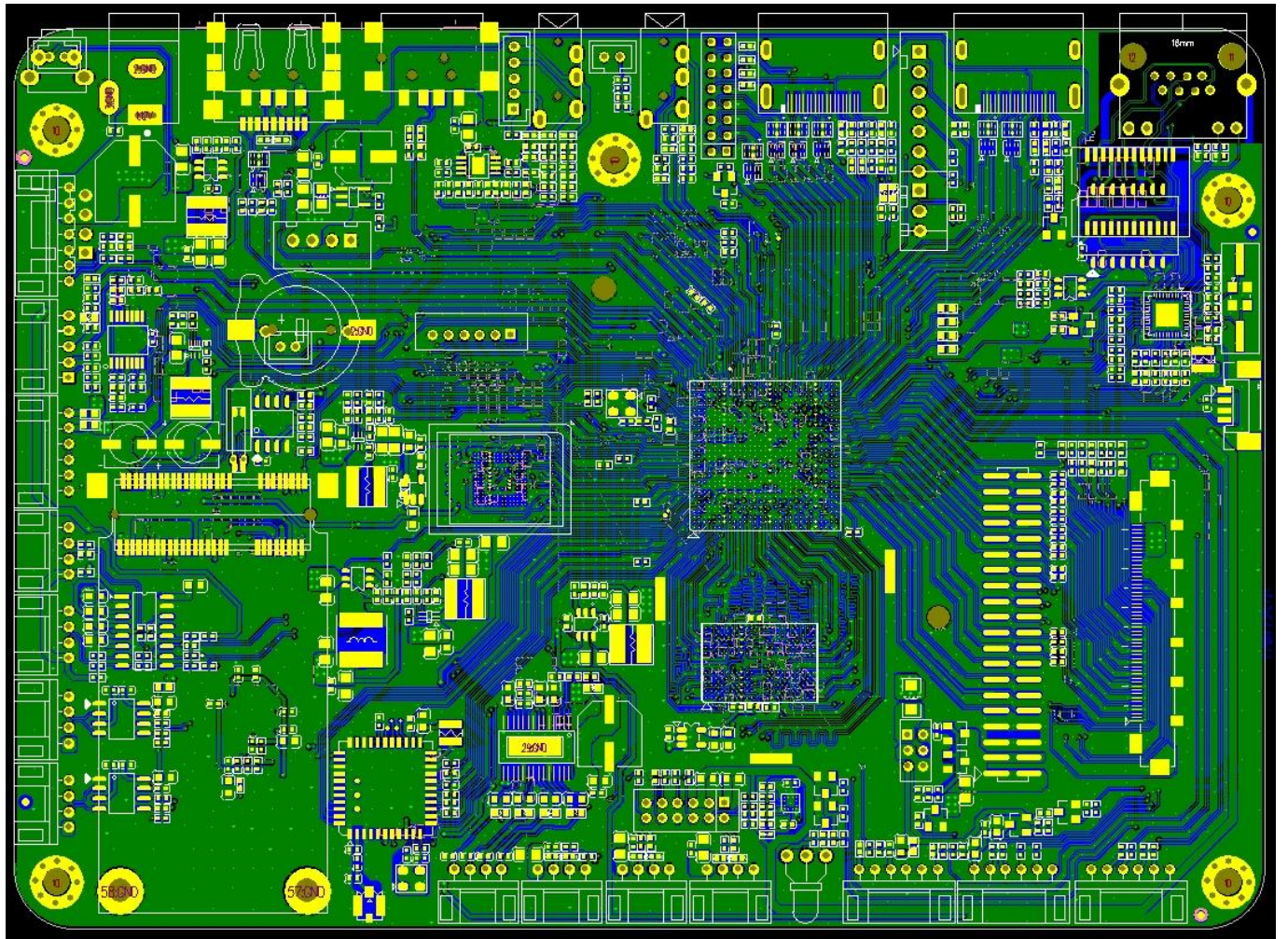
File Format Support	<p>Avi/Rm/Rmvb/Ts/Vob/Mkv/Mov/ISO/wmv/asf/flv/dat/mpg/mpeg</p> <p>MP3/WMA/AAC/WAV/OGG/DDP/TrueHD/HD/FLAC</p>
---------------------	--

HD JPEG/BMP/GIF/PNG/TIFF	
1*3.5	
1 * LVDS 40pin 2.0	8bit / 10bit
1 * V-By-one	
HDMI*3	
4 * 2.5	10W8Ω@2
*1 10M/100M RJ45	
2.4G WIFIBT	(WiFi 2.4G/5G)
PCIE(4)x1	
USB2.0	USB OTG * 1
	USB*4
	*2, 6
	*1, 7pin 2.0
	LED (4)
	*4
	*1
	*1
STB, 5VSB, 5V, 12V	2.00
	12V / 4pin 2.54

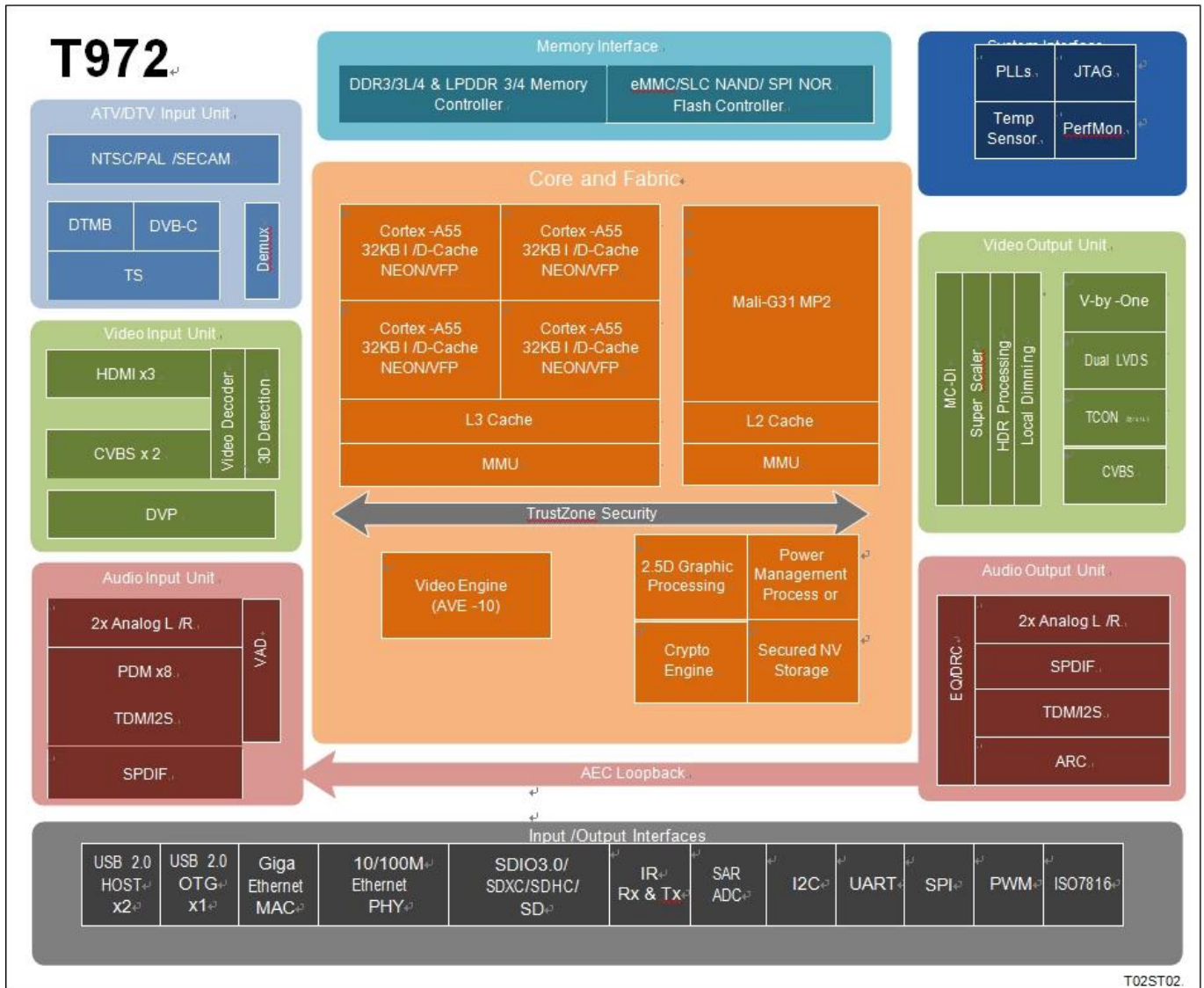
ONENUTS











T972 支持 4K/4K 超高清 (UHD TV) 视频播放，支持 HDR 视频播放，支持 CPU/GPU 加速，支持 CODEC 支持 8K/4K 视频播放，支持 CPU 加速，支持 CPU ARM Cortex-A55 quad-core 支持 L3 缓存，支持 CPU Cortex-A55 NEON SIMD 加速，支持 GPU ARM Mali-G31 MP2 支持 OpenGL ES 3.2, Vulkan 1.1 支持 OpenCL 2.0 支持 2.5D 图形处理，支持 CPU GPU 加速，支持 AEC Loopback，支持 Amlogic Video Engine (AVE-10) 支持 CPU Cortex-A55 CODEC AVE-10 支持 4K2K Trusted Video Path (TVP) 支持 DRM 支持 MVC, MPEG-1/2/4, VC-1/WMV, AVS, AVS2, RealVideo, MJPEG, H.264, H265-10, VP9-10 支持 JPEG 支持 HDR10, HDR10, HLG 支持 Technicolor Prime HDR, 支持 BT.2020/ BT.2100, 支持

Amlogic T972 3D graphics, 8K video, 120Hz refresh rate, HDR, P2P, 120Hz refresh rate, UHD, TCON, CEDS, CHPI, CMPI, iSP, HDMI 2.1, 3D graphics, CVBS, 2D graphics, HDMI, HDCP 1.4/2.2, HDR, 4K2K, Amlogic T972, ATV, NTSC, PAL, SECAM, DTV, DTMB, (TS) demux, DVB Common Descrambler 1.0, DES, Triple DES (TDES/3DES), AES, ISO7816, Amlogic T972, CPU, Voice Activity Detection (VAD), MIC, PDM, TDM, I2S, 8 channels, Amlogic T972 SoC, 10/100/1000M Ethernet MAC, RGMII, 10/100M Ethernet PHY, USB 2.0, SDIO 3.0, eMMC 5.0, SLC NAND, SDIO, /SD, UART, I2C, SPI PWM, IR Blaster, QoS, DRAM, SecureOS, Linux, GNU/GCC Android tool chain, AMLOGIC

ARM Cortex-A55, ARMv8.2, L3, TrustZone, QoS, CoreSight

3, ARM Mali-G31 MP2, 4, 2x 4 (EE), OpenGL ES 3.2, Vulkan 1.1, OpenCL 2.0

2.5D, bitblt, (ROP), 4:2:0, 4:2:2, 4:4:4, (8/16/24/32)

XXXXXXXXXXXXXXXXXXXXXXXXXXXXXXXXXXXX
XXXXXXXXXXXXXXXXXXXXXXXXXXXXXXXXXXXX

XXXXXXXXXXXXXXXXXXXXXXXXXXXX

XXXXXXXXXXXX AES XXXXXXXXXXXXXXX 128/256 XXX XXXXXXXXXXXXXXXXXXXXXXX 16 XXX XXXXXXXXXXXXXXXXXXXXXXX ECB, CBC XXX
CTR

XXXXXXXXXXXX DES/3DES XXXXXXXXXXXXXXX ECB XXX CBC XXXXXXXXXXXXXXX 64 XXXXXXXXXXXXXXX DES XXXXXXXXXXXXXXX 192
XXXXXXXXXXXX 3DES

XX
XX (TRNG) XXXXXXXXXXXXXXX SHA-1/SHA-2

CODEC XXXXXXXX/XXXXXXXX

Amlogic Video Engine (AVE-10) XXX 4Kx2K@75fps

XXXXXXXXXXXXXXXXXXXXXXXXXXXX/XXXXXXXX

XXXXXXXXXXXX VP9 2-10 XXXXXXXXXXXXXXX 8Kx4K@24fps XXXXXXX 4Kx2K@60fps

H.265 HEVC MP-10@L5.1 XXXXXXXXXXXXXXX 8Kx4K@24fps XXXXXXX 4Kx2K@60fps

XXXXXXXXXXXX AVS2-P2 XXXXXXXXXXXXXXX 4Kx2K@60fps

H.264 AVC HP@L5.1 XXXXXXXXXXXXXXX 4Kx2K@30fps

H.264 MVC XXXXXXXXXXXXXXX 1080P@60fps

MPEG-4 ASP@L5 XXXXXXXXXXXXXXX 1080P@60fps (ISO-14496)

WMV/VC-1 SP/MP/AP XXXXXXXXXXXXXXX 1080P@60fps

AVS-P16(AVS) /AVS-P2 XXXXXXXXXXXXXXX JiZhun XXXXXXXXXXXXXXX 1080P@60fps

MPEG-2 MP/HL XXXXXXXXXXXXXXX 1080P@60fps (ISO-13818)

MPEG-1 MP/HL XXXXXXXXXXXXXXX 1080P@60fps (ISO-11172)

RealVideo 8/9/10 XXXXXXXXXXXXXXX 1080P@60fps

XX

MJPEG XXX JPEG XXX (ISO/IEC-10918)

XXXXXXXXXXXXXXXXXXXXXXXXXXXX JPEG XXXXXXXXXXXXXXXXXXXXXXX XXXXXXXXXXXXXXX XXX

XXXXXXXXXXXXXXXXXXXXXXXXXXXX *.mkv,*.wmv,*.mpg, *.mpeg, *.dat, *.avi, *.mov, *.iso, *.mp4, *.rm XXX *jpg

XXXXXXXXXXXXXXXXXXXX **Amlogic TruLife** XXXXXXXXXXXXXXXXXXXXXXX **9**

XXXXXXXXXXXX HDR10/10, HLG, Technicolor Prime HDR

XX 3D

XXXXXXXXXXXXXXXXXXXXXXXXXXXX

XXXXXXXXXXXXXXXXXXXXXXXXXXXX, XXXXXXXXXXXXXXX, XXXXXXXXXXXXXXXXXXXXXXXXXXXXXXX, XXXXXXXXXXXXXXXXXXXXXXXXXXXXXXXXXXXXXXX

XX

XX

3:2/2:2 XXXXXXXXXXXXXXXXXXXXXXX XXX (VOF)

XX SuperScaler XXXXXXXXXXXXXXXXXXXXXXXXXXXXXXX, XXXXXXXXXXXXXXXXXXXXXXX, LTI, CTI,

XXXXXXXXXXXXXXXXXXXX, XXXXXXXXXXXXXXX

XX

3D LUT XXXXXXXXXXXXXXX 17x17x17 XXX 4913 XXX

XX

XX HSL XXX

XXXXXXXXXXXXXXXXXXXX/XXXXXXXX/XX/XXXXXXXX

XXXXXXXXXXXXXXXXXXXXXXXXXXXX XXX

XXXXXXXXXXXXXXXXXXXX: XXXXXXXXXXXXXXX 2 XXXXXXXXXXXXXXXXXXXXXXXXXXXXXXX 2 XXX

XXXXXXXXXXXXXXXXXXXX HDR XXX

XX

XXXXXXXXXXXXXXXXXXXX **LCD**

Video V-By-One 8 bit 1, 2, 4 channel 4Kx2K 60Hz
LVDS 1920x1080 60Hz
mini-LVDS (1 channel 6 bit)/(2 channel 3 bit) HD/FHD 1920x1080Hz
CEDS/CHPI/CMPI/iSP 12 bit UHD TCON 4Kx2K 60Hz
3 channel LCD
Dithering LCD

3x HDMI 2.1 Dynamic HDR, ARC, HDCP 1.4 /2.2, 4Kx2K@60
2x CVBS 480i/576i
CVBS (PAL/NTSC)
ITU 601/656 RGB565 8 bit, CCIR656, CCIR601, YUV422, YCbCr422

MP3, AAC, WMA, RM, FLAC, Ogg, Dolby DTS Audio
7.1/5.1
VAD AEC
TDM/PCM/I2S 3 channel TDM/PCM 384kHz x32bit x 8ch
96kHz x 32bit x 32ch I2S 384kHz x 32bit x 8ch
PDM CIC, LPF HPF DMIC
8 channel
SPDIF/IEC958
L/R 2 channel L/R 2 channel
I2S PCM
Audio EQ/DRC

NTSC, NTSC-J, PAL-BG, PAL-DK1, PAL-I, PAL-DK, PAL-M, PAL-N, SE- CAM-DK2,
SECAM-DK3, SECAM-L ATV
BTSC, A2, EIA-J NICAM
V-chip
DTMB/DVB-C/ DTV
Build-in VIF demodulator IF

DTV
3x Transport stream (TS) demux
PWM, I2C SPI
ISO 7816

DRAM 32 bit 4GB
JEDEC DDR3-2133 /DDR3L-2133 /DDR4-2666 /LPDDR3-2133
/LPDDR4-3200 SDRAM
SDSC/SDHC/SDXC SDIO 1 channel 4 bit
2.x/3.x/4.x DS/HS UHS-I SDR104
eMMC 1/4/8 bit
5.0 HS400

Supports SLC NAND
Supports OTP 4K

Supports IEEE 802.3 10/100/1000M Ethernet MAC, RGMII PHY, 10/100M PHY, WiFi/IEEE802.11, USB, SDIO, Bluetooth, USB, UART, WiFi, BT

I/O supports USB I/O (USB 2.0, USB OTG), UART, I2C, PWMs, SPI, IR-blaster, SAR ADC 10-bit, 4 channels, IO, DMA, 24 MHz, ICE/JTAG

Supports CPU, DRAM, PLL, I/O (1.8V, 3.3V)

Supports (TEE), Trustzone, OTP, DRAM, RNG, Trusted Video Path (TVP), SecureOS, IO

FCBGA, 19 x 19 mm, 0.65 mm, RoHS

Supports All-in-One Android 9.0, Amlogic T972, eDP

Supports Amlogic T972 Mainchip, Quad-Core GPU

.....

Android 9.0
.....
Google Play Store
.....
.....

eDP
.....
LCD, LED OLED eDP
.....
4K Ultra HD
.....
.....

.....
.....
Wi-Fi
.....
USB HDMI
.....
.....

.....
.....
over-the-air
.....
.....

All-in-One Android 9.0 Amlogic T972
eDP
.....
.....
.....
.....