

MXQ2 TV Box Amlogic S805 Quad Core Cortex-A5 H.265 MXQ2 Android 4.4 TV Box MXQ2



MXQ2 TV Box Specifications

Model	MXQ2
Processor	Amlogic S805 Quad Core Cortex-A5@1.5GHz
GPU	PowerVR G6200™ -450@600MHz
Storage	NAND Flash 8GB
SDRAM	1GB DDR3

MXQ2 TV Box Power & LED

Power Input	5V/2A
LED Indicator (LED)	Power: Red; Status: Green

MXQ2 TV Box Software

Operating System	Android™ 4.4
3D Support	Hardware 3D Acceleration
Video Support	HD MPEG1/2/4, H.265 , HD H.264, RM/RMVB, Xvid/DivX3/4/5/6, RealVideo8/9/10
Audio Support	Avi/Rm/RmVb/Ts/Vob/Mkv/Mov/ISO/wmv/asf/flv/dat/mpg/mpeg
Image Support	MP3/WMA/AAC/WAV/OGG/AC3/DDP/TrueHD/DTS/DTS/HD/FLAC/MP3
Image Support	HD JPEG/BMP/GIF/PNG/TIFF
USB	2 USB 2.0 Ports, Support U Disk and USB HDD
Storage	Support TF
HDD	FAT16/FAT32/NTFS
Subtitles	Sub/SMI/SSA/IDX/USB
Resolution	SD/HD Resolution 1920x1080
OSD	Language / Region / Time / Brightness / Contrast / Color / OSD
Network	Support 10/100M, RJ-45
Warranty	1 Year

Bluetooth™

Bluetooth™ 4.0

Wi-Fi/Bluetooth

USB 2.4GHz Bluetooth USB 2.4GHz

HDMI™

HDMI™ 1.4b CEC

AV

3D

SPDIF/IEC958

Android™

XBMC, Skype, Picasa, Youtube, Flickr, Facebook, etc.

XBMC, Skype, Picasa, Youtube, Flickr, Facebook, etc.

Android™

Android™



Picture Show





- Black color: available now and enough stocks
- Red/Grey/Blue colors: **OEM**






27°C 上海

10:32 Wednesday, Sep 10



Online Video



My recommend



Setting



My Apps



Music



Local



 AppInsta...	 Browser	 Calculator	 Clock	 Downloa...	 Email
 Facebook	 FileBrow...	 Gallery	 Google S...	 Media C...	 Miracast
 MoviePI...	 Music	 Netflix	 People	 Play Store	 PPPoE
 QQ	 screens...	 Search	 Settings...	 Skype	 Twitter
 UPDATE...	 XBMC	 YouTube			



Root Checker

Device: MXQ
Android: 4.4.2 | API: 19

Check Now

Status: Rooted

Id: uid=0(root) gid=0(root)

Superuser: Not found

Busybox: /system/xbin/busybox

Su Location: /system/xbin/su

Sudo Location: Not found

Environment Vars.:
/sbin/
/vendor/bin/
/system/sbin/
/system/bin/
/system/xbin/

CPU-Z CPU-Z SOC SYSTEM BATTERY SENSORS ABOUT CPU-Z SOC SYSTEM BATTERY SENSORS ABOUT

Model	MXQ(MXQ)
Manufacturer	MBX
Board	MXQ
Display	KOT49H.20140903 test-keys
Hardware	amlogic
Android Version	4.4.2
Kernel Architecture	armv7l
Kernel Version	3.10.33 (20140903)
Screen Resolution	1920 x 1008
Screen Density	240 dpi
Total RAM	825 MB
Available RAM	244 MB (29%)
Internal Storage	5.26 GB
Available Storage	4.98 GB (94%)
Root Access	Yes

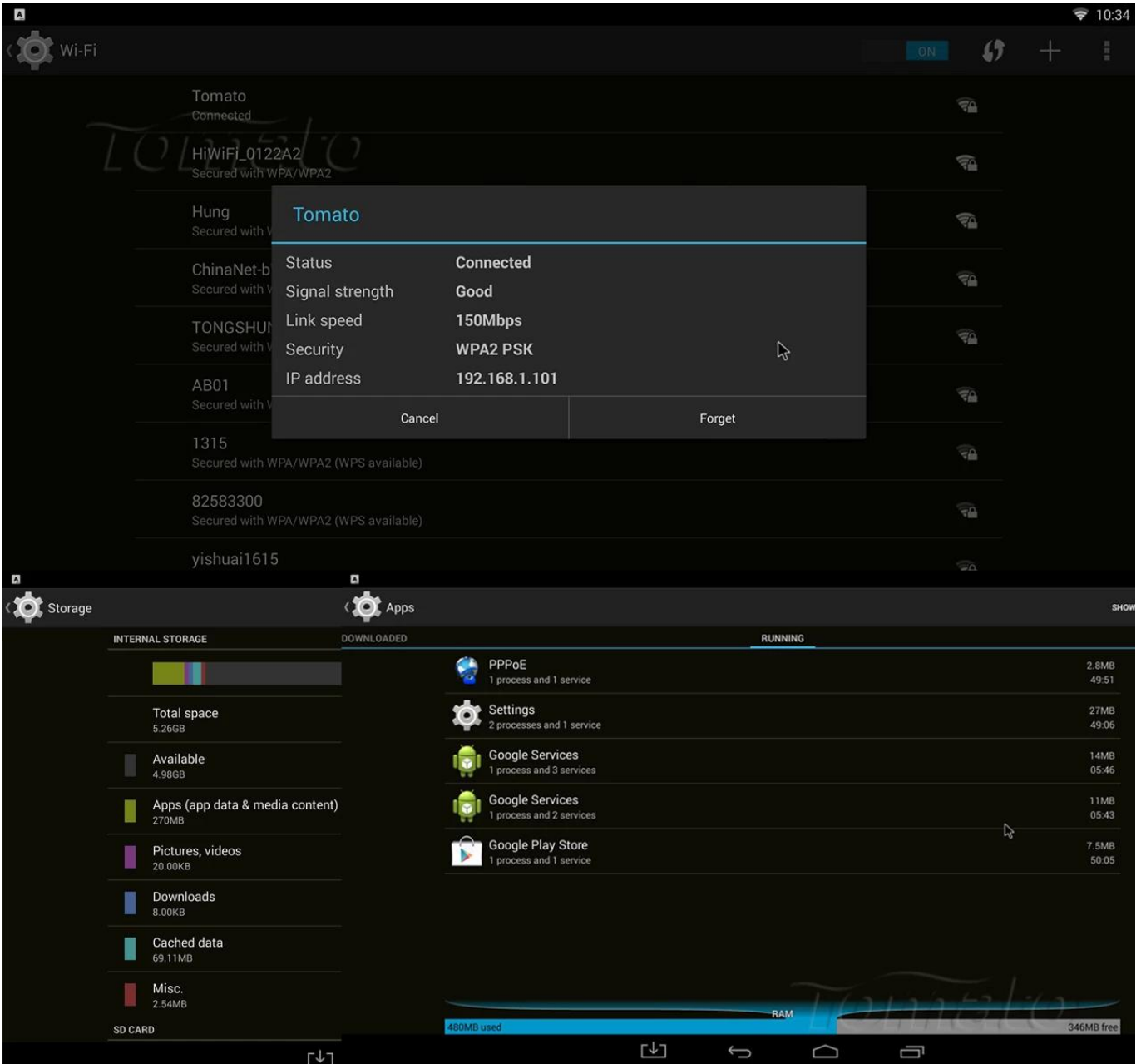
Cortex ARM Cortex-A5
Intelligent Processors by ARM®
1.49 GHz

CPU Architecture	ARM Cortex-A5
Cores	4
Revision	r0p1
Clock Speed	24 MHz - 1.49 GHz
Core 0	1488 MHz
Core 1	1488 MHz
Core 2	1488 MHz
Core 3	1488 MHz
CPU Load	11 %
GPU Vendor	ARM
GPU Renderer	Mali-450 MP

 Language

Afrikaans	Español (España)	Slovenčina	Српски	فارسی	
Bahasa Indonesia	Español (Estados Unidos)	Magyar	Slovenščina	Українська	አማርኛ
Bahasa Melayu	Filipino	Nederlands	Suomi	עברית	हिन्दी
Català	Français	Norsk bokmål	Svenska	العربية	ไทย
Čeština	Hrvatski	Polski	Tiếng Việt	فارسی	한국어
Dansk	IsiZulu	Português (Brasil)	Türkçe	አማርኛ	中文 (简体)
Deutsch	Italiano	Português (Portugal)	Ελληνικά	हिन्दी	中文 (繁體)
English (United Kingdom)	Kiswahili	Română	Български	ไทย	日本語
English (United States)	Latviešu	Rumantsch	Русский	한국어	





SETTINGS



Network



Display



Advanced



Other



Miracast

Remote Control

OFF

CEC Control

Location

Shanghai

Shanghai

Application request to change orientation



Keep landscape mode on home screen



Digital audio auto-detection

OFF

Digital Audio Output

PCM



About MediaBox

10:33

System updates

Status

Status of network and other information

Legal information

Model number

hd18q

Android version

4.4.2

Kernel version

3.10.33

tao.jiang@wyst #10

Wed Sep 3 10:13:24 CST 2014

Build number

KOT49H.20140903 test-keys

Ethernet Infor

IP address,DNS,MAC address,etc.