

Quad Core S905 1G RAM 8 G Android 5.1 Amlogic S905 64 -A53 2.0 GHz G9C

Amlogic S905 Quad Core WiFi Device Smart Box Watch TV Channels Through Wifi or Internet



Amlogic S905 Quad Core WiFi Device Smart Box	
Model	G9C
CPU	Amlogic S905 ARM Cortex™-A53 CPU 2.0 GHz (DVFS)
GPU	450 MHz Mali-450 GPU 750 Mhz +
Storage	8GB EMMC
SDRAM	1GB DDR3
Power & LED	
Power	DC 5V/2A
LED	Power: Red, Standby: Green
OS & Software	
OS	Android™ 5.1 Lollipop
Resolution	3D HD 1080Px2
Video Support	HD MPEG1/2/4, H.264/ H.265 HD AVC/VC-1, RM/RMVB, Xvid/DivX3/4/5/6 RealVideo8/9/10, HEVC MP-10
Audio Support	Avi/Rm/Rm vb/Ts/Vob/Mkv/Mov/ISO/Wmv/Asf/Flv/Dat/Mpg/Mpeg /MP4
Audio Format	MP3/WMA/AAC/WAV/OGG/AC3/DDP/TrueHD/DTS/DTS/HD/FLAC/AAC
Image Format	HD JPEG/BMP/GIF/PNG/TIFF
USB	2 USB 2.0 ports, USB HDD
Storage	SD™ / SDHC/MMC
HDD	FAT16/FAT32/NTFS
Remote	SRT/SMI/SSA/IDX + USB
Video Output	SD/HD/4K2K, HD
OSD	On-Screen Display
LAN	1000M RJ-45 (IEEE 802.3 10/100/1000)
Wireless	IEEE802.11 b/g/n Bluetooth™ 4.1EDR
USB	USB 2.4GHz, USB 2.4GHz
HDMI™	HDMI™ 2.0 (CEC, HDCP 2.2), 4 K X 2 K @60 fps
AV	AV
3G	3G
SPDIF/IEC958	SPDIF/IEC958
IPTV	IPTV, OTT
Features	
Features	Miracast, Airplay, Skype, Youtube, Picasa, Facebook

升級指南：

Android 11 升級指南 提供了有關如何升級您的 Android 設備的詳細信息。請按照以下步驟操作，以確保您的設備順利升級到 Android 11。升級前請備份您的數據，並確保您的設備已連接到互聯網。升級過程中，您的設備將需要重新開機，並可能需要一段時間才能完成升級。升級後，您的設備將自動安裝 Android 11 系統。如果您遇到任何問題，請聯繫您的設備製造商或 Google 支持中心。

升級前：

- 1 * 備份您的數據
- 1 * 連接 HDMI
- 1 * 連接互聯網
- 1 * 連接電源



Picture Show



Indicator Light Port





Micro SD Card

USB

USB



AV Port

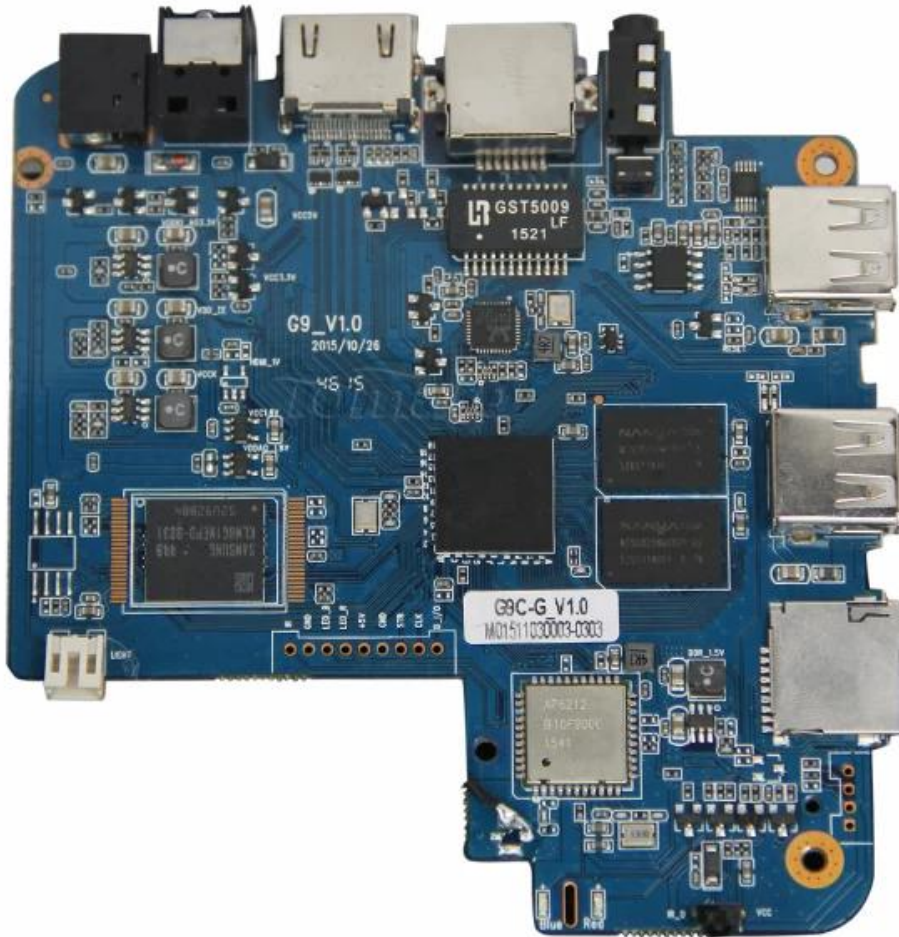
RJ 45 ETHERNET

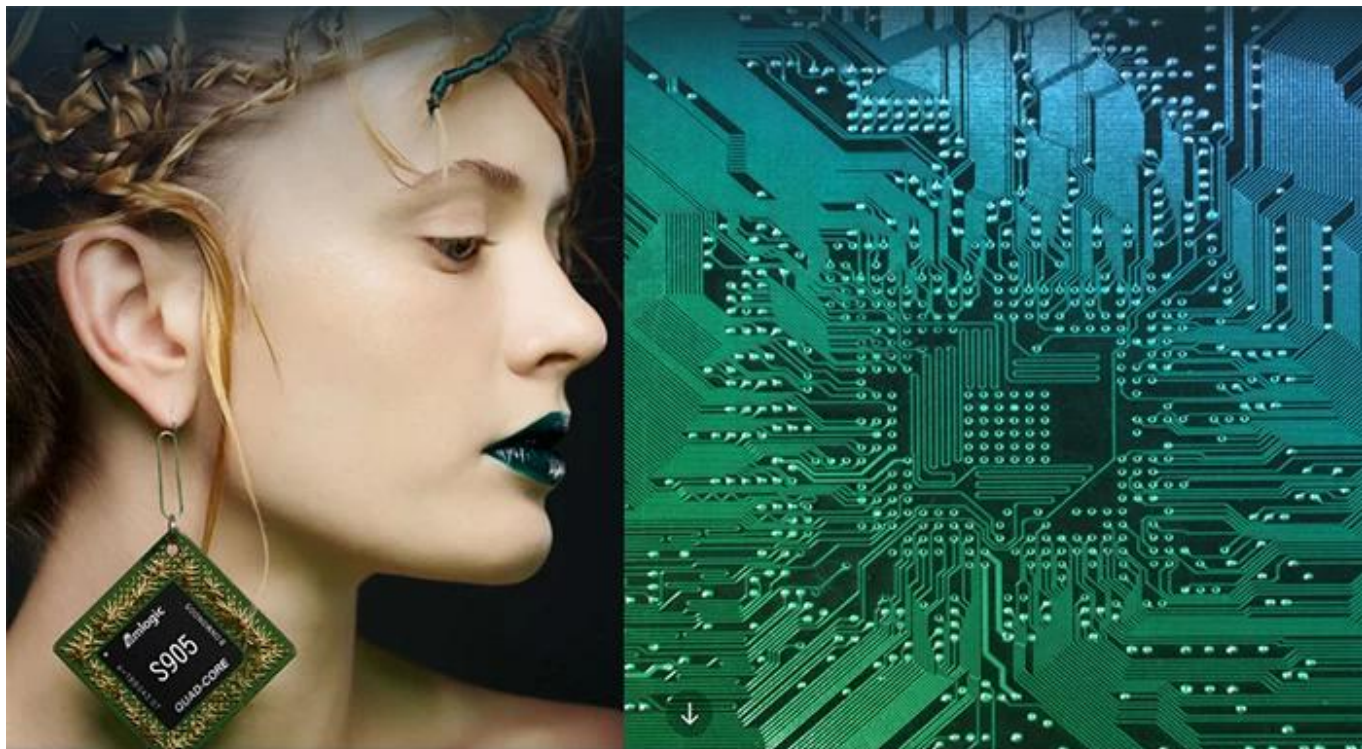
HDMI™

Optical Port

Power Port







S905

64-Bit
Quad Core
Cortex A53

4K

H.265
@60fps

HDMI 2.0
HDCP 2.2

TSMC
28NM

DRM



64 bit CPU,

While maintaining the same power consumption, the computing power of CPU has also been greatly improved.

With 4K2K decoding capabilities,
it make 4K become the standard.



The color quantity is increase by 60 times more than the previous generation.



10 bit decoding, it could highest support 1.07 billion color, Compared to the previous generation of 16.7 million colors, it increase by 60 times.

The sound upgrade,
while supporting Dolby Digital Plus and DTS.



3 + 2 core high-frequency GPU,
it make the TV turn into the PlayStation.



The single core CPU frequency increase of 25%, 5-core computing speed can be achieved by the previous generation 8-core, it allowing you to experience smooth gaming.

Support 802.11ac WiFi protocol.

200 Mbps
实际速率

120 Mbps
上一代实际速率



Wireless projection the image&video
of the phone/computer onto the TV.



Miracast



Airplay



DLNA



SMB
共享协议



Intel@WIDI

Equipped with smart contiguous
memory allocation technology,
make the system running more smoothly.



4.1



Bluetooth[®]



HD2.0
Image output



HD1.0
Image output

Home entertainment, perfect enjoyment

- Extreme graphics, HD2.0 Image output
 - 1000M Ethernet LAN
-



Unforgettable visual
experience.

1920 * 1080 HD



Support 3D



1080P



Ultra Wide Vision

It's all about speeding up.



1G DDR3 dual channel memory and 8GB eMMC high speed flash memory.

The dual channel memory runs 1080p HD videos and large games flawlessly,
while the eMMC high speed flash memory controls apps, games, and multi-media storage with ease.

Everything comes alive with 3D.



Experience home entertainment in 3D!



S905

One of industry's first multimedia SoCs with 64-bit architecture, S905 is designed to deliver immersive theatre-level home entertainment to the users with excellent audio and video processing capabilities. It also supports operator-level security and is a perfect choice for OTT/IPTV/DVB STB, TV dongle and smart home applications.