

Support Gigabit Ethernet, 10G Ethernet, 100G Ethernet, 40G Ethernet, 25G Ethernet, 10G Ethernet, 10G Ethernet, 10G Ethernet.

Support

o Support Amlogic 64-bit ARM® Cortex™ A73, ARM® Cortex™ A53

o Support ARM Mali-G52 MP4

o Support HW UHD 4K@60fps, 75 1080, 10-bit, H.265/H.264 60fps encoder

o Support Dolby Vision, HDR10, HDR10+, HLG, PRIME HDR

o Support Cortex-M4

o Support TrustZone, DRM

o Support WIFI, BT, USB, SD, Ethernet

o Support

Amlogic S922X supports Android OTT/IPTV Set Top Box (STB), CODEC 4, HDR, etc.

Support Big, ARM Cortex-A73, Cortex-A53, L2, NEON, SIMD

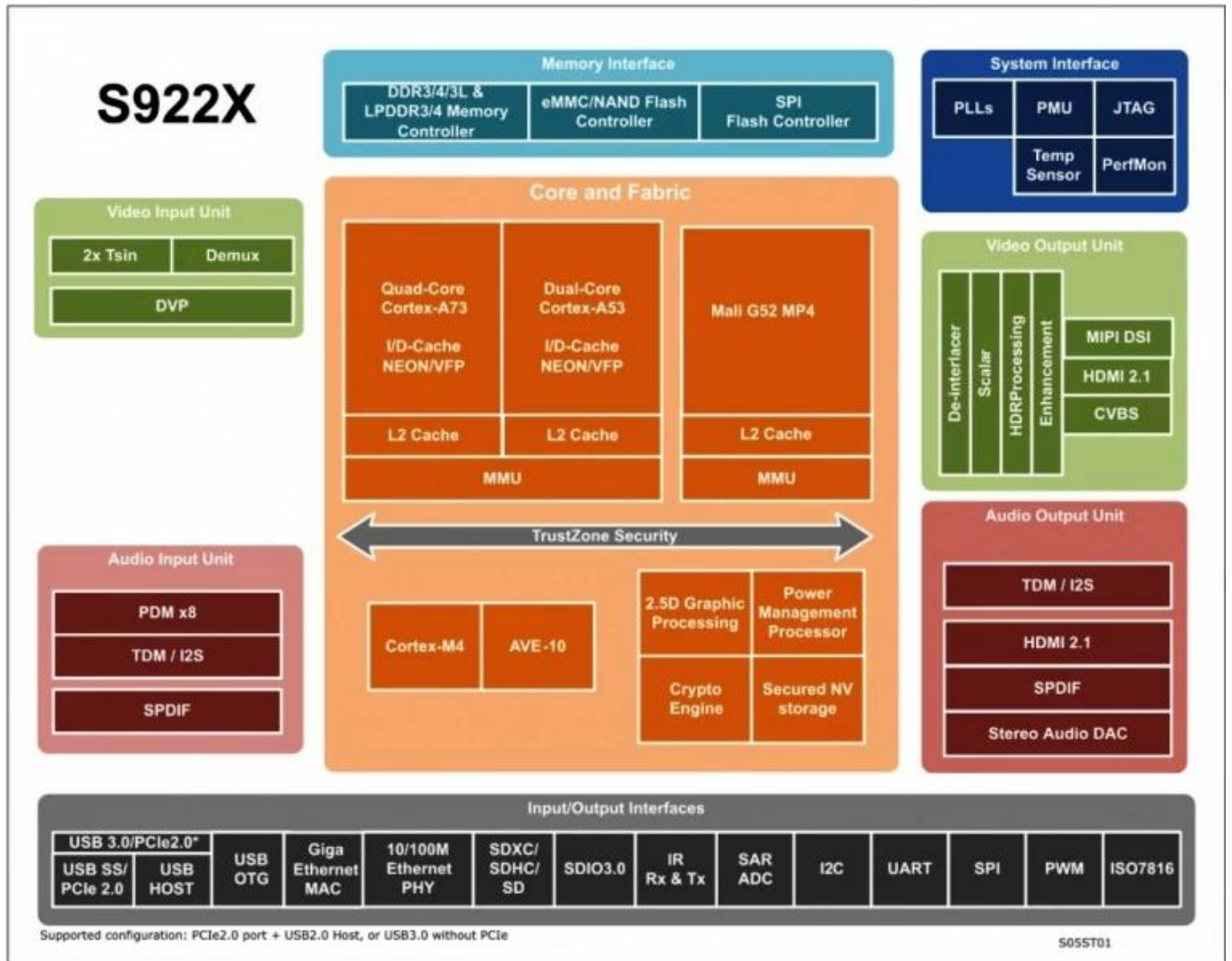
Support ARM Mali-G52 MP4, OpenGL ES 3.2, Vulkan 1.0, OpenCL 2.0, 2.5, D, etc.

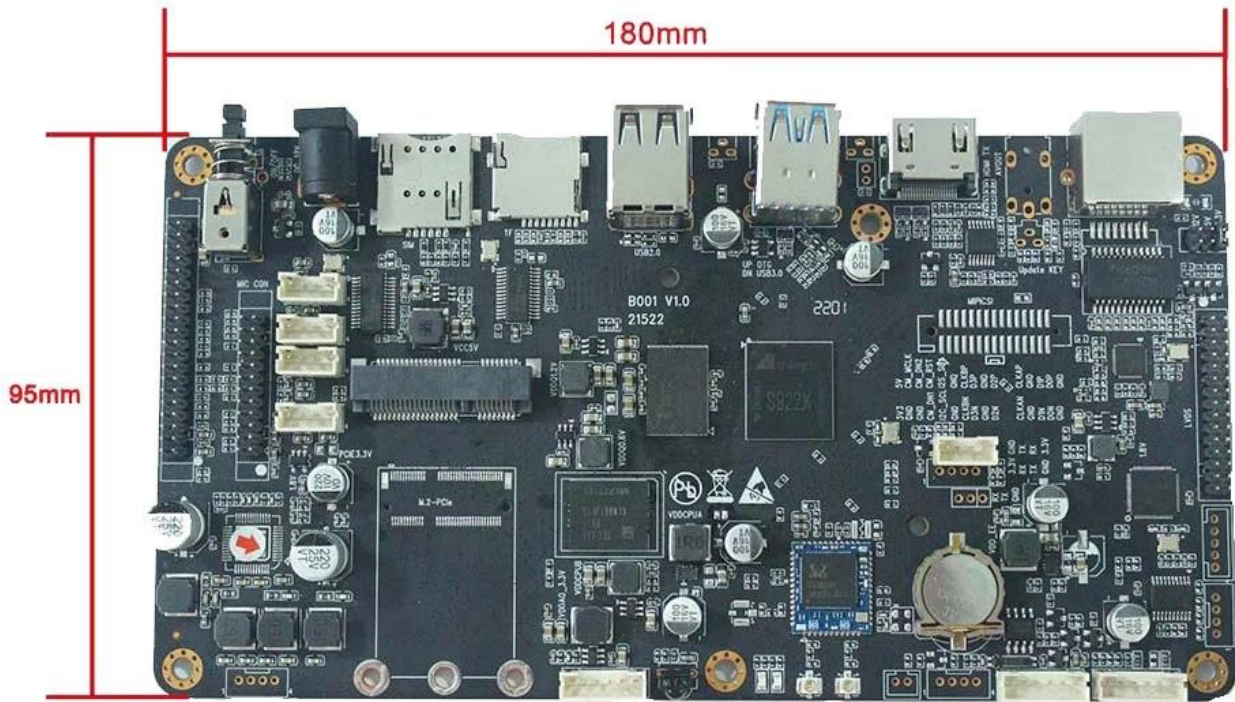
Support Amlogic (AVE-10), Cortex-A53, CODEC, AVE-10, 4, Kx2K, 75 (TVP), MVC, MPEG-1/2/4, VC-1/WMV, AVS, AVS2, RealVideo, MJPEG, H.264, H265-10, VP9, JPEG, H.265/H.264 60, 1080

Support Amlogic S922X, HDMI2.1, 3, D, Dynamic HDR, CEC, HDCP 2.2, DAC, CVBS, MIPI, DSI, 4, TDM, PCM, I2S, SPDIF, PDM, DMIC, 8, DVP

Amlogic S922X 10/100/1000 Ethernet MAC RGMII 10/100M Ethernet PHY USB XHCI OTG 2.0 USB3.0 PCIe demuxcan .

10/100/1000 Ethernet MAC RGMII 10/100M Ethernet PHY USB XHCI OTG 2.0 USB3.0 PCIe





180mm*95mm*20mm

- 1 通道 AV
- 1 通道 I2C
- I2SC/IS2B
- 3 通道 25 帧/秒 1 通道 25 帧/秒
- 通道 (2)
- 4 通道 -G 通道 (3)
- 通道 -
- 通道 - U 通道
- 通道

通道

- (1) ARM Cortex-A73
- (2) ARMv8-A Neon Crypto
- (3) L2
- (4) Cortex-M4 TrustZone
- (6)

- (1) ARM Mali-G52 MP4 (4ppc).
- (2) 8 2 x 6 x 8 (EE)
- (3)
- (4) OpenGL ES3.2 Vulkan 1.0 OpenCL 2.0

通道/通道

- (1) Amlogic (AVE) 4 (2)Kx2K@60fps1x1080P@60fps
- (3) " " (4)
- VP9-2 4 Kx2K@60
- H.265 HEVCMP-10@L5.1upto 4Kx2K@60fps
- AVS2-P2 4 Kx2K@60
- H.264 AVCHP@L5.1 4 Kx2K@30
- H.264 MVC 1080 P@60
- MPEG-4 ASP@L5 1080 P@60 (ISO-14496)
- WMV/VC-1 SP/MP/AP 1080 P@60
- AVS-P16(AVS) /AVS-P2 JiZhun 1080 P@60
- MPEG-2 MP/HL 1080 P@60 (ISO-13818)
- MPEG-1MP/HLupto1080P 60 (ISO-11172)
- RealVideo 8/9/10 1080 P@60
- MJPEG JPEG (ISO/IEC-10918)
- *.mkv*.wmv*.mpg *.mpeg *.dat *.avi*.mov *.iso*.mp4 *.rm *.jpg
- (5) JPEG H.265/H.264 H.265/H.264 1080 P@60fps

通道

- (1) HDMI 2.1 PHY CEC Dynamic HDR HDCP 2.2 4Kx2K@60

SD/HD/FHD 480 : 576i/p 720p 1080i/p 4Kx2K

(3) SD/HD/FHD 480 : 576i/p 720p 1080i/p 4Kx2K

(4) MIPI DSI 1080*1920 4

ARM Cortex-A53

ARM Cortex-A53

(7) ARM Cortex-A73 ARM Cortex-A53

(8) ARMv8-A

(9) L2

(10) Cortex-M4

(11) TrustZone

(12)

ARM Mali-G52 MP4 (4ppc).

(5) ARM Mali-G52 MP4 (4ppc).

(6) 8 2 x8 (EE)

(7) OpenGL ES3.2 Vulkan 1.0 OpenCL 2.0

(8) OpenGL ES3.2 Vulkan 1.0 OpenCL 2.0

Amlogic (AVE)

(6) Amlogic (AVE)

4 (7)Kx2K@60fps1x1080P@60fps

(8) "H.265 HEVCMP-10@L5.1upto 4Kx2K@60fps"

(9)

VP9-2 4 Kx2K@60

H.265 HEVCMP-10@L5.1upto 4Kx2K@60fps

AVS2-P2 4 Kx2K@60

H.264 AVCHP@L5.1 4 Kx2K@30

H.264 MVC 1080 P@60

MPEG-4 ASP@L5 1080 P@60 (ISO-14496)

WMV/VC-1 SP/MP/AP 1080 P@60

AVS-P16(AVS) /AVS-P2 JiZhun 1080 P@60

MPEG-2 MP/HL 1080 P@60 (ISO-13818)

MPEG-1MP/HLupto1080P 60 (ISO-11172)

RealVideo 8/9/10 1080 P@60

MJPEG JPEG (ISO/IEC-10918)

JPEG

*.mkv *.wmv *.mpg *.mpeg *.dat *.avi *.mov *.iso *.mp4 *.rm *.jpg

(10) JPEG H.265/H.264

H.265/H.264 1080 P@60fps

JPEG

JPEG

H.265/H.264 1080 P@60fps

HDMI 2.1

(5) HDMI 2.1 PHY CEC Dynamic HDR HDCP 2.2 4Kx2K@60

CVBS 480i/576i

(6) CVBS 480i/576i

(7) SD/HD/FHD 480 : 576i/p 720p 1080i/p 4Kx2K

(8) MIPI DSI 1080*1920 4

Ultra HD 4K S922X Wi-Fi HDMI USB

Android TV Box

Android TV
Android TV
Amlogic S922X Octa-Core Ultra HD 4K Android TV Box