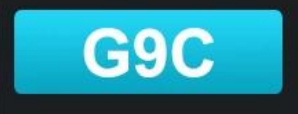


2015 最新 G9C 最新 Android 5.1 Amlogic S905 最新

Amlogic S905 Quad Core WiFi Device Smart Box
Watch TV Channels Through Wifi or Internet



品牌	G9C
处理器	Amlogic S905 四核 ARM Cortex™ -A53 CPU 四核 2.0 GHz (DVFS)
GPU	四核 Mali-450 四核 750Mhz
内存	8GB 闪存
RAM	1GB DDR3
接口	
电源	四核 5V/2A
背光LED	四核 四核:四核
系统	
操作系统	Android™ 5.1 四核
3D	3D四核1080Px2
视频	四核MPEG1/2/4,H.264 /H.265四核C/VC-1四核RM/RMVB四核Xvid/DivX3/4/5/6四核RealVideo8/9/10四核HEVC MP-10
音频	四核Avi/Rm/Rmvp/Ts/Vob/Mkv/Mov/ISO/Wmv/Asf/Flv/Dat/Mpg/Mpeg/ MP4
格式	四核MP3/WMA/AAC/WAV/OGG/AC3/DDP/TrueHD/DTS/DTS/HD/FLAC/APE
图像	四核JPEG/BMP/GIF/PNG/TIFF
USB	四核2四核USB 2.0四核U四核USB
存储	四核™ /SDHC/MMC
文件系统	四核FAT16/FAT32/NTFS
字幕	四核SRT/SMI/SUB/SSA/IDXUSB
接口	四核四核SD/HD/4K2K四核
OSD	四核四核/四核/四核四核
网络	四核四核1000M四核RJ-45四核IEEE 802.3 10/100/1000四核
无线	四核四核IEEE802.11 b/g/n 四核™ 4.1EDR
蓝牙	四核四核USB 四核四核2.4GHz USB 四核四核2.4GHz 四核四核
HDMI™	四核HDMI™ 2.0四核CEC 四核HDCP 2.2四核4K X 2K @60 fps
AV	四核
接口	四核
3G	四核
SPDIF/IEC958	四核
IPTV 四核 OTT	四核四核IPTV四核OTT
应用	
应用	四核Miracast四核Kodi四核Airplay四核Skype 四核Picasa四核Youtube四核Flicker四核Facebook四核

□□□□□□□□

- 1 *Amlogic S905 Android □□□
- 1 * HDMI □
- 1 * □□□
- 1 * □□□□□
- 1 * □□□□



Picture Show



Indicator Light Port





Micro SD Card

USB

USB



AV Port

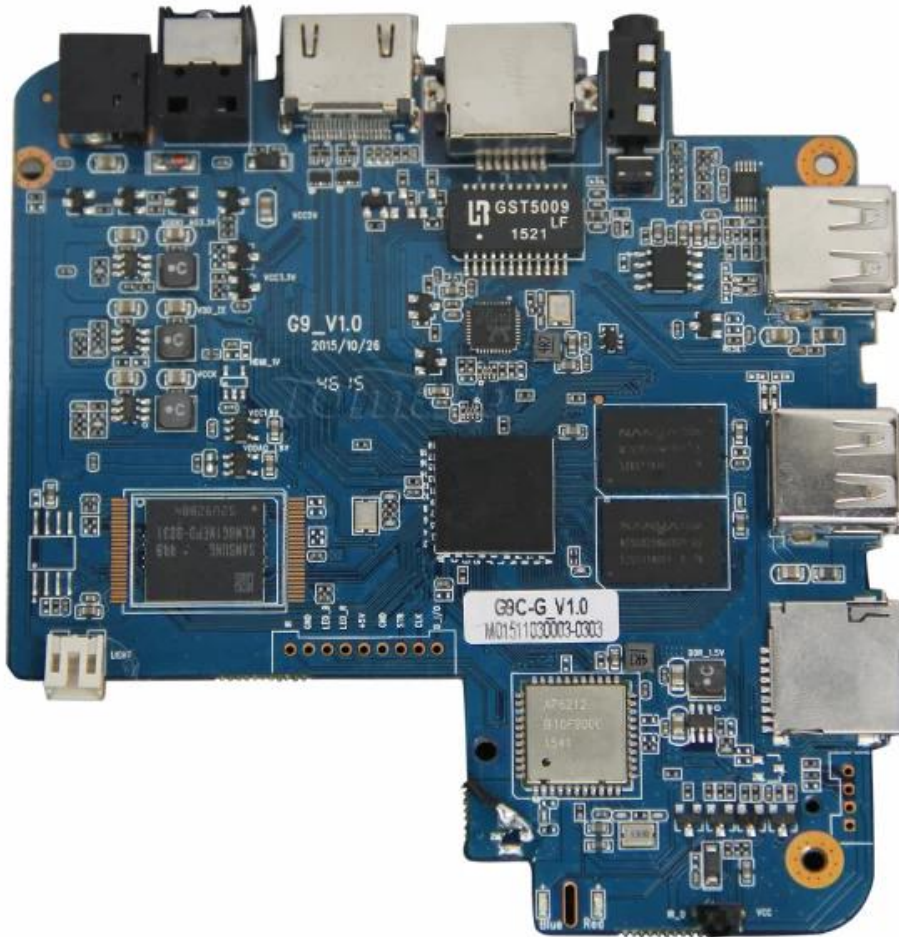
RJ 45 ETHERNET

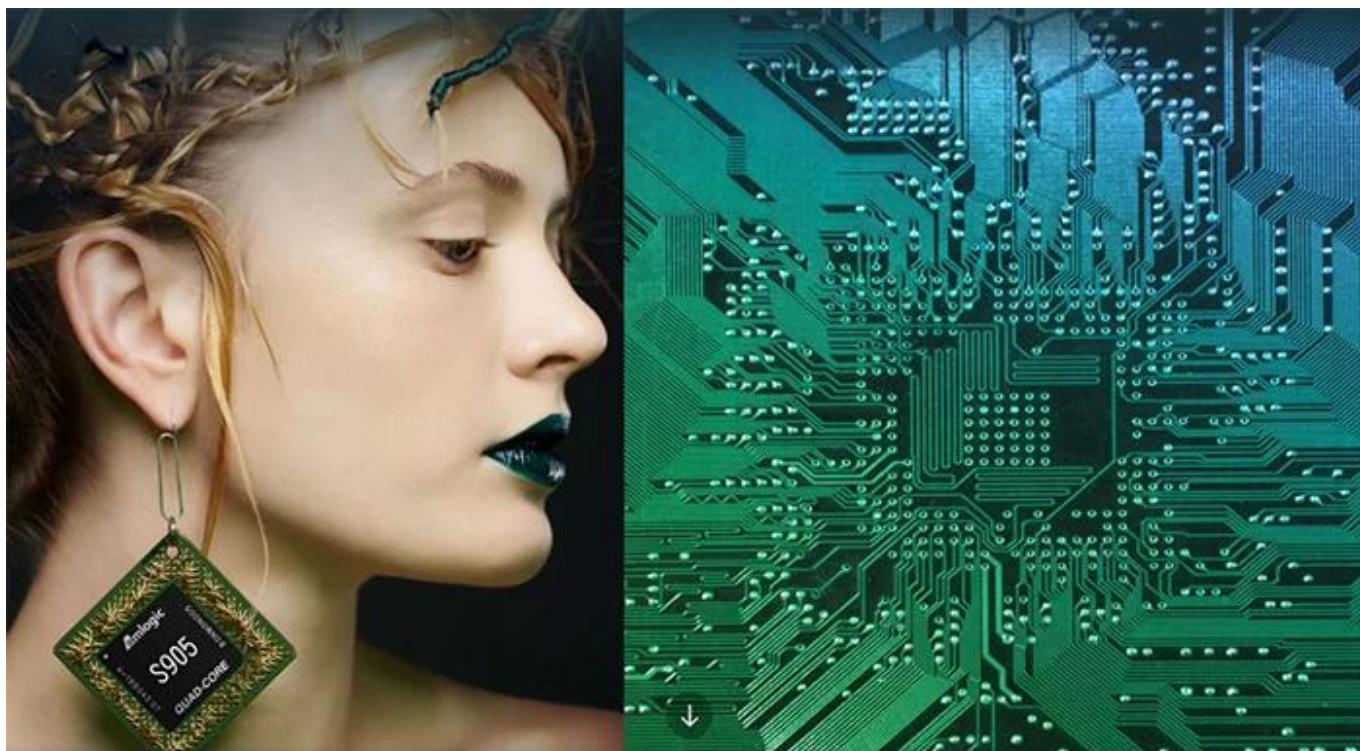
HDMI™

Optical Port

Power Port







S905

64-Bit
Quad Core
Cortex A53

4K

H.265
@60fps

HDMI 2.0
HDCP 2.2

TSMC
28NM

DRM



64 bit CPU,

While maintaining the same power consumption, the computing power of CPU has also been greatly improved.

With 4K2K decoding capabilities,
it make 4K become the standard.



The color quantity is increase by 60 times more than the previous generation.



10 bit decoding, it could highest support 1.07 billion color,
Compared to the previous generation of 16.7 million colors, it increase by 60 times.

The sound upgrade,
while supporting Dolby Digital Plus and DTS.



3 + 2 core high-frequency GPU,
it make the TV turn into the PlayStation.



The single core CPU frequency increase of 25%, 5-core computing speed can be achieved by the previous generation 8-core, it allowing you to experience smooth gaming.

Support 802.11ac WiFi protocol.

200 Mbps
实际速率

120 Mbps
上一代实际速率



Wireless projection the image&video
of the phone/computer onto the TV.



Miracast



Airplay



DLNA



SMB
共享协议



Intel@WIDI

Equipped with smart contiguous
memory allocation technology,
make the system running more smoothly.



4.1



Bluetooth[®]



HD2.0
Image output



HD1.0
Image output

Home entertainment, perfect enjoyment

- Extreme graphics, HD2.0 Image output
 - 1000M Ethernet LAN
-



Unforgettable visual
experience.

1920 * 1080 HD



Support 3D



1080P



Ultra Wide Vision

It's all about speeding up.



1G DDR3 dual channel memory and 8GB eMMC high speed flash memory.

The dual channel memory runs 1080p HD videos and large games flawlessly,
while the eMMC high speed flash memory controls apps, games, and multi-media storage with ease.

Everything comes alive with 3D.



Experience home entertainment in 3D!



S905

One of industry's first multimedia SoCs with 64-bit architecture, S905 is designed to deliver immersive theatre-level home entertainment to the users with excellent audio and video processing capabilities. It also supports operator-level security and is a perfect choice for OTT/IPTV/DVB STB, TV dongle and smart home applications.

2015 G9C Android 5.1 Amlogic S905

G9C

5.1 Android 5.1 Google Play Android

