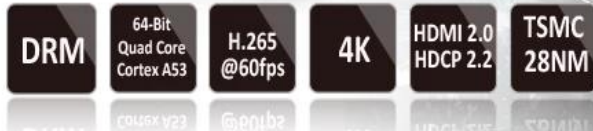


Android 5.1 Lollipop HDMI 2.0 4K * 2K Android XBMC

Amlogic S905 Quad Core WiFi Device Smart Box
Watch TV Channels Through Wifi or Internet



G9C	
Model	G9C Android XBMC
Processor	Amlogic S905 ARM Cortex™ -A53 CPU 2.0 GHz DVFS
GPU	Mali-450 750Mhz +
RAM	8GB EMMC
Storage	1GB DDR3
Power	
Power	5V / 2A
LED	LED
OS	
OS	Android™ 5.1
3D	3D 1080Px2
Video	MPEG1 / 2/4 H.264/H.265 AVC / VC-1 RM / RMVB Xvid / DivX3 / 4/5/6 RealVideo8 / 9/10 HEVC MP-10
Audio	Avi / Rm / Rm vb / Ts / Vob / Mkv / Mov / ISO / Wmv / Asf / Flv / Dat / Mpg / Mpeg /MP4
Audio	MP3 / WMA / AAC / WAV / OGG / AC3 / DDP / TrueHD / DTS / DTS / HD / FLAC / APE
Image	JPEG / BMP / GIF / PNG / TIFF
USB	2x USB 2.0 USB
Storage	™ / SDHC / MMC
Storage	FAT16 / FAT32 / NTFS
Storage	SRT / SMI / SUB / SSA / IDX + USB
Storage	SD / HD / 4K2K Ultra HD
OSD	OSD
Power	1000M RJ-45 IEEE 802.3 10/100/1000
Power	IEEE802.11 b / g / n 4.1EDR
Power	USB Dongle 2.4GHz USB Dongle 2.4GHz
HDMI™	HDMI™ 2.0 CECHDCP 2.2 4K X 2K @ 60 fps
Power	
Power	
PoE	
SPDIF / IEC958	
IPTV/OTT	IPTV/OTT
Features	
Features	Miracast Kodi Airplay Skype Picasa Youtube Flickr Facebook
Features	Android



Picture Show



Indicator Light Port





Micro SD Card

USB

USB



AV Port

RJ 45 ETHERNET

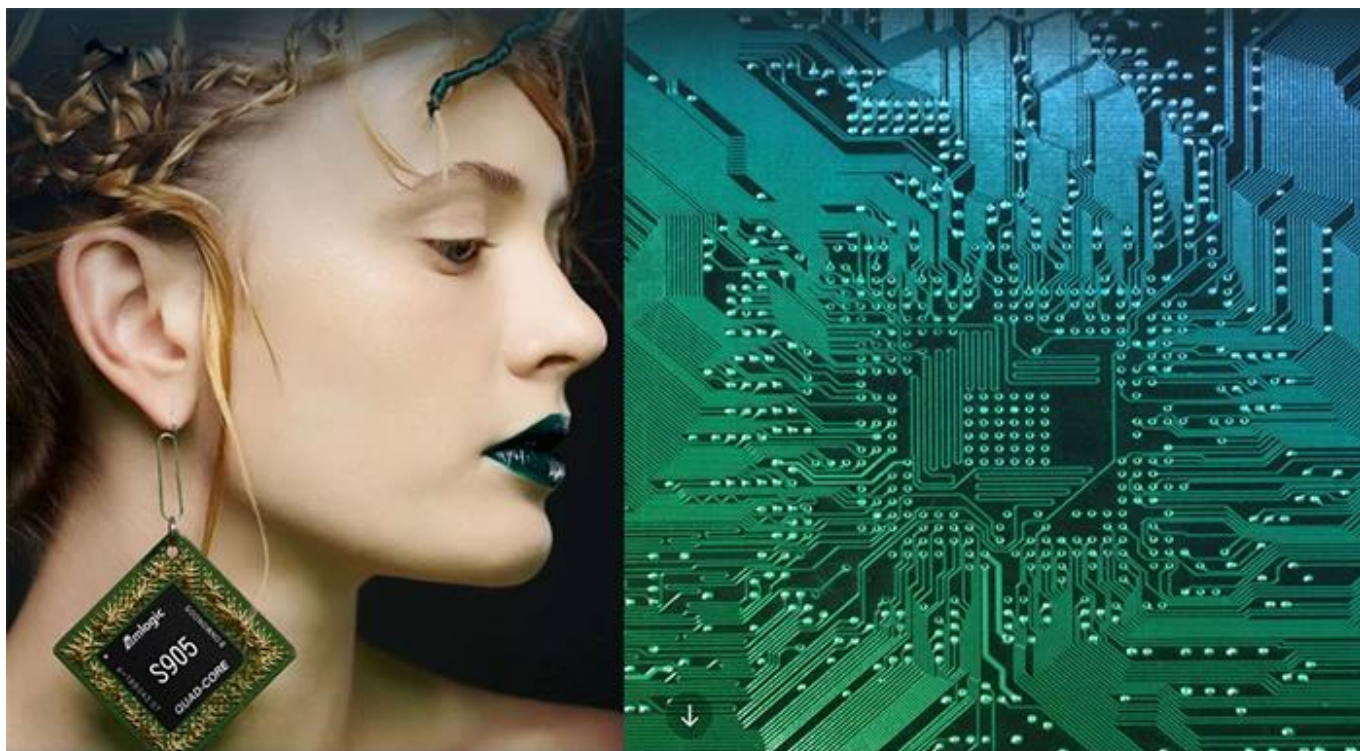
HDMI™

Optical Port

Power Port







S905

64-Bit
Quad Core
Cortex A53

4K

H.265
@60fps

HDMI 2.0
HDCP 2.2

TSMC
28NM

DRM



64 bit CPU,

While maintaining the same power consumption, the computing power of CPU has also been greatly improved.

With 4K2K decoding capabilities,
it make 4K become the standard.



The color quantity is increase by 60 times more than the previous generation.



10 bit decoding, it could highest support 1.07 billion color,
Compared to the previous generation of 16.7 million colors, it increase by 60 times.

The sound upgrade,
while supporting Dolby Digital Plus and DTS.



3 + 2 core high-frequency GPU,
it make the TV turn into the PlayStation.



The single core CPU frequency increase of 25%, 5-core computing speed can be achieved by the previous generation 8-core, it allowing you to experience smooth gaming.

Support 802.11ac WiFi protocol.

200 Mbps
实际速率

120 Mbps
上一代实际速率



Wireless projection the image&video
of the phone/computer onto the TV.



Miracast



Airplay



DLNA



SMB
共享协议



Intel@WIDI

Equipped with smart contiguous
memory allocation technology,
make the system running more smoothly.





Unforgettable visual
experience.

1920 * 1080 HD



Support 3D



1080P



Ultra Wide Vision

It's all about speeding up.



1G DDR3 dual channel memory and 8GB eMMC high speed flash memory.

The dual channel memory runs 1080p HD videos and large games flawlessly,
while the eMMC high speed flash memory controls apps, games, and multi-media storage with ease.

Everything comes alive with 3D.



Experience home entertainment in 3D!



S905

One of industry's first multimedia SoCs with 64-bit architecture, S905 is designed to deliver immersive theatre-level home entertainment to the users with excellent audio and video processing capabilities. It also supports operator-level security and is a perfect choice for OTT/IPTV/DVB STB, TV dongle and smart home applications.