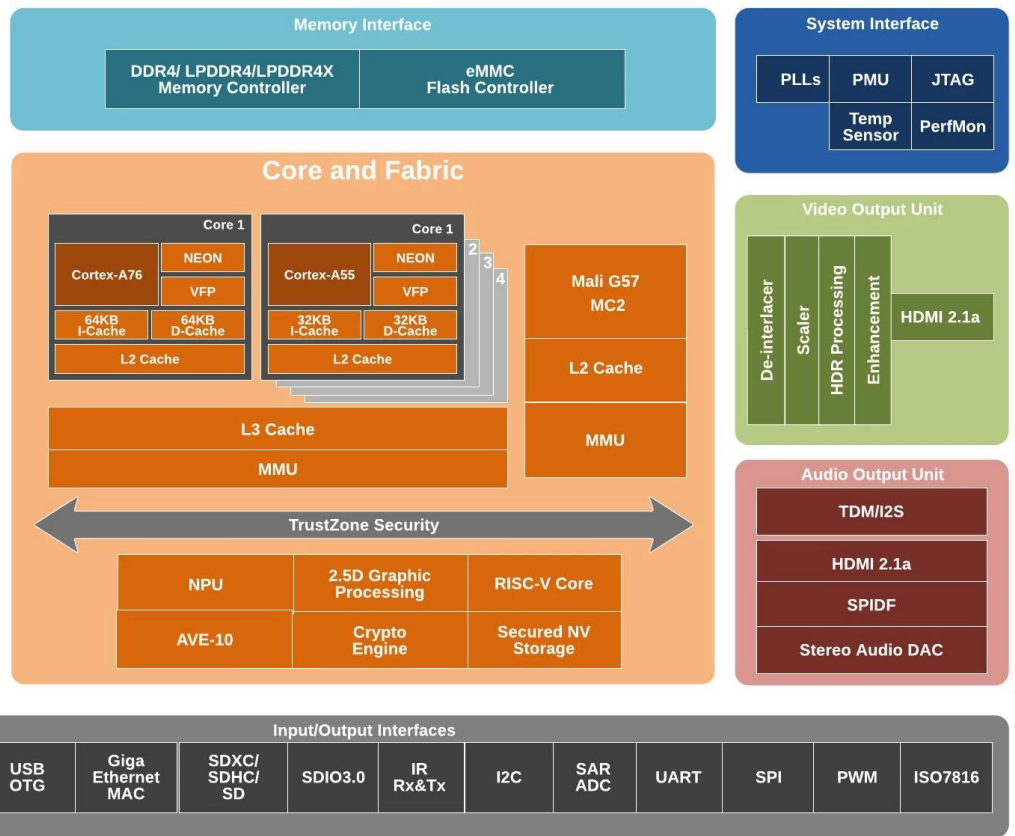


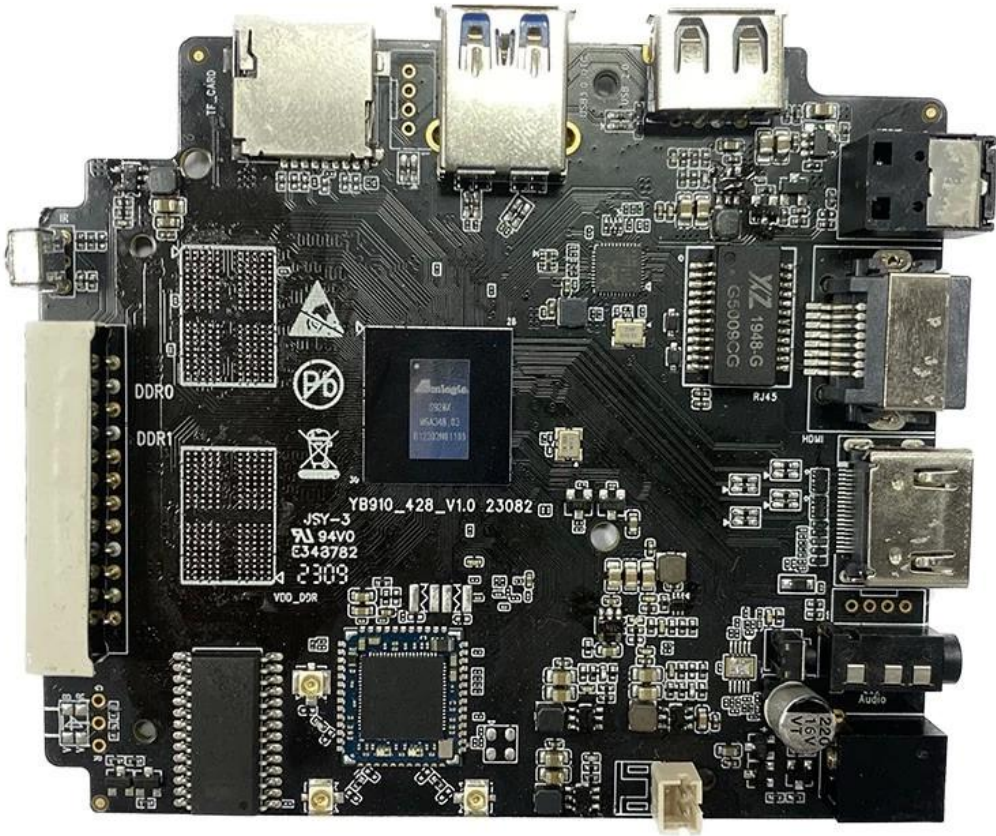
WiFi 6E 8K Brilliance Amlogic S928X-J Android -

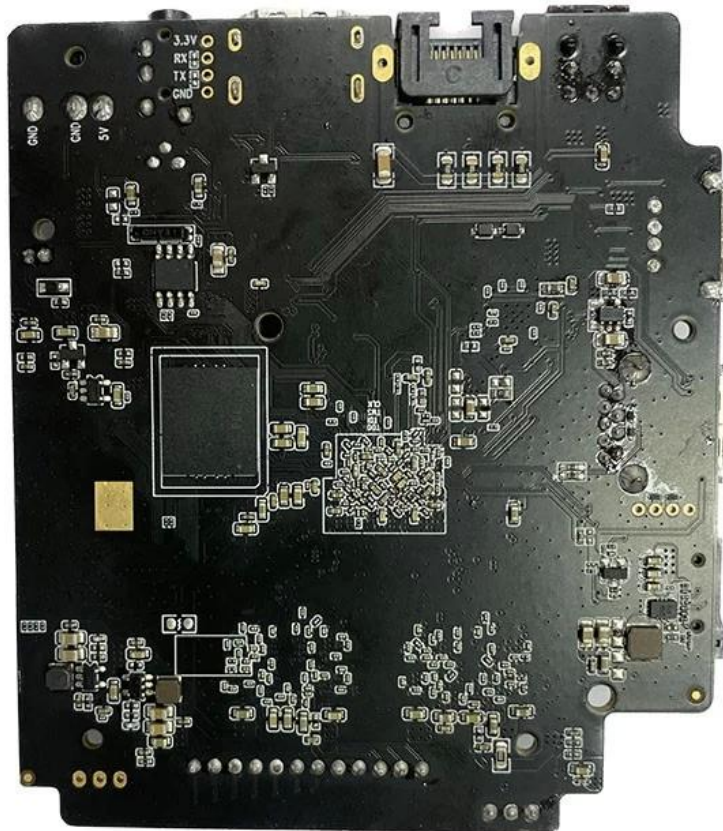
	Amlogic S928X-J
CPU	Amlogic S928X-J ARM Cortex-A76 ARM Cortex-A55
GPU	ARM Mali-G57 MC2 4K GUI OpenGL ES 3.2 Vulkan 1.2 OpenCL 2.0
NPU	3.2
	64 LPDDR4/4X 8GB DDR4266
eMMC	eMMC 5.1 SLC NAND Amlogic (AVE) AV1 MP-10 @ L6.1 8Kp60 VP9 Profile-2 @ 6.1 8Kp60 H.265 HEVC MP-10 @ L6.1 8Kp60 AVS3 1 8Kp60 AVS2-P2 8Kp60 H.264 AVC HP @ L5.2 4Kp60 MPEG-4 WMV/VC-1 AVS MPEG-2 MPEG-1 1080p60 MJPEG JPEG (ISO/IEC-10918) 4x 4Kp60 JPEG 4Kp60 H.265 4Kp60 H.264 4Kp60 8 Amlogic TruLife Dolby Vision HDR10 HDR10 HLG HDR Vivid
	3.2 TOPS (NNA) (TPU) TensorFlow Caffe
	HDMI 2.1a PHY CEC HDR HDCP 2.2/2.3 8Kp60 eARC VRR QMS QFT ALLM DSC SBTM MP3 AAC WMA RM FLAC Ogg Vorbis Opus SRS Truvolume Dolby Audio DTS 7.1/5.1 VAD
	SPDIF 192KHz 16/24/32 3 TDM/PCM/I2S TDM/PCM 48kHz x 32bits x 32ch 192kHz x 16bits x 16ch I2S 384kHz x 32bits x 16ch PDM CIC LPF HPF 8 DMIC DAC
	10/100/1000 MAC
USB2.0	1x USB XHCI OTG 2.0 2x USB 2.0 1x USB 3.0 (5 Gbps) PCIe 2.0

S928X



* Supported configuration: PCIe 2.0 port + USB 2.0 Host, or USB3.0 port without PCIe.





Amlogic S928X-J SoC ARM Cortex-A76 ARM Cortex-A55 8K SoC AV1 H.265 VP9 AVS3 AVS2 8Kp60 4K GUI SR

Amlogic S928X-J S928X-J

S928X-J ARM Cortex-A53 CPU 4K S928X-J

S928X-J 60 4K HDR10 HLG

S928X-J Mali-G31 MP2 GPU OpenGL ES3.2 Vulkan 1.1 OpenCL 2.0

S928X-J Android TV 10 Google Assistant

