

Android 5.1 S905 HDMI 2.0 4K S9

S9

Amlogic S905 Quad Core S9

New! Amlogic S905 Quad Core ARM Cortex™-A53 CPU
up to 2.0 GHz, 1GB/8GB H.265 4K2K Android 5.1 TV Box!



S905

1GB
8GB



DLNA

H.265
HEVC

4k2k



Android 5.1

FULL HD
1080P



□□□□	
□□	S9
CPU	□ S905 □□□□ ARM Cortex™-A53 CPU □□ 2.0 g h z (DVFS)
GPU	□-□□□□-450 □□ 750 Mhz +
□□	8 GB
DDR3	1 GB DDR3
□□	□□ □□
□□	
□□ □□	□□ 5V/2A
□□ □□ (LED)	LED □□□ □□□ □□□ □□□ □□□□□□ < 0.5 w
□□	
□□□□	Android™ 5.1 □□□
□□	H.265 □ 4Kx2K@60fps HEVC MP-10@L5.1
	H.264 AVC HP™@L5.1 □ 4Kx2K@30fps
	H.264 MVC □ 1080P@60fps
	MPEG-4 ASP@L5 □ 1080P@60fps (ISO 14496)
	WMV/VC-1 SP/MP/AP □ 1080P@60fps
	AVS-P16(AVS+) / □ 1080P@60fps AVS P2 □□□□
	MPEG-2 MP/HL □ 1080P@60fps (ISO 13818)
	MPEG-1 MP/HL □ 1080P@60fps (ISO 11172)
	RealVideo 10/8/9 □□□ 1080p
	WebM □ VGA
	□□ □□□□□□□□□□□□□□
	MJPEG □ JPEG □□□□□□□□□□ Decoding(ISO/IEC-10918)
□□ JPEG □□□□ □□□ □□□□□□□□	
□□ *.mkv□ *.wmv□ *.mpg□ *.mpeg□ *.dat□ *.avi□ *.mov□ *.iso□ *.mp4□ *.rm□ *.jpg □□□□	
□□	□ DSP □□□□□□ MediaCPU
□□	□□ MP3□ AAC□ WMA□ RM□FLAC□Ogg □□□□□ 5.1 □□□
□□	□□ SPDIF/IEC958 PCM □□□□□□□□□□□□
□□	□□ JPEG□GIF□PNG□BMP TIF
□□ □□	□□ □□□□□□□□□□□□□□□□
I/O	
1 * HDMI™	4 * 2 K □□□□HDMI™ 2.0
1 * AV □	480i/576i □□□□□□
3 * USB	2 * USBHost □□□1 * USB □□
1 * □	□□ □□□□
1 * RJ45	□□□ 1000m LAN □□
1 * SD™/MMC □	□□ 4 GB/8GB/16GB/32 GB/64 GB
□□□□	
□□	□□ □□□□□□□□□□ Netflix□ □□□ Flixster□Youtube □□
□□□□	□□□□ □□□□□□□□ android □□□□□□□□ □□□□□□□□
□□	□□ □□□□□□□□□□ U Disck SD™/MMC □□

□□ □□	□□ SKYPE □□□□MSN□facebook□twitter□QQ □□
□□□	□□ □□□□□□□□□□ □□ DLNA □□ □□ 2.4 G □□□□/□□


Picture Show



Indicator



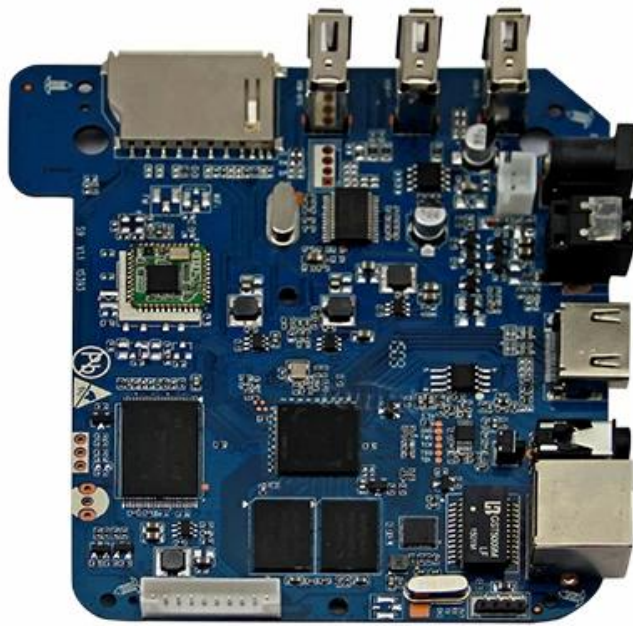
USB*3

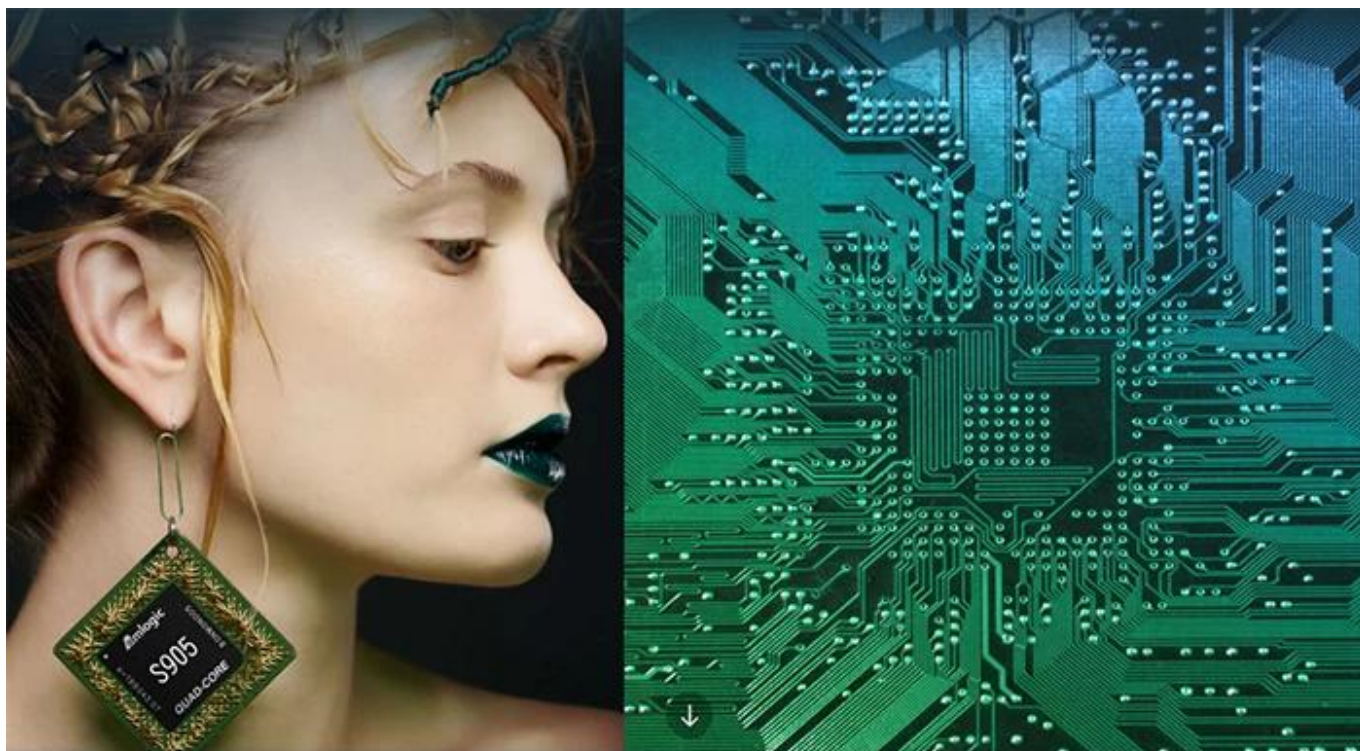
SD/MMC Card



ON/OFF Button DC Port RJ45 ETHERENT AV Port HDMI™ OPTICAL Port







S905

64-Bit
Quad Core
Cortex A53

4K

H.265
@60fps

HDMI 2.0
HDCP 2.2

TSMC
28NM

DRM



64 bit CPU,

While maintaining the same power consumption, the computing power of CPU has also been greatly improved.

With 4K2K decoding capabilities,
it make 4K become the standard.



The color quantity is increase by 60 times more than the previous generation.



10 bit decoding, it could highest support 1.07 billion color,
Compared to the previous generation of 16.7 million colors, it increase by 60 times.

The sound upgrade,
while supporting Dolby Digital Plus and DTS.



3 + 2 core high-frequency GPU,
it make the TV turn into the PlayStation.



The single core CPU frequency increase of 25%, 5-core computing speed can be achieved by the previous generation 8-core, it allowing you to experience smooth gaming.

Support 802.11ac WiFi protocol.

200 Mbps
实际速率

120 Mbps
上一代实际速率



Wireless projection the image&video
of the phone/computer onto the TV.



Miracast



Airplay



DLNA



SMB
共享协议



Intel@WIDI

Equipped with smart contiguous
memory allocation technology,
make the system running more smoothly.



4.1



Bluetooth[®]



HD2.0
Image output



HD1.0
Image output

Home entertainment, perfect enjoyment

- Extreme graphics, HD2.0 Image output
 - 1000M Ethernet LAN
-



Unforgettable visual
experience.

1920 * 1080 HD



Support 3D



1080P



Ultra Wide Vision

It's all about speeding up.



1G DDR3 dual channel memory and 8GB eMMC high speed flash memory.

The dual channel memory runs 1080p HD videos and large games flawlessly,
while the eMMC high speed flash memory controls apps, games, and multi-media storage with ease.

Everything comes alive with 3D.



Experience home entertainment in 3D!



S905

One of industry's first multimedia SoCs with 64-bit architecture, S905 is designed to deliver immersive theatre-level home entertainment to the users with excellent audio and video processing capabilities. It also supports operator-level security and is a perfect choice for OTT/IPTV/DVB STB, TV dongle and smart home applications.