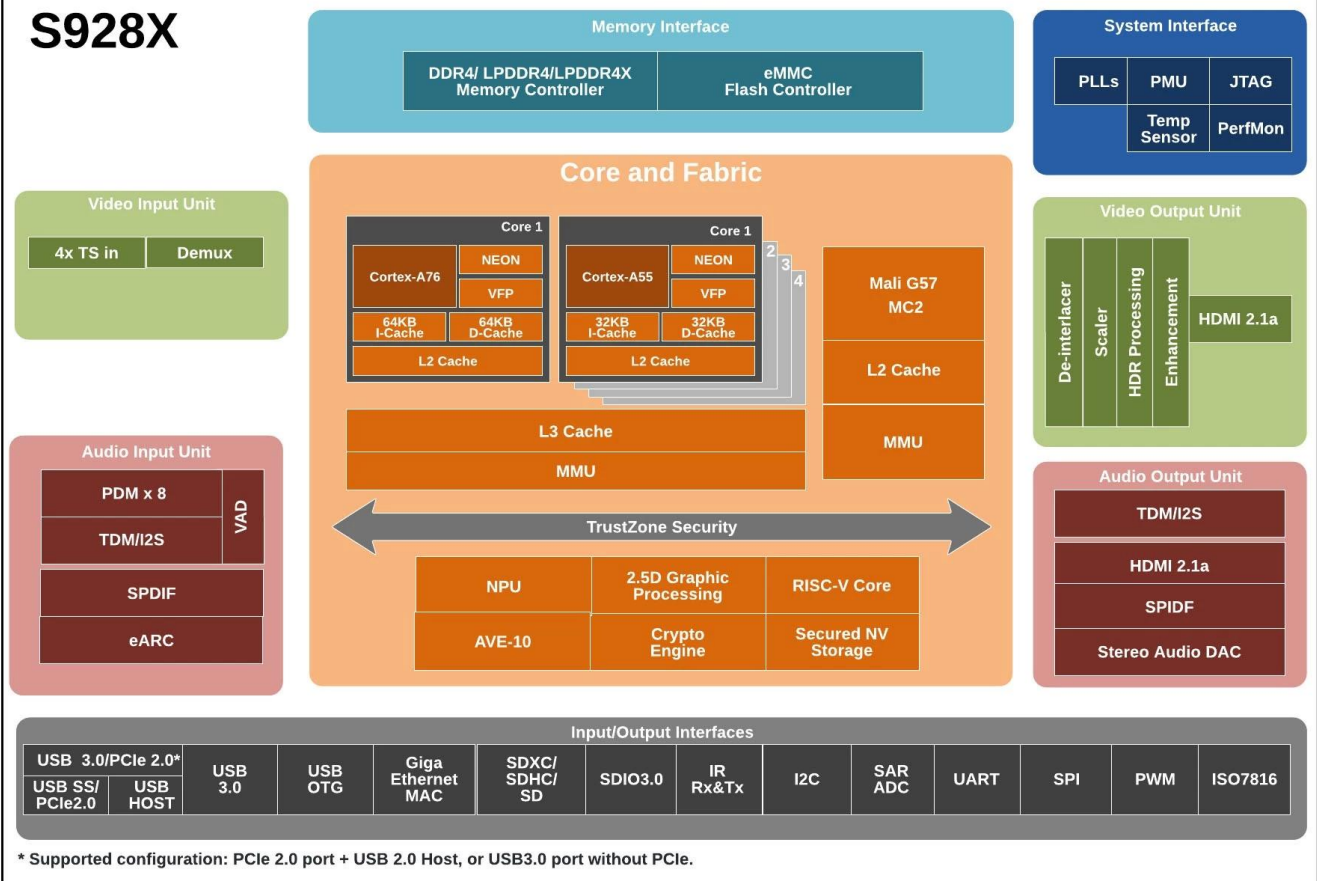


产品规格

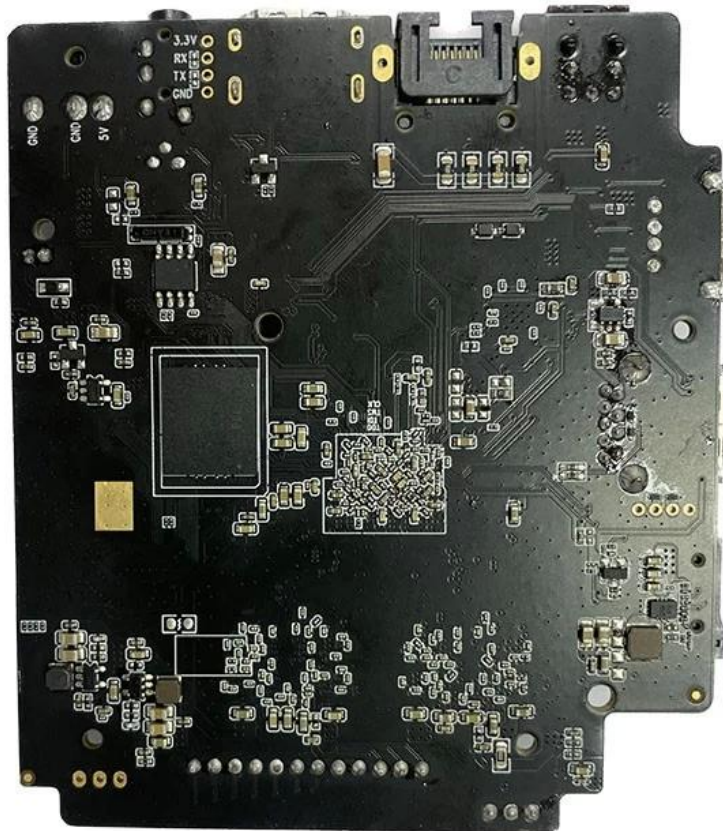
项目	规格
芯片	Amlogic S928X 64位 Android 10.0
CPU	Amlogic S928X ARM Cortex-A76 4核 ARM Cortex-A55 4核
GPU	ARM Mali-G57 MC2 4K GUI OpenGL ES 3.2 Vulkan 1.2 OpenCL 2.0
NPU	3.2 TOPS
内存	64位 LPDDR4/LPDDR4/4X 8GB DDR4266
eMMC	eMMC 5.1 SLC NAND 32GB
视频解码	支持 Amlogic AVE (AVE) 硬件解码 AV1 MP-10 @ L6.1 8Kp60 VP9 Profile-2 @ 6.1 8Kp60 H.265 HEVC MP-10 @ L6.1 8Kp60 AVS3 1 8Kp60 AVS2-P2 8Kp60 H.264 AVC HP @ L5.2 4Kp60 MPEG-4 WMV/VC-1 AVS MPEG-2 MPEG-1 1080p60 MJPEG JPEG (ISO/IEC-10918) 4x 4Kp60 JPEG 4Kp60 H.265 4Kp60 H.264 4Kp60 8 Amlogic TruLife Dolby Vision HDR10 HDR10+ HLG HDR Vivid
视频编码	3.2 TOPS (NNA) (TPU) TensorFlow Caffe HDMI 2.1a PHY CEC HDR HDCP 2.2/2.3 8Kp60 eARC VRR QMS QFT ALLM DSC SBTM MP3 AAC WMA RM FLAC Ogg Vorbis Opus SRS Truvolume Dolby Audio DTS 7.1/5.1 VAD SPDIF 192KHz 16/24/32 3 TDM/PCM/I2S TDM/PCM 48kHz x 32bits x 32ch 192kHz x 16bits x 16ch I2S 384kHz x 32bits x 16ch CIC LPF HPF PDM 8 DMIC DAC
网络	10/100/1000 MAC
USB2.0	1x USB XHCI OTG 2.0 2x USB 2.0 1x USB 3.0 (5 Gbps) PCIe 2.0

S928X









Android Android

1. Android
2. 4K 4K
3. Android Google Play
4. Google Assistant
5. HDMI Android Wi-Fi USB

6.

7. Android

8.

9. Android

Android Android