

# Androide TV Quad Core Amlogic S805 Android 4.4 Quad Core compatible con H.265 4K2K MXQ2



## Especificaciones de hardware

|                |  |
|----------------|--|
| N ° de Modelo. | MXQ2   |
| UPC            | Amlogic S805 Cortex-A5 de cuatro núcleos a 1,5 GHz |
| GPU            | Malí de cuatro núcleos™ -450@600MHz                |
| DESTELLO       | FLASH NAND DE 8GB                                  |
| SDRAM          | 1GBDDR3  |

## Especificaciones de la fuente de alimentación

|                              |                                  |
|------------------------------|----------------------------------|
| Fuente de alimentación       | CC 5 V/2 A.                      |
| Indicador de encendido (LED) | Encendido: azul; En espera: rojo |

## Principales características

|                                     |  |
|-------------------------------------|--|
| OS                                  | Android™ 4.4   |
| 3D                                  | Aceleración de gráficos 3D dura  |
| Formato de decodificador de soporte | HD MPEG1/2/4, <b>H.265</b> , HD AVC/VC-1, RM/RMVB, Xvid/DivX3/4/5/6, RealVideo8/9/10 |
| Formato de medios de soporte        | Avi/Rm/Rm vb/Ts/Vob/Mkv/Mov/ISO/wmv/asf/flv/dat/mpg/mpeg                             |
| Soporte de formato de música        | MP3/WMA/AAC/WAV/OGG/AC3/DDP/TrueHD/DTS/DTS/HD/FLAC/APE                               |
| Formato de foto de soporte          | HDJPEG/BMP/GIF/PNG/TIFF  |
| Puerto USB                          | 2 USB 2.0 de alta velocidad, compatible con U DISK y USB HDD                         |
| Lector de tarjetas                  | Tarjeta TF   |
| sistema de archivos del disco duro  | FAT16/FAT32/NTFS   |
| Subtítulo de soporte                | SRT/SMI/SUB/SSA/IDXUSB   |
| Salida de vídeo de alta definición  | SD/HD máx.1920x1080 píxeles  |
| Tipo de idiomas OSD                 | Idiomas multilaterales inglés/francés/alemán/español/italiano/etc.                   |
| LAN                                 | Ethernet: 10/100M, estándar RJ-45  |
| Inalámbrico                         | Wi-fi incorporado™   |
| Bluetooth™                          | Soporte Bluetooth™ 4.0   |

|                   |   |
|-------------------|---|
| Ratón/teclado     | Admite mouse y teclado a través de USB; Admite mouse y teclado inalámbricos de 2,4 GHz a través de un dongle USB de 2,4 GHz |
| hdmi <sup>™</sup> | HDMI <sup>™</sup> 1.4b Con CCA  |
| AV                | Apoyo   |
| 3G                | Apoyo   |
| SPDIF/IEC958      | Coaxial   |

### **Especificaciones de software**

|                     |   |
|---------------------|---|
| Función de red      | XBMC, chat de Skype, Picasa, Youtube, Flickr, Facebook, películas en línea, etc.              |
| Otra característica | Búsqueda gratuita en Internet, miles de aplicaciones de Android, muchos tipos de juegos, etc. |



# Picture Show











- Black color: available now and enough stocks
- Red/Grey/Blue colors: **OEM**





27°C 上海

10:32 Wednesday, Sep 10

|   |   |  |  |  |  |
|---|---|--|--|--|--|
|  <p>Online Video</p> |  <p>My recommend</p> |  <p>Setting</p> |  |  |  |
|  <p>My Apps</p>      |  <p>Music</p>        |  <p>Local</p>   |  |  |  |
|   |   |  |  |  |  |

|  |  |  |  |  |  |
|--|--|--|--|--|--|
|  |  |  |  |  |  |
|  |  |  |  |  |  |
|  |  |  |  |  |  |
|  |  |  |  |  |  |
|  |  |  |  |  |  |





# Root Checker

Device: MXQ  
Android: 4.4.2 | API: 19

Check Now

Status: Rooted

Id: uid=0(root) gid=0(root)

Superuser: Not found

Busybox: /system/xbin/busybox

Su Location: /system/xbin/su

Sudo Location: Not found

Environment Vars.:  
/sbin/  
/vendor/bin/  
/system/sbin/  
/system/bin/  
/system/xbin/

CPU-Z CPU-Z SOC SYSTEM BATTERY SENSORS ABOUT CPU-Z SOC SYSTEM BATTERY SENSORS ABOUT

|                     |                           |
|---------------------|---------------------------|
| Model               | MXQ(MXQ)                  |
| Manufacturer        | MBX                       |
| Board               | MXQ                       |
| Display             | KOT49H.20140903 test-keys |
| Hardware            | amlogic                   |
| Android Version     | 4.4.2                     |
| Kernel Architecture | armv7l                    |
| Kernel Version      | 3.10.33 (20140903)        |
| Screen Resolution   | 1920 x 1008               |
| Screen Density      | 240 dpi                   |
| Total RAM           | 825 MB                    |
| Available RAM       | 244 MB (29%)              |
| Internal Storage    | 5.26 GB                   |
| Available Storage   | 4.98 GB (94%)             |
| Root Access         | Yes                       |

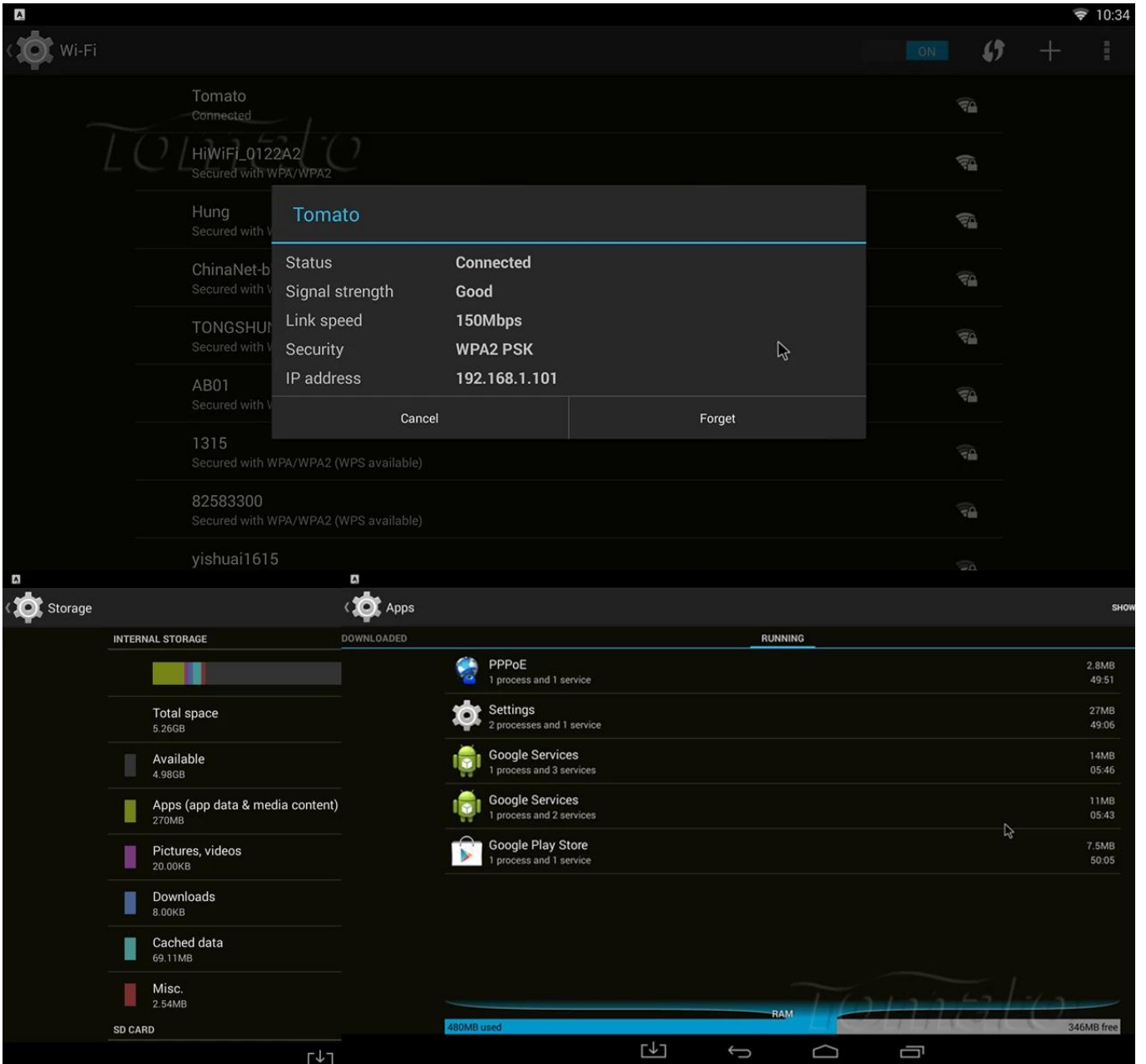
**Cortex** ARM Cortex-A5  
Intelligent Processors by ARM<sup>®</sup> 1.49 GHz

|                  |                   |
|------------------|-------------------|
| CPU Architecture | ARM Cortex-A5     |
| Cores            | 4                 |
| Revision         | r0p1              |
| Clock Speed      | 24 MHz - 1.49 GHz |
| Core 0           | 1488 MHz          |
| Core 1           | 1488 MHz          |
| Core 2           | 1488 MHz          |
| Core 3           | 1488 MHz          |
| CPU Load         | 11 %              |
| GPU Vendor       | ARM               |
| GPU Renderer     | Mali-450 MP       |

 Language

|                          |                          |                      |             |            |         |
|--------------------------|--------------------------|----------------------|-------------|------------|---------|
| Afrikaans                | Español (España)         | Slovenčina           | Српски      | فارسی      |         |
| Bahasa Indonesia         | Español (Estados Unidos) | Magyar               | Slovenščina | Українська | አማርኛ    |
| Bahasa Melayu            | Filipino                 | Nederlands           | Suomi       | עברית      | हिन्दी  |
| Català                   | Français                 | Norsk bokmål         | Svenska     | العربية    | ไทย     |
| Čeština                  | Hrvatski                 | Polski               | Tiếng Việt  | فارسی      | 한국어     |
| Dansk                    | IsiZulu                  | Português (Brasil)   | Türkçe      | አማርኛ       | 中文 (简体) |
| Deutsch                  | Italiano                 | Português (Portugal) | Ελληνικά    | हिन्दी     | 中文 (繁體) |
| English (United Kingdom) | Kiswahili                | Română               | Български   | ไทย        | 日本語     |
| English (United States)  | Latviešu                 | Rumantsch            | Русский     | 한국어        |         |







# SETTINGS



Network



Display



Advanced



Other



Miracast

Remote Control

OFF

CEC Control

Location

Shanghai

Shanghai

Application request to change orientation



Keep landscape mode on home screen



Digital audio auto-detection

OFF

Digital Audio Output

PCM



About MediaBox

10:33

System updates

Status

Status of network and other information

Legal information

Model number

hd18q

Android version

4.4.2

Kernel version

3.10.33

tao.jiang@wyst #10

Wed Sep 3 10:13:24 CST 2014

Build number

KOT49H.20140903 test-keys

Ethernet Infor

IP address,DNS,MAC address,etc.