

## Arm Linux Mini PC

### Specifications

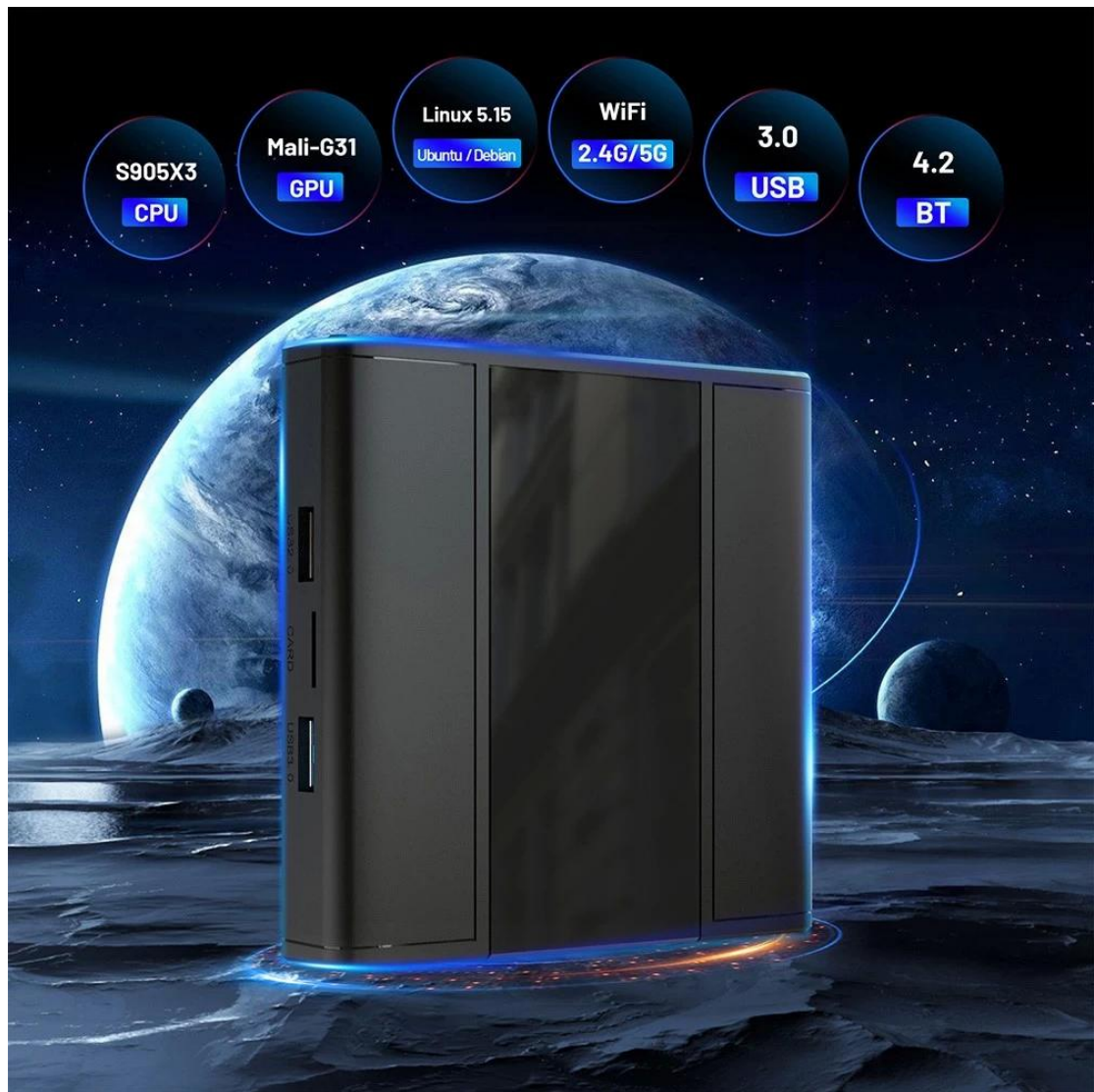
Model No.	Arm Linux Mini PC
CPU	Amlogic S905X3 64-bit Quad Core ARM® Cortex™ A55 CPU
GPU	G31™ MP2 GPU processor
RAM	DDR3: 2GB/4GB
ROM	eMMC: 32GB(Optional: 16GB/64GB)
OS	Ubuntu20.04(Linux5.15)
WiFi	IEEE 802.11 a/b/g/n/ac; 2.4G / 5G
Bluetooth	BT4.2
Desktop	lubuntu /xubuntu / lxde / xfce4
Apps & Services	You can install applications or services by apt or dpkg.
Default Language	English

### I/O Port

HDMI	1*HDMI 2.1
USB	1* USB 3.0 2* USB 2.0
AV Out	only Android
IR Reciver	Remote Reciver Connect [Optional]
RTC	[Optional]
LED Display	Time & Icons
RJ45	Ethernet Interface; Support 10/100/1000M
TF card slot	Support 4GB/8GB/16GB/32GB/64GB

### Power

Power Supply	DC 5V/2A
--------------	----------



Amlogic S905X3 Advanced application processor  
designed for high end media player



64-bit quad core  
Cortex™ A55

G31™ MP2



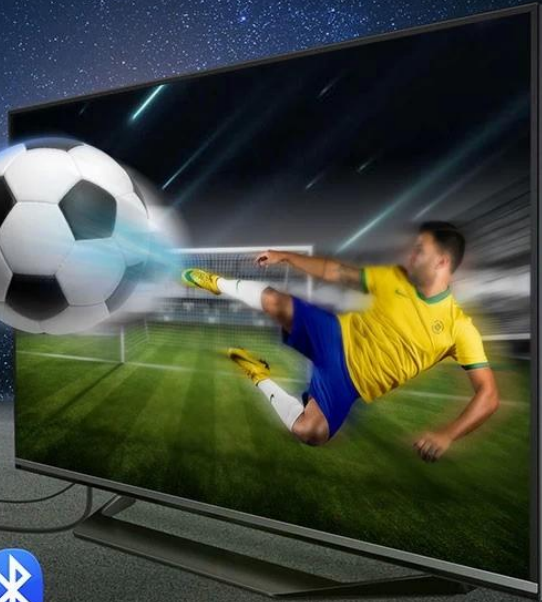
Equipped with dual band 2.4G&5G&802.11 a/b/g/n/ac and Bluetooth 4.2, the transmission speed is much faster!



2.4G&5G  
802.11 a/b/g/n/ac



4.2





Multiple USB interfaces available to connect multiple devices.  
Super Speed USB3.0 interface speed up to 5Gbps

**USB**  
**2.0**

30MB/S

**USB**  
**3.0**

320MB/S



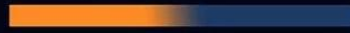
## Dual Band Wireless

Run Box without Buffering Strong Signal



2.4G 5G

2.4GHz



5GHz



The Linux system with powerful network function to support different Ethernet protocols, an open source system composed of many micro core

# Linux

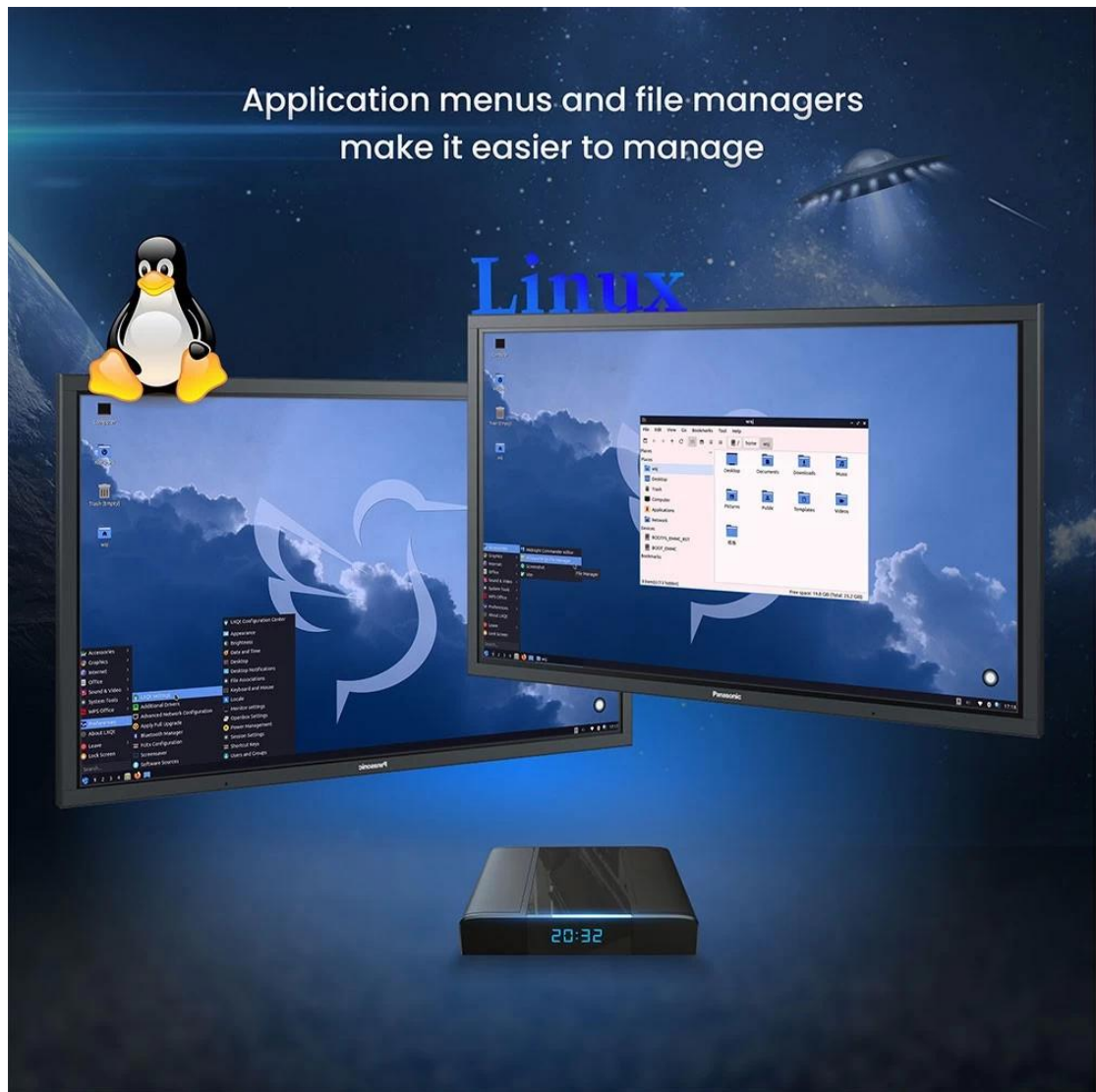




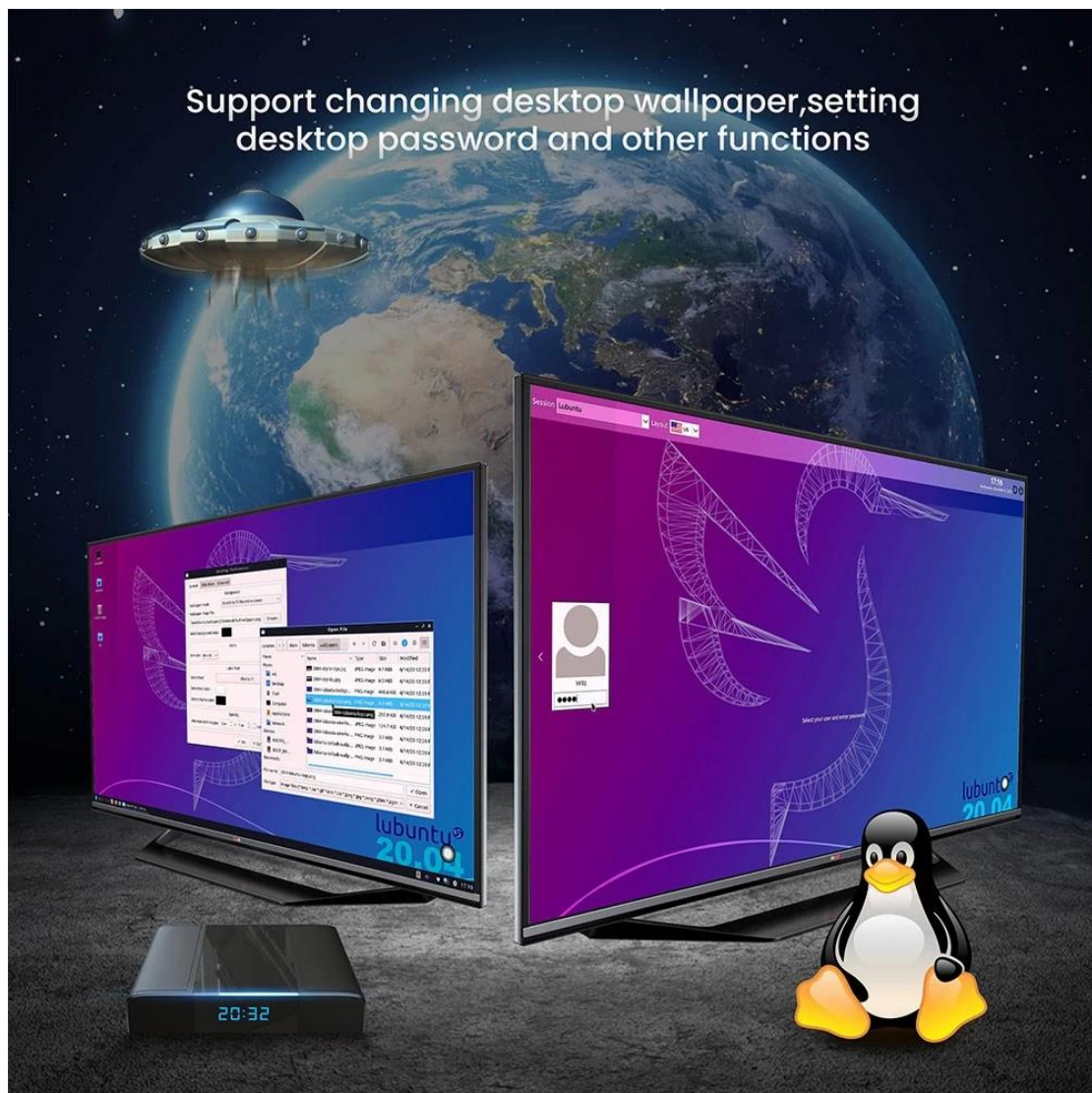
The Linux system is pre-installed with applications such as browsers, screenshot software, etc., providing convenient Internet experience, and retaining every wonderful moment

Application menus and file managers  
make it easier to manage

Linux

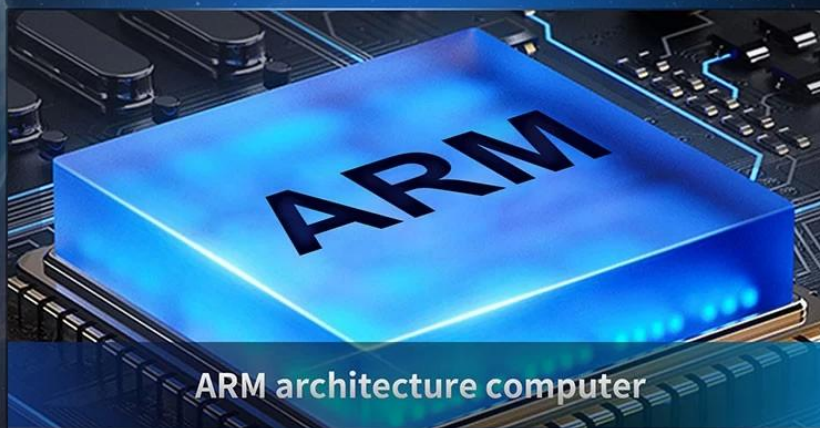


Support changing desktop wallpaper, setting  
desktop password and other functions





What can do?







# Package Contents



Power Adapter\*1



HDMI Cable\*1

The Arm Linux Mini PC is designed to offer users a flexible and reliable computing solution. Here are the key features and benefits:

1. **ARM-Based Processor:** Powered by an ARM processor, providing efficient performance for everyday computing tasks.
2. **Linux Operating System:** Pre-installed with Linux, offering users access to a wide range of open-source software and tools for customization and development.
3. **Compact Form Factor:** Compact and lightweight design, suitable for space-constrained environments such as home offices, classrooms, and small businesses.
4. **Versatile Connectivity:** Equipped with multiple ports including USB,

HDMI, Ethernet, and audio, ensuring seamless connectivity with peripherals and accessories.

5. **Quiet Operation:** Fanless design for silent operation, ideal for noise-sensitive environments.
6. **Low Power Consumption:** Energy-efficient design helps reduce power consumption, making it an environmentally friendly choice.
7. **Customization Options:** Offers flexibility for customization and expansion to meet specific user needs and applications.
8. **Wide Range of Applications:** Suitable for various applications including media streaming, web browsing, office productivity, and DIY projects.

In summary, the Arm Linux Mini PC offers a balance of performance, versatility, and affordability, making it an excellent choice for users seeking a compact computing solution with Linux capabilities.