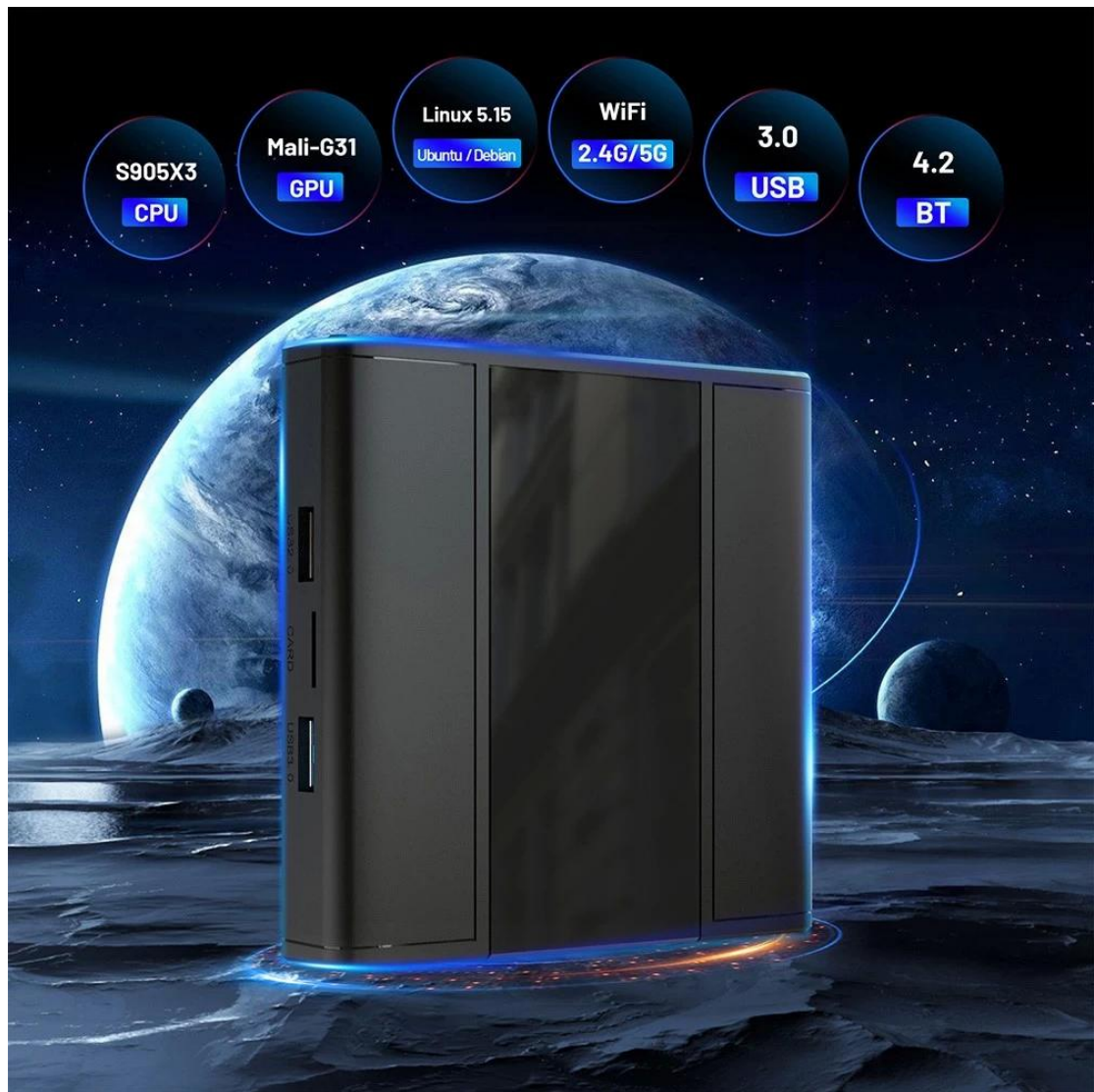


Take Your Viewing Experience to the Next Level with Our Linux-based TV Box

Specifications	
Model No.	Linux-based TV Box
CPU	Amlogic S905X3 64-bit Quad Core ARM® Cortex™ A55 CPU
GPU	G31™ MP2 GPU processor
RAM	DDR3: 2GB/4GB
ROM	eMMC: 32GB(Optional: 16GB/64GB)
OS	Ubuntu20.04(Linux5.15)
WiFi	IEEE 802.11 a/b/g/n/ac; 2.4G / 5G
Bluetooth	BT4.2
Desktop	lubuntu /xubuntu / lxde / xfce4
Apps & Services	You can install applications or services by apt or dpkg.
Default Language	English
I/O Port	
HDMI	1*HDMI 2.1
USB	1* USB 3.0 2* USB 2.0
AV Out	only Android
IR Reciver	Remote Reciver Connect [Optional]
RTC	[Optional]
LED Display	Time & Icons
RJ45	Ethernet Interface; Support 10/100/1000M
TF card slot	Support 4GB/8GB/16GB/32GB/64GB
Power	
Power Supply	DC 5V/2A



Amlogic S905X3 Advanced application processor
designed for high end media player



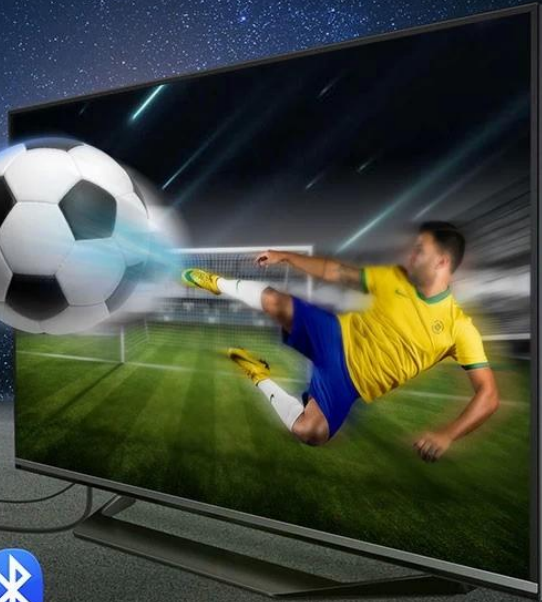
Equipped with dual band 2.4G&5G&802.11 a/b/g/n/ac and Bluetooth 4.2, the transmission speed is much faster!



2.4G&5G
802.11 a/b/g/n/ac



4.2



Multiple USB interfaces available to connect multiple devices.
Super Speed USB3.0 interface speed up to 5Gbps

USB
2.0

30MB/S

USB
3.0

320MB/S



Dual Band Wireless

Run Box without Buffering Strong Signal



2.4G 5G

2.4GHz



5GHz

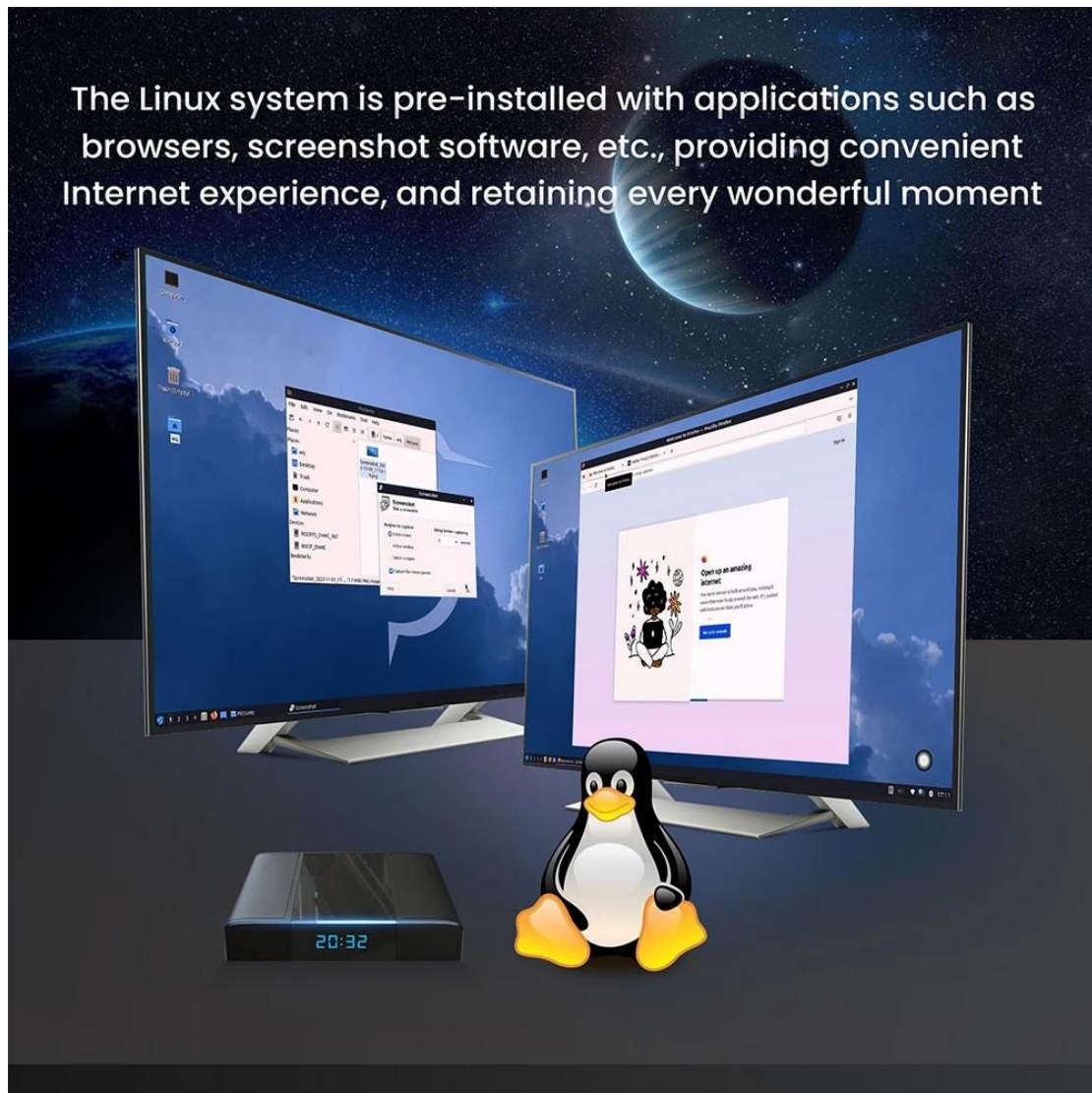


The Linux system with powerful network function to support different Ethernet protocols, an open source system composed of many micro core

Linux

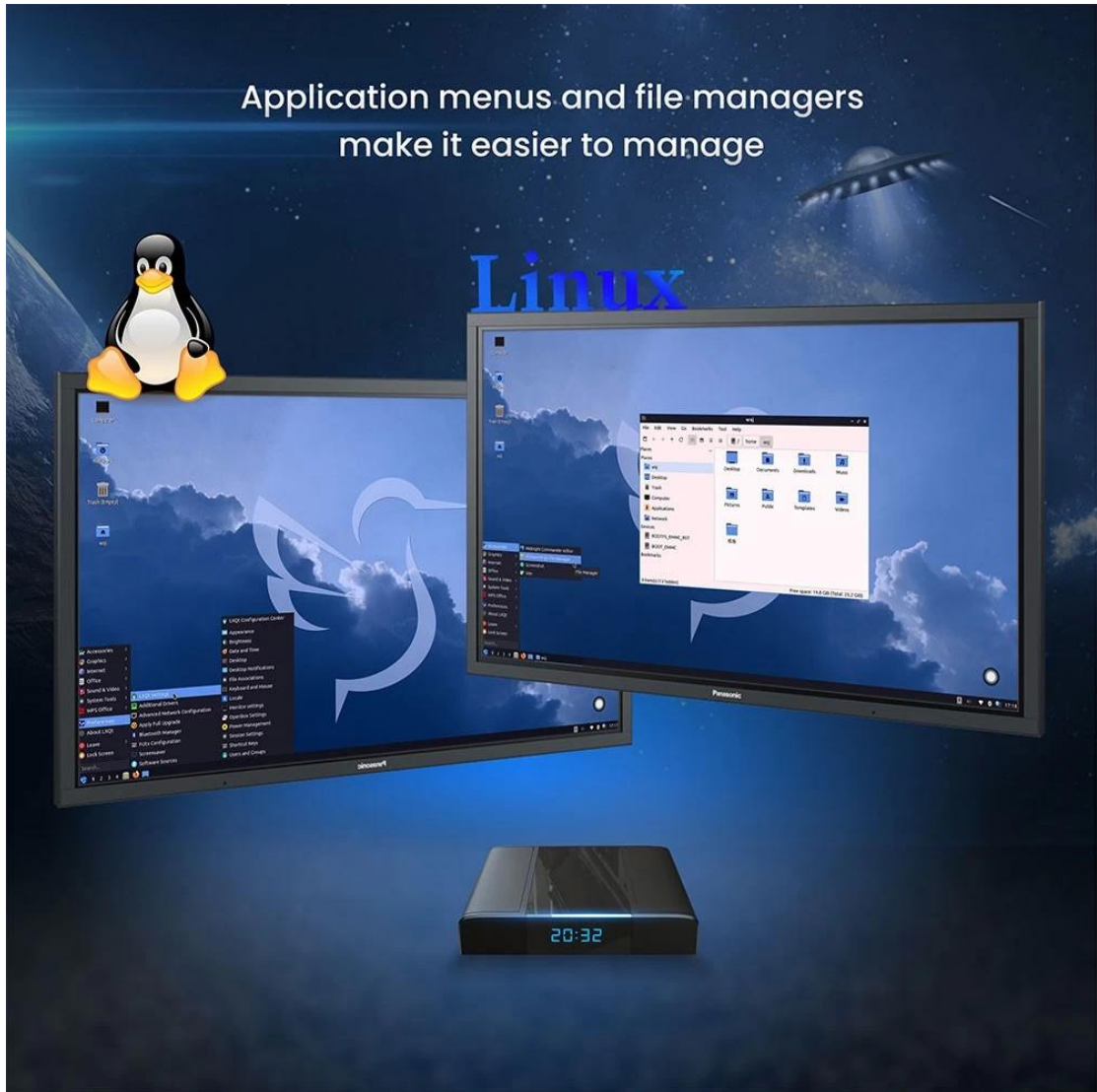


The Linux system is pre-installed with applications such as browsers, screenshot software, etc., providing convenient Internet experience, and retaining every wonderful moment

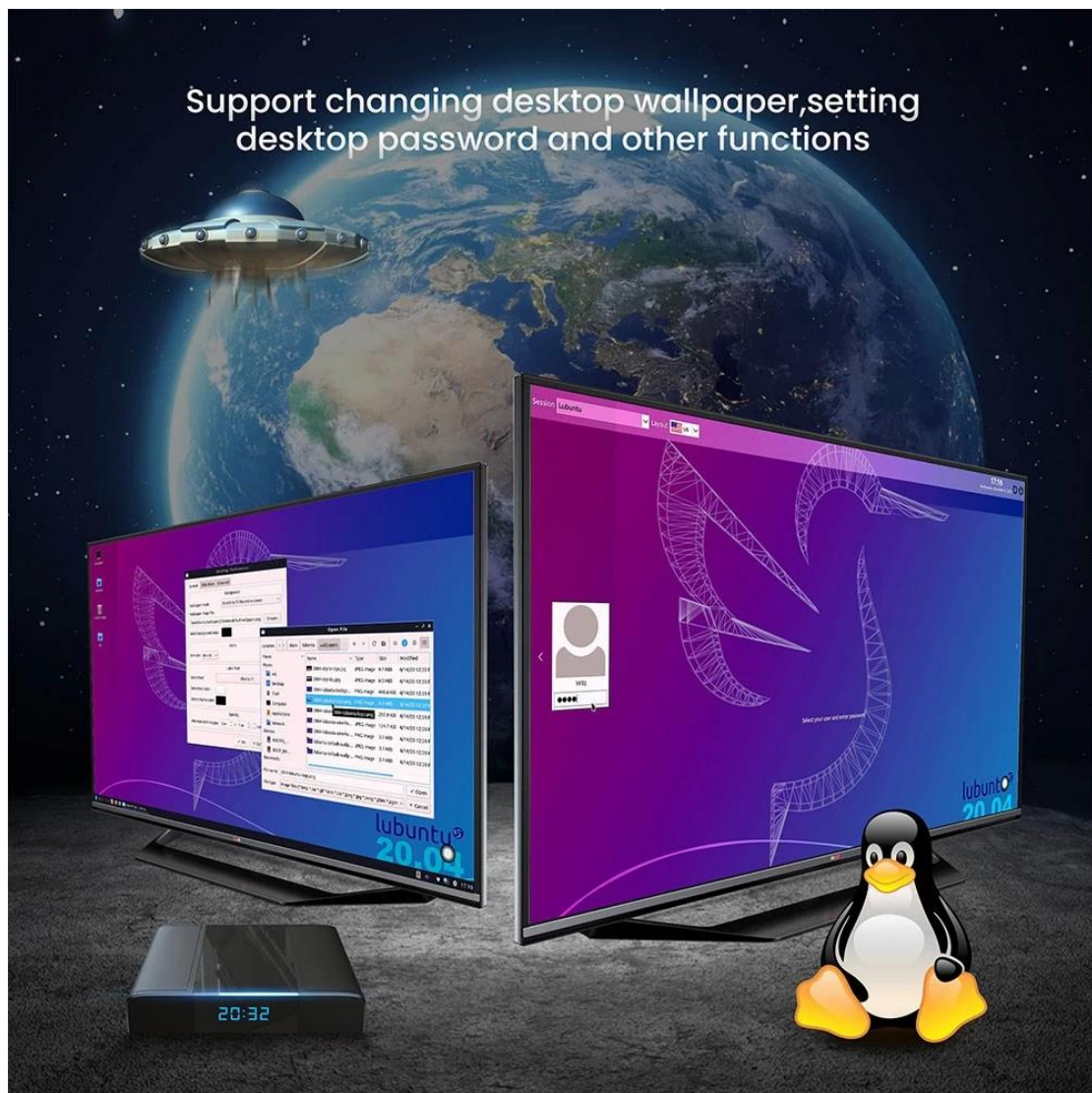


Application menus and file managers
make it easier to manage

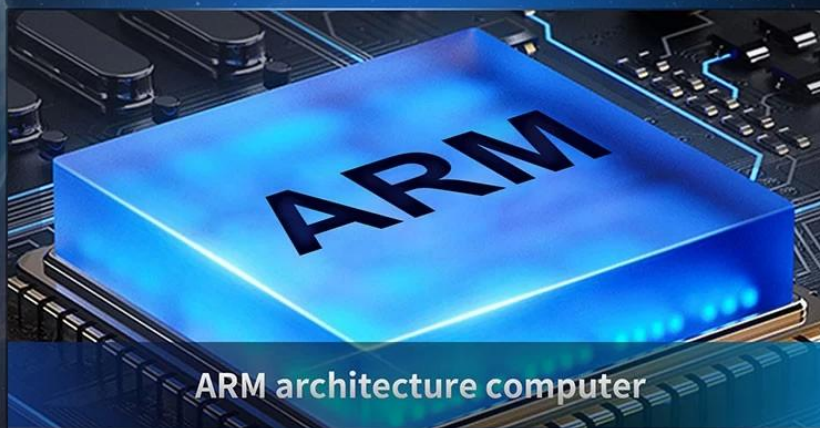
Linux



Support changing desktop wallpaper, setting
desktop password and other functions



What can do?





Package Contents



Power Adapter*1



HDMI Cable*1

Unlock Unmatched Entertainment with Our Linux-based TV Box

Our Linux-based TV Box redefines home entertainment, offering a wealth of features and capabilities to enhance your viewing experience. Here's why it's the perfect addition to your living room:

1. **Powerful Performance:** Powered by Linux operating system, our TV Box delivers lightning-fast performance and responsiveness for smooth streaming, gaming, and multitasking.
2. **Seamless Streaming:** Enjoy seamless streaming of your favorite movies, TV shows, and music with support for popular streaming services like Netflix, Hulu, Amazon Prime Video, and more.
3. **High-Definition Video:** Immerse yourself in stunning high-definition video with support for up to 4K resolution. Experience crystal-clear clarity and

vibrant colors for a cinematic viewing experience.

4. **Versatile Connectivity:** Connect to your TV, speakers, and other devices effortlessly with HDMI, USB, and audio ports. Enjoy seamless integration with your existing home theater setup.
5. **Advanced Features:** Our TV Box comes equipped with advanced features such as voice control, screen mirroring, and customizable interfaces for a personalized entertainment experience.
6. **Expandable Storage:** Store your favorite movies, music, and apps with ease thanks to expandable storage options. Simply connect an external hard drive or USB drive to access your media library.
7. **Easy Setup and Use:** Set up your TV Box in minutes with intuitive on-screen instructions. The user-friendly interface makes navigation a breeze, so you can spend less time setting up and more time enjoying your favorite content.
8. **Regular Updates:** Enjoy access to regular software updates and security patches to ensure your TV Box stays up-to-date with the latest features and improvements.

Transform your TV into a smart entertainment hub with our [Linux-based TV Box](#). Experience the ultimate in streaming, gaming, and multimedia capabilities for an immersive viewing experience like no other.