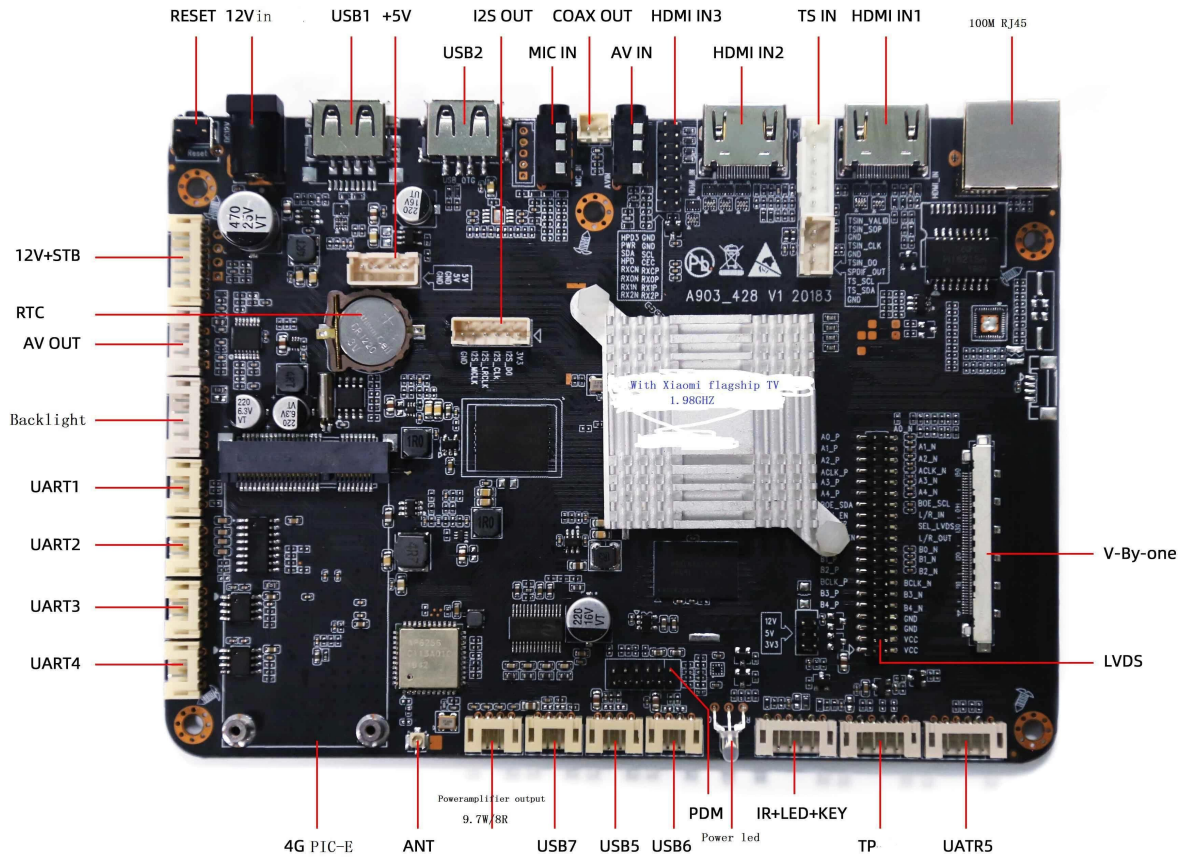
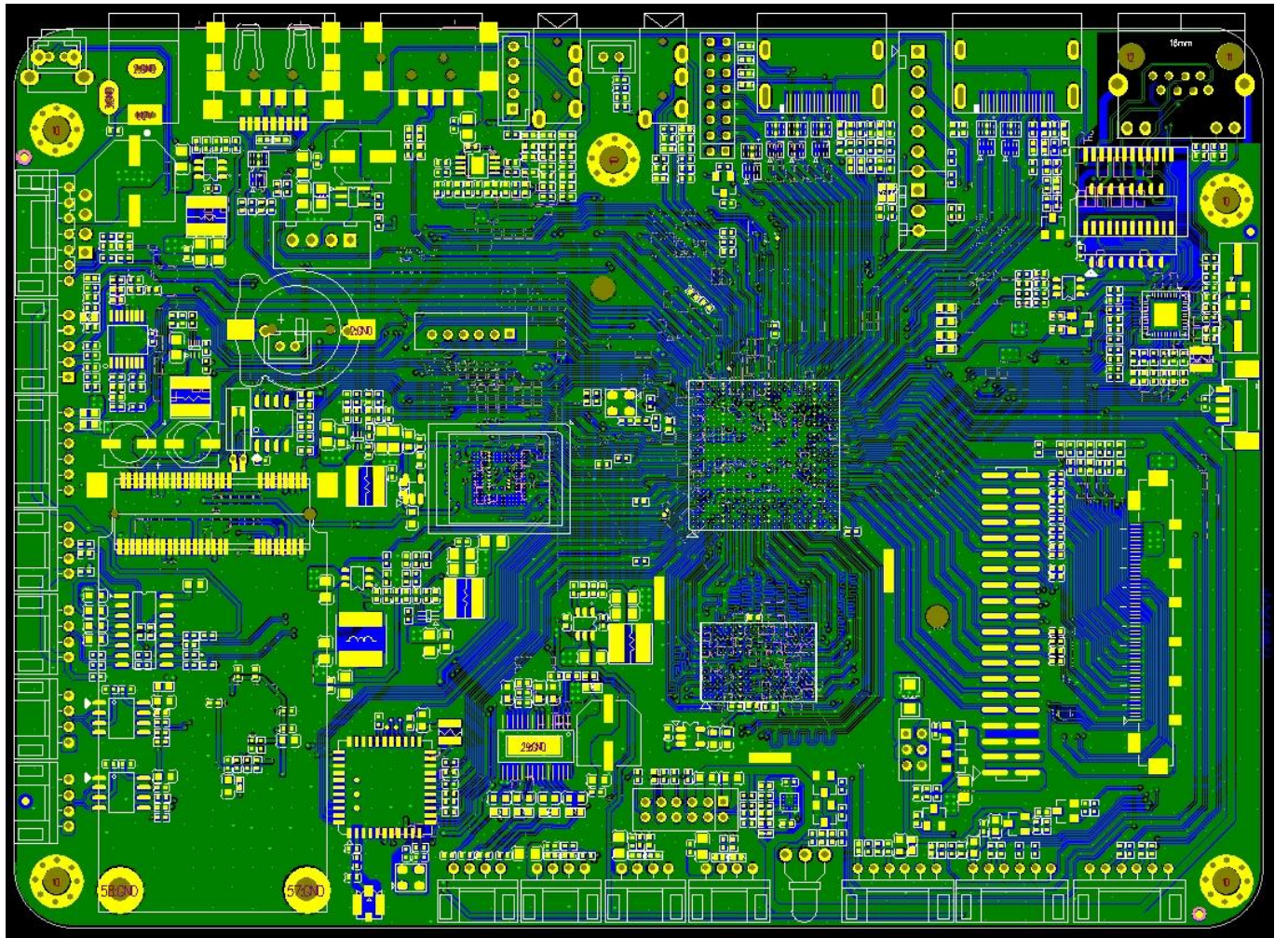


PCBA Development Board Amlogic T972 Android 9.0 with HDMI input & V-by-one 4K Screen for POS / Smart Home / Kiosk / Vending Machine/ LCD

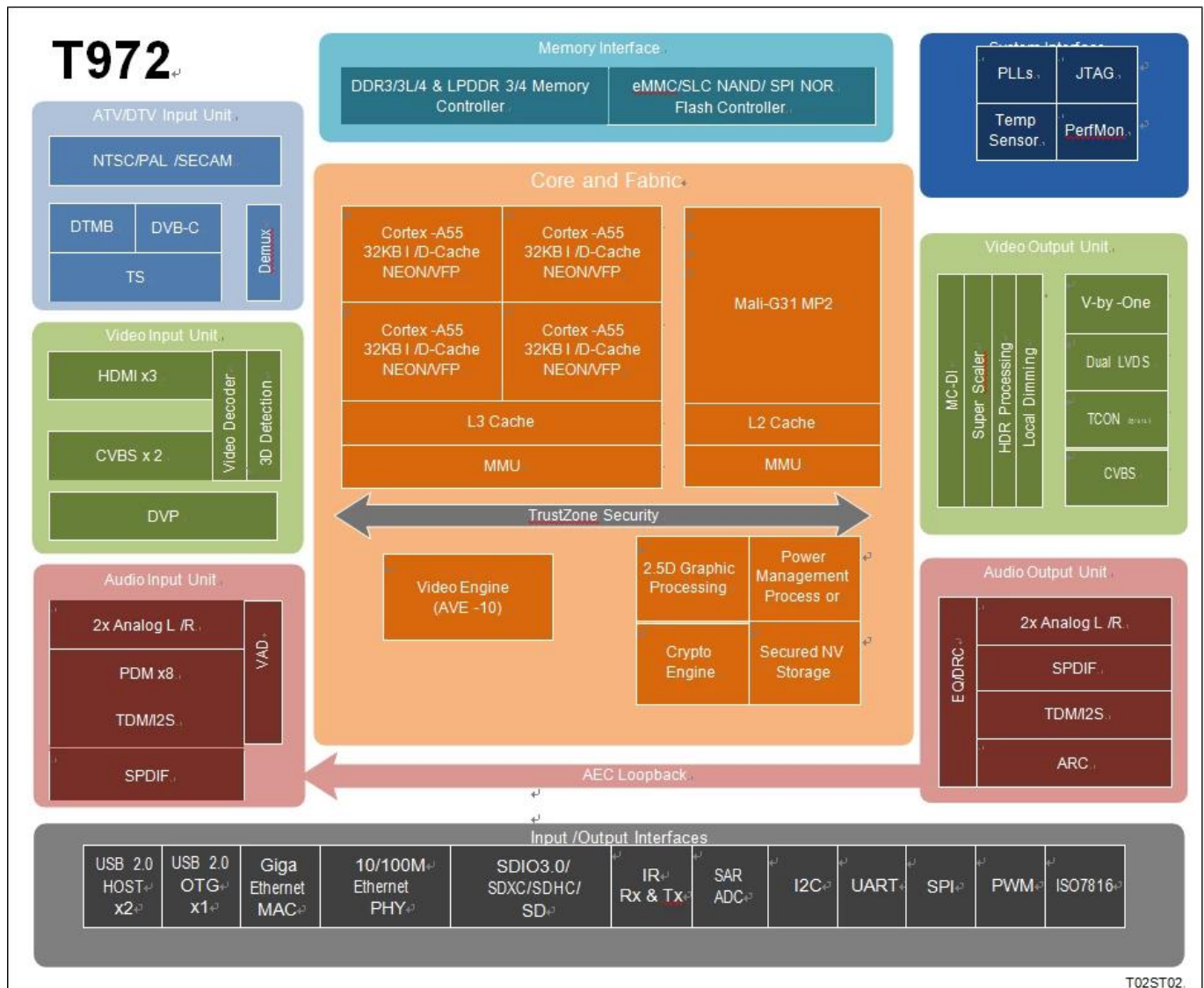
Specifications	
Model No.	Amlogic T972
CPU	Amlogic T972(T962X2) Quad Core ARM Cortex A55 1.98GHZ
GPU	Penta Core ARM Mail-450
RAM	DDR4 2GB/4GB (option)
ROM	16GB eMMC (can be expanded to 128GB via SD/USB)
OS	Android 9.0
Video&Audio CODEC	
Video/Picture CODEC	<ul style="list-style-type: none"> -Amlogic Video Engine (AVE-10) with dedicated hardware decoders up to 4Kx2K@75fps -Video/Picture Decoding -VP9 Profile 2-10 up to 8Kx4K@24fps or 4Kx2K@60fps -H.265 HEVC MP-10@L5.1 up to 8Kx4K@24fps or 4Kx2K@60fps -AVS2-P2 Profile up to 4Kx2K@60fps -H.264 AVC HP@L5.1 up to 4Kx2K@30fps -H.264 MVC up to 1080P@60fps -MPEG-4 ASP@L5 up to 1080P@60fps (ISO-14496) -WMV/VC-1 SP/MP/AP up to 1080P@60fps -AVS-P16(AVS+) /AVS-P2 JiZhun Profile up to 1080P@60fps -MPEG-2 MP/HL up to 1080P@60fps (ISO-13818) -MPEG-1 MP/HL up to 1080P@60fps (ISO-11172) -RealVideo 8/9/10 up to 1080P@60fps -Multiple language and multiple format sub-title video support -MJPEG and JPEG unlimited pixel resolution decoding (ISO/IEC-10918) -Supports JPEG thumbnail, scaling, rotation and transition effects -Supports *.mkv,*.wmv,*.mpg, *.mpeg, *.dat, *.avi, *.mov, *.iso, *.mp4, *.rm and *.jpg file formats
Video/Picture Encoding	<ul style="list-style-type: none"> -VP9 Profile 2-10 up to 8Kx4K@24fps or 4Kx2K@60fps -H.265 HEVC MP-10@L5.1 up to 8Kx4K@24fps or 4Kx2K@60fps -AVS2-P2 Profile up to 4Kx2K@60fps -H.264 AVC HP@L5.1 up to 4Kx2K@30fps -H.264 MVC up to 1080P@60fps -MPEG-4 ASP@L5 up to 1080P@60fps (ISO-14496) -WMV/VC-1 SP/MP/AP up to 1080P@60fps -AVS-P16(AVS+) /AVS-P2 JiZhun Profile up to 1080P@60fps -MPEG-2 MP/HL up to 1080P@60fps (ISO-13818) -MPEG-1 MP/HL up to 1080P@60fps (ISO-11172) -RealVideo 8/9/10 up to 1080P@60fps -Multiple language and multiple format sub-title video support -MJPEG and JPEG unlimited pixel resolution decoding (ISO/IEC-10918) -Supports JPEG thumbnail, scaling, rotation and transition effects -Supports *.mkv,*.wmv,*.mpg, *.mpeg, *.dat, *.avi, *.mov, *.iso, *.mp4, *.rm and *.jpg file formats
Audio CODEC and Input/Output	<ul style="list-style-type: none"> Supports MP3, AAC, WMA, RM, FLAC, Ogg, Dolby DTS Audio Optional and programmable with 7.1/5.1 down-mixing Low-power VAD and internal AEC loopback path 3 built-in TDM/PCM/I2S ports with TDM/PCM mode up to 384kHz x32bits x 8ch or 96kHz x32bits x 32ch and I2S mode up to 384kHz x 32bits x 8ch Digital microphone PDM voice input with programmable CIC, LPF & HPF, support up to 8 DMICs Built-in serial digital audio SPDIF/IEC958 output 2 L/R analog input channels and 2 L/R output channels Supports concurrent dual audio stereo channel output with combination of I2S+PCM Supports Audio EQ/DRC for audio speaker
Decoder Format	HD MPEG1/2/4, H.265/HEVC, HD AVC/VC-1, RM/RMVB, Xvid/DivX3/4/5/6, RealVideo8/9/10
Media Format	Avi/Rm/RmVb/Ts/Vob/Mkv/Mov/ISO/wmv/asf/flv/dat/mpg/mpeg
Music Format	MP3/WMA/AAC/WAV/OGG/DDP/TrueHD/HD/FLAC/APE
Photo Format	HD JPEG/BMP/GIF/PNG/TIFF
Port	
Audio Input	1* 3.5MM headphone jack
Video Output	1*LVDS 40pin 2.0mm double-row pin, support 8bit/10bit screen 1*V-By-one, for optional choice
Video Input	HDMI*3
Audio Output	4pin 2.5mm 10W8Q@2
Network port	*1 10M/100M RJ45 2.4G WIFI+BT (Dual band 2.4G/5G WiFi option) PCIE slot(4)x1
USB2.0 port	USB OTG*1(can be HOST) USB HOST*4
Backlight Interface	*2, 6pin 2.0mm
Infrared Interface	*1, 7pin 2.0mm, with LED indicator light (green&red)
Expansion ports	Serial ports*4
TF card slot	*1
SIM card slot	*1
Power	
Power Supply	STB, 5VSB, 5V, 12V, 12pin 2.00mm 12V / 4pin 2.54mm, 12V / 2.5DC plug











Amlogic T972 is an advanced application processor designed for worldwide UHD TV applications. It integrates a powerful CPU/GPU subsystem, a best-in-class HDR image processing pipeline, a secured 8K/4K video CODEC engine with all major peripherals to form the ultimate cost-effective smart TV chip.

The main system CPU is a quad-core ARM Cortex-A55 CPU with shared L3 cache to improve system performance. In addition, the Cortex-A55 CPU includes the NEON SIMD co-processor to improve software media processing capability.

The graphic subsystem consists of two graphic engines and a flexible video/graphic output pipeline. The ARM Mali-G31 MP2 GPU handles all OpenGL ES 3.2, Vulkan 1.1 and OpenCL 2.0 graphic programs, while the 2.5D graphics processor handles additional scaling, alpha, rotation and color space conversion operations. Together, the CPU and GPU handle all operating system, network, user-interface and game related tasks.

Amlogic Video Engine (AVE-10) is a subsystem which uses dedicated hardware video decoders and encoders to offloads the Cortex-A55 CPUs from all video CODEC processing. AVE-10 is capable of decoding 4K2K resolution video within Trusted Video Path (TVP) for secured DRM applications. It supports all major video formats including MVC, MPEG-1/2/4, VC-1/WMV, AVS +, AVS2, RealVideo, MJPEG, H.264, H265-10, VP9-10 and also JPEG.

The video/graphics output pipeline includes HDR10+, HDR10, HLG and Technicolor Prime HDR processing, BT.2020/ BT.2100 processing, motion compensated and motion adaptive de-interlacer, flexible programmable super scalar, local dimming and many picture enhancement filters before passing the enhanced image to the video output ports. The 8-lane V-by-one and dual-channel LVDS

interface are available for UHD/FHD TV panel and 12-lane P2P interface with internal flexible timing control module Optional for UHD TCON-less panels including CEDS, CHPI, CMPI and iSP.

3 HDMI 2.1 receiver ports plus two sets of CVBS composite analog input ports are available. The HDMI ports support HDCP 1.4/2.2 and can receive up to 4K2K HDR video.

Amlogic T972 integrates the ATV demodulators which fully support worldwide analog TV standards including NTSC, PAL, and SECAM. DTV broadcasting streams can be received by the internal DTMB demodulator or the transport stream (TS) interface. The built-in three demux can process the TV streams from the serial transport stream input interface, which can connect to external tuner/demodulator. DVB Common Descrambler 1.0 is supported in addition to DES, Triple DES (TDES/3DES) and AES streaming crypto formats. An integrated ISO7816 controller is included for interfacing to external smart card.

Amlogic T972 is optimized for low power far-field voice application. The powerful main CPU can enable top of the line audio front end and wake word algorithms. It also has built-in Voice Activity Detection (VAD) module for ultra-low power operations during system standby and full digital MIC interface including PDM, TDM and I2S up to 8 channels are available.

Amlogic T972 SoC integrates rich advanced network and peripheral interfaces, including a 10/100/1000M Ethernet MAC with RGMII, 10/100M Ethernet PHY, USB 2.0 high-speed port, SDIO 3.0 controller, eMMC 5.0 controller, SLC NAND controller and multiple SDIO/SD card controllers, UART, I2C, high-speed SPI PWMs and a built-in IR blaster. The flexible and programmable QoS-based switch fabric and memory controller tie all the processing cores and peripherals together and connects to the DRAM memory bus.

Standard development environment utilizing SecureOS, Linux and GNU/GCC Android tool chain is supported. Please contact your AMLOGIC sales representative for more information.

CPU Sub-system

Quad core ARM Cortex-A55 CPU

ARMv8.2 architecture with Neon extensions

Unified system L3 cache

Advanced TrustZone security system

Application based traffic optimization using internal QoS-based switching fabrics

CoreSight debugger support

3D Graphics Processing Unit

ARM Mali-G31 MP2 GPU

4-wide warps, dual texture pipe, 2x 4-wide execution engines (EE)

Concurrent multi-core processing

OpenGL ES 3.2, Vulkan 1.1 and OpenCL 2.0 support

2.5 D Graphics Processor

Fast bitblt engine with dual inputs and single output

Programmable raster operations (ROP)

Programmable polyphase scaling filter

Supports multiple video formats 4:2:0, 4:2:2 and 4:4:4 and multiple pixel formats (8/16/24/32 bits graphics layer)

Fast color space conversion

Advanced anti-flickering filter

Crypto Engine

AES block cipher with 128/256 bits keys, standard 16 bytes block size and streaming ECB, CBC and

CTR modes

DES/3DES block cipher with ECB and CBC modes supporting 64 bits key for DES and 192 bits key for 3DES

Hardware key-ladder operation and DVB-CSA for transport stream encryption

Built-in hardware True Random Number Generator (TRNG) and SHA-1/SHA-2 engine

Video/Picture CODEC

Amlogic Video Engine (AVE-10) with dedicated hardware decoders up to 4Kx2K@75fps

Video/Picture Decoding

VP9 Profile 2-10 up to 8Kx4K@24fps or 4Kx2K@60fps

H.265 HEVC MP-10@L5.1 up to 8Kx4K@24fps or 4Kx2K@60fps

AVS2-P2 Profile up to 4Kx2K@60fps

H.264 AVC HP@L5.1 up to 4Kx2K@30fps

H.264 MVC up to 1080P@60fps

MPEG-4 ASP@L5 up to 1080P@60fps (ISO-14496)

WMV/VC-1 SP/MP/AP up to 1080P@60fps

AVS-P16(AVS+) /AVS-P2 JiZhun Profile up to 1080P@60fps

MPEG-2 MP/HL up to 1080P@60fps (ISO-13818)

MPEG-1 MP/HL up to 1080P@60fps (ISO-11172)

RealVideo 8/9/10 up to 1080P@60fps

Multiple language and multiple format sub-title video support

MJPEG and JPEG unlimited pixel resolution decoding (ISO/IEC-10918)

Supports JPEG thumbnail, scaling, rotation and transition effects

Supports *.mkv,*.wmv,*.mpg, *.mpeg, *.dat, *.avi, *.mov, *.iso, *.mp4, *.rm and *.jpg file formats

9th Generation Advanced Amlogic TruLife Image Engine

Supports HDR10/10+, HLG, Technicolor Prime HDR

Motion compensated noise reduction and 3D digital noise reduction for random noise

Block noise, mosquito noise, spatial noise, contour noise reduction

Motion compensated and motion adaptive de-interlacer

Edge interpolation with low angle protection and processing

3:2/2:2 pulldown and Video on Film (VOF) detection and processing

Smart sharpness with SuperScaler technology including de-contouring, de-ring, LTI, CTI, de-jaggy, peaking

Local contrast and dynamic non-Linear contrast for detail enhancement

3D LUTs with 17x17x17 nodes, provide 4913 different control points, which is competent for matching calibrated displays to a target colorspace

High precision HSL color space based color management with low saturation protection, independent luma/hue/saturation adjustment to achieve blue/green extension, fresh tone correction, and wider gamut for video

Video mixer: 2 video planes and 2 graphics planes

Independent HDR re-mapping of video and graphic layer

Local dimming control for high nits backlights

LCD Panel Output

8-lane V-By-One output with 1, 2, 4 regions supported, up to 4Kx2K 60Hz resolution

Dual-channel LVDS output supporting up to 1920x1080 60Hz resolution

Built-in (1-port 6-pair)/(2-port 3-pair) mini-LVDS output with programmable HD/FHD timing controller Optional up to 1920x1080Hz resolution

12-lane CEDS/CHPI/CMPI/iSP output with programmable UHD timing controller Optional for UHD TCON-less panel, up to 4Kx2K 60Hz resolution

Three independent Gamma table for LCD panel tuning
Dithering logic for mapping to different LCD panel color depth

Video Input/output Interface

3x HDMI 2.1 receiver ports with Dynamic HDR, ARC, HDCP 1.4 /2.2, 4Kx2K@60 max resolution input
2x CVBS 480i/576i standard definition inputs
Supports CVBS (PAL/NTSC) bypass output
ITU 601/656 parallel camera input supporting 8-bit RGB565, CCIR656, CCIR601, YUV422, YCbCr422

Audio CODEC and Input/Output

Supports MP3, AAC, WMA, RM, FLAC, Ogg, Dolby DTS Audio Optional and programmable with 7.1/5.1 down-mixing
Low-power VAD and internal AEC loopback path
3 built-in TDM/PCM/I2S ports with TDM/PCM mode up to 384kHz x32bits x 8ch or 96kHzx 32bits x 32ch and I2S mode up to 384kHz x 32bits x 8ch
Digital microphone PDM voice input with programmable CIC, LPF & HPF, support up to 8 DMICs
Built-in serial digital audio SPDIF/IEC958 output
2 L/R analog input channels and 2 L/R output channels
Supports concurrent dual audio stereo channel output with combination of I2S+PCM
Supports Audio EQ/DRC for audio speaker

TV Demodulator

Standard compliant NTSC, NTSC-J, PAL-BG, PAL-DK1, PAL-I, PAL-DK, PAL-M, PAL-N, SE- CAM-DK2, SECAM-DK3, SECAM-L ATV demodulators
Worldwide analog TV audio standard: BTSC, A2, EIA-J and NICAM
Supports Teletext, close caption, V-chip
DTMB/DVB-C/ DTV demodulators
Build-in VIF demodulator supports low IF interface from tuner module

DTV Broadcasting Interface

3x Transport stream (TS) input interface with built-in demux processor for connecting to external digital TV tuner/demodulator
Built-in PWM, I2C and SPI interfaces to control tuner and demodulator
Integrated ISO 7816 smart card controller

Memory and Storage Interface

32-bit DRAM memory interface with dual ranks and max 4GB total address space
Compatible with JEDEC standard DDR3-2133 /DDR3L-2133 /DDR4-2666 /LPDDR3-2133 /LPDDR4-3200 SDRAM
SDSC/SDHC/SDXC card and SDIO interface with 1-bit and 4-bit data bus width supporting spec version 2.x/3.x/4.x DS/HS modes up to UHS-I SDR104
eMMC memory interface with 1/4/8-bit data bus width fully supporting spec version 5.0 HS400
SLC NAND Flash controller
Built-in 4K bits OTP memory for secured key storage

Network Interface

IEEE 802.3 10/100/1000M Ethernet MAC with RGMII interface
10/100M Ethernet PHY interface
WiFi/IEEE802.11 supporting via USB or SDIO

Bluetooth supporting via USB or UART
Network interface optimized for mixed WIFI and BT traffic

Integrated I/O Controllers and Interfaces

Triple USB 2.0 high-speed USB I/O, two USB Hosts and one USB OTG
Multiple UARTs, I2Cs and PWMs SPI interface
Programmable remote control input circuitry and IR-blaster output
Built-in 10bit SAR ADC with 4 input channels
General Purpose IOs with built-in pull up and pull down
System, Peripherals and Misc. Interfaces
Integrated general purpose timers, counters, DMA controllers
24 MHz crystal input
Embedded debug interface using ICE/JTAG

Power Management

Multiple internal power domains controlled by software
Multiple sleep modes for CPU, system, DRAM, etc.
Multiple internal PLLs to adjust the operating frequencies
Multi-voltage I/O design for 1.8V and 3.3V

Security

Trustzone based Trusted Execution Environment (TEE)
Secured boot, encrypted hardware self-setup OTP, encrypted DRAM with memory integrity checker,
hardware key ladder and internal control buses and storage
Separated secure/non-secure Entropy true RNG
Pre-region/ID memory security control and electric fence
Hardware based Trusted Video Path (TVP), and secured contents (needs SecureOS software)
Secured IO and secured clock

Package

FCBGA, 19 mm x 19 mm, 0.65 ball pitch, RoHS compliant

Transform your projects with our PCBA Development Board, powered by the advanced Amlogic T972 chipset and running on the versatile Android 9.0 platform. With its HDMI input and V-by-one 4K screen support, this board is designed to unlock innovation across a wide range of applications, including POS systems, smart home devices, interactive kiosks, vending machines, and LCD displays.

At the heart of our PCBA Development Board lies the powerful Amlogic T972 chipset, renowned for its performance, efficiency, and multimedia capabilities. With quad-core processing and advanced GPU performance, this chipset delivers smooth operation and seamless playback of high-definition content, ensuring a superior user experience in any application.

The inclusion of Android 9.0 on our PCBA Development Board provides a familiar and flexible platform for development, allowing you to leverage a wide range of software tools and libraries to bring your ideas to life. Whether you're developing custom applications for POS systems, smart home automation, interactive kiosks, or digital signage, this board offers the versatility and performance you need to succeed.

One of the key features of our PCBA Development Board is its HDMI input, which allows for easy integration with external devices such as cameras, sensors, or multimedia players. This feature enables you to create interactive and dynamic experiences for your users, whether you're

implementing facial recognition for security applications, integrating multimedia content for advertising displays, or connecting external devices for data collection and analysis.

Additionally, the V-by-one 4K screen support on our PCBA Development Board ensures compatibility with a wide range of LCD displays, allowing you to deliver stunning visuals and engaging content to your audience. Whether you're creating vibrant digital signage displays, immersive gaming experiences, or interactive touchscreens, this board provides the flexibility and performance you need to make your vision a reality.

Our PCBA Development Board is designed with ease of use and flexibility in mind, featuring a compact form factor and comprehensive connectivity options to suit your specific requirements. With its support for Wi-Fi, Bluetooth, Ethernet, USB, and GPIO interfaces, you can easily connect to your network and peripherals, allowing for seamless integration into your existing infrastructure.

In summary, our PCBA Development Board Amlogic T972 Android 9.0 with HDMI input and V-by-one 4K screen support is the perfect solution for unlocking innovation in POS, smart home, kiosk, vending machine, and LCD applications. With its powerful chipset, flexible platform, and comprehensive connectivity options, it offers everything you need to bring your projects to life and stay ahead in today's competitive market.