

Quad Core TV Box Amlogic S805 H265 Decode Media Player MXQ2



Amlogic S805 Quad Core Cortex-A5 Support Bluetooth™ 4.0





Hardware Specifications

| | |
|-----------|---|
| Model No. | MXQ2 |
| CPU | Amlogic S805 Quad Core Cortex-A5@1.5GHz |
| GPU | Quad Core Mali™ -450@600MHz+ |
| FLASH | 8GB NAND FLASH |
| SDRAM | 1GB DDR3 |

Power Supply Specifications

| | |
|-----------------------|------------------------------|
| Power Supply | DC 5V/2A |
| Power Indicator (LED) | Power ON :blue; Standby :Red |

Main Features

| | |
|------------------------------|--|
| OS | Android™ 4.4 |
| 3D | Hardware 3D Graphics Acceleration |
| Support Decoder format | HD MPEG1/2/4, H.265 , HD AVC/VC-1, RM/RMVB, Xvid/DivX3/4/5/6, RealVideo8/9/10 |
| Support Media format | Avi/Rm/Rmvb/Ts/Vob/Mkv/Mov/ISO/wmv/asf/flv/dat/mpg/mpeg |
| Support Music format | MP3/WMA/AAC/WAV/OGG/AC3/DDP/TrueHD/DTS/DTS/HD/FLAC/APE |
| Support Photo format | HD JPEG/BMP/GIF/PNG/TIFF |
| USB host | 2 High Speed USB 2.0, Support U DISK and USB HDD |
| Card reader | TF Card |
| HDD file system | FAT16/FAT32/NTFS |
| Support Subtitle | SRT/SMI/SUB/SSA/IDX+USB |
| High Definition video output | SD/HD max.1920x1080 pixel |
| OSD type of languages | English/French/German/Spanish/Italian/ etc multilateral languages |
| LAN | Ethernet:10/100M, Standard RJ-45 |
| Wireless | Built in WiFi™ |
| Bluetooth™ | Support Bluetooth™ 4.0 |
| Mouse/Keyboard | Support mouse and keyboard via USB; Support 2.4GHz wireless mouse and keyboard via 2.4GHz USB dongle |
| HDMI™ | HDMI™ 1.4b With CEC |
| AV | Support |

3G

Support

SPDIF/IEC958

Coaxial

Software Specifications

Network Function

XBMC,Skype chatting,Picasa,Youtube,Flicker,Facebook,Online movies,etc

Other feature

Free Internet searching,thousands of android applications,many kinds of games,etc.



Picture Show





- Black color: available now and enough stocks
- Red/Grey/Blue colors: **OEM**



Root Checker

Device: MXQ
Android: 4.4.2 | API: 19

Check Now

Status: Rooted

Id: uid=0(root) gid=0(root)

Superuser: Not found

Busybox: /system/xbin/busybox

Su Location: /system/xbin/su

Sudo Location: Not found

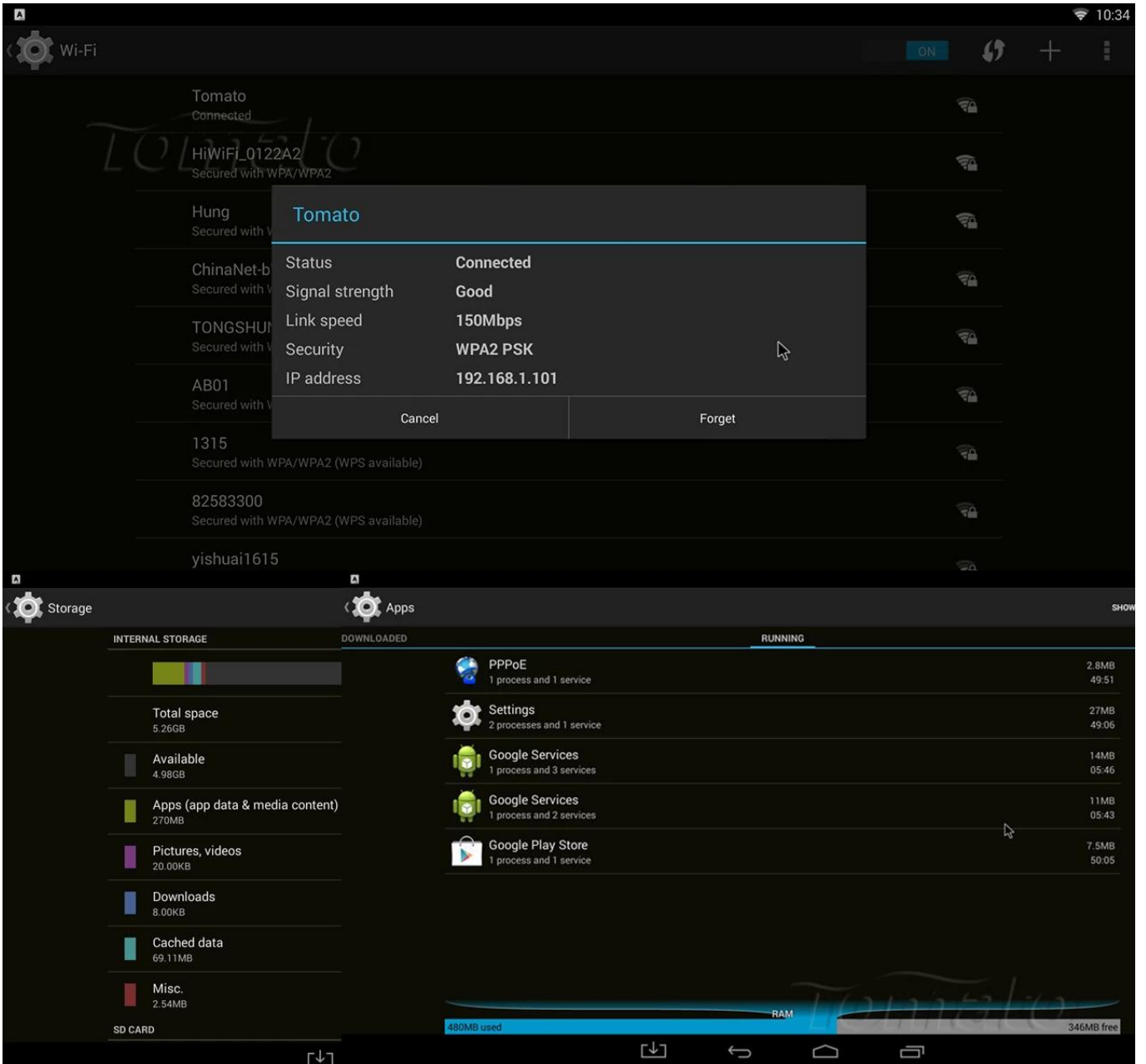
Environment Vars.:
/sbin/
/vendor/bin/
/system/sbin/
/system/bin/
/system/xbin/

CPU-Z CPU-Z SOC SYSTEM BATTERY SENSORS ABOUT CPU-Z SOC SYSTEM BATTERY SENSORS ABOUT

| | |
|---------------------|---------------------------|
| Model | MXQ(MXQ) |
| Manufacturer | MBX |
| Board | MXQ |
| Display | KOT49H.20140903 test-keys |
| Hardware | amlogic |
| Android Version | 4.4.2 |
| Kernel Architecture | armv7l |
| Kernel Version | 3.10.33 (20140903) |
| Screen Resolution | 1920 x 1008 |
| Screen Density | 240 dpi |
| Total RAM | 825 MB |
| Available RAM | 244 MB (29%) |
| Internal Storage | 5.26 GB |
| Available Storage | 4.98 GB (94%) |
| Root Access | Yes |

Cortex ARM Cortex-A5
Intelligent Processors by ARM®
1.49 GHz

| | |
|------------------|-------------------|
| CPU Architecture | ARM Cortex-A5 |
| Cores | 4 |
| Revision | r0p1 |
| Clock Speed | 24 MHz - 1.49 GHz |
| Core 0 | 1488 MHz |
| Core 1 | 1488 MHz |
| Core 2 | 1488 MHz |
| Core 3 | 1488 MHz |
| CPU Load | 11 % |
| GPU Vendor | ARM |
| GPU Renderer | Mali-450 MP |



SETTINGS



Network



Display



Advanced



Other



Miracast

Remote Control

OFF

CEC Control

Location

Shanghai

Shanghai

Application request to change orientation



Keep landscape mode on home screen



Digital audio auto-detection

OFF

Digital Audio Output

PCM



About MediaBox

10:33

System updates

Status

Status of network and other information

Legal information

Model number

hd18q

Android version

4.4.2

Kernel version

3.10.33

tao.jiang@wyst #10

Wed Sep 3 10:13:24 CST 2014

Build number

KOT49H.20140903 test-keys

Ethernet Infor

IP address,DNS,MAC address,etc.