

# 2015 Hot Sale G9C Quad Core Android 5.1

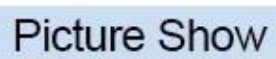
## Amlogic S905 4K TV Box

Amlogic S905 Quad Core WiFi Device Smart Box  
Watch TV Channels Through Wifi or Internet



General Information	
Model	G9C
CPU	Amlogic S905 Quad Core Cortex A53 CPU 2.0GHz (DVFS)
GPU	MALI-450 750MHz
Storage	8GB EMMC
SDram	1GB DDR3
Power & Interface	
Power Supply	DC 5V/2A
LED Indicator	Power: Red; Status: Green
Software & Features	
OS	Android 5.1
3D	3D-HD 1080p2
Video Support	HD MPEG1/2/4, H.264/H.265, HD avC/VC-1, RM/RMVB, XVID/DIVX3/4/5/6, RealVideo8/9/10, HEVC MP-10
Audio Support	AVI/RM/RMVB/TS/VOB/MKV/MOV/ISO/WMV/ASF/FLV/DAT/MPG/MPEG/MP4
Image Support	MP3/WMA/AAC/WAV/OGG/AC3/DDP/TRUEHD/DTS/DTS/HD/FLAC/APE
File Support	HD JPEG/BMP/GIF/PNG/TIFF
USB	2x USB 2.0, 1x U Disk, 1x USB HDD
Storage	SD /sdhc/mmc
HDD	FAT16/FAT32/NTFS
Subtitle	SRT/SMI/SUB/SSA/IDX/USB
Display	SD/HD/4K2K Ultra HD
OSD	On-Screen Display
Network	1000m, RJ-45 (IEEE 802.3 10/100/1000)
Bluetooth	IEEE802.11 B/G/N BLUETOOTH 4.1EDR
Wireless	USB Dongle 2.4GHz USB Dongle 2.4GHz
HDMI	HDMI 2.0 (CEC HDCP 2.2), 4K X 2K @60 fps
AV	AV
3g	3g
SPDIF/IEC958	SPDIF/IEC958
IPTV/OTT	IPTV/OTT
Applications	
Supported Apps	Miracast, Kodi, Airplay, Skype, Picasa, YouTube, Flickr, Facebook, etc.

1 \* □□□ □□□





Micro SD Card

USB

USB



AV Port

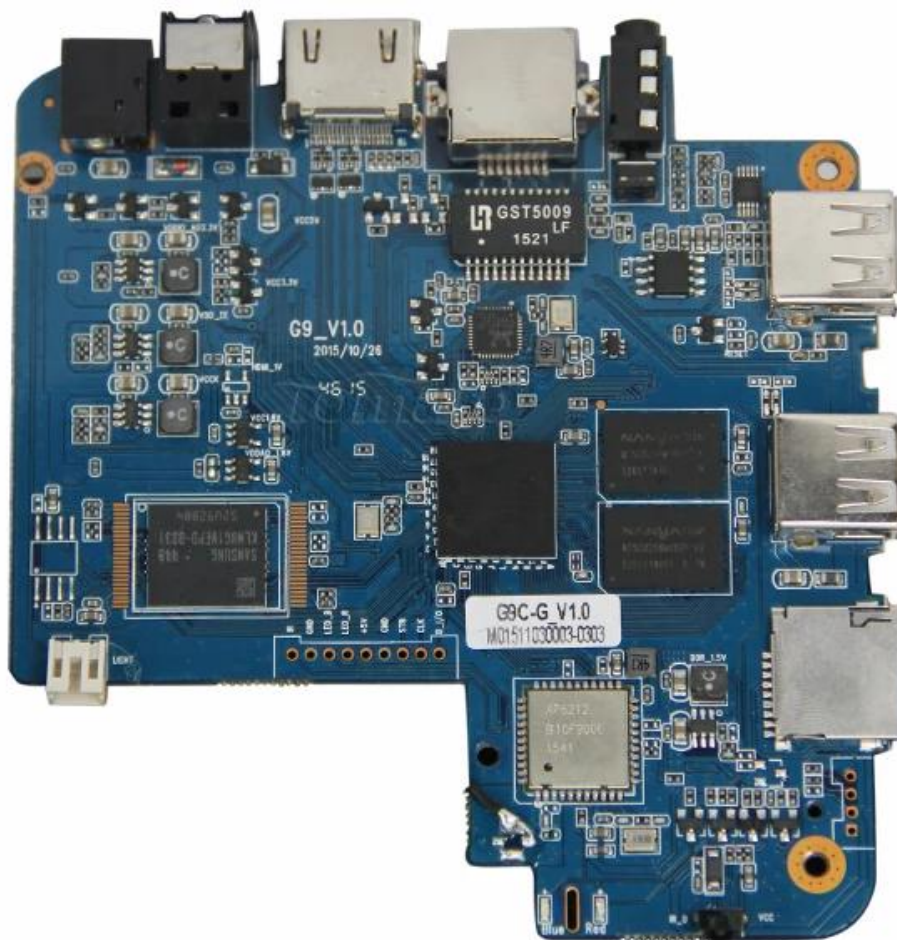
RJ 45 ETHERNET

HDMI™

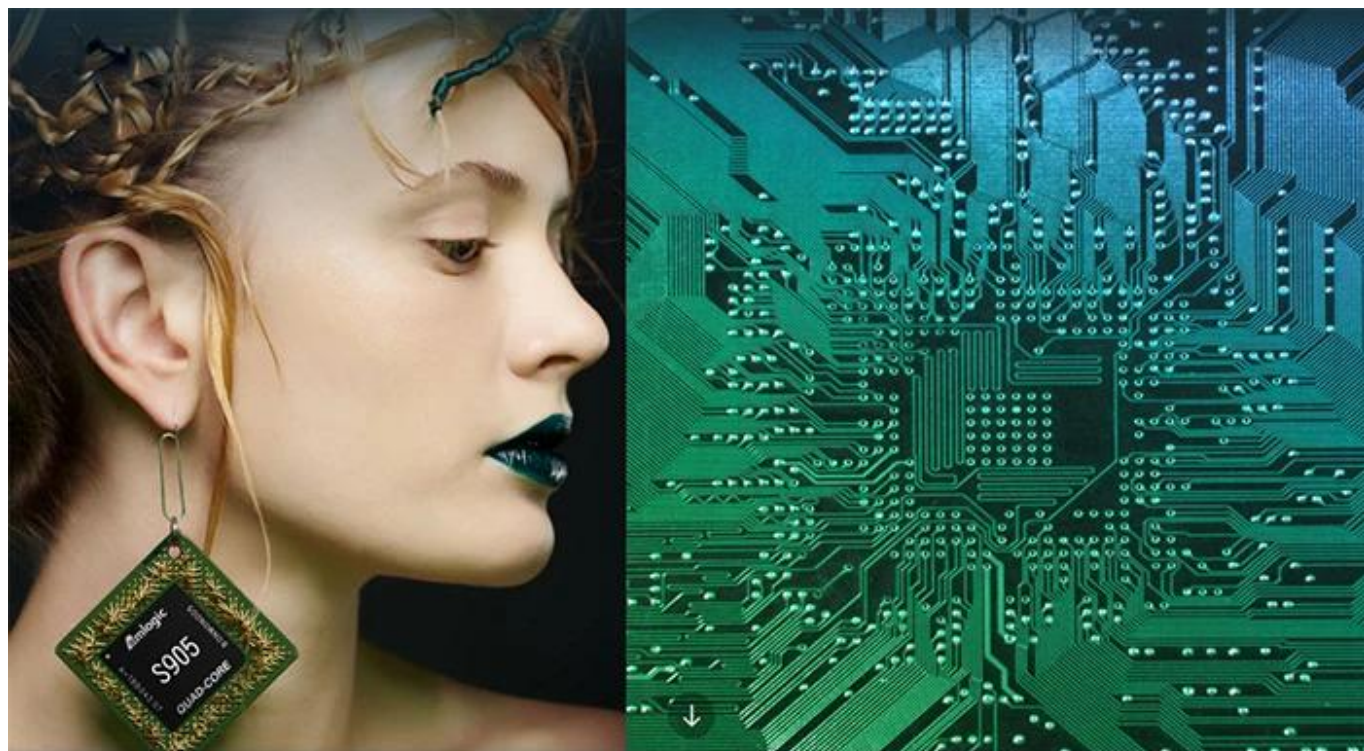
Optical Port

Power Port









# S905

**64-Bit  
Quad Core  
Cortex A53**

**4K**

**H.265  
@60fps**

**HDMI 2.0  
HDCP 2.2**

**TSMC  
28NM**

**DRM**

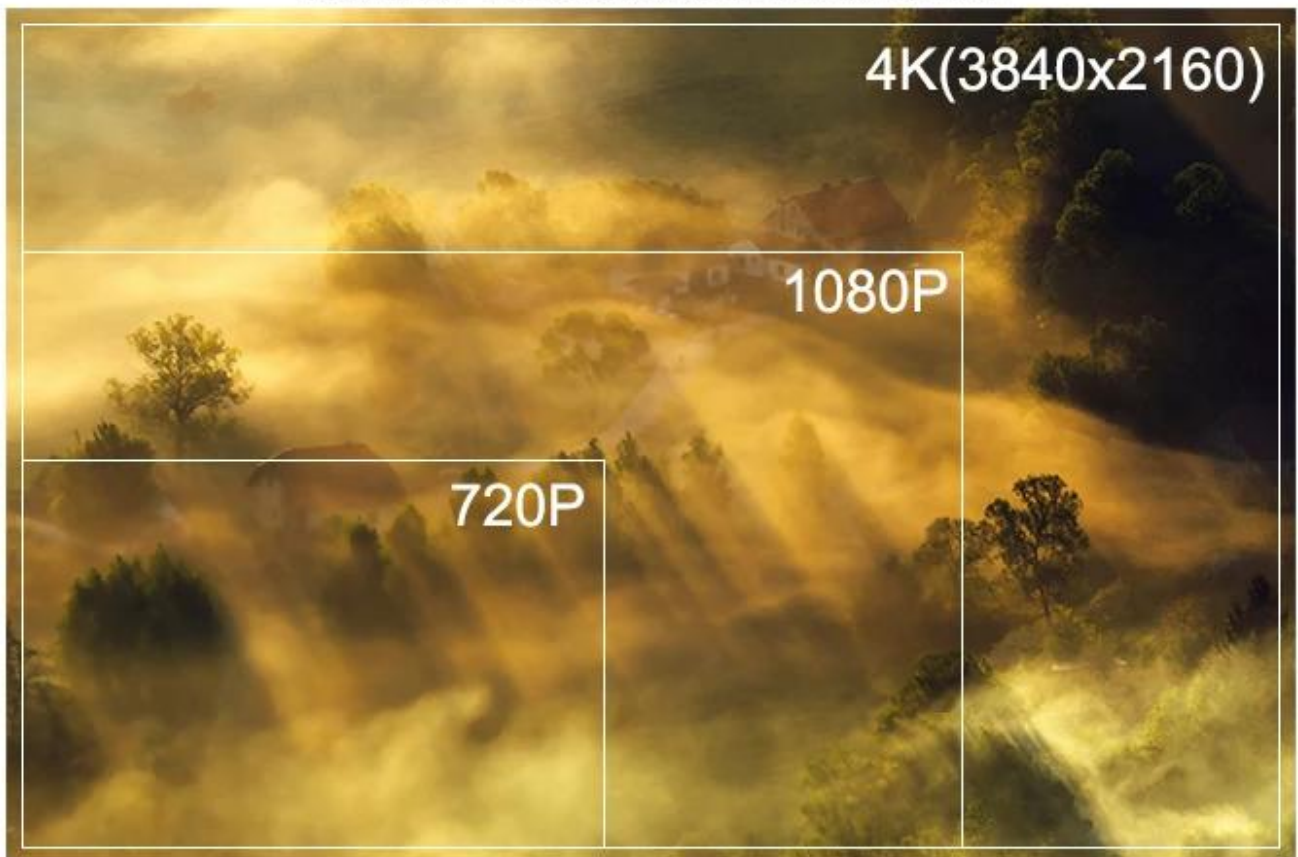


64 bit CPU,

While maintaining the same power consumption, the computing power of CPU has also been greatly improved.

---

With 4K2K decoding capabilities,  
it make 4K become the standard.



---

**The color quantity is increase by 60 times  
more than the previous generation.**



10 bit decoding, it could highest support 1.07 billion color,  
Compared to the previous generation of 16.7 million colors, it increase by 60 times.

---

**The sound upgrade,  
while supporting Dolby Digital Plus and DTS.**





3 + 2 core high-frequency GPU,  
it make the TV turn into the PlayStation.



The single core CPU frequency increase of 25%, 5-core computing speed can be achieved by the previous generation 8-core, it allowing you to experience smooth gaming.

Support 802.11ac WiFi protocol.

200 Mbps  
实测速率

120 Mbps  
上一代实测速率



**Wireless projection the image&video  
of the phone/computer onto the TV.**



Miracast



Airplay



DLNA



SMB

共享协议



Intel® WiDi

**Equipped with smart contiguous  
memory allocation technology,  
make the system running more smoothly.**



---

# 4.1



# Bluetooth<sup>®</sup>

---



HD2.0  
Image output



HD1.0  
Image output

Home entertainment, perfect enjoyment

- Extreme graphics, HD2.0 Image output
  - 1000M Ethernet LAN
-



Unforgettable visual  
experience.

1920 \* 1080 HD



Support 3D



1080P



Ultra Wide Vision

---

It's all about speeding up.



1G DDR3 dual channel memory and 8GB eMMC high speed flash memory.

The dual channel memory runs 1080p HD videos and large games flawlessly,  
while the eMMC high speed flash memory controls apps, games, and multi-media storage with ease.



A large flat-screen TV is shown, displaying a vibrant racing game. The screen depicts a yellow Ferrari sports car in the foreground, racing on a city street towards a green sports car in the distance. The background features a stylized cityscape with tall buildings under a bright, hazy sky. In front of the TV, a pair of black-rimmed sunglasses is placed on the surface.



## S905

One of industry's first multimedia SoCs with 64-bit architecture, S905 is designed to deliver immersive theatre-level home entertainment to the users with excellent audio and video processing capabilities. It also supports operator-level security and is a perfect choice for OTT/IPTV/DVB STB, TV dongle and smart home applications.

በ **HD** ስራው ላይ በ **TV** ስራው ላይ **HD** ስራው ይገኛል፡፡ በዚህ ስራ, **TV** ስራው በሰው ስራው ላይ ይገኛል፡፡ በዚህ ስራ ላይ በሰው ስራው ላይ ይገኛል፡፡

