

# Amlogic S905 四核四核 5.1 1G 8G 4K 2K UHD 电视盒子 S9

S9

## Amlogic S905 Quad Core S9

New! Amlogic S905 Quad Core ARM Cortex™-A53 CPU  
up to 2.0 GHz, 1GB/8GB H.265 4K2K Android 5.1 TV Box!

---



64  
S905

1GB  
8GB



DLNA  
CERTIFIED

H.265  
HEVC





4k2k



Android 5.1

FULL HD  
1080P

规格	
型号	S9
CPU	Amlogic S905 四核四核 Cortex™-A53 CPU 最高 2.0 GHz (DVFS)
GPU	Mali-450 最高 750 Mhz + Mali-450
内存	8 GB
DDR3	1 GB DDR3
Module	定制: 定制
电源	
电源	DC 5V/2A
功耗 (LED)	LED 功耗, 待机: 功耗, 待机: 功耗: < 0.5 w
兼容性	
操作系统	Android™ 5.1 定制
兼容性	H.265 HEVC MP-10@L5.1 4Kx2K@60fps H.264 AVC HP™ @L5.1 4Kx2K@30fps H.264 1080P@60fps MVC MPEG-4 ASP@L5 1080P@60fps (ISO-14496) WMV/VC-1 SP/MP/AP 1080P@60fps AVS-P16(AVS+) / 1080P@60fps AVS-P2 MPEG-2 1080P@60fps (ISO 13818) MP/HL M P E G-1 1080P@60fps (ISO-11172) MP/HL 1080P 8/9/10 WebM VGA MJPEG JPEG Decoding(ISO/IEC-10918) * .mkv, *.mpg, *.mpeg, *.dat, *.avi, *.mov, *.iso, *.mp4, *.rm *.jpg
音频	DSP 定制 MediaCPU MP3, AAC, WMA, RM, FLAC, Ogg 5.1 SPDIF/IEC958 PCM
图像	HD JPEG, BMP, GIF, PNG, TIF
接口	定制: 定制
I/O	
1 * HDMI™	K * 2 4k UHD, HDMI™ 2.0
1 * AV	480i/576i
3 * USB	2 * USBHost, 1 * USB
1 * RJ45	定制: 定制, 1000 M
1 * SD™ / MMC	定制: 4GB/8GB/16GB/32GB/64GB
Applications	
兼容性	定制: 定制 Flixster Netflix, Hulu, 定制: 定制.
兼容性	定制: 定制 定制: 定制.
兼容性	定制: 定制, 定制 HDD, U Disc, SD™ / MMC.

网络接口	支持有线网络接口，MSN, 支持 802.11n, QQ 等。
其他接口	支持 DLNA 接口 支持 2.4 G 有线网络/无线

特点:

**Amlogic S905** 芯片，支持 Wi-Fi 接口，支持 2.4 g h z 有线网络，支持 HD1080p 高清视频，PPPOE, DLNA, Miracast, USB 接口等。

配置清单?

- 1 \* Amlogic S905 芯片
- 1 \* HDMI 接口
- 1 \* 网络接口
- 1 \* 有线接口
- 1 \* 无线接口



# Picture Show



Indicator



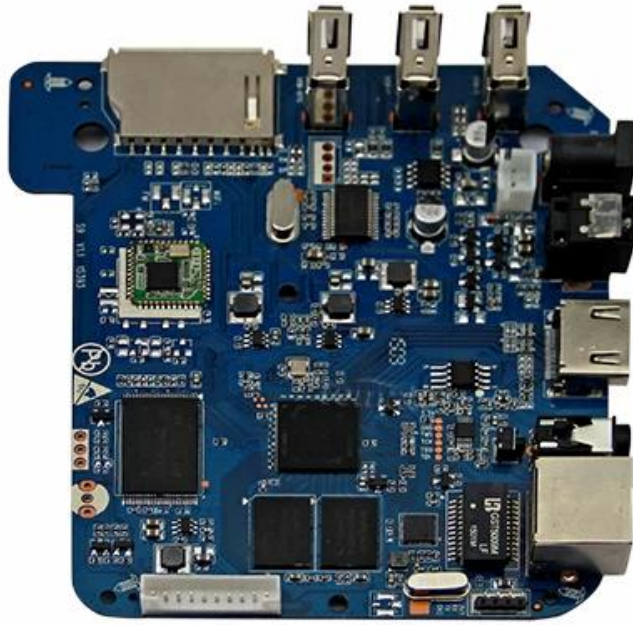
USB\*3

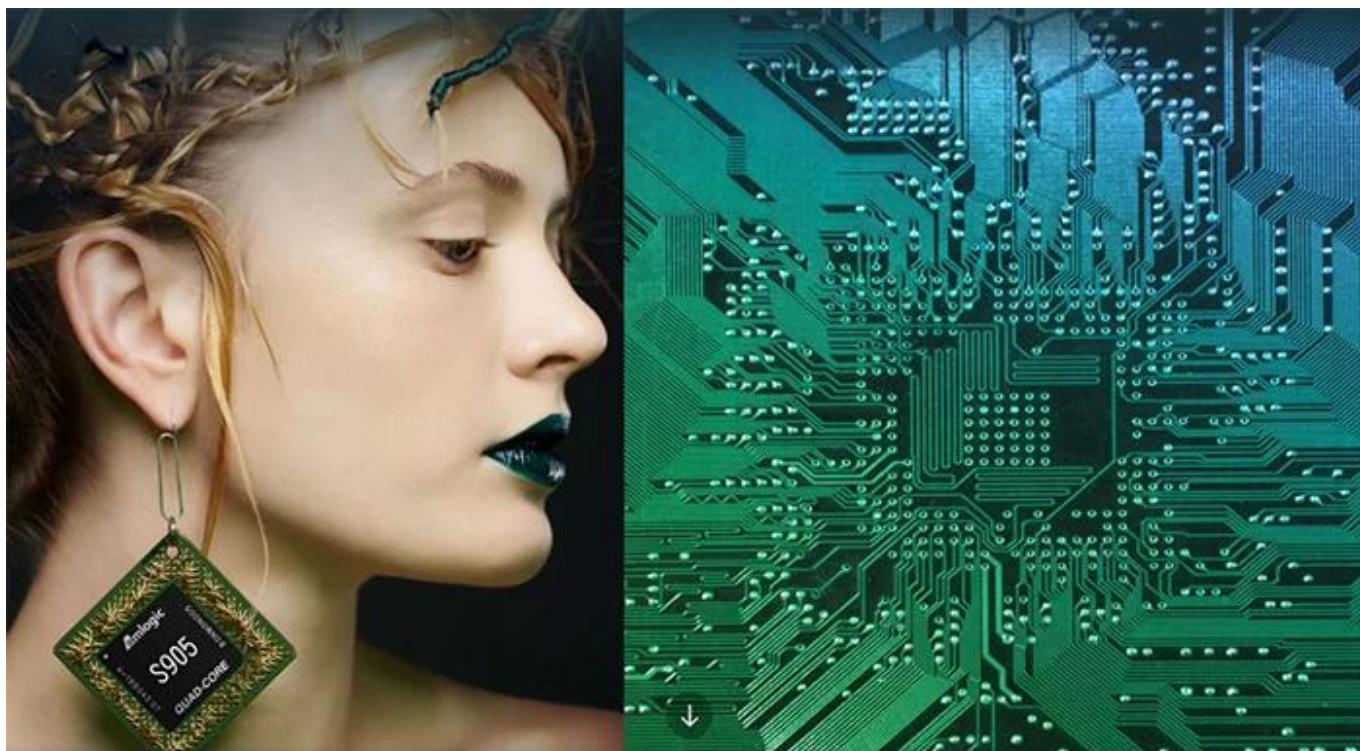
SD/MMC Card



ON/OFF Button      DC Port      RJ45 ETHERENT      AV Port      HDMI™      OPTICAL Port







# S905

64-Bit  
Quad Core  
Cortex A53

4K

H.265  
@60fps

HDMI 2.0  
HDCP 2.2

TSMC  
28NM

DRM



**64 bit CPU,**

While maintaining the same power consumption, the computing power of CPU has also been greatly improved.

With 4K2K decoding capabilities,  
it make 4K become the standard.



---

The color quantity is increase by 60 times more than the previous generation.



10 bit decoding, it could highest support 1.07 billion color, Compared to the previous generation of 16.7 million colors, it increase by 60 times.

---

The sound upgrade,  
while supporting Dolby Digital Plus and DTS.





3 + 2 core high-frequency GPU,  
it make the TV turn into the PlayStation.



The single core CPU frequency increase of 25%, 5-core computing speed can be achieved by the previous generation 8-core, it allowing you to experience smooth gaming.

Support 802.11ac WiFi protocol.

200 Mbps  
实际速率

120 Mbps  
上一代实际速率



Wireless projection the image&video  
of the phone/computer onto the TV.



Miracast



Airplay



DLNA



SMB  
共享协议



Intel@WIDI

Equipped with smart contiguous  
memory allocation technology,  
make the system running more smoothly.



---

# 4.1



# Bluetooth<sup>®</sup>

---



HD2.0  
Image output



HD1.0  
Image output

Home entertainment, perfect enjoyment

- Extreme graphics, HD2.0 Image output
  - 1000M Ethernet LAN
-



Unforgettable visual  
experience.

1920 \* 1080 HD



Support 3D



1080P



Ultra Wide Vision

It's all about speeding up.



1G DDR3 dual channel memory and 8GB eMMC high speed flash memory.

The dual channel memory runs 1080p HD videos and large games flawlessly,  
while the eMMC high speed flash memory controls apps, games, and multi-media storage with ease.

Everything comes alive with 3D.



Experience home entertainment in 3D!



## S905

One of industry's first multimedia SoCs with 64-bit architecture, S905 is designed to deliver immersive theatre-level home entertainment to the users with excellent audio and video processing capabilities. It also supports operator-level security and is a perfect choice for OTT/IPTV/DVB STB, TV dongle and smart home applications.