

# Amlogic S928X Google TV

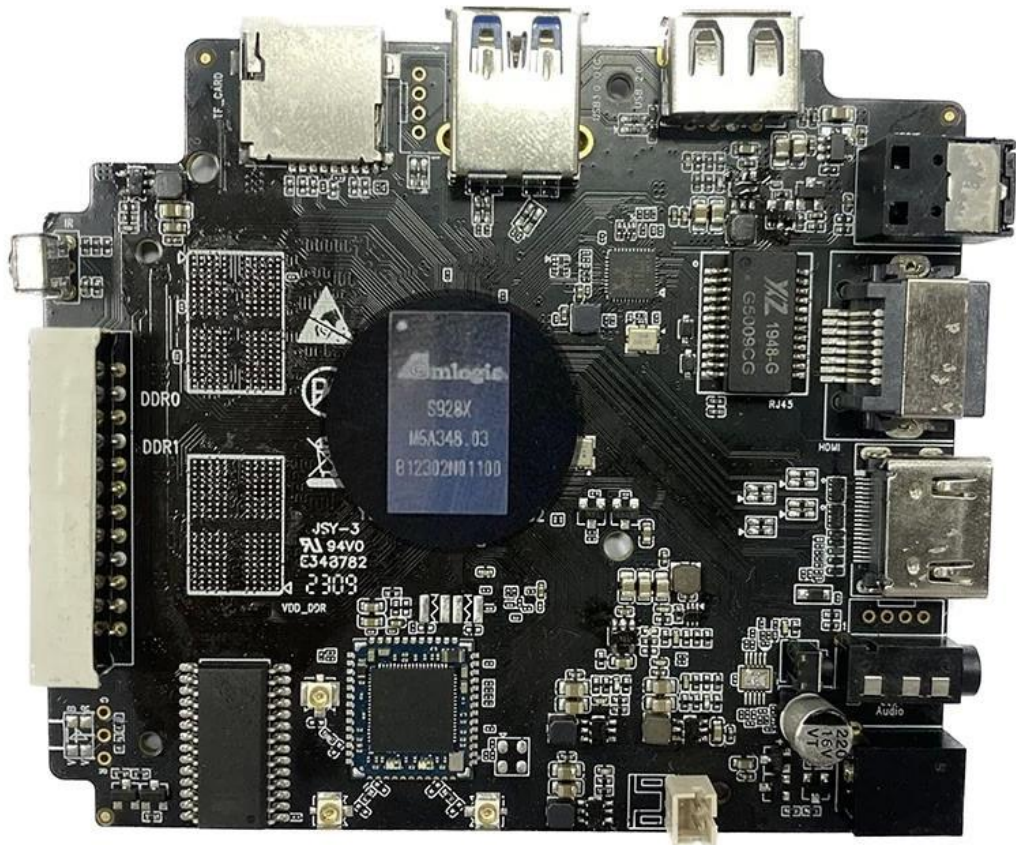
□□

□□ □□	Amlogic S928X Google TV □□
CPU	Amlogic S928X ARM Cortex-A76□□ □□ ARM Cortex-A55
GPU	ARM Mali-G57 MC2, 4K GUI OpenGL ES 3.2, Vulkan 1.2 □ OpenCL 2.0
NPU	3.2 TOPS
RAM	64□□ DDR4, LPDDR4/4X □□ 8GB DDR4266
eMMC	eMMC 5.1, SLC NAND □□□ □□ □□□□ □□□ □ □□□□ □□□ Amlogic Video Engine(AVE) □□□ AV1 MP-10 @ L6.1 □□ 8Kp60 VP9 □□□-2 @ 6.1 □□ 8Kp60 H.265 HEVC MP-10 @ L6.1 □□ 8Kp60 AVS3 Phase 1 □□ 8Kp60 AVS2-P2 □□□ □□ 8Kp60 H.264 AVC HP @ L5.2 □□ 4Kp60
□□□ □□□	MPEG-4, WMV/VC-1, AVS, MPEG-2, MPEG-1 □□ 1080p60 MJPEG □ JPEG □□□ □□ □□□ □□□(ISO/IEC-10918) □□ 4x 4Kp60 □ □□ □□□ □□□ □□ □□□ □□ 4Kp60□ JPEG □□□ □□□ □□ □□ □□□□ □□ 4Kp60□□ H.265 □□□ □□□ □□ □□ □□□□ □□ 4Kp60□□ H.264 □□□ □□□ Dolby Vision(□□), HDR10, HDR10, HLG □ HDR Vivid □□□ □□□□ 8□□ □□ Amlogic TruLife □□□ □□
AI □□□	TPU(□□ □□ □□) □□□□□ □□ □□ 3.2 TOPS □□□ □□□(NNA), TensorFlow □ Caffe □□
□□□ □□	CEC, Dynamic HDR □ HDCP 2.2/2.3□ □□□□ □□□□□ PHY□ □□ □□□□ HDMI 2.1a □□□, eARC, VRR, QMS, QFT, ALLM, DSC □ SBTM□ □□□□ □□ 8Kp60 □□□ □□ MP3, AAC, WMA, RM, FLAC, Ogg Vorbis, Opus, SRS Truvolume, Dolby Audio(□□), DTS(□□) □□ □ 7.1/5.1 □□□□ □□□ VAD
□□□ □□	□□ SPDIF □□/□□ □□ 192KHz 16/24/32□□ □□□□ □□ 48kHz x 32□□ x 32ch □□ 192kHz x 16□□ x 16ch□ TDM/PCM □□ □ □□ 384kHz x 32□□ x 16ch□ I2S □□□ □□ □□ TDM/PCM/I2S □□ 3□ □□□□□ □□□ CIC, LPF, HPF□ □□□ □□□ □□□ PDM □□, □□ 8□□ DMIC □□ □□□ □□□□ □□□ DAC
□□□□ □□□□□	10/100/1000 MAC
USB2.0 □□□□□	USB XHCI OTG 2.0 1□, USB 2.0 □□□ 2□, PCIe 2.0□ □□□□□□□ USB 3.0(5Gbps) 1□

# S928X

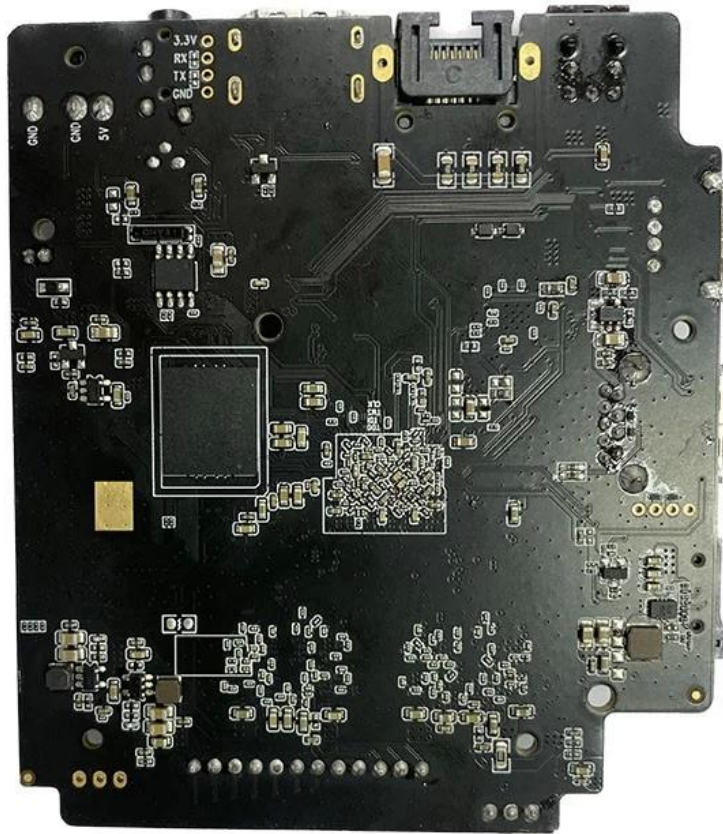


\* Supported configuration: PCIe 2.0 port + USB 2.0 Host, or USB3.0 port without PCIe.









Amlogic S928X ARM Cortex-A76, ARM Cortex-A55 SoC. AV1, H.265, VP9, AVS3, AVS2 8Kp60 4K GUI, SR

Amlogic S928X ARM Cortex-A76, ARM Cortex-A55 SoC. AV1, H.265, VP9, AVS3, AVS2 8Kp60 4K GUI, SR

S928X ARM Cortex-A76, ARM Cortex-A55 SoC. AV1, H.265, VP9, AVS3, AVS2 8Kp60 4K GUI, SR

S928X ARM Cortex-A76, ARM Cortex-A55 SoC. AV1, H.265, VP9, AVS3, AVS2 8Kp60 4K GUI, SR

S928X ARM Cortex-A76, ARM Cortex-A55 SoC. AV1, H.265, VP9, AVS3, AVS2 8Kp60 4K GUI, SR

