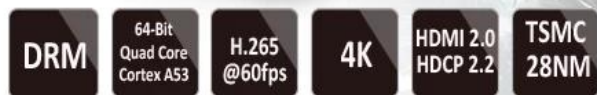


Android 5.1 4K*2K HDMI 2.0 TV Box XBMC

Amlogic S905 Quad Core WiFi Device Smart Box
Watch TV Channels Through Wifi or Internet



G9C

Model	G9C Android TV XBMC
CPU	Amlogic S905 Quad Core ARM Cortex™ -A53 CPU @ 2.0GHz(DVFS)
GPU	Mali-450 @ 750Mhz
Storage	8GB EMMC
SDRAM	1GB DDR3
Power	DC 5V/2A
LED	Red, Green, Blue
OS	Android™ 5.1
3D	3D-HD 1080Px2
Video	HD MPEG1/2/4, H.264 /H.265, HD AVC/VC-1, RM/RMVB, Xvid/DivX3/4/5/6, RealVideo8/9/10, HEVC MP-10
Audio	Avi/Rm/Rmvb/Ts/Vob/Mkv/Mov/ISO/Wmv/Asf/Flv/Dat/Mpg/Mpeg/ MP4
Audio	MP3/WMA/AAC/WAV/OGG/AC3/DDP/TrueHD/DTS/DTS/HD/FLAC/APE
Image	HD JPEG/BMP/GIF/PNG/TIFF
USB	2 x USB 2.0, U Disk, USB HDD
Storage	SD™ /SDHC/MMC
HDD	FAT16/FAT32/NTFS
Subtitles	SRT/SMI/SUB/SSA/IDX/USB
OSD	OSD SD/HD/4K2K Ultra HD
Network	100Mbps RJ-45 (IEEE 802.3 10/100/1000)
Bluetooth	IEEE802.11 b/g/n Bluetooth™ 4.1EDR
Wireless	USB Wireless LAN, 2.4GHz USB Wireless LAN
HDMI	HDMI™ 2.0 (CEC, HDCP 2.2), 4K X 2K @60fps
AV	AV
Power	PoE
SPDIF	SPDIF/IEC958
IPTV	IPTV, OTT
Apps	Miracast, Kodi, Airplay, Skype, Picasa, Youtube, Flickr, Facebook, etc.

□□ □□

□□ □□□ □□, □□ □□ Android □□□□□□, □□□ □□□ □□ □

□□□ □□ □□ □□□?

1 * □□□□□ TV □□ XBMC

1 * HDMI □□□

1 * □□ □□

1 * □□ □□□

1 * □□□ □□□



Picture Show



Indicator Light Port





Micro SD Card

USB

USB



AV Port

RJ 45 ETHERNET

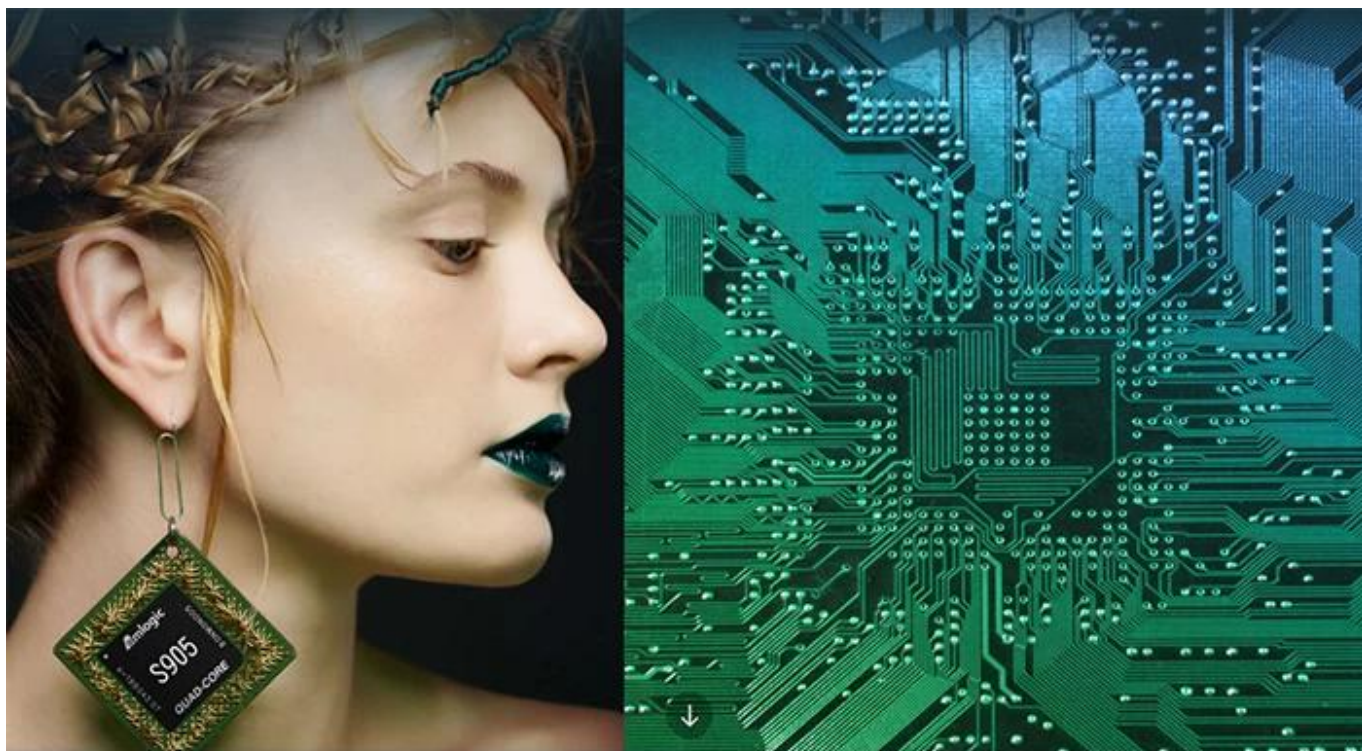
HDMI™

Optical Port

Power Port







S905

64-Bit
Quad Core
Cortex A53

4K

H.265
@60fps

HDMI 2.0
HDCP 2.2

TSMC
28NM

DRM



64 bit CPU,

While maintaining the same power consumption, the computing power of CPU has also been greatly improved.

With 4K2K decoding capabilities,
it make 4K become the standard.



The color quantity is increase by 60 times more than the previous generation.



10 bit decoding, it could highest support 1.07 billion color,
Compared to the previous generation of 16.7 million colors, it increase by 60 times.

The sound upgrade,
while supporting Dolby Digital Plus and DTS.



3 + 2 core high-frequency GPU,
it make the TV turn into the PlayStation.



The single core CPU frequency increase of 25%, 5-core computing speed can be achieved by the previous generation 8-core, it allowing you to experience smooth gaming.

Support 802.11ac WiFi protocol.

200 Mbps
实际速率

120 Mbps
上一代实际速率



Wireless projection the image&video
of the phone/computer onto the TV.



Miracast



Airplay



DLNA



SMB
共享协议



Intel@WIDI

Equipped with smart contiguous
memory allocation technology,
make the system running more smoothly.





Unforgettable visual
experience.

1920 * 1080 HD



Support 3D



1080P



Ultra Wide Vision

It's all about speeding up.



1GB
DDR3
dual channel memory



8GB
eMMC
flash memory

1G DDR3 dual channel memory and 8GB eMMC high speed flash memory.

The dual channel memory runs 1080p HD videos and large games flawlessly,
while the eMMC high speed flash memory controls apps, games, and multi-media storage with ease.

Everything comes alive with 3D.



Experience home entertainment in 3D!



S905

One of industry's first multimedia SoCs with 64-bit architecture, S905 is designed to deliver immersive theatre-level home entertainment to the users with excellent audio and video processing capabilities. It also supports operator-level security and is a perfect choice for OTT/IPTV/DVB STB, TV dongle and smart home applications.