

Android 5.1 Quad Core Cortex A53 Amlogic S905 Lollipop TV Box S9 Android TV Box

S9

Amlogic S905 Quad Core S9

New! Amlogic S905 Quad Core ARM Cortex™-A53 CPU
up to 2.0 GHz, 1GB/8GB H.265 4K2K Android 5.1 TV Box!



S905

1GB
8GB



DLNA

H.265
HEVC





4k2k



Android 5.1

FULL HD
1080P

Android TV	
Model	S9 Android TV
CPU	Amlogic S905 Quad Core ARM Cortex™ -A53 CPU up to 2.0GHz(DVFS)
GPU	Quad Core Mali-450 up to 750Mhz
RAM	8GB
DDR3	1GB DDR3
OS	Android 5.1
www.sztomato.com	
Power	DC 5V/2A
LED (LED)	LED indicator, IR: IR, RF: IR, Power: <0.5W
Features	
OS	Android™ 5.1
Video	H.265 HEVC MP-10@L5.1 up to 4Kx2K@60fps H.264 AVC HP™@L5.1 up to 4Kx2K@30fps H.264 MVC up to 1080P@60fps MPEG-4 ASP@L5 up to 1080P@60fps(ISO-14496) WMV/VC-1 SP/MP/AP up to 1080P@60fps AVS-P16(AVS) /AVS-P2 up to 1080P@60fps MPEG-2 MP/HL up to 1080P@60fps(ISO-13818) MPEG-1 MP/HL up to 1080P@60fps(ISO-11172) RealVideo 8/9/10 up to 1080P WebM(800 VGA) H.264/AVC, H.264/AVC, H.264/AVC MJPEG, JPEG, H.264, H.264, H.264(ISO/IEC-10918) JPEG, H.264, H.264, H.264, H.264 *.mkv, *.wmv, *.mpg, *.mpeg, *.dat, *.avi, *.mov, *.iso, *.mp4, *.rm, *.jpg, *.png, *.gif
Audio	DSP, MediaCPU MP3, AAC, WMA, RM, FLAC, Ogg up to 5.1, SPDIF, IEC958, PCM, H.264, H.264, H.264
Image	HD JPEG, BMP, GIF, PNG, TIF
Ports	USB, HDMI, SPDIF, IEC958, PCM, H.264, H.264, H.264
www.sztomato.com	
1*HDMI™	4K*2K UHD up to, HDMI™ 2.0
1*AV	480i/576i up to
3*USB	2*USB up to, 1*USB up to
1*LAN	1000M LAN
1*RJ45	1000M LAN
1*SD™/MMC	4GB/8GB/16GB/32GB/64GB up to
Android TV	

□□□	□□ □□□ □□□□□ □□□□ Netflix, Hulu, Flixster, Youtube □□ □□□□□.
□	□□ □□□□□ □□, Amazon™ □ □□□ □□□ □□□□□ □ □□□□.
□□	□□ □□□ □□, HDD, U □□□, SD™/MMC □□ □□.
□□□□□ □□□□□	SKYPE □□ □□, MSN, □□□□, □□□, QQ □□ □□□□□.
□□	□□ □□□, □□□ □ DLNA □□ □□ 2.4G □□ □□□/□□□ □□

 Picture Show

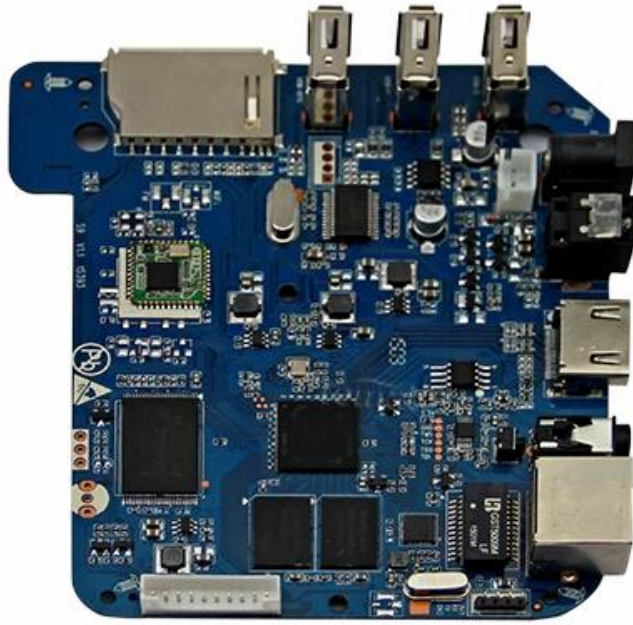


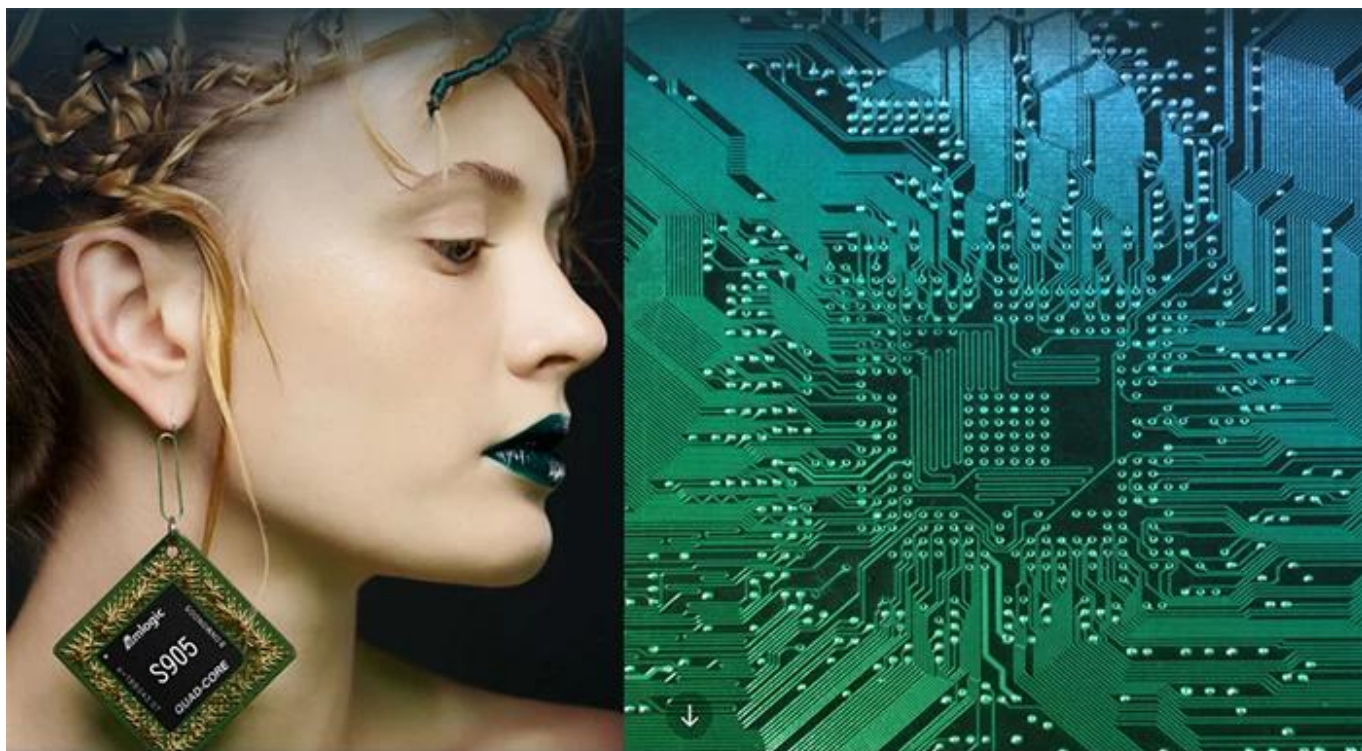
Indicator



USB*3

SD/MMC Card





S905

64-Bit
Quad Core
Cortex A53

4K

H.265
@60fps

HDMI 2.0
HDCP 2.2

TSMC
28NM

DRM



64 bit CPU,

While maintaining the same power consumption, the computing power of CPU has also been greatly improved.

With 4K2K decoding capabilities,
it make 4K become the standard.



The color quantity is increase by 60 times more than the previous generation.



10 bit decoding, it could highest support 1.07 billion color,
Compared to the previous generation of 16.7 million colors, it increase by 60 times.

The sound upgrade,
while supporting Dolby Digital Plus and DTS.



3 + 2 core high-frequency GPU,
it make the TV turn into the PlayStation.



The single core CPU frequency increase of 25%, 5-core computing speed can be achieved by the previous generation 8-core, it allowing you to experience smooth gaming.

Support 802.11ac WiFi protocol.

200 Mbps
实际速率

120 Mbps
上一代实际速率



Wireless projection the image&video
of the phone/computer onto the TV.



Miracast



Airplay



DLNA



SMB
共享协议



Intel@WIDI

Equipped with smart contiguous
memory allocation technology,
make the system running more smoothly.



4.1



Bluetooth[®]



HD2.0
Image output



HD1.0
Image output

Home entertainment, perfect enjoyment

- Extreme graphics, HD2.0 Image output
 - 1000M Ethernet LAN
-



Unforgettable visual
experience.

1920 * 1080 HD



Support 3D



1080P



Ultra Wide Vision

It's all about speeding up.



1G DDR3 dual channel memory and 8GB eMMC high speed flash memory.

The dual channel memory runs 1080p HD videos and large games flawlessly,
while the eMMC high speed flash memory controls apps, games, and multi-media storage with ease.

Everything comes alive with 3D.



Experience home entertainment in 3D!



S905

One of industry's first multimedia SoCs with 64-bit architecture, S905 is designed to deliver immersive theatre-level home entertainment to the users with excellent audio and video processing capabilities. It also supports operator-level security and is a perfect choice for OTT/IPTV/DVB STB, TV dongle and smart home applications.