

# Android TV 10, Android TV 10 10000

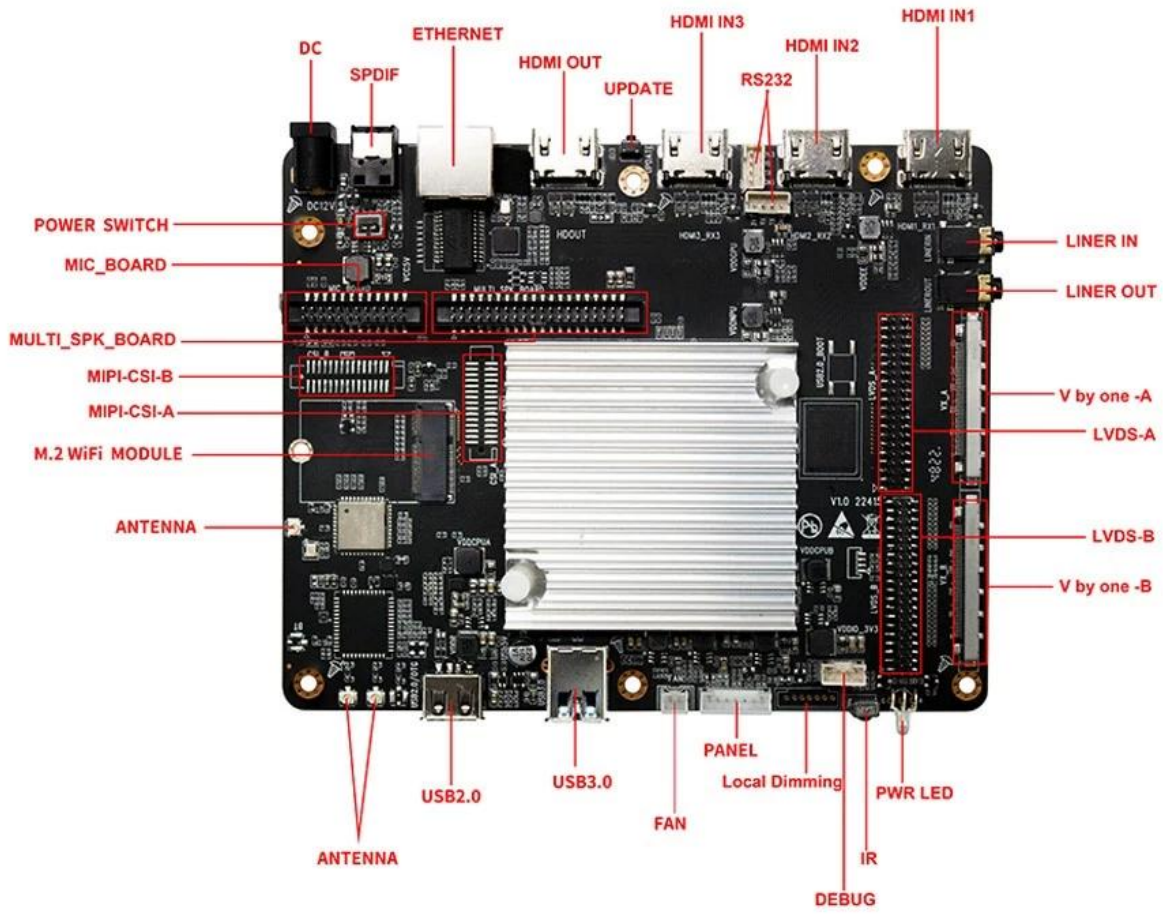
## Android

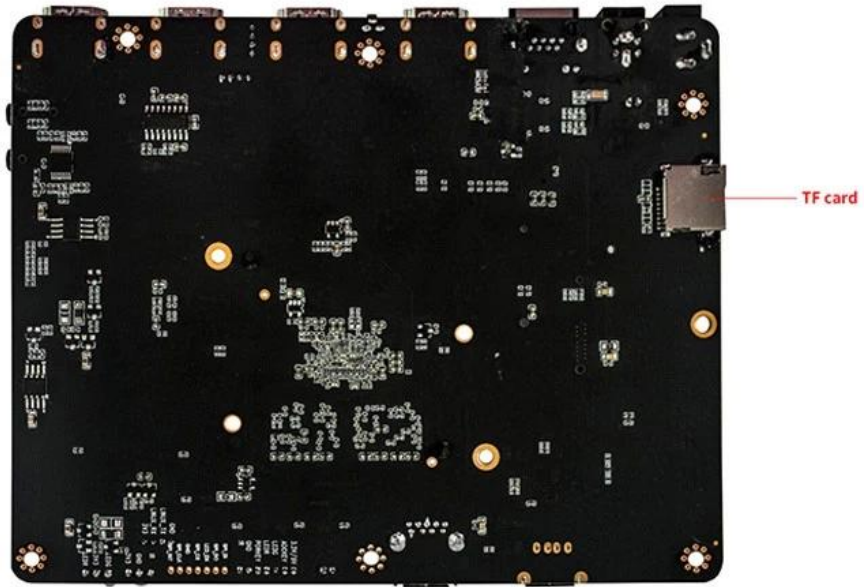
Android	Android 10
CPU	Amlogic A311D2 Cortex-A73 Cortex-A53
GPU	ARM Mali-G52 MP8
RAM	4GB(8GB/32GB)
ROM	32GB(64GB/128GB/256GB)
OS	Android 11.0
Wi-Fi / Bluetooth	Wi-Fi(2.4G, 5G), BT4.2 BT5.0(M.2)

## I/O

HDMI	3*HDMI
HDMI	1*HDMI
LVDS	1, 50/60Hz LCD
V-By-One	2*8 V-by-One, 4Kp60; 4K*2K@60Hz
Power	5V/12V, PWM
USB	1*USB 3.0 A USB 2.0 A (USB OTG)
UART	2*UART(2*RS232 2*TTL; TF 1*UART)
CSI	2*CSI
PDM	CSI, PDM
Spk	I2S
Network	1*RJ45, 100M/1000M
SPDIF	SPDIF COAX
Audio	AUDIO
Audio	AUDIO
RTC	RTC
IR	IR (IR)
LED	LED
OTA	TF USB OTA

Power 5V/12V









**10. 𐄀𐄀 𐄀𐄀 𐄀 𐄀𐄀𐄀:**

𐄀𐄀𐄀 𐄀𐄀 𐄀𐄀𐄀 𐄀𐄀𐄀𐄀 𐄀𐄀𐄀 𐄀𐄀𐄀 𐄀𐄀 𐄀𐄀𐄀𐄀 𐄀𐄀𐄀𐄀 𐄀𐄀𐄀𐄀 𐄀𐄀𐄀𐄀 𐄀𐄀 𐄀𐄀𐄀𐄀 𐄀𐄀𐄀𐄀. 𐄀𐄀𐄀 𐄀𐄀𐄀 𐄀𐄀, 𐄀𐄀𐄀 𐄀𐄀𐄀, 𐄀𐄀𐄀𐄀 𐄀𐄀 𐄀𐄀𐄀 𐄀𐄀𐄀𐄀 𐄀𐄀𐄀 𐄀𐄀 𐄀𐄀 𐄀𐄀𐄀𐄀 𐄀𐄀𐄀𐄀𐄀.

𐄀𐄀𐄀𐄀𐄀 𐄀𐄀𐄀 [𐄀𐄀𐄀𐄀𐄀 TV 𐄀𐄀 𐄀𐄀](#) 𐄀𐄀𐄀𐄀𐄀 𐄀𐄀 𐄀𐄀𐄀 𐄀𐄀, 𐄀𐄀𐄀 𐄀𐄀 𐄀𐄀, 𐄀𐄀𐄀 𐄀𐄀 𐄀𐄀 𐄀𐄀𐄀𐄀 𐄀𐄀𐄀𐄀 𐄀𐄀𐄀𐄀 𐄀𐄀𐄀 𐄀𐄀𐄀 𐄀 𐄀𐄀𐄀 𐄀𐄀𐄀𐄀. [𐄀𐄀𐄀𐄀 TV 𐄀𐄀 𐄀𐄀𐄀𐄀](#). 𐄀𐄀𐄀𐄀 𐄀𐄀𐄀𐄀𐄀𐄀 𐄀𐄀 𐄀𐄀𐄀 𐄀𐄀 𐄀𐄀𐄀 𐄀𐄀 TV 𐄀𐄀 𐄀𐄀𐄀𐄀𐄀 𐄀𐄀𐄀𐄀𐄀 𐄀𐄀𐄀𐄀𐄀𐄀.