

□□□□ **TV** □□ □□□□, □□□□□ □□□ **TV** □□

## Multifunctional intelligent industrial control board

Amlogic S922X / S905D3 / T972



V-By-One; Direct 4K Dot Screen; Android 9.0 Or Above  
[www.sztomato.com](http://www.sztomato.com)

規格	
チップセット	Amlogic S922X Android TV チップセット
CPU	Amlogic S922X 64 ビット Quad Core Arm® Cortex™ A73 CPU + Dual Core Arm® Cortex™ A53 CPU
GPU	ARM MALITM-G52 MP4 GPU
メモリ	2GB/4GB LPDDR4
ストレージ	16G B/ 64GB EMMC
OS	Android 9.0
主要な機能と仕様	
ディスプレイ / カメラ	AVC H.265 HEVC MP-10@I5.1 4Kx2k@60fps VP9 -2 4Kx2k@60fps H.265 HEVC MP-10@I5.1 4Kx2k@60fps AVS2-P2 4Kx2k@60fps H.264 AVC hp@I5.1 4Kx2k@30fps H.264 MVC 1080p@60fps MPEG-4 ASP@L5 1080p@60fps (ISO-14496) WMV/VC-1 SP/MP/AP 1080p@60fps AVS-P16 (AVS) /AVS-P2 Jizhun 1080p@60fps MPEG-2 MP/HL 1080p@60fps (ISO-13818) MPEG-1 MP/HL 1080p@60fps (ISO-11172) RealVideo 8/9/10 1080p@60fps H.265/H.264 1080p@60fps MJPEG JPEG ISO/IEC-10918 JPEG *.mkv, *.wmv, *.mpg, *.mpeg, *.dat, *.avi, *.mov, *.iso, *.mp4, *.rm *.jpg Dolby VisionOptional, HDR10, HDR10+, HLG Prime HDR
オーディオ / コネクタ	JPEG H.265/H.264 1080p@60fps JPG H.265/H.264 1080p@60fps CEC PHY HDMI 2.1 Dynamic HDR HDCP 2.2, 4KX2K@60 c VBS 480i/576i SD/HD/FHD 480i/P, 576i/P, 720P, 1080i/P 4KX2K MIPI DSI MP3, AAC, WMA, RM, FLAC, OGG 7.1/5.1 SPDIF/IEC958 PCM TDM/PCM/I2S 384kHz x 32bitsx8ch CIC, LFP HPF PDM 8 DMICS DAC I2SPCM
インターフェース	HD MPEG1/2/4, H.265/HEVC, HD AVC/VC-1, RM/RMVB, XVID/DIVX3/4/5/6, RealVideo8/9/10 AVI/RM/RMVB/TS/VOB/MKV/MOV/ISO/WMV/ASF/FLV/DAT/MPG/MPEG MP3/WMA/AAC/WAV/OGG/DDP/TRUEHD/HD/FLAC/APE HD JPEG/BMP/GIF/PNG/TIFF
周辺機器	
USB	USB2.0, 480Mbps/USB3.0, Max5.1Gbps
HDMI	HDMI 2.2/1CH LVDS/1CH EDP
その他	RJ45 100/1000m

Wi-Fi/ Bluetooth	AP6398S (Wi-FiBt) 2.4g5.8g
4G	PCIe
TF	microSD (max 128g)
HDD	SATA MAX2TB (optional)
Power	12V DC/3Aφ5.5*φ2.5mm

Intelligent Display, 3D, AI, Android, 12nm, S922X, Amlogic, CPU, GPU, 4K, HDR, Cortex-A73, Cortex-A53, Simd Coprocessor, AVE-10, 75, 4kx2k, MVC, MPEG-1/2/4, VC-1, H.264, H265-10, vp9, jpeg, JPEG, H.265/H.264, 1080p, 75, HDMI2.2, 4kx2k @ 60fp (3840 \* 2160), HDCP 2.2, DAC, CVBS, 4, MIPI DSI, TDM, PCM, I2S, SPDIF, I/O, 8, PDM, (DMIC), DVP, 2x2 Wi-Fi (2.4G ~ 5.8g), 4.1

12nm AI S922X Amlogic. CPU, GPU, 4K, HDR, Cortex-A73, Cortex-A53, Simd Coprocessor, AVE-10, 75, 4kx2k, MVC, MPEG-1/2/4, VC-1, H.264, H265-10, vp9, jpeg, JPEG, H.265/H.264, 1080p, 75, HDMI2.2, 4kx2k @ 60fp (3840 \* 2160), HDCP 2.2, DAC, CVBS, 4, MIPI DSI, TDM, PCM, I2S, SPDIF, I/O, 8, PDM, (DMIC), DVP, 2x2 Wi-Fi (2.4G ~ 5.8g), 4.1

- o Amlogic 64-bit Arm® Cortex™ A73 CPU & Dual Core Arm® Cortex™ A53 CPU
- o ARM Mali-G52 MP4 GPU
- o HW UHD 4K.265 75FPS 10-bit 1080p H.265/H.264 60FP Sencoder
- o Dolby Vision, HDR10, HDR10, HLG, Prime HDR
- o Cortex-M4
- o DRM ORSTZONE
- o Wi-Fi, BT, USB, SD, ,

O

Amlogic S922X Android OTT/IPTV Set Top Box (STB) CPU, GPU, 4K, HDR, Cortex-A73, Cortex-A53, Simd Coprocessor, AVE-10, 75, 4kx2k, MVC, MPEG-1/2/4, VC-1, H.264, H265-10, vp9, jpeg, JPEG, H.265/H.264, 1080p, 75, HDMI2.2, 4kx2k @ 60fp (3840 \* 2160), HDCP 2.2, DAC, CVBS, 4, MIPI DSI, TDM, PCM, I2S, SPDIF, I/O, 8, PDM, (DMIC), DVP, 2x2 Wi-Fi (2.4G ~ 5.8g), 4.1

CPU, Cortex-A73, Cortex-A53, Simd Coprocessor, AVE-10, 75, 4kx2k, MVC, MPEG-1/2/4, VC-1, H.264, H265-10, vp9, jpeg, JPEG, H.265/H.264, 1080p, 75, HDMI2.2, 4kx2k @ 60fp (3840 \* 2160), HDCP 2.2, DAC, CVBS, 4, MIPI DSI, TDM, PCM, I2S, SPDIF, I/O, 8, PDM, (DMIC), DVP, 2x2 Wi-Fi (2.4G ~ 5.8g), 4.1

ARM Mali-G52 MP4 GPU, OpenGL ES 3.2, Vulkan 1.0, OpenCL 2.0, 2.5D, CPU, GPU, 4K, HDR, Cortex-A73, Cortex-A53, Simd Coprocessor, AVE-10, 75, 4kx2k, MVC, MPEG-1/2/4, VC-1, H.264, H265-10, vp9, jpeg, JPEG, H.265/H.264, 1080p, 75, HDMI2.2, 4kx2k @ 60fp (3840 \* 2160), HDCP 2.2, DAC, CVBS, 4, MIPI DSI, TDM, PCM, I2S, SPDIF, I/O, 8, PDM, (DMIC), DVP, 2x2 Wi-Fi (2.4G ~ 5.8g), 4.1

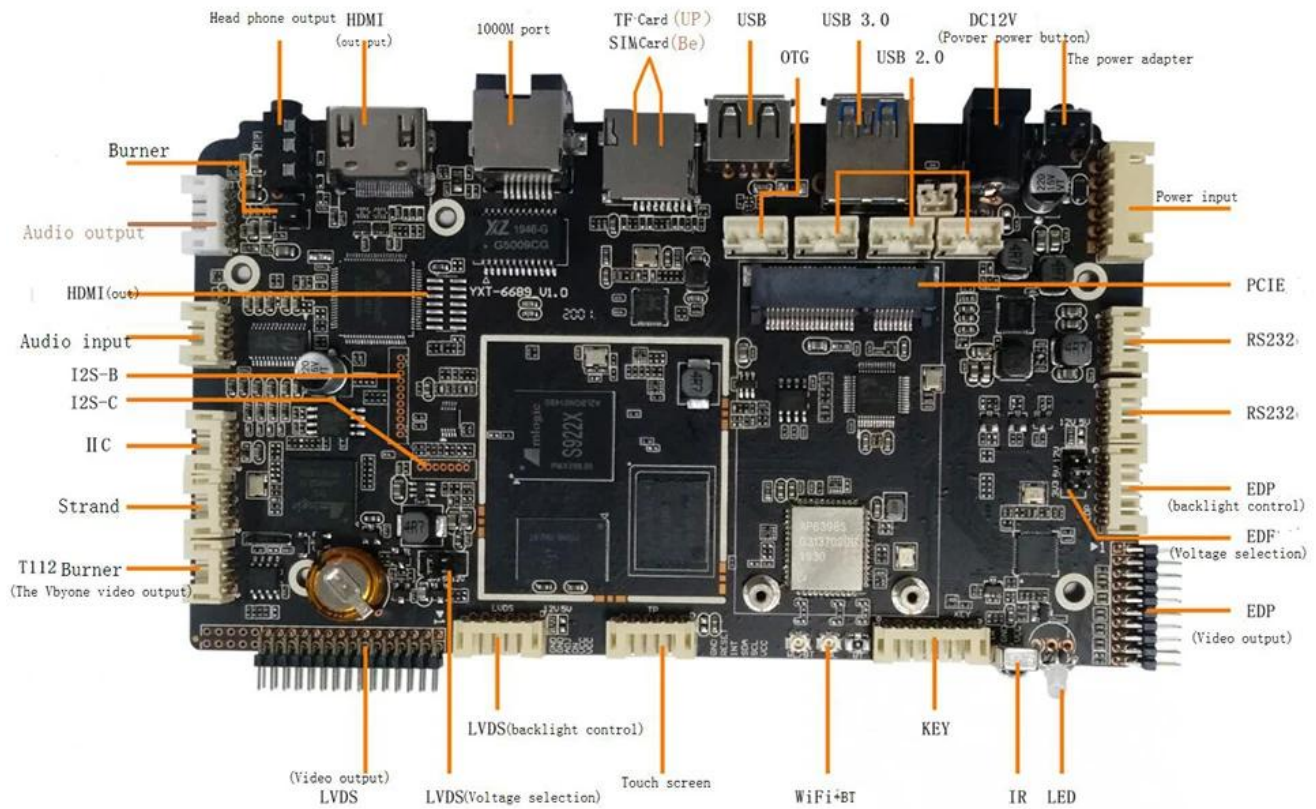
Amlogic Video Engine (AVE-10) Cortex-A53 CPU, Video

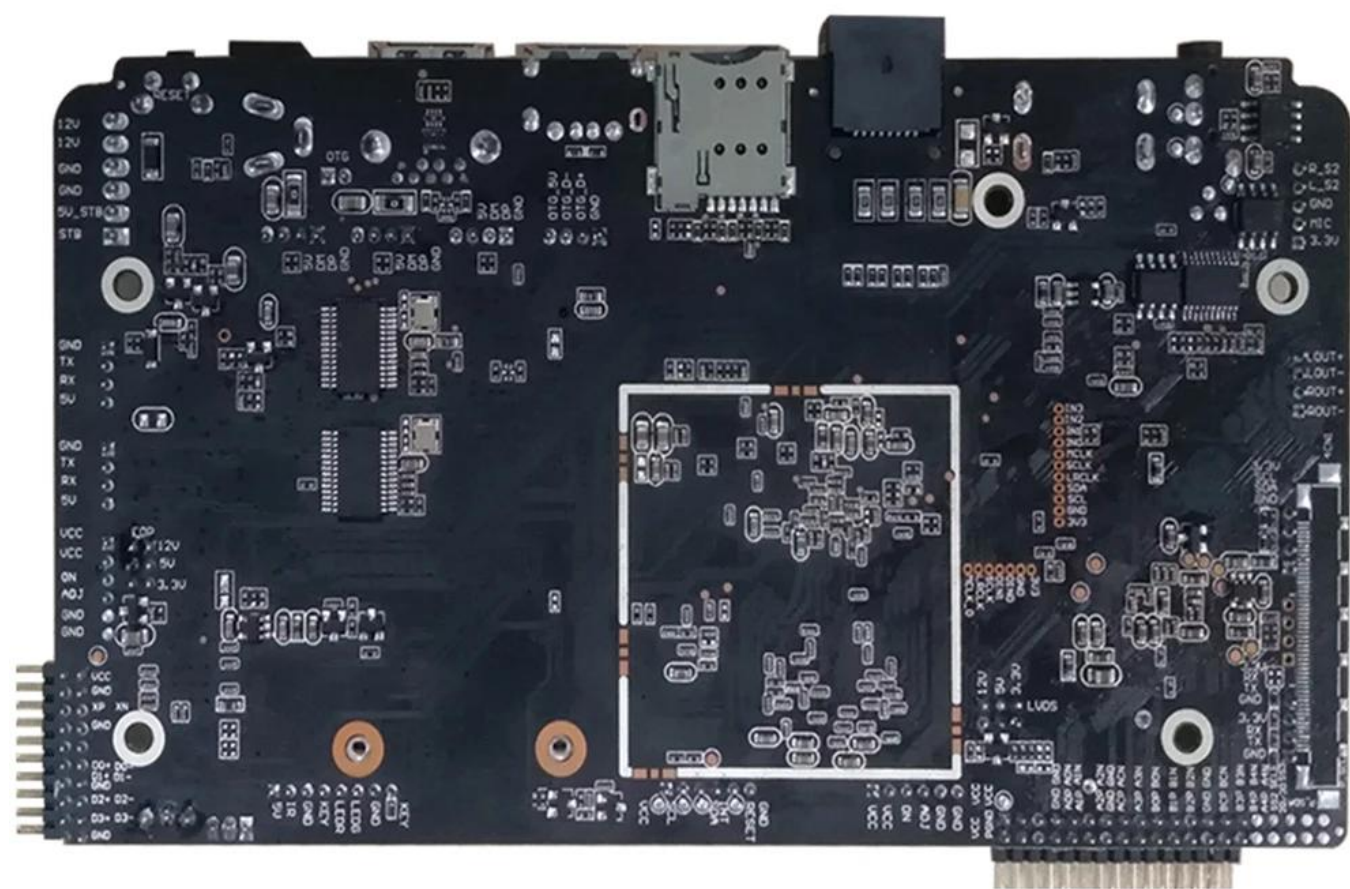
□ □□□ □□□□. AVE-10□ □□□ □□ □□□□□□ □□□ □□□ □□□ □□ (TVP) □ MVC, MPEG-1/2/4, VC-1/WMV, AVS, AVS, AVS2 RealVIDEO, MJPEG□ □□□ □□ □□ □□ 4KX2K □□□ □□□ AT 75FPS□ □□□ □ □ □□□□. □□□, H.264, H265-10, vp9 □ NoSize □□□□□ JPEG □□. □□ □□□□ 60fps□□ JPEG ORH.265/H.264□□ □□ 1080p□ □ □□ □ □ □□□□.

Amlogic S922X 3D, Dynamic HDR, CEC HDCCP 2.2 , , DAC, CVBS , 4 MIPI DSI , , TDM, PCM / / . I2S SPDIF Digital Audio Input/Output interfaces, 8 PDM (DMIC) DVPCAMERA .

Amlogic S922X 芯片支持 TV 芯片输出 1080P 60FPS 视频。该芯片 DemuxCan 芯片支持/输出 1080P 60FPS 视频。该芯片 Inputinterface 芯片支持 TV 芯片输出。

支援 RGMII 10/100/1000m Mac, 10/100m Phy, USB XHCI OTG 2.0, 1 USB3.0, PCIe, 雙通道 DDR3, 雙通道 SATA.









በጣም ጣም TV ስለሆነ ስለሆነ, ስለሆነ ስለሆነ ስለሆነ ስለሆነ. ስለሆነ ስለሆነ ስለሆነ.