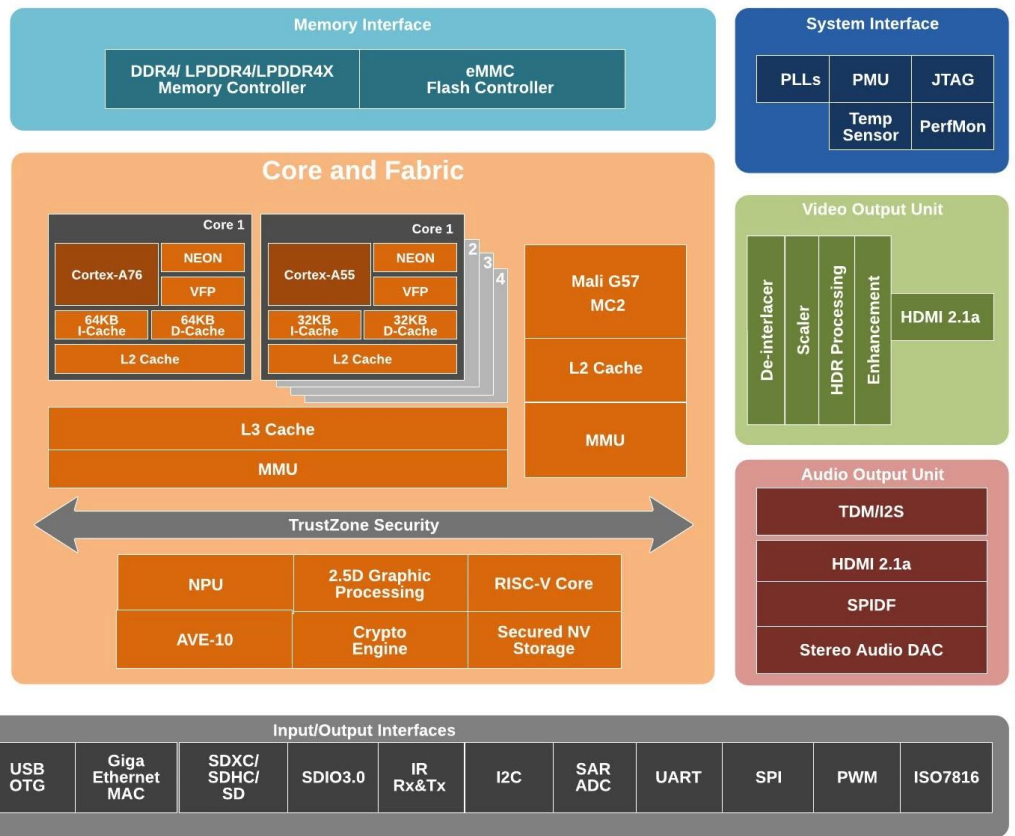


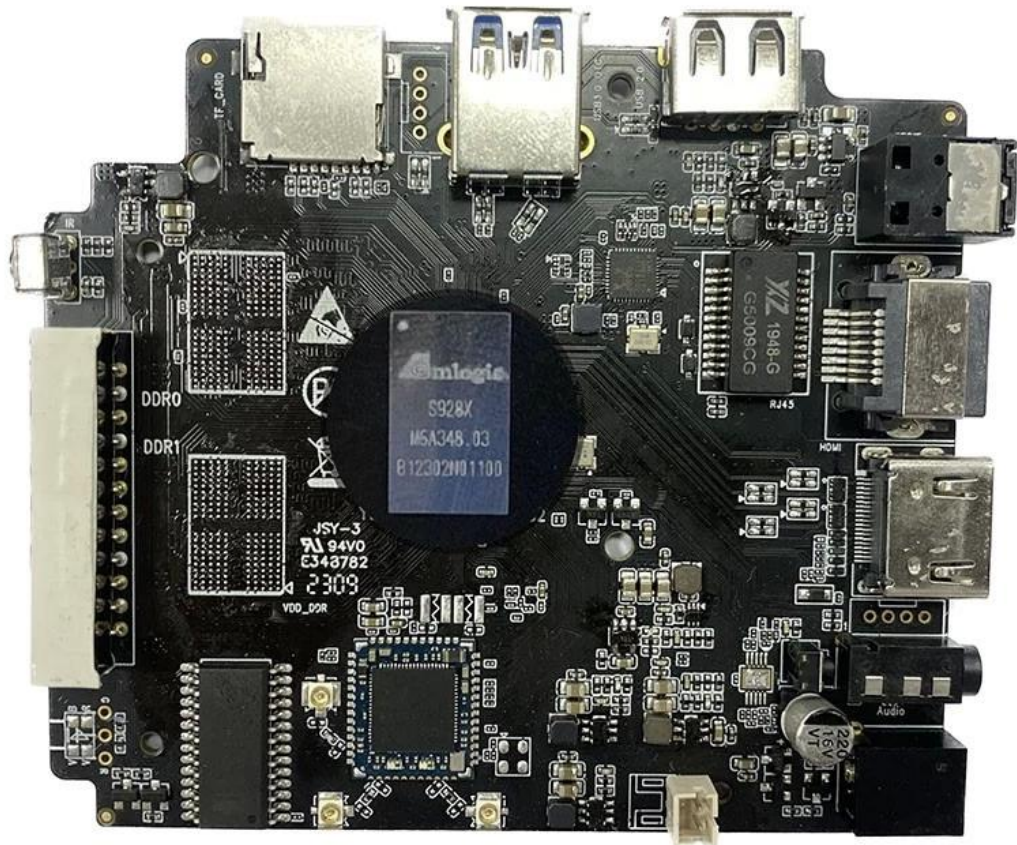
# Android TV 規格仕様書: Android 規格仕様 -

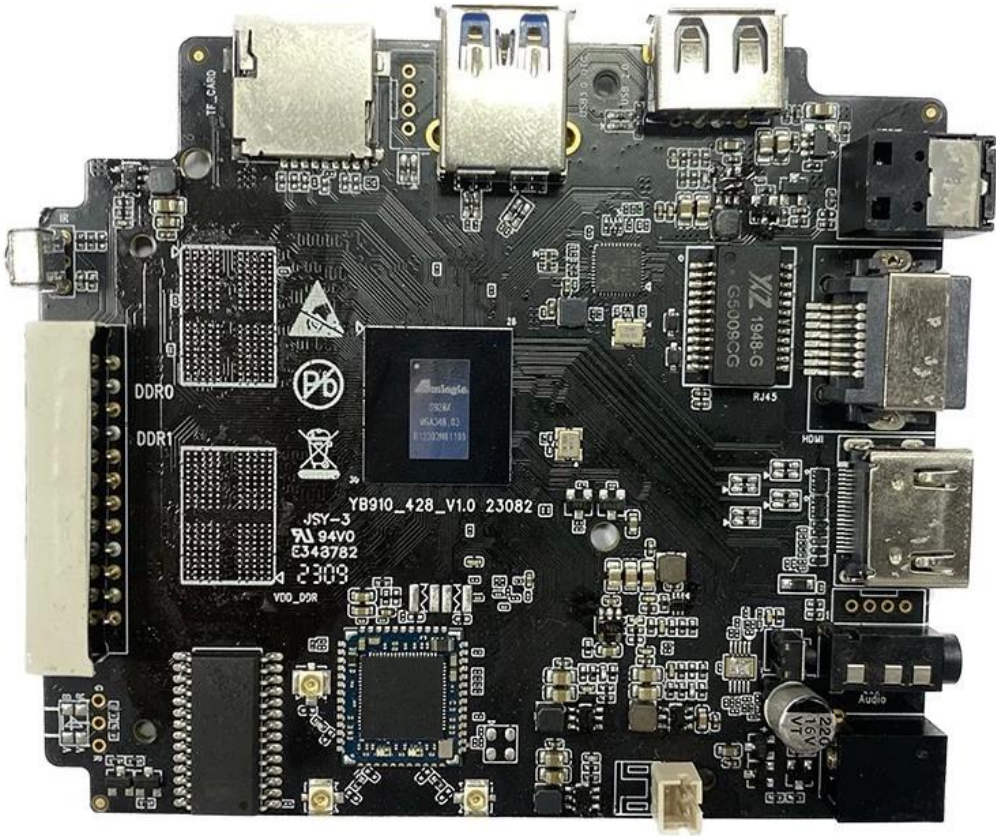
OS	Android TV
SoC	Amlogic S928X-J Google TV
CPU	Amlogic S928X-J ARM Cortex-A76 ARM Cortex-A55
GPU	ARM Mali-G57 MC2, 4K GUI OpenGL ES 3.2, Vulkan 1.2 OpenCL 2.0
NPU	3.2 TOPS
RAM	64bit DDR4, LPDDR4/4X 8GB DDR4266
eMMC	eMMC 5.1, SLC NAND
Video	Amlogic Video Engine(AVE) AV1 MP-10 @ L6.1 8Kp60 VP9 VP9-2 @ 6.1 8Kp60 H.265 HEVC MP-10 @ L6.1 8Kp60 AVS3 Phase 1 8Kp60 AVS2-P2 8Kp60 H.264 AVC HP @ L5.2 4Kp60 MPEG-4, WMV/VC-1, AVS, MPEG-2, MPEG-1 1080p60 MJPEG JPEG ISO/IEC-10918 4x 4Kp60 8Kp60 4Kp60 JPEG 4Kp60 H.265 4Kp60 H.264 Dolby Vision, HDR10, HDR10+, HLG HDR Vivid 8K Amlogic TruLife
AI	TPU 3.2 TOPS (NNA), TensorFlow Caffe
Audio	CEC, Dynamic HDR HDCP 2.2/2.3 PHY HDMI 2.1a eARC, VRR, QMS, QFT, ALLM, DSC SBTM 8Kp60 MP3, AAC, WMA, RM, FLAC, Ogg Vorbis, Opus, SRS TruVolume, Dolby Audio, DTS 7.1/5.1 VAD
Network	SPDIF 192kHz 16/24/32 48kHz x 32ch 192kHz x 16ch x 16ch TDM/PCM 384kHz x 32ch x 16ch I2S TDM/PCM/I2S 3 CIC, LPF, HPF PDM 8 DMIC DAC
Connectivity	10/100/1000 MAC
USB	USB XHCI OTG 2.0 1, USB 2.0 2, PCIe 2.0 USB 3.0(5Gbps) 1

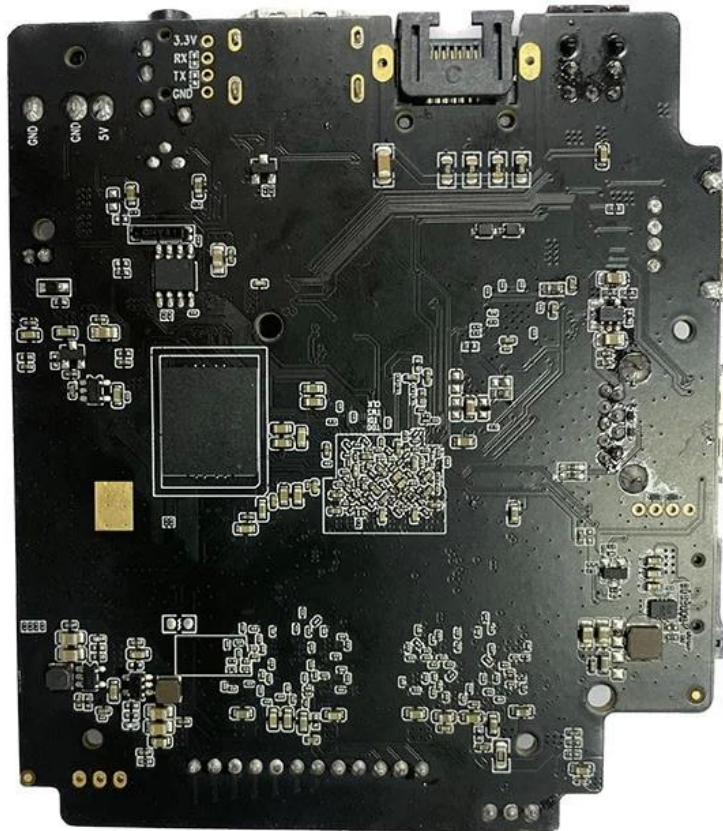
# S928X



\* Supported configuration: PCIe 2.0 port + USB 2.0 Host, or USB3.0 port without PCIe.







Amlogic S928X-J ARM Cortex-A76, ARM Cortex-A55 SoC. AV1, H.265, VP9, AVS3, AVS2 8Kp60 4K GUI, SR

Amlogic S928X-J 8Kp60 4K GUI, SR

S928X-J 8Kp60 4K GUI, SR

S928X-J 8Kp60 4K GUI, SR

S928X-J 8Kp60 4K GUI, SR

