

# Android 12 64bit 6GB RAM 128GB Storage 5G LTE 5MP Camera

CPU		Amlogic S922X
GPU		ARM Mali-G52 MP4(6EE) OpenGL ES 3.2, Vulkan 1.1 OpenCL 2.0
RAM		DDR4 2GB/4GB
ROM		16GB eMMC(128GB)
OS		Android 9.0
Video & Audio		
Video		4K H265 10Bit, H.264, AVS, MPEG-2
Audio		MPEG1, MPEG2, MPEG4, H.264, WMV, MKV, TS, flv MP3
Connectivity		
Display		1x LVDS 40pin 2.0mm, 8pin, 10pin
HDMI		1x HDMI
AV		1x AV
Camera		x1, MIPI CSI
Power		4pin 2.5mm 25W@2, 3W@2
Network		x1, 10M/100M WiFi, 2.4G, 5G
Storage		PCIE (4G) x1, M.2 (4G) x1
USB		USB OTG x1, USB x7
Buttons		x2, 6pin 2.0mm
LED		x1, 7pin 2.0mm
TF		x4
SIM		x1
RTC		x1
Power		12V, 2.5DC

Amlogic S922X 64bit Cortex-A73 CPU, Mali-G52 MP4 GPU, 4K H265 10bit video, 2.4G/5G WiFi, 4.1 LTE, 5MP camera, 16GB eMMC, 2GB/4GB RAM, Android 9.0.

Amlogic S922X 64bit Cortex-A73 CPU, Mali-G52 MP4 GPU, 4K H265 10bit video, 2.4G/5G WiFi, 4.1 LTE, 5MP camera, 16GB eMMC, 2GB/4GB RAM, Android 9.0. Features include 4K H265 10bit video, 2.4G/5G WiFi, 4.1 LTE, 5MP camera, 16GB eMMC, 2GB/4GB RAM, and Android 9.0.

## Features

- o Amlogic 64bit Cortex™ A73 CPU & ARM® Cortex™ A53 CPU
- o ARM Mali-G52 MP4 GPU

- o HW UHD 4K@265 75fps 10bit 1080p H.265/H.264 60fps
- o Dolby Vision, HDR10, HDR10+, HLG, PRIME HDR
- o Cortex-M4
- o DRM TrustZone
- o WIFI, BT, USB, SD, ...
- o ...

Amlogic S922X Android OTT/IPTV (STB) CPU, GPU 4K HDR AP

ARM Cortex-A73 CPU Cortex-A53 L2 NEON SIMD

ARM Mali-G52 MP4 GPU OpenGL ES 3.2 Vulkan 1.0 OpenCL 2.0 2.5D CPU GPU Dolby Vision HDR10, HDR10+, HLG, PRIME HDR, REC709/BT2020

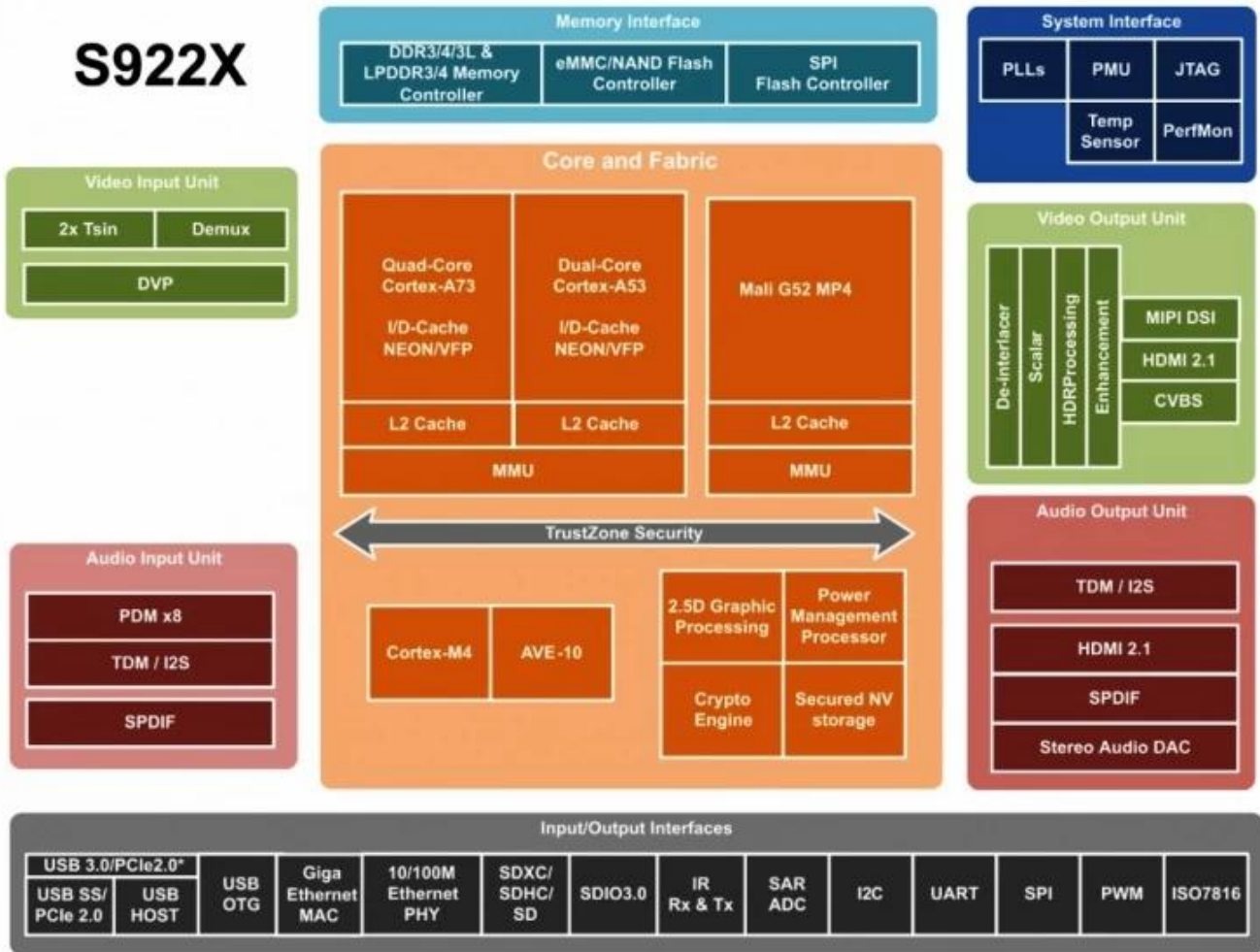
Amlogic Video Engine(AVE-10) Cortex-A53 CPU TVP(75fps 4Kx2K) MVC, MPEG-1/2/4, VC-1/WMV, AVS, AVS, AVS2 RealVideo, MJPEG, H.264, H265-10, VP9 JPEG H.265/H.264 60fps 1080p

Amlogic S922X 3D, HDR, CEC HDCP 2.2 HDMI2.1 DAC, CVBS, 4 MIPI DSI, TDM, PCM I2S SPDIF 8 PDM(DMIC) DVP

Amlogic S922X TV 2

RGMIII 10/100/1000M MAC, 10/100M PHY, USB XHCI OTG 2.0 1, USB3.0 PCIe 1

# S922X



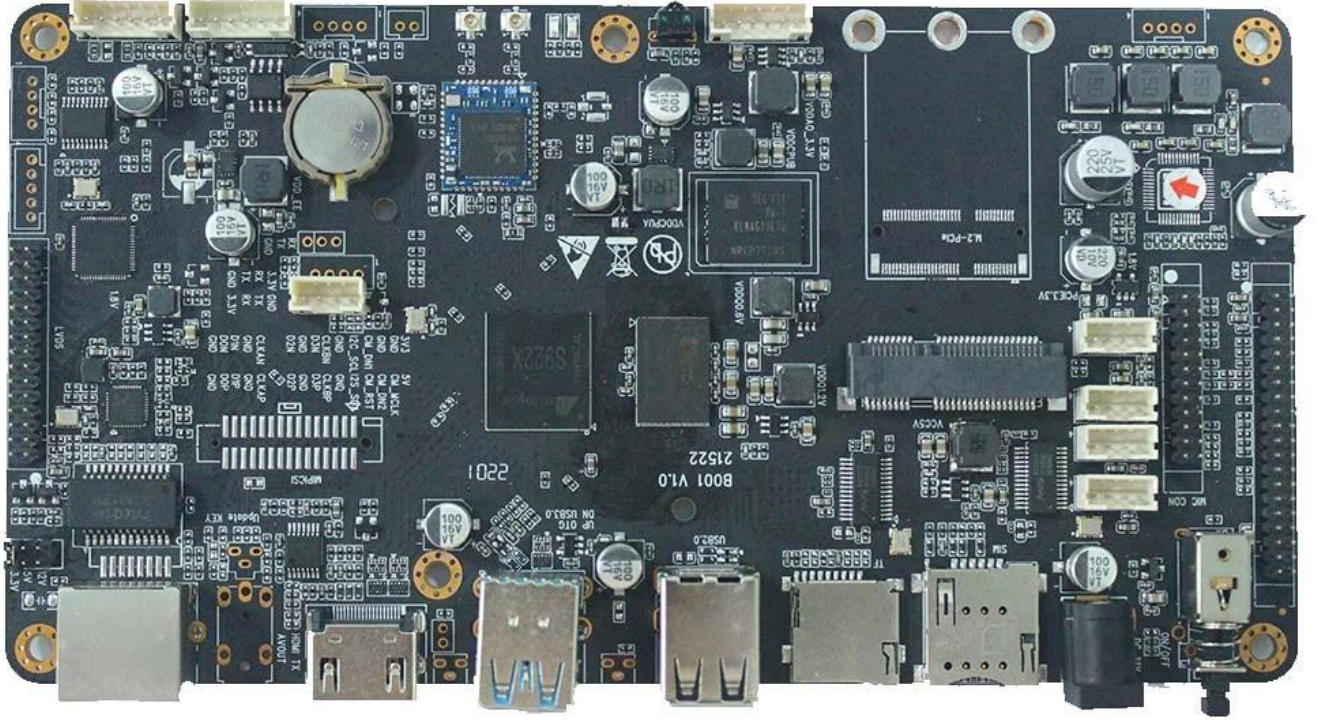
Supported configuration: PCIe2.0 port + USB2.0 Host, or USB3.0 without PCIe

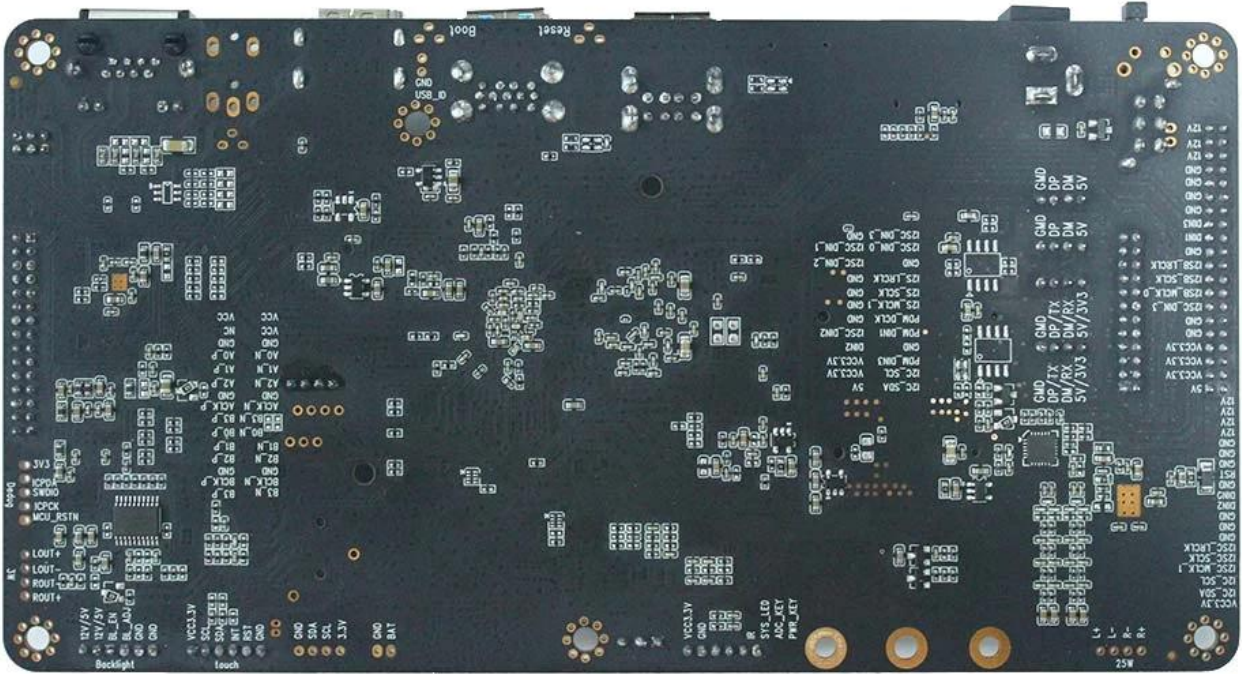
S055T01



180mm\*95mm\*20mm







□□□ □□

Amlogic S922X Android □□ □□ □□□□ □□□□ □□□□-LCD □□□□ □□ □□□ UHD 4K@60fps □□□□ □□□□ □□□□ □□□□ Amlogic S922X 12nm □□ □□ □□□□□□. □□ H.265 10□□, H.264, AVS □ □□ □□□ □□□ □□□□□□. □□ □□ UART □ USB □□□□□□ □□ HDR10 □ HLG □□ □□ □□ □□□ □□. Bluetooth, WIFI, 4G □ □□□ □□□ □□□□□□. AV □□ □□, SD □□ □□□ □□□□□□. □□□□ □□□□□□ □□ □□, □□ □□□ □□, □□□ □□/□□□□□, 3D □□□, □ □/□□ □□, □□□ □□ □□ □□□/□□□□□, AI □□□□□□ □□ □□□ □□ □□□ □□□□□□ □□□□ □□□□□□. □□, □□, □□, □□, □□□□ □ □□□ □□ □□□ □□□□ □□ □□□□□ □ □□□ □ □□□□□.

- (1) □□□ □□□□□□
- 1□□ LVDS □□□□ □□(40□)
- 1□□ HDMI □□□□ □□
- 5□□ USB2.0
- 4□□ RS232 (□□□□ USB2.0□□ □□ □□)
- 1□□ MIPI CSI
- 1□□ AV □□
- 1□□ I2C
- I2SC/IS2B
- 1□□ 25W □□□□□□ □ 3W □□□ □□□□□□
- (2) □□□□ □□□□ □□□□ □□□□ □□□□

- 4G, WiFi 4G 4K 30FPS 60FPS 1080P 4K 60FPS
- (3) 4K 30FPS 60FPS 1080P 4K 60FPS
- 4K 30FPS 60FPS 1080P 4K 60FPS
- U 4K 30FPS 60FPS 1080P 4K 60FPS
- 4K 30FPS, 60FPS, 1080P 4K 60FPS

CPU

- CPU
- (1) ARM Cortex-A73 ARM Cortex-A53 CPU
- (2) Neon Crypto ARMv8-A
- (3) L2
- (4) Cortex-M4
- (5) TrustZone
- (6) QoS

3D

- (1) ARM Mali-G52 MP4(4ppc) GPU
- (2) 8x8, 2x2, 6x8 (EE)
- (3)
- (4) OpenGL ES3.2, Vulkan 1.0 OpenCL 2.0

Video

- (1) Amlogic Video Engine(AVE)
- (2) 4Kx2K@60fps 1x1080P@60fps
- (3) "H.265" HEVCMP-10@L5.1 4Kx2K@60fps
- (4) VP9-2 4Kx2K@60fps
- H.265 HEVCMP-10@L5.1 4Kx2K@60fps
- AVS2-P2 4Kx2K@60fps
- H.264 AVCHP@L5.1 4Kx2K@30fps
- H.264 MVC 1080P@60fps
- MPEG-4 ASP@L5 1080P@60fps(ISO-14496)
- WMV/VC-1 SP/MP/AP 1080P@60fps
- AVS-P16(AVS) /AVS-P2 JiZhun 1080P@60fps
- MPEG-2 MP/HL 1080P@60fps(ISO-13818)
- MPEG-1MP/HLupto1080P@60fps(ISO-11172)
- RealVideo 8/9/10 1080P@60fps
- MJPEG JPEG (ISO/IEC-10918)
- JPEG \*.mkv, \*.wmv, \*.mpg, \*.mpeg, \*.dat, \*.avi, \*.mov, \*.iso, \*.mp4, \*.rm \*.jpg
- (5) H.265/H.264 1080P@60fps H.265/H.264

Display

- (1) CEC, Dynamic HDR HDCP 2.2, 4Kx2K@60 PHY HDMI 2.1
- (2) CVBS 480i/576i
- (3) SD/HD/FHD 480i/p, 576i/p, 720p, 1080i/p 4Kx2K
- (4) 4x MIPI DSI 1920\*1080

IO



CPU

- (7) ARM Cortex-A73
- (8) Neon Crypto ARMv8-A
- (9) L2
- (10) Cortex-M4
- (11) TrustZone
- (12) QoS

3D

- (5) ARM Mali-G52 MP4(4ppc) GPU
- (6) 8x, 2x, 6x8x (EE)
- (7)
- (8) OpenGL ES3.2, Vulkan 1.0, OpenCL 2.0

- (6) Amlogic Video Engine(AVE)
- (7) 4Kx2K@60fps
- (8) " "
- (9)
- VP9-2 4Kx2K@60fps
- H.265 HEVCMP-10@L5.1 4Kx2K@60fps
- AVS2-P2 4Kx2K@60fps
- H.264 AVCHP@L5.1 4Kx2K@30fps
- H.264 MVC 1080P@60fps
- MPEG-4 ASP@L5 1080P@60fps(ISO-14496)
- WMV/VC-1 SP/MP/AP 1080P@60fps
- AVS-P16(AVS) /AVS-P2 JiZhun 1080P@60fps
- MPEG-2 MP/HL 1080P@60fps(ISO-13818)
- MPEG-1MP/HL upto 1080P@60fps(ISO-11172)
- RealVideo 8/9/10 1080P@60fps
- MJPEG JPEG (ISO/IEC-10918)
- JPEG
- \*.mkv, \*.wmv, \*.mpg, \*.mpeg, \*.dat, \*.avi, \*.mov, \*.iso, \*.mp4, \*.rm \*.jpg

- (10)
- JPEG H.265/H.264
- JPEG
- 1080P@60fps H.265/H.264

- (5) CEC, Dynamic HDR, HDCP 2.2, 4Kx2K@60, PHY, HDMI 2.1
- (6) CVBS 480i/576i
- (7) SD/HD/FHD: 480i/p, 576i/p, 720p, 1080i/p, 4Kx2K
- (8) 4x MIPI DSI, 1920\*1080

Amlogic S922X Android TV. 4K. , , .