

Realtek RTD1295 Android TV Box 4K Android TV Box

| Realtek RTD1295 Android TV Box 4K Android TV Box | | |
|--|---|--------------------------------------|
| Realtek RTD1295 SOC 4K Android TV | Realtek RTD1295 SOC 4K Android TV | |
| CPU | Realtek RTD1295 Cortex-A53 64 @2GHz | |
| GPU | ARM-T820 | |
| RAM | DDR4 : 2GB (1GB) | |
| Storage | EMMC : 16GB (8GB) | |
| Bluetooth | BT4.0 | |
| I/O | 1*HDMI | 4K*2K UHD, HD 2.0A |
| | 1*HDMI | HD (HD1.4A ~ HD2.2A), 1.4 ~ 2.2 HDCP |
| | 1*av | 1* USB 2.0, 1* USB 3.0 |
| | 2*USB | 1* USB 2.0, 1* USB 3.0 |
| | 1*RJ45 | 10/100/1000Mbps |
| | 1*TF | 4GB ~ 64GB |
| | 1*ATTENNA | 5dB External Antenna |
| | USB | USB 2.0/3.0; Bluetooth |
| | DC 5V/2A | DC 5V/2A |
| | OS | Android 6.0 |
| Video | Codec H.264 2k@60fps/4k@24fps , H.265 4K@60fps | |
| Audio | H.265 4K@60fps, VP9 4k@60fps, Ture Dolby Digital DTS HD | |
| Image | HD (7.1ch) Blu-ray 24 | |
| File | HD JPEG, BMP, GIF, PNG, TIF | |
| App | Netflix, Hulu, Flixster, YouTube | |
| Market | Android Market, Amazon App Store | |
| Storage | HDD, U Disk, SD/MMC | |
| Connect | Skype Video Call, MSN, Facebook, Twitter, QQ | |
| DLNA | DLNA | |
| 2.4G | 2.4G | |

Smart BOX



4K
ULTRA HD

3D

SATA
3.0



4Core
64Bit

Video
Input

DVR

HDR

VP9



2GB
RAM

16GB
eMMC

2GB DDR4 RAM to make the game run more smoothly, eMMC to run more stable.

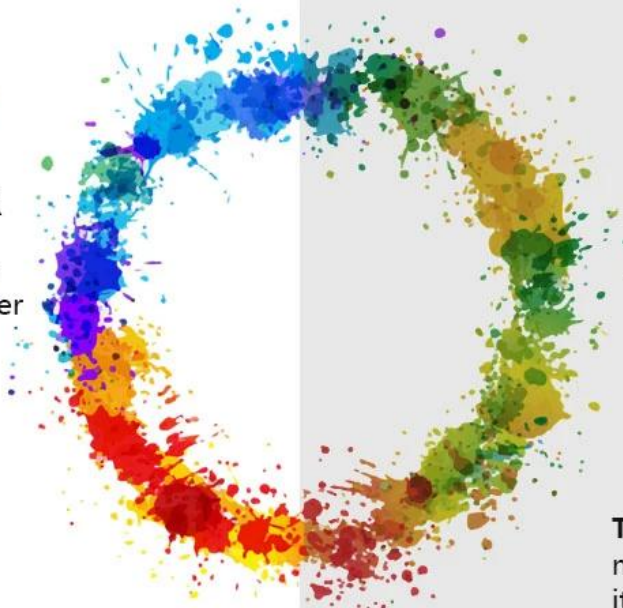




Advanced sound decoding technology,
a better user experience

ENHANCED COLOR

Provide a better color level, so that the viewer presents a greater degree of reality



The general color display, not bright and true, it is because the color gamut is not enough



Selecting a Sub Display in PIP Mode

The diagram illustrates the process of selecting a sub display in PIP mode on a Smart TV Box. It consists of three main parts: a sequence of steps, a screenshot of the PIP settings menu, and a screenshot of the Smart TV Box home screen.

Step 01: Select APP "Setting". This is indicated by an orange arrow pointing to the "Setting" app icon on the home screen.

Step 02: Select "Start PIP". This is indicated by a green arrow pointing to the "Start PIP" button in the PIP settings menu.

Step 03: Multiple windows display content. This is indicated by a pink arrow pointing to the "PIP" label and the Smart TV Box device.

PIP Settings Menu: The screenshot shows the "HDMI IN" PIP settings. It includes a "Start PIP" button, a "Broadcast" button, a "Record" button, and a "Reservation" button. The "Resolution" is set to "1920x1080" and the "Output path" is "/storage/emulated/0/Pictures/HDMIxDemo".

Smart TV Box Home Screen: The screenshot shows the "Smart TV Box" home screen with various app icons: "HDMI IN", "Apps", "facebook", "KD PLAYER", "You Tube", "Settings", "Chorme", "Skype", "Play Store", and "Mu". A small inset window shows a game scene.



Copy and burn what you want



4.0
Bluetooth®



Bluetooth 4.0 makes it easy to connect your keyboard, mouse, game console, and more









4K **3D** **DVR**
ULTRA HD



Realtek RTD1295 Android TV Box 係 32 位元 4K 電視盒。4K Android TV Box 係 32 位元 4K 電視盒，支持 4K 電視盒。

RealTek RTD1295 係 32 位元 Android TV 電視盒，支持 4K 電視盒，支持 4K 電視盒。

RealTek RTD1295 係 32 位元 Android TV 電視盒，支持 4K 電視盒，支持 4K 電視盒。

RealTek RTD1295 係 32 位元 Android TV 電視盒，支持 4K 電視盒，支持 4K 電視盒。

RealTek RTD1295 係 32 位元 Android TV 電視盒，支持 4K 電視盒，支持 4K 電視盒。

RealTek RTD1295 係 32 位元 Android TV 電視盒，支持 4K 電視盒，支持 4K 電視盒。

