

TV 4K Amlogic S922X



产品	
产品	TV 4K Amlogic S922X
CPU	Amlogic S922X 64位 ARM® Cortex™ A73 CPU / ARM® Cortex™ A53 CPU
GPU	ARM Mali™-G52 MP4 GPU
ROM	2GB/4GB LPDDR4
内存	16GB / 64GB eMMC
系统	Android 9.0
功能与特性	
视频解码	<p>支持 Amlogic Video Engine(AVE)</p> <p>HW UHD 4K H.265 75fps 10bit / 1080p H.265/H.264 60fps</p> <p>4Kx2K@60fps/1x1080P@60fps</p> <p>VP9 2 / 4Kx2K@60fps</p> <p>H.265 HEVC MP-10@L5.1 / 4Kx2K@60fps</p> <p>AVS2-P2 / 4Kx2K@60fps</p> <p>H.264 AVC HP@L5.1 / 4Kx2K@30fps</p> <p>H.264 MVC / 1080P@60fps</p> <p>MPEG-4 ASP@L5 / 1080P@60fps(ISO-14496)</p> <p>WMV/VC-1 SP/MP/AP / 1080P@60fps</p> <p>AVS-P16(AVS) /AVS-P2 JiZhun / 1080P@60fps</p> <p>MPEG-2 MP/HL / 1080P@60fps(ISO-13818)</p> <p>MPEG-1 MP/HL / 1080P@60fps(ISO-11172)</p> <p>RealVideo 8/9/10 / 1080P@60fps</p> <p>1080P@60fps H.265/H.264</p> <p>MJPEG / JPEG (ISO/IEC-10918)</p> <p>JPEG, *mkv,*.wmv,*.mpg,*.mpeg,*.dat,*.avi,*.mov,*.iso,*.mp4,*.rm*.jpg</p> <p>Dolby Vision, HDR10, HLG, PRIME HDR</p>
视频编码	<p>H.265/H.264</p> <p>JPEG / H.265/H.264 / 1080P@60fps)</p>
接口	<p>CEC, Dynamic HDR, HDCP 2.2, PHY, HDMI 2.1, 4Kx2K@60, C VBS 480i/576i</p> <p>SD/HD/FHD: 480i/p, 576i/p, 720p, 1080i/p / 4Kx2K 4 MIPI DSI</p> <p>1920*1080</p> <p>MP3, AAC, WMA, RM, FLAC, Ogg 7.1/5.1</p> <p>SPDIF/IEC958 / PCM / TDM/PCM/I2S 3</p> <p>TDM/PCM: 84kHz x32 x 8 / 96kHz x 32 x 32 / I2S 384kHz x 32x8</p> <p>CIC, LPF / HPF / PDM 8 DMIC DAC</p> <p>I2SPCM</p>
视频格式	HD MPEG1/2/4, H.265/HEVC, HD AVC/VC-1, RM/RMVB, Xvid/DivX3/4/5/6, RealVideo8/9/10
音频格式	Avi/Rm/Rm vb/Ts/Vob/Mkv/Mov/ISO/wmv/asf/flv/dat/mpg/mpeg
音频格式	MP3/WMA/AAC/WAV/OGG/DDP/TrueHD/HD/FLAC/APE
图片格式	HD JPEG/BMP/GIF/PNG/TIFF
接口	
USB	USB2.0, 480Mbps/USB3.0, 5.1Gbps
SIM	SIM
HDMI	HDMI 2.2/1 1.4 / EDP
其它	RJ45 100/1000M

WiFi/BT	AP63985(WiFi/BT) 2.4G5.8G
4G	PCIe
TF	MicroSD(Up to 128G)
HDD	SATA Max2TB (Optional)
Power	12V DC/3AΦ5.5*Φ2.5mm

It offers excellent performance, high resolution, 3D, and other features, making it an ideal choice for AI applications. It also supports various protocols and standards, ensuring compatibility and ease of integration.

The Amlogic S922X is a 12nm AI SoC. It features a CPU, GPU, and 4K video processing capabilities. The S922X is based on the Cortex-A73 CPU and Cortex-A53 CPU. It supports various video formats and standards, including H.264, H.265, VP9, and JPEG. It also supports various audio formats and standards, including PCM, I2S, SPDIF, and PDM. The S922X is a powerful and versatile SoC for AI applications.

Features:

- o Amlogic 64-bit ARM® Cortex™ A73 CPU and ARM® Cortex™ A53 CPU
- o ARM Mali-G52 MP4 GPU
- o HW UHD 4K@H.265 75fps 10-bit and 1080p H.265/H.264 60fps
- o Dolby Vision, HDR10, HDR10+, HLG, and PRIME HDR
- o Cortex-M4
- o DRM and TrustZone
- o WiFi, BT, USB, SD, and other peripherals
- o AI capabilities

Amlogic S922X is an Android SoC for OTT/IPTV (STB) applications. It features a CPU, GPU, and 4K video processing capabilities. It also supports various video formats and standards, including H.264, H.265, VP9, and JPEG. It also supports various audio formats and standards, including PCM, I2S, SPDIF, and PDM. The S922X is a powerful and versatile SoC for AI applications.

The CPU is based on the ARM Cortex-A73 and Cortex-A53. It features a Big.LITTLE architecture. The GPU is based on the ARM Mali-G52 MP4. It supports various video formats and standards, including H.264, H.265, VP9, and JPEG. It also supports various audio formats and standards, including PCM, I2S, SPDIF, and PDM. The S922X is a powerful and versatile SoC for AI applications.

The S922X is a powerful and versatile SoC for AI applications. It features a CPU, GPU, and 4K video processing capabilities. It also supports various video formats and standards, including H.264, H.265, VP9, and JPEG. It also supports various audio formats and standards, including PCM, I2S, SPDIF, and PDM. The S922X is a powerful and versatile SoC for AI applications.

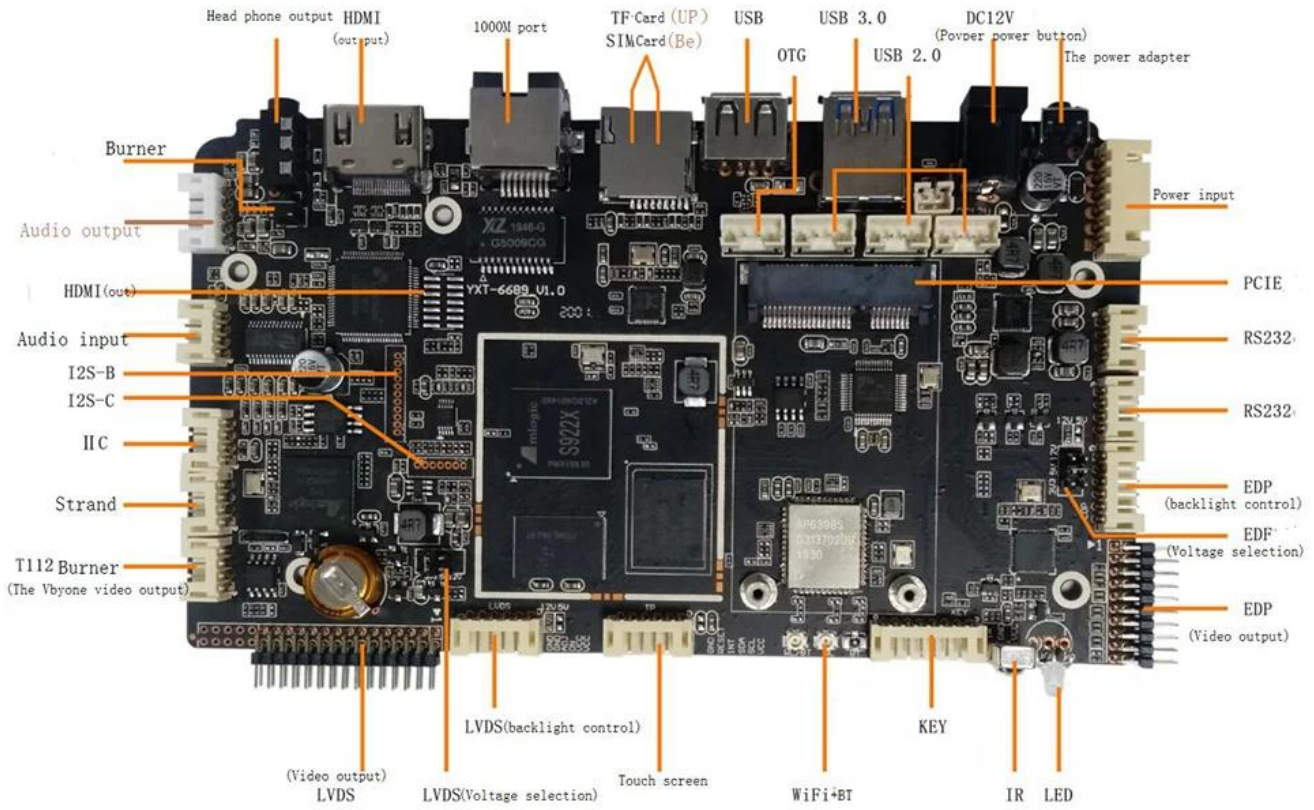
□, □□□□ □□□□□ □□□ □□□ □ □□ □□ □□ □□□□□.

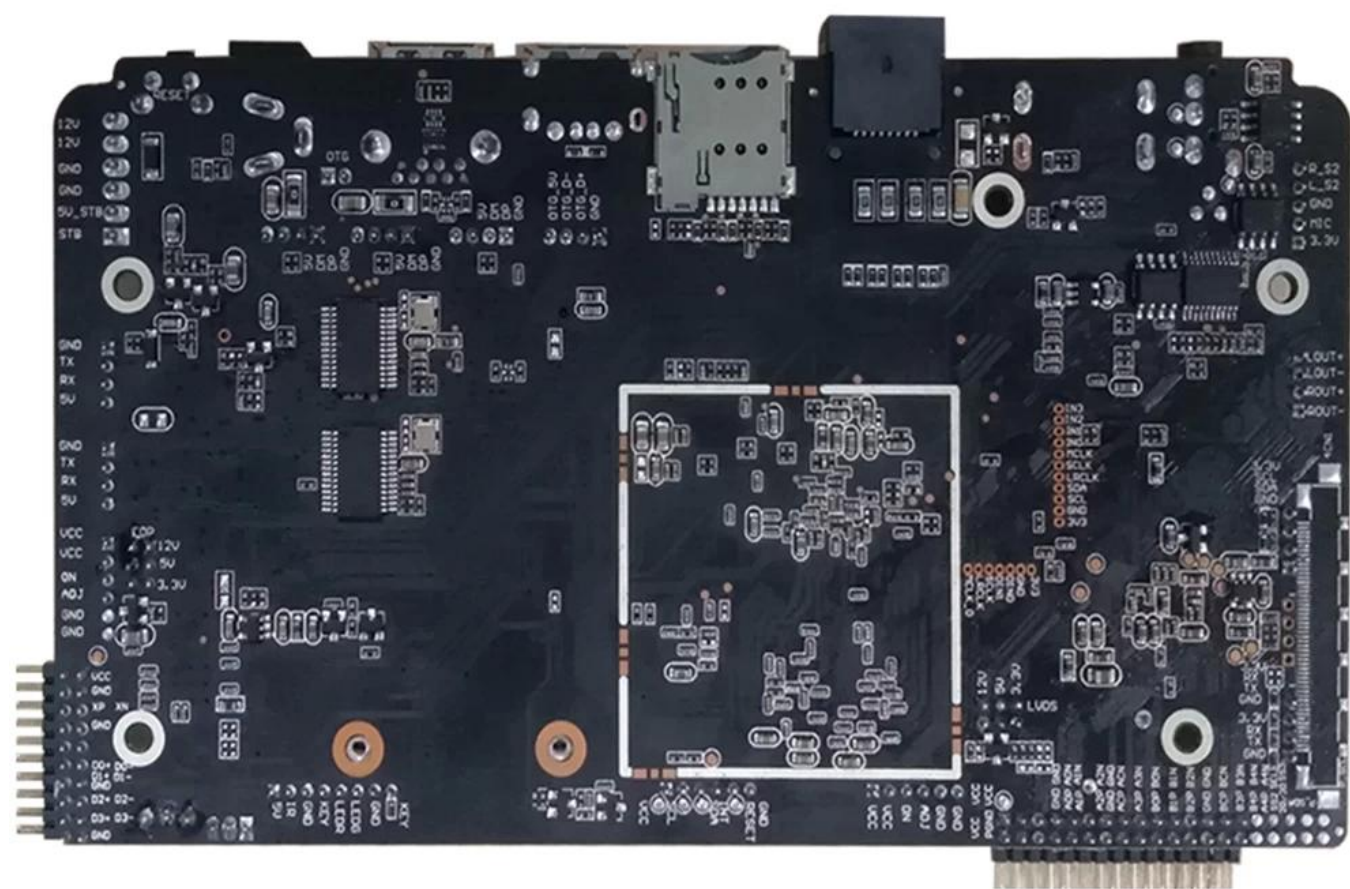
Amlogic Video Engine(AVE-10)□ □□ □□□ □□ □□□□ Cortex-A53 CPU□ □□□□□□□. □□□□ □□ □□□□ □□□ □□ □□ □□□□ □□□□. AVE-10□ □□ □□□□□□□ □□ □□□ TVP(□□□□ □ □□ □□□ □□)□ □□□□ 75fps□□ 4Kx2K □□□ □□□□ □□□ □□ □□□ MVC, MPEG-1/2/4, VC-1/WMV, AVS, AVS, AVS2 RealVideo, MJPEG□ □□□ □□ □□□ □□□□□. □□□□, H.264, H265-10, VP9 □ □□□□ □□□ □□ JPEG □□□□ □□□□□. □□ □□□□ JPEG □□ H.265/H.264□ 60fps□□ □□ 1080p□ □□□□ □ □□□□.

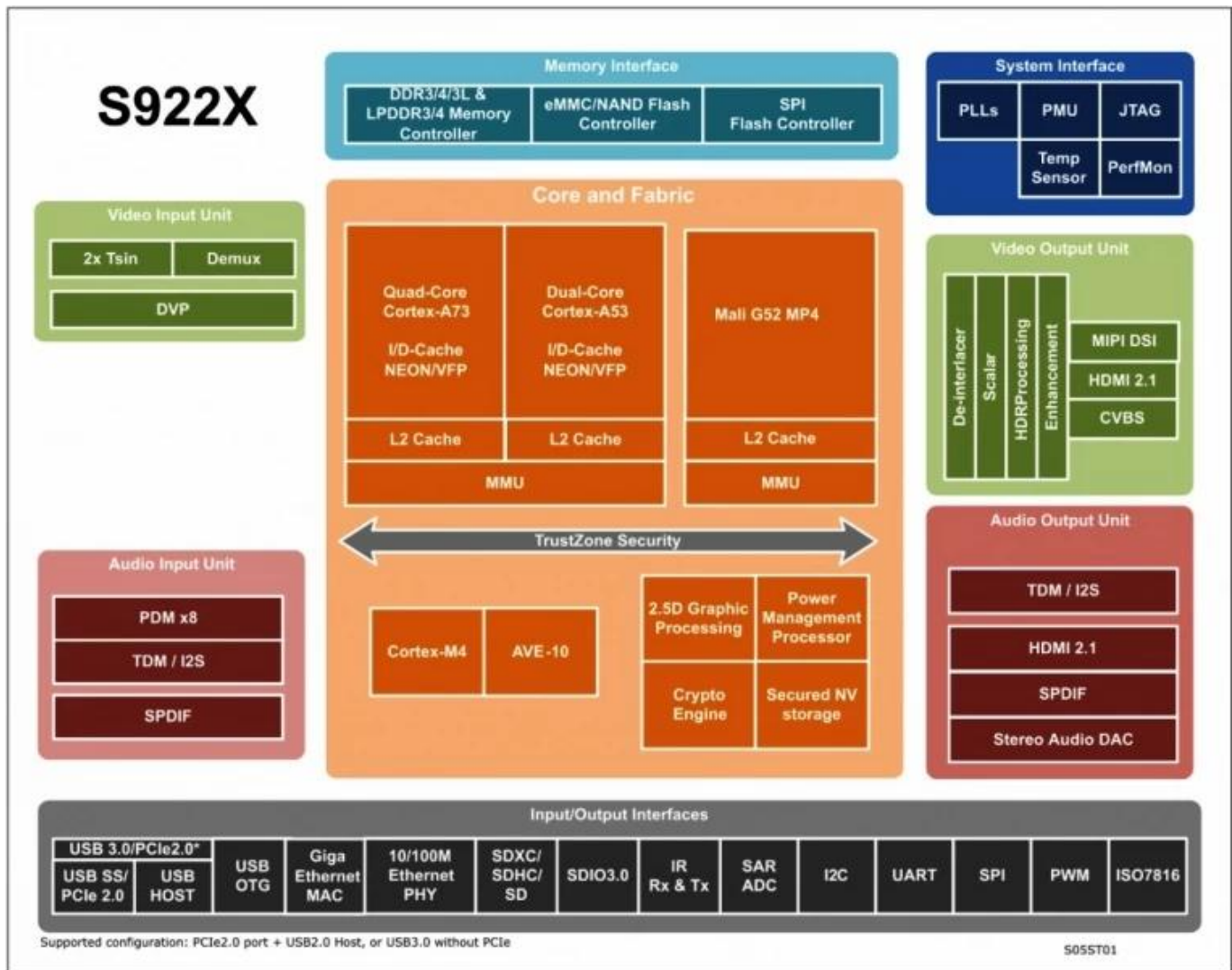
Amlogic S922X□ 3D, □□ HDR, CEC □ HDCP 2.2□ □□□□ HDMI2.1 □□□, □□□□ □□□ DAC, CVBS □□, 4□□ MIPI DSI □□□□□, □□ TDM, PCM□ □□□ □□ □□ □□□/□□□□ □□/□□ □□□□□□ □□□□□. I2S □ SPDIF □□□ □□□ □□/□□ □□□□□, 8□□ □□□□ PDM □□□ □□□(DMIC) □□ □ DVP□□□ □□□□□.

Amlogic S922X□ □□ □□□ TV □□ □□□□ □□ □□ □□ □□□□□. □□□□ 2□□ □□□□□ □□ □□/□□□□ □□□ □ □□ □□ □ □□ □ □□□□ □□ □□□□□ TV □□□□ □□□□□.

□□□□□□ RGMII□ □□□□ 10/100/1000M □□□□ MAC, 10/100M □□□□ PHY, USB XHCI OTG 2.0 □□ 1□, USB3.0 □□ PCIe 1□□ □□□ □□□ □□ □□□□ □ □□ □□ □□□□□□ □□□□□.







Amlogic S922X 是 4K 电视 SoC 的领导者。它支持 4K 分辨率、HDR 视频、Dolby Vision 和 Dolby Atmos 音频。它还支持多种输入输出接口，如 HDMI、USB、SD 卡等。此外，它还支持多种操作系统，如 Android TV、Linux 等。

1. 性能卓越: Amlogic S922X 采用四核 Cortex-A73 处理器，搭配 Mali G52 MP4 图形处理器，提供卓越的性能和流畅的视频播放体验。
2. 4K 超高清 HDR 视频: 支持 4K 分辨率 HDR 视频播放，带来更清晰、更生动的画面效果。
3. 大容量存储: 支持大容量 RAM 和 eMMC/SD 存储，满足用户对大容量存储的需求。
4. 丰富的接口: 支持多种输入输出接口，如 HDMI、USB、SD 卡等，方便用户连接各种外设。
5. 支持多种操作系统: 支持 Android TV、Linux 等多种操作系统，为用户提供更多的选择。
6. 支持 TV OS: 支持 Android TV 操作系统，内置 Google Play 商店，支持各种 TV 应用。
7. 低功耗设计: 采用低功耗设计，降低功耗，延长设备的使用寿命。

8. 00 0000: 0000 000 000000 00 0000 00 0000 00 0000 00000 000000.

9. 000 000: 00 00 0000 00000 00000 00000 0 0000 00 0 0000000 0000 000000 00000000.

10. 0000 00: 0000 0000 0 00 00 00000000 00000 0000 00000 00 0000 0 00 00 0000 00000000.

0 0000000 0000 0000000000. [TV Box](#) 4K Amlogic S922X 00 00000 00000 00 00 0000 0000000000 0000 0000000.