

# Amlogic S905 Quad Core Android 5.1 Lollipop 1G 8G 4K 2K UHD Output Media Player S9

S9

## Amlogic S905 Quad Core S9

New! Amlogic S905 Quad Core ARM Cortex™-A53 CPU  
up to 2.0 GHz, 1GB/8GB H.265 4K2K Android 5.1 TV Box!



S905

1GB  
8GB



DLNA  
CERTIFIED

H.265  
HEVC

4k2k



Android 5.1

FULL HD  
1080P



| Hardware Specifications                                                                     |                                                                             |
|---------------------------------------------------------------------------------------------|-----------------------------------------------------------------------------|
| Model No.                                                                                   | S9                                                                          |
| CPU                                                                                         | Amlogic S905 Quad Core ARM Cortex™-A53 CPU up to 2.0 GHz (DVFS)             |
| GPU                                                                                         | Penta-Core Mali-450 Up to 750Mhz+                                           |
| FLASH                                                                                       | 8GB                                                                         |
| DDR3                                                                                        | 1GB DDR3                                                                    |
| Moudle                                                                                      | Aluminium: Black Color                                                      |
| Power                                                                                       |                                                                             |
| Power Supply                                                                                | DC 5V/2A                                                                    |
| Power Indicator (LED)                                                                       | LED indicator, working: Blue, Standby: Red Standby Power: <0.5W             |
| Software                                                                                    |                                                                             |
| OS                                                                                          | Android™ 5.1 Lollipop                                                       |
| Video                                                                                       | H.265 HEVC MP-10@L5.1 up to 4Kx2K@60fps                                     |
|                                                                                             | H.264 AVC HP™@L5.1 up to 4Kx2K@30fps                                        |
|                                                                                             | H.264 MVC up to 1080P@60fps                                                 |
|                                                                                             | MPEG-4 ASP@L5 up to 1080P@60fps (ISO-14496)                                 |
|                                                                                             | WMV/VC-1 SP/MP/AP up to 1080P@60fps                                         |
|                                                                                             | AVS-P16(AVS+) /AVS-P2 Profile up to 1080P@60fps                             |
|                                                                                             | MPEG-2 MP/HL up to 1080P@60fps (ISO-13818)                                  |
|                                                                                             | MPEG-1 MP/HL up to 1080P@60fps (ISO-11172)                                  |
|                                                                                             | RealVideo 8/9/10 up to 1080P                                                |
|                                                                                             | WebM up to VGA                                                              |
| Multiple Language and Multiple Format Sub-title Video Support                               |                                                                             |
| MJPEG and JPEG Unlimited Pixel Resolution Decoding(ISO/IEC-10918)                           |                                                                             |
| Supports JPEG Thumbnail, Scaling, Rotation and Transition effects                           |                                                                             |
| Supports *.mkv,*.wmv,*.mpg,*.mpeg,*.dat,*.avi,*.mov,*.iso,*.mp4,*.rm and *.jpg file Formats |                                                                             |
| Audio                                                                                       | Low Power MediaCPU with DSP Audio Processing                                |
|                                                                                             | Supports MP3, AAC, WMA, RM, FLAC, Ogg and Programmable with 5.1 down-mixing |
|                                                                                             | Built-in SPDIF/IEC958 and PCM Serial Digital Audio input/output             |
| Image                                                                                       | HD JPEG, BMP, GIF, PNG, TIF                                                 |
| Support language                                                                            | Chinese, English, Germany, Japanese, Korea etc. Multi languages             |
| I/O                                                                                         |                                                                             |
| 1*HDMI™                                                                                     | 4K*2K UHD Output, HDMI™ 2.0                                                 |
| 1*AV OUT                                                                                    | 480i/576i Standard Definition output                                        |
| 3*USB                                                                                       | 2*USBHost Port , 1*USB Device                                               |
| 1*OPTICAL                                                                                   | Digital Audio output                                                        |
| 1*RJ45                                                                                      | Ethernet Interface, 1000M LAN                                               |
| 1*SD™/MMC CARD                                                                              | Support 4GB/8GB/16GB/32GB/64GB                                              |
| Appliactions                                                                                |                                                                             |
| Online                                                                                      | Browse all video websites, support Netflix, Hulu, Flixster, Youtube, etc.   |

|             |                                                                                                  |
|-------------|--------------------------------------------------------------------------------------------------|
| Apps        | Apps download freely form android market, amazon™ app store etc.                                 |
| Medium      | Local Media playback, Support HDD, U Disk, SD™/MMC Card.                                         |
| Talk Online | Support SKYPE video call, MSN, facebook, twitter, QQ etc.                                        |
| Others      | Support Email, Office Suit etc.<br>Support DLNA Function<br>Support 2.4G Wireless Mouse/Keyboard |

**Features:**

**Amlogic S905 Quad Core**,it is support high speed of Wi-Fi for network applications, it supports 2.4GHz wireless mouse, keyboard and air remote, full HD1080p video encoding, advanced features such as PPPOE,DLNA and Miracast, USB hard disk.

**What's in the box ?**

- 1\*Amlogic S905 Quad Core
- 1\*HDMI Cable
- 1\*Remote Control
- 1\*Power Adapter
- 1\*User Manual



# Picture Show



Indicator



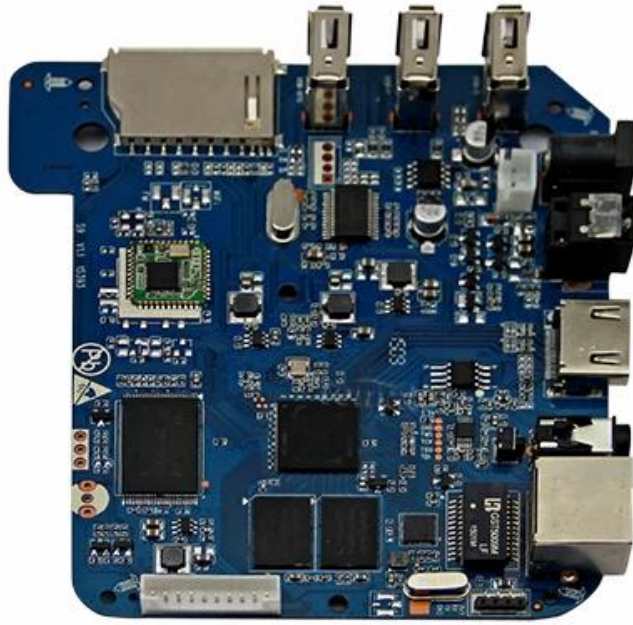
USB\*3

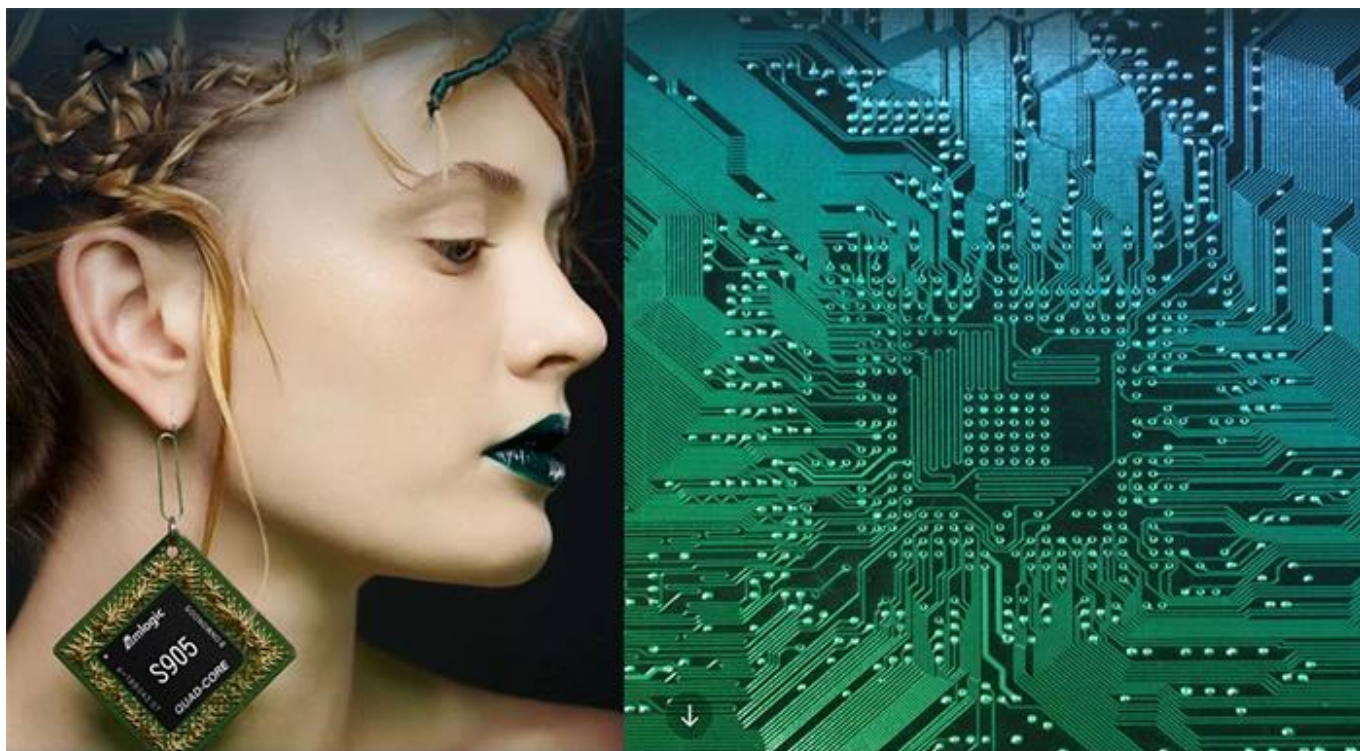
SD/MMC Card



ON/OFF Button      DC Port      RJ45 ETHERENT      AV Port      HDMI™      OPTICAL PortT







# S905

64-Bit  
Quad Core  
Cortex A53

4K

H.265  
@60fps

HDMI 2.0  
HDCP 2.2

TSMC  
28NM

DRM



**64 bit CPU,**

While maintaining the same power consumption, the computing power of CPU has also been greatly improved.

With 4K2K decoding capabilities,  
it make 4K become the standard.



---

The color quantity is increase by 60 times more than the previous generation.



10 bit decoding, it could highest support 1.07 billion color,  
Compared to the previous generation of 16.7 million colors, it increase by 60 times.

---

The sound upgrade,  
while supporting Dolby Digital Plus and DTS.





3 + 2 core high-frequency GPU,  
it make the TV turn into the PlayStation.



The single core CPU frequency increase of 25%, 5-core computing speed can be achieved by the previous generation 8-core, it allowing you to experience smooth gaming.

Support 802.11ac WiFi protocol.

200 Mbps  
实际速率

120 Mbps  
上一代实际速率



Wireless projection the image&video  
of the phone/computer onto the TV.



Miracast



Airplay



DLNA



SMB  
共享协议



Intel@WIDI

Equipped with smart contiguous  
memory allocation technology,  
make the system running more smoothly.



---

# 4.1



# Bluetooth<sup>®</sup>

---



HD2.0  
Image output



HD1.0  
Image output

Home entertainment, perfect enjoyment

- Extreme graphics, HD2.0 Image output
  - 1000M Ethernet LAN
-



Unforgettable visual  
experience.

1920 \* 1080 HD



Support 3D



1080P



Ultra Wide Vision

It's all about speeding up.



1G DDR3 dual channel memory and 8GB eMMC high speed flash memory.

The dual channel memory runs 1080p HD videos and large games flawlessly,  
while the eMMC high speed flash memory controls apps, games, and multi-media storage with ease.

Everything comes alive with 3D.



Experience home entertainment in 3D!



## S905

One of industry's first multimedia SoCs with 64-bit architecture, S905 is designed to deliver immersive theatre-level home entertainment to the users with excellent audio and video processing capabilities. It also supports operator-level security and is a perfect choice for OTT/IPTV/DVB STB, TV dongle and smart home applications.