

Amlogic S905 Quad Core Android 5.1 Lollipop 1G 8G 4K 2K UHD Output Media Player S9

Hardware Specifications	
Model No.	S9
CPU	Amlogic S905 Quad Core ARM Cortex™-A53 CPU up to 2.0 GHz (DVFS)
GPU	Penta-Core Mali-450 Up to 750Mhz+
FLASH	8GB
DDR3	1GB DDR3
Moudle	Aluminium: Black Color
Power www.sztomato.com	
Power Supply	DC 5V/2A
Power Indicator (LED)	LED indicator, working: Blue, Standby: Red Standby Power: <0.5W
Software	
OS	Android™ 5.1 Lollipop
Video	H.265 HEVC MP-10@L5.1 up to 4Kx2K@60fps
	H.264 AVC HP™ @L5.1 up to 4Kx2K@30fps
	H.264 MVC up to 1080P@60fps
	MPEG-4 ASP@L5 up to 1080P@60fps (ISO-14496)
	WMV/VC-1 SP/MP/AP up to 1080P@60fps
	AVS-P16(AVS+) /AVS-P2 Profile up to 1080P@60fps
	MPEG-2 MP/HL up to 1080P@60fps (ISO-13818)
	MPEG-1 MP/HL up to 1080P@60fps (ISO-11172)
	RealVideo 8/9/10 up to 1080P
	WebM up to VGA
	Multiple Language and Multiple Format Sub-title Video Support
	MJPEG and JPEG Unlimited Pixel Resolution Decoding(ISO/IEC-10918)
	Supports JPEG Thumbnail, Scaling, Rotation and Transition effects
Supports *.mkv,*.wmv,*.mpg, *.mpeg, *.dat, *.avi, *.mov, *.iso, *.mp4, *.rm and *.jpg file Formats	
Audio	Low Power MediaCPU with DSP Audio Processing
	Supports MP3, AAC, WMA, RM, FLAC, Ogg and Programmable with 5.1 down-mixing
	Built-in SPDIF/IEC958 and PCM Serial Digital Audio input/output
Image	HD JPEG, BMP, GIF, PNG, TIF
Support language	Chinese, English, Germany, Japanese, Korea etc. Multi languages
I/O www.sztomato.com	
1*HDMI™	4K*2K UHD Output, HDMI™ 2.0
1*AV OUT	480i/576i Standard Definition output
3*USB	2*USBHost Port , 1*USB Device

1*OPTICAL	Digital Audio output
1*RJ45	Ethernet Interface, 1000M LAN
1*SD™/MMC CARD	Support 4GB/8GB/16GB/32GB/64GB
Appliactions	
Online	Browse all video websites, support Netflix, Hulu, Flixster, Youtube, etc.
Apps	Apps download freely form android market, amazon™ app store etc.
Medium	Local Media playback, Support HDD, U Disck, SD™/MMC Card.
Talk Online	Support SKYPE video call, MSN, facebook, twitter, QQ etc.
Others	Support Email, Office Suit etc. Support DLNA Function Support 2.4G Wireless Mouse/Keyboard

What's in the box ?

1*Amlogic S905 Quad Core

1*HDMI Cable

1*Remote Control

1*Power Adapter

1*User Manual



Picture Show



Indicator



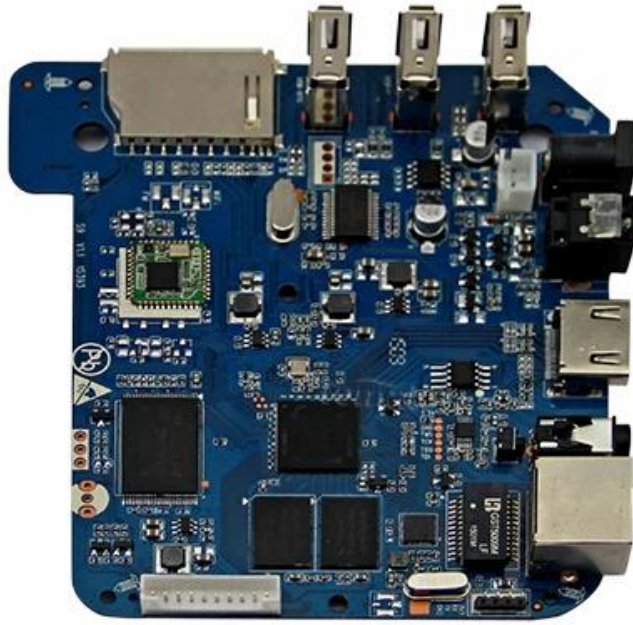
USB*3

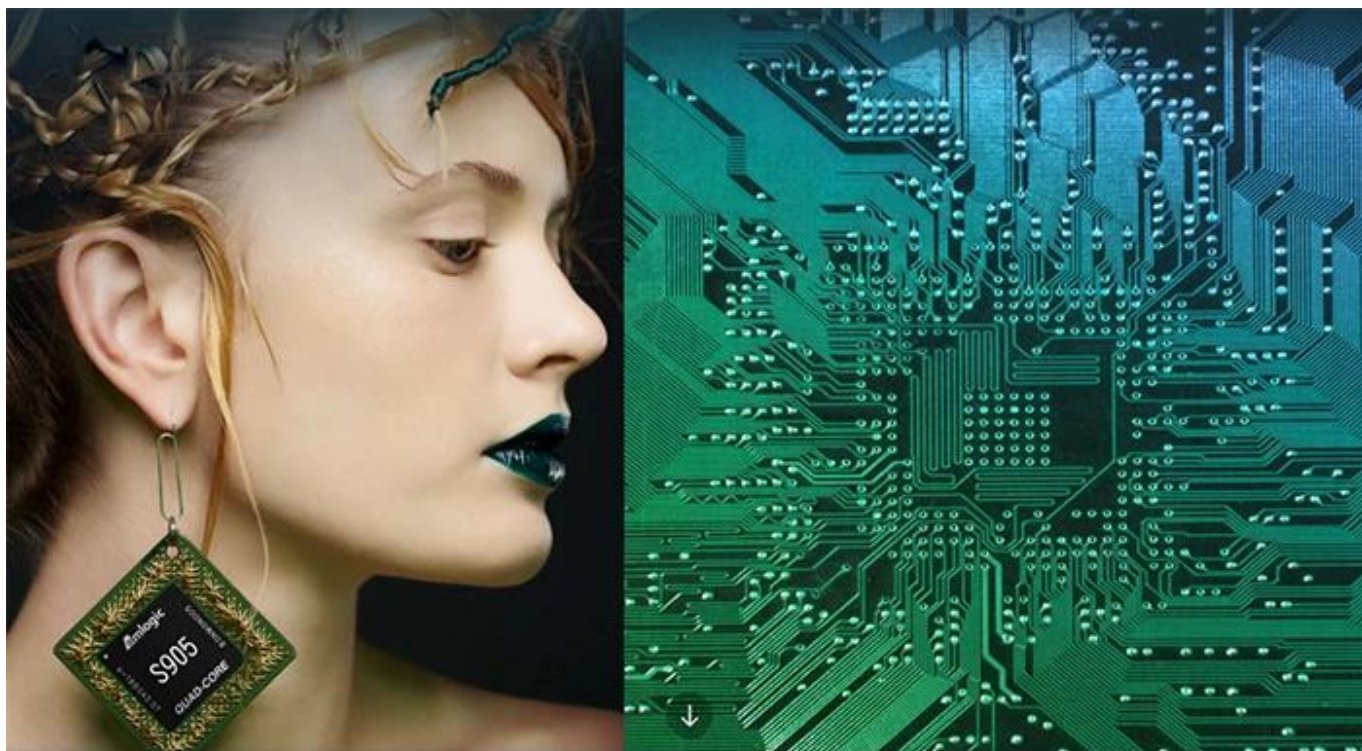
SD/MMC Card



ON/OFF Button DC Port RJ45 ETHERENT AV Port HDMI™ OPTICAL Port







S905

64-Bit
Quad Core
Cortex A53

4K

H.265
@60fps

HDMI 2.0
HDCP 2.2

TSMC
28NM

DRM



64 bit CPU,

While maintaining the same power consumption, the computing power of CPU has also been greatly improved.

With 4K2K decoding capabilities,
it make 4K become the standard.



The color quantity is increase by 60 times more than the previous generation.



10 bit decoding, it could highest support 1.07 billion color,
Compared to the previous generation of 16.7 million colors, it increase by 60 times.

The sound upgrade,
while supporting Dolby Digital Plus and DTS.



3 + 2 core high-frequency GPU,
it make the TV turn into the PlayStation.



The single core CPU frequency increase of 25%, 5-core computing speed can be achieved by the previous generation 8-core, it allowing you to experience smooth gaming.

Support 802.11ac WiFi protocol.

200 Mbps
实际速率

120 Mbps
上一代实际速率



Wireless projection the image&video
of the phone/computer onto the TV.



Miracast



Airplay



DLNA



SMB
共享协议



Intel@WIDI

Equipped with smart contiguous
memory allocation technology,
make the system running more smoothly.



4.1



Bluetooth[®]



HD2.0
Image output



HD1.0
Image output

Home entertainment, perfect enjoyment

- Extreme graphics, HD2.0 Image output
 - 1000M Ethernet LAN
-



Unforgettable visual
experience.

1920 * 1080 HD



Support 3D



1080P



Ultra Wide Vision

It's all about speeding up.



1G DDR3 dual channel memory and 8GB eMMC high speed flash memory.

The dual channel memory runs 1080p HD videos and large games flawlessly,
while the eMMC high speed flash memory controls apps, games, and multi-media storage with ease.

Everything comes alive with 3D.



Experience home entertainment in 3D!



S905

One of industry's first multimedia SoCs with 64-bit architecture, S905 is designed to deliver immersive theatre-level home entertainment to the users with excellent audio and video processing capabilities. It also supports operator-level security and is a perfect choice for OTT/IPTV/DVB STB, TV dongle and smart home applications.