

Android 4K Set Top Box(STB) And Linux 4K STB

Specifications

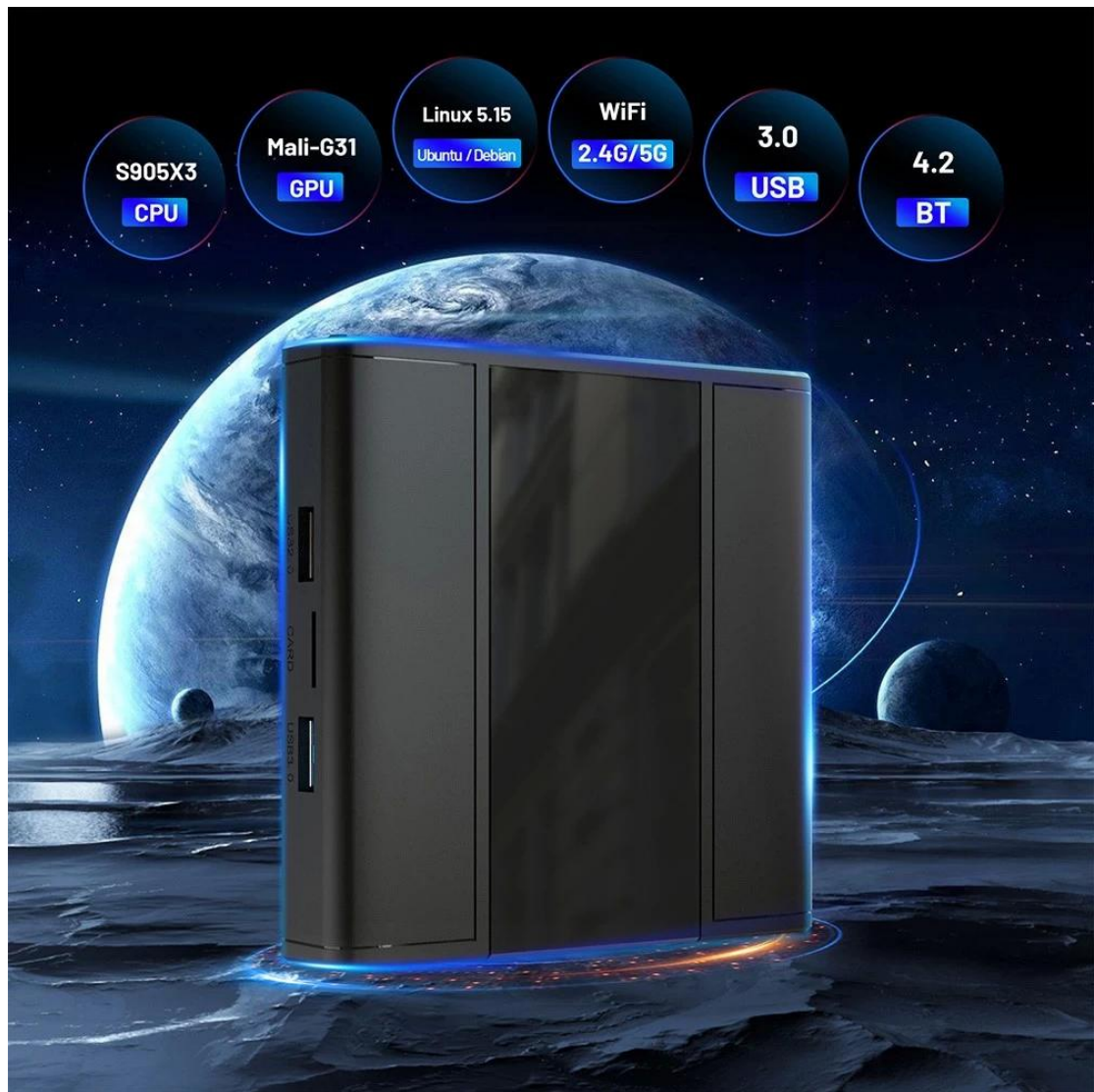
Model No.	Android 4K Set Top Box(STB) And Linux 4K STB
CPU	Amlogic S905X3 64-bit Quad Core ARM® Cortex™ A55 CPU
GPU	G31™ MP2 GPU processor
RAM	DDR3: 2GB/4GB
ROM	eMMC: 32GB(Optional: 16GB/64GB)
OS	Ubuntu20.04(Linux5.15)
WiFi	IEEE 802.11 a/b/g/n/ac; 2.4G / 5G
Bluetooth	BT4.2
Desktop	lubuntu /xubuntu / lxde / xfce4
Apps & Services	You can install applications or services by apt or dpkg.
Default Language	English

I/O Port

HDMI	1*HDMI 2.1
USB	1* USB 3.0 2* USB 2.0
AV Out	only Android
IR Reciver	Remote Reciver Connect [Optional]
RTC	[Optional]
LED Display	Time & Icons
RJ45	Ethernet Interface; Support 10/100/1000M
TF card slot	Support 4GB/8GB/16GB/32GB/64GB

Power

Power Supply	DC 5V/2A
--------------	----------



Amlogic S905X3 Advanced application processor
designed for high end media player



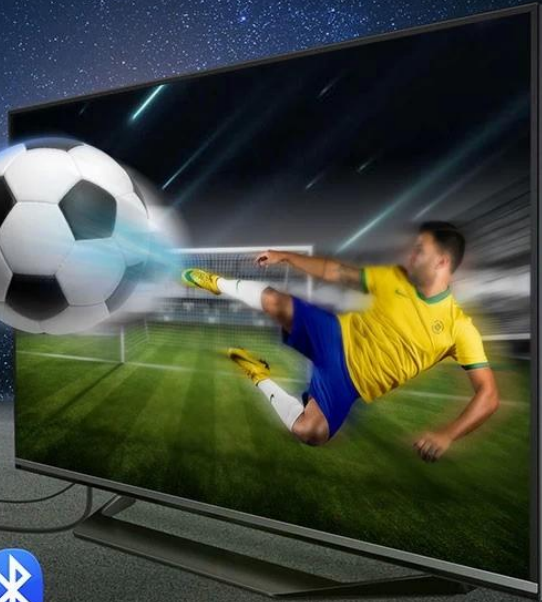
Equipped with dual band 2.4G&5G&802.11 a/b/g/n/ac and Bluetooth 4.2, the transmission speed is much faster!



2.4G&5G
802.11 a/b/g/n/ac



4.2



Multiple USB interfaces available to connect multiple devices.
Super Speed USB3.0 interface speed up to 5Gbps

USB
2.0

30MB/S

USB
3.0

320MB/S



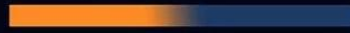
Dual Band Wireless

Run Box without Buffering Strong Signal



2.4G 5G

2.4GHz



5GHz



The Linux system with powerful network function to support different Ethernet protocols, an open source system composed of many micro core

Linux

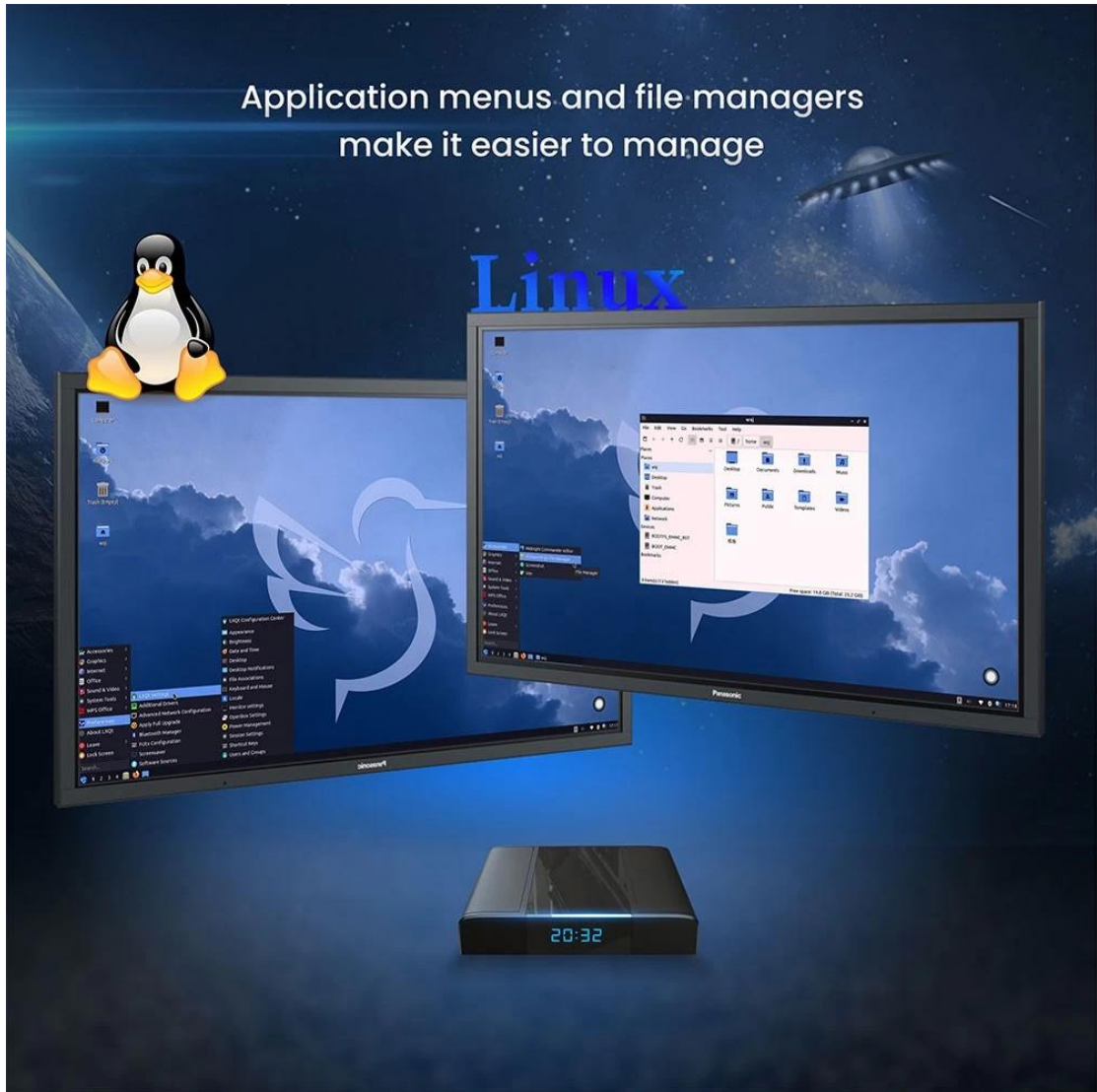


The Linux system is pre-installed with applications such as browsers, screenshot software, etc., providing convenient Internet experience, and retaining every wonderful moment

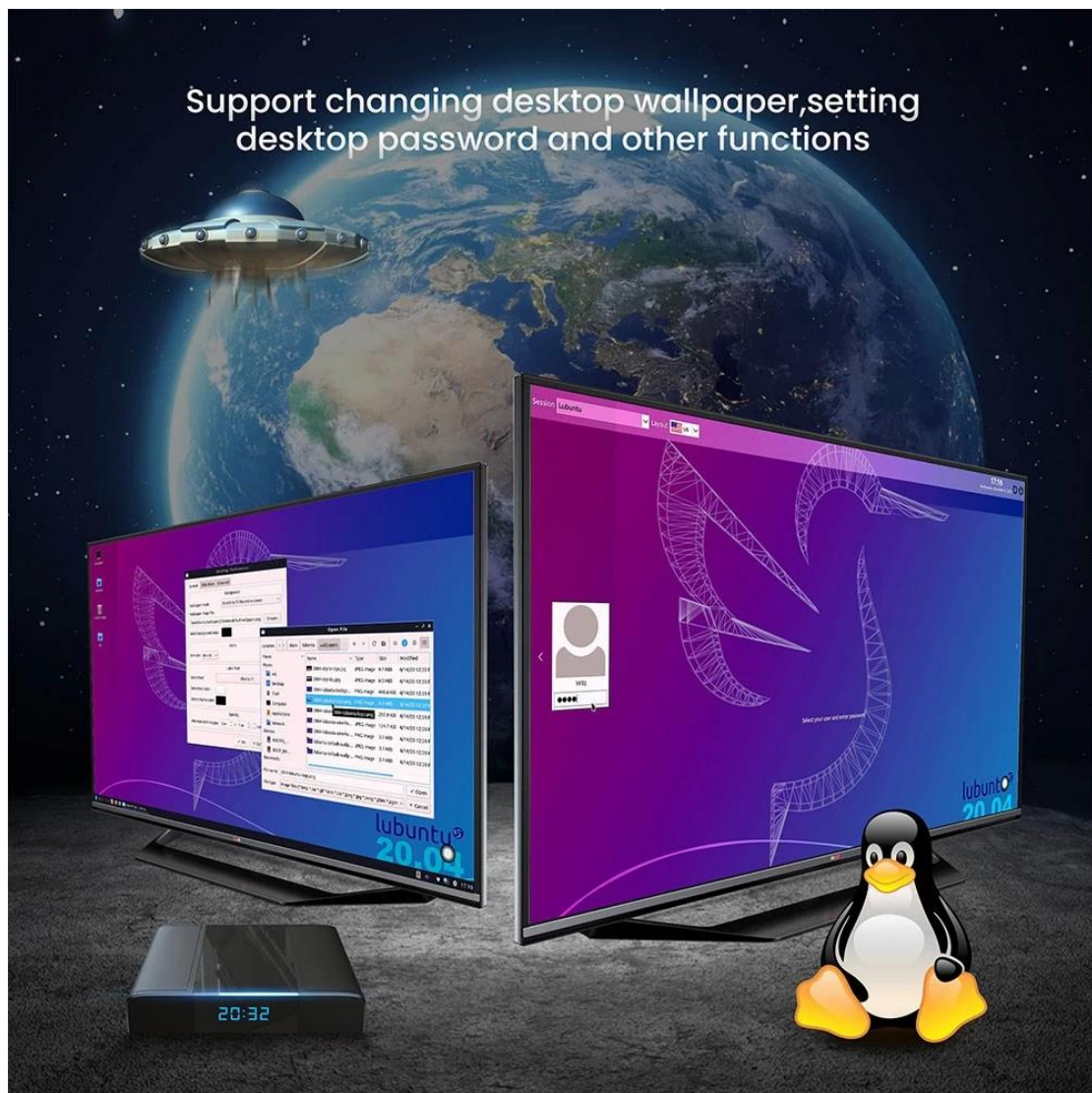


Application menus and file managers
make it easier to manage

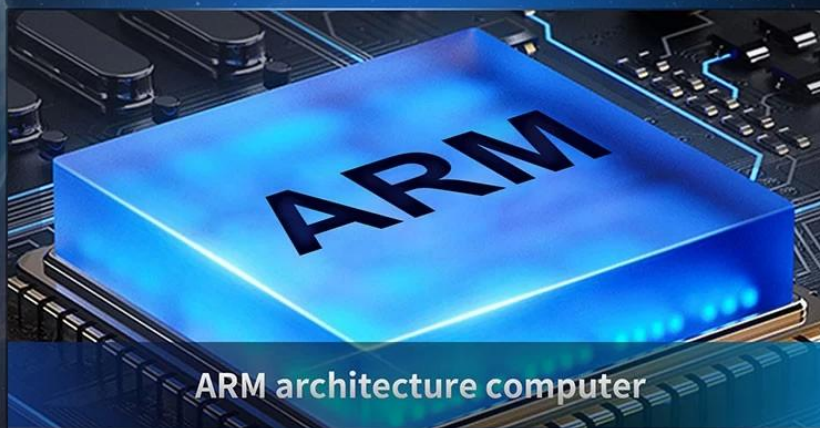
Linux



Support changing desktop wallpaper, setting
desktop password and other functions



What can do?





Package Contents



Power Adapter*1



HDMI Cable*1

The Linux Set Top Box is a cutting-edge multimedia device that combines the power of Linux operating system with the versatility of a set-top box. With its sleek design and advanced features, it offers a seamless entertainment experience for users.

At the heart of the Linux Set Top Box is the Linux operating system, which provides a stable and secure platform for running various applications and services. This allows users to enjoy a wide range of multimedia content, including streaming videos, music, and games, all in high definition.

The Linux Set Top Box comes equipped with a powerful processor and ample storage space, ensuring smooth and lag-free performance. It supports various connectivity options, including HDMI, USB, and Ethernet, allowing users to connect to their favorite devices and networks effortlessly.

One of the standout features of the Linux Set Top Box is its user-friendly interface. The intuitive interface makes it easy for users to navigate through the various applications and services, ensuring a hassle-free experience. Additionally,

the device supports voice control, allowing users to control their entertainment experience with simple voice commands.

The Linux Set Top Box also offers a wide range of applications and services, catering to the diverse needs of users. From popular streaming services like Netflix and Amazon Prime Video to social media platforms like Facebook and Instagram, users can access their favorite content with just a few clicks. The device also supports popular gaming platforms, allowing users to enjoy their favorite games on the big screen.

In terms of audio and video quality, the Linux Set Top Box delivers exceptional performance. With support for high-definition video playback and surround sound, users can enjoy a truly immersive entertainment experience. The device also supports 4K resolution, ensuring crystal-clear visuals for a truly cinematic experience.

Furthermore, the Linux Set Top Box offers advanced features like screen mirroring, allowing users to mirror their smartphone or tablet screens onto the TV. This enables users to share photos, videos, and presentations with friends and family on the big screen.

In conclusion, the Linux Set Top Box is a state-of-the-art multimedia device that offers a seamless entertainment experience. With its powerful hardware, user-friendly interface, and extensive range of applications and services, it is the perfect companion for anyone looking to enhance their entertainment setup. Whether you're streaming your favorite movies, playing games, or sharing content with loved ones, the Linux [Set Top Box](#) delivers exceptional performance and versatility.

Discover the Ultimate Entertainment Experience with Our Android 4K Set Top Box(STB) And Linux 4K STB:

1. **Stunning 4K Resolution:** Enjoy immersive viewing experiences with crystal-clear 4K resolution, delivering vibrant colors and lifelike detail.
2. **Android and Linux Compatibility:** Choose between Android and Linux operating systems to suit your preferences and requirements for a versatile entertainment experience.
3. **Seamless Streaming:** Access a world of entertainment with seamless streaming capabilities, allowing you to enjoy your favorite movies, TV shows, and music on-demand.

4. **Powerful Performance:** Benefit from high-performance hardware and advanced processors, ensuring smooth multitasking, gaming, and multimedia playback.
5. **Enhanced Connectivity:** Connect effortlessly to your home network with built-in Wi-Fi, Ethernet, Bluetooth, and USB ports, ensuring reliable connectivity for all your devices.
6. **User-friendly Interface:** Navigate through your favorite apps, games, and content with ease using our intuitive user interface, designed for simplicity and convenience.
7. **Expandable Storage:** Store your favorite media files, games, and apps with expandable storage options, allowing you to customize your entertainment library to suit your needs.

Transform your TV into a multimedia powerhouse with our Android 4K Set Top Box(STB) And Linux 4K STB, offering unmatched versatility, performance, and entertainment options.