

Android 5.1 Amlogic S905 Quad Core Full HD Media Player 1080P Android TV Box Quad Core Box G9C

Amlogic S905 Quad Core WiFi Device Smart Box
Watch TV Channels Through Wifi or Internet



Hardware Specifications	
Model No.	G9C Full HD Media Player
CPU	Amlogic S905 Quad Core ARM Cortex™-A53 CPU up to 2.0 GHz (DVFS)
GPU	Penta-Core Mali-450 Up to 750Mhz+
FLASH	8GB EMMC
SDRAM	1GB DDR3
Power Supply Specifications	
Power Supply	DC 5V/2A
Power Indicator (LED)	Power ON:blue; Standby:Red
Main Features	
OS	Android™ 5.1 Lollipop
3D	3D-HD 1080Px2
Support Decoder Format	HD MPEG1/2/4,H.264/H.265, HD AVC/VC-1,RM/RMVB,Xvid/DivX3/4/5/6 , RealVideo8/9/10,HEVC MP-10
Support Media Format	Avi/Rm/Rmvp/Ts/Vob/Mkv/Mov/ISO/Wmv/Asf/Flv/Dat/Mpg/Mpeg/MP4
Support Music Format	MP3/WMA/AAC/WAV/OGG/AC3/DDP/TrueHD/DTS/DTS/HD/FLAC/APE
Support Photo Format	HD JPEG/BMP/GIF/PNG/TIFF
USB Host	2 High Speed USB 2.0,Support U DISK And USB HDD
Card Reader	SD™ /SDHC/MMC Cards
HDD File System	FAT16/FAT32/NTFS
Support Subtitle	SRT/SMI/SUB/SSA/IDX+USB
High Definition Video Output	Support All Standard SD/HD/4K2K Ultra HD Decoding And Output
OSD type of languages	English/French/German/Spanish/Italian etc Multilateral Languages
LAN	Ethernet:1000M, Standard RJ-45 (optional IEEE 802.3 10/100/1000 Gigabit)
Wireless	Support IEEE802.11 b/g/n Bluetooth™ 4.1EDR
Mouse/Keyboard	Support Mouse And Keyboard Via USB;Support 2.4GHz Wireless Mouse And Keyboard Via 2.4GHz USB Dongle
HDMI™	HDMI™ 2.0 (CEC and HDCP 2.2), 4K X 2K @60 fps
AV	Support
Optical	Support

PoE(Power Over Ethernet)	Support
SPDIF/IEC958	Optical
IPTV And OTT	Support Many Kinds of IPTV And OTT Programmes
Software Specifications	
Network Function	Miracast, Kodi, Airplay, Skype Chatting, Picasa, Youtube, Flicker, Facebook, Online Movies, etc
Other Feature	Free Internet Searching,Thousands of Android Applications,Many Kinds of Games,etc

What's in the box?

- 1 * Full HD Media Player
- 1 * HDMI Cable
- 1 * Remote Control
- 1 * Power Adapter
- 1 * User Manual



Picture Show



Indicator Light Port





Micro SD Card

USB

USB



AV Port

RJ 45 ETHERNET

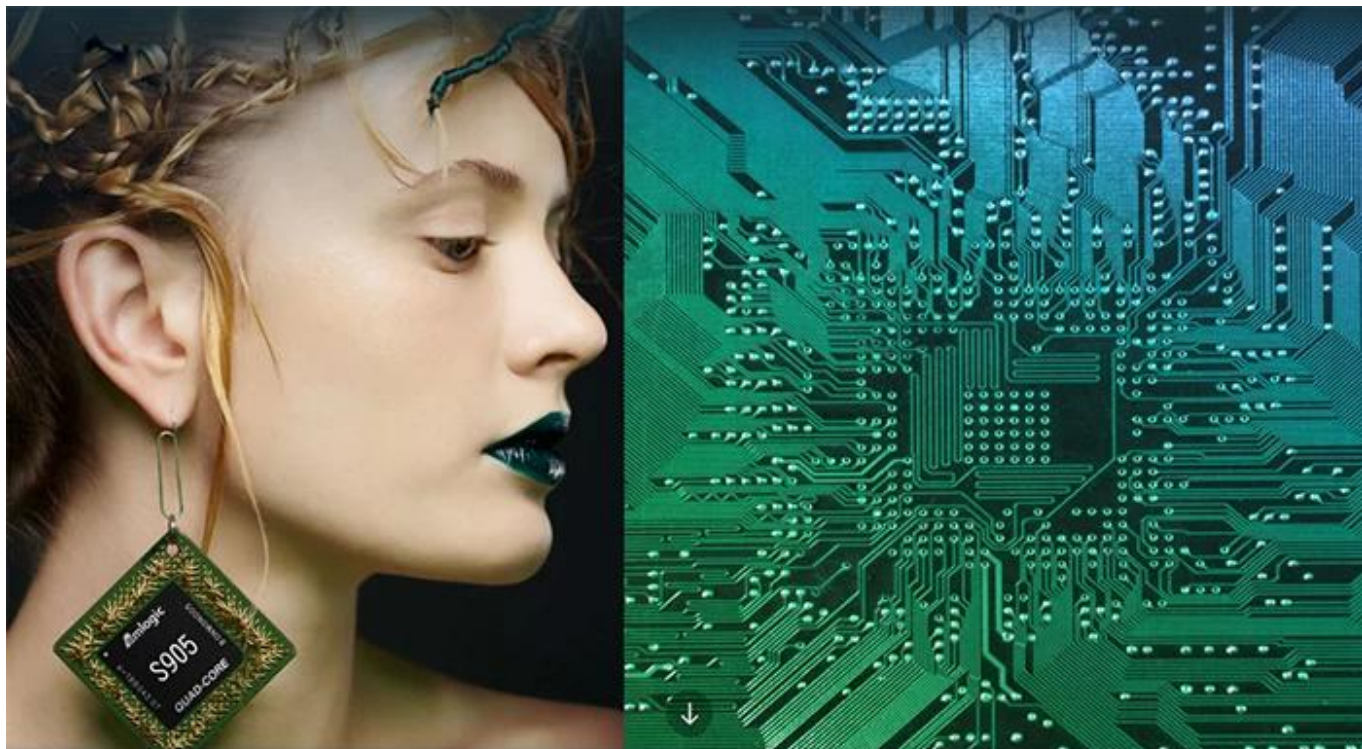
HDMI™

Optical Port

Power Port







S905

64-Bit
Quad Core
Cortex A53

4K

H.265
@60fps

HDMI 2.0
HDCP 2.2

TSMC
28NM

DRM



64 bit CPU,

While maintaining the same power consumption, the computing power of CPU has also been greatly improved.

With 4K2K decoding capabilities,
it make 4K become the standard.



The color quantity is increase by 60 times more than the previous generation.



10 bit decoding, it could highest support 1.07 billion color,
Compared to the previous generation of 16.7 million colors, it increase by 60 times.

The sound upgrade,
while supporting Dolby Digital Plus and DTS.



3 + 2 core high-frequency GPU,
it make the TV turn into the PlayStation.



The single core CPU frequency increase of 25%, 5-core computing speed can be achieved by the previous generation 8-core, it allowing you to experience smooth gaming.

Support 802.11ac WiFi protocol.

200 Mbps
实际速率

120 Mbps
上一代实际速率



Wireless projection the image&video
of the phone/computer onto the TV.



Miracast



Airplay



DLNA



SMB
共享协议



Intel@WIDI

Equipped with smart contiguous
memory allocation technology,
make the system running more smoothly.





Unforgettable visual
experience.

1920 * 1080 HD



Support 3D



1080P



Ultra Wide Vision

It's all about speeding up.



1GB
DDR3
dual channel memory



8GB
eMMC
flash memory

1G DDR3 dual channel memory and 8GB eMMC high speed flash memory.

The dual channel memory runs 1080p HD videos and large games flawlessly,
while the eMMC high speed flash memory controls apps, games, and multi-media storage with ease.

Everything comes alive with 3D.



Experience home entertainment in 3D!



S905

One of industry's first multimedia SoCs with 64-bit architecture, S905 is designed to deliver immersive theatre-level home entertainment to the users with excellent audio and video processing capabilities. It also supports operator-level security and is a perfect choice for OTT/IPTV/DVB STB, TV dongle and smart home applications.